

Anti-alpha Internexin antibody [EP676Y] ab40758

敲除验证
重组
RabMAb

★★★★☆
7 Abreviews
8 References
6 图像

概述

产品名称	Anti-alpha Internexin抗体[EP676Y]
描述	兔单克隆抗体[EP676Y] to alpha Internexin
宿主	Rabbit
经测试应用	适用于: WB, IP, IHC-FoFr, Flow Cyt, IHC-P, ICC/IF
种属反应性	与反应: Mouse, Rat, Human 不与反应: Apterionotus leptorhynchus
免疫原	Synthetic peptide within Human alpha Internexin aa 400-500. The exact sequence is proprietary.
阳性对照	HeLa, SHSY5Y cell lysate, human brain lysate.
常规说明	This product is a recombinant monoclonal antibody, which offers several advantages including: - High batch-to-batch consistency and reproducibility - Improved sensitivity and specificity - Long-term security of supply - Animal-free production For more information see here . Our RabMAb [®] technology is a patented hybridoma-based technology for making rabbit monoclonal antibodies. For details on our patents, please refer to RabMAb[®] patents .

性能

形式	Liquid
存放说明	Shipped at 4°C. Upon delivery aliquot and store at -20°C. Avoid freeze / thaw cycles.
存储溶液	pH: 7.20 Preservative: 0.01% Sodium azide Constituents: 9% PBS, 40% Glycerol (glycerin, glycerine), 0.05% BSA, 50% Tissue culture supernatant
纯度	Protein A purified
克隆	单克隆
克隆编号	EP676Y
同种型	IgG

应用

The Abpromise guarantee

Abpromise™ 承诺保证使用ab40758于以下的经测试应用

“应用说明”部分 下显示的仅为推荐的起始稀释度;实际最佳的稀释度/浓度应由使用者检定。

应用	Ab评论	说明
WB	★★★★★ (2)	1/5000 - 1/10000. Detects a band of approximately 60 kDa (predicted molecular weight: 66 kDa).
IP		Use at an assay dependent concentration.
IHC-FoFr	★★★★★ (1)	Use at an assay dependent concentration.
Flow Cyt		Use at an assay dependent concentration. ab172730 - Rabbit monoclonal IgG, is suitable for use as an isotype control with this antibody.
IHC-P	★★★★★ (1)	1/250 - 1/500. Perform heat mediated antigen retrieval with citrate buffer pH 6 before commencing with IHC staining protocol.
ICC/IF	★★★★★ (1)	1/250 - 1/500.

靶标

功能

Class-IV neuronal intermediate filament that is able to self-assemble. It is involved in the morphogenesis of neurons. It may form an independent structural network without the involvement of other neurofilaments or it may cooperate with NF-L to form the filamentous backbone to which NF-M and NF-H attach to form the cross-bridges.

组织特异性

Found predominantly in adult CNS.

序列相似性

Belongs to the intermediate filament family.

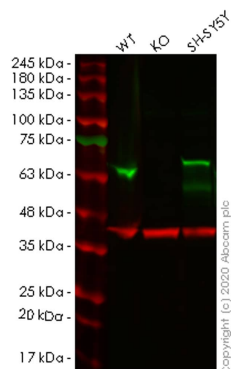
发展阶段

Expressed in brain as early as the 16th week of gestation, and increased rapidly and reached a steady state level by the 18th week of gestation.

翻译后修饰

O-glycosylated.
Phosphorylated upon DNA damage, probably by ATM or ATR.

图片



Western blot - Anti-alpha Internexin antibody
[EP676Y] (ab40758)

All lanes : Anti-alpha Internexin antibody [EP676Y] (ab40758) at 1/1000 dilution

Lane 1 : Wild-type HeLa cell lysate

Lane 2 : INA knockout HeLa cell lysate

Lane 3 : SH-SY5Y cell lysate

Lysates/proteins at 20 µg per lane.

Secondary

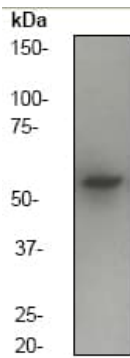
All lanes : Goat anti-Rabbit IgG H&L (IRDye® 800CW) preadsorbed ([ab216773](#)) at 1/10000 dilution

Predicted band size: 66 kDa

Observed band size: 66 kDa

Lanes 1-4: Merged signal (red and green). Green - ab40758 observed at 66 kDa. Red - loading control [ab8245](#) observed at 36 kDa.

ab40758 Anti-alpha Internexin antibody [EP676Y] was shown to specifically react with alpha Internexin in wild-type HeLa cells. Loss of signal was observed when knockout cell line [ab265264](#) (knockout cell lysate [ab257482](#)) was used. Wild-type and alpha Internexin knockout samples were subjected to SDS-PAGE. ab40758 and Anti-GAPDH antibody [6C5] - Loading Control ([ab8245](#)) were incubated overnight at 4°C at 1 in 1000 dilution and 1 in 20000 dilution respectively. Blots were developed with Goat anti-Rabbit IgG H&L (IRDye® 800CW) preadsorbed ([ab216773](#)) and Goat anti-Mouse IgG H&L (IRDye® 680RD) preadsorbed ([ab216776](#)) secondary antibodies at 1 in 20000 dilution for 1 hour at room temperature before imaging.

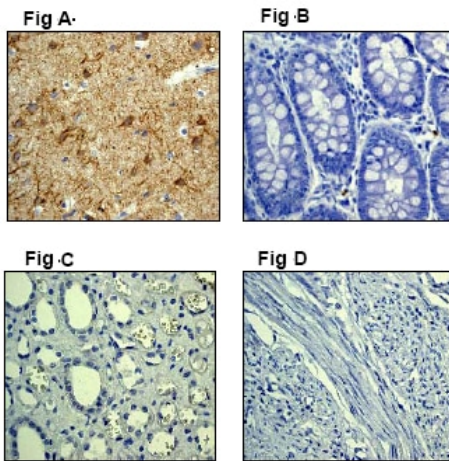


Western blot - Anti-alpha Internexin antibody
[EP676Y] (ab40758)

Anti-alpha Internexin antibody [EP676Y] (ab40758) at 1/10000
dilution + SHSY5Y cell lysate at 10 µg

Predicted band size: 66 kDa

Observed band size: 60 kDa

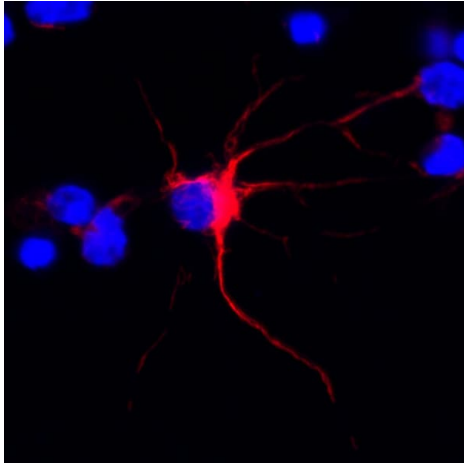


Immunohistochemistry (Formalin/PFA-fixed paraffin-
embedded sections) - Anti-alpha Internexin antibody
[EP676Y] (ab40758)

Positive staining of alpha Internexin on paraffin-embedded human
brain tissue (A) using ab40758 diluted 1:250. Negative staining of
paraffin-embedded human colon (B), Kidney (C) and uterus (D)
tissues using ab40758 under the same conditions.

Perform heat mediated antigen retrieval with citrate buffer pH 6
before commencing with IHC staining protocol.

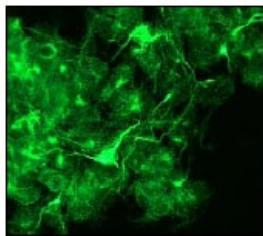
Perform heat mediated antigen retrieval with citrate buffer pH 6
before commencing with IHC staining protocol.



Immunocytochemistry/ Immunofluorescence - Anti-alpha Internexin antibody [EP676Y] (ab40758)

This image is courtesy of an anonymous Abreview

ab40758 staining alpha Internexin in rat glial cells by ICC/IF (Immunocytochemistry/immunofluorescence). Cells were fixed with paraformaldehyde, permeabilized with saponin and blocked with 1% BSA for 10 minutes at 25°C. Samples were incubated with primary antibody (1/200) for 10 hours at 4°C. An undiluted Alexa Fluor® 594-conjugated donkey anti-rabbit IgG polyclonal was used as the secondary antibody.



Immunocytochemistry/ Immunofluorescence - Anti-alpha Internexin antibody [EP676Y] (ab40758)

Immunofluorescent staining of alpha Internexin on PC 12 cells using ab40758 diluted 1:250.

Why choose a recombinant antibody?



Research with confidence
Consistent and reproducible results



Long-term and scalable supply
Recombinant technology



Success from the first experiment
Confirmed specificity



Ethical standards compliant
Animal-free production

Anti-alpha Internexin antibody [EP676Y] (ab40758)

Please note: All products are "FOR RESEARCH USE ONLY. NOT FOR USE IN DIAGNOSTIC PROCEDURES"

Our Abpromise to you: Quality guaranteed and expert technical support

- Replacement or refund for products not performing as stated on the datasheet

- Valid for 12 months from date of delivery
- Response to your inquiry within 24 hours
- We provide support in Chinese, English, French, German, Japanese and Spanish
- Extensive multi-media technical resources to help you
- We investigate all quality concerns to ensure our products perform to the highest standards

If the product does not perform as described on this datasheet, we will offer a refund or replacement. For full details of the Abpromise, please visit <https://www.abcam.cn/abpromise> or contact our technical team.

Terms and conditions

- Guarantee only valid for products bought direct from Abcam or one of our authorized distributors