




Anti-Alpha B Crystallin (phospho S45) antibody ab5598

2 References 1 图像

概述	
产品名称	Anti-Alpha B Crystallin (phospho S45)抗体
描述	兔多克隆抗体to Alpha B Crystallin (phospho S45)
宿主	Rabbit
经测试应用	适用于: WB
种属反应性	与反应: Recombinant fragment 预测可用于: Sheep, Rabbit, Hamster, Pig, Cynomolgus monkey 
免疫原	Synthetic peptide corresponding to Human Alpha B Crystallin aa 1-100 (phospho S45).  Run BLAST with  Run BLAST with
常规说明	<p>The Life Science industry has been in the grips of a reproducibility crisis for a number of years. Abcam is leading the way in addressing this with our range of recombinant monoclonal antibodies and knockout edited cell lines for gold-standard validation. Please check that this product meets your needs before purchasing.</p> <p>If you have any questions, special requirements or concerns, please send us an inquiry and/or contact our Support team ahead of purchase. Recommended alternatives for this product can be found below, along with publications, customer reviews and Q&As</p>
性能	
形式	Liquid
存放说明	Shipped at 4°C. Store at +4°C short term (1-2 weeks). Upon delivery aliquot. Store at -20°C or -80°C. Avoid freeze / thaw cycle.
存储溶液	Preservative: 0.05% Sodium azide Constituents: 96% PBS, 3% BSA
纯度	Immunogen affinity purified
克隆	多克隆
同种型	IgG
应用	

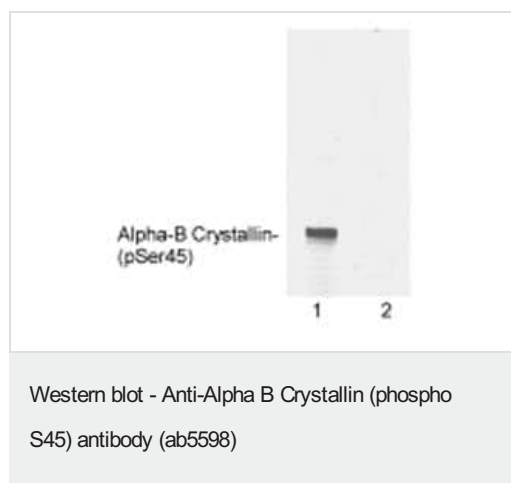
“应用说明”部分 下显示的仅为推荐的起始稀释度;实际最佳的稀释度/浓度应由使用者检定。

应用	Ab评论	说明
WB		Use a concentration of 0.5 µg/ml. Detects a band of approximately 20 kDa.

靶标

功能	May contribute to the transparency and refractive index of the lens.
组织特异性	Lens as well as other tissues.
疾病相关	Defects in CRYAB are the cause of myofibrillar alpha-B crystallin-related (MFM-CRYAB) [MIM:608810]. A neuromuscular disorder that results in weakness of the proximal and distal limb muscles, weakness of the neck, velopharynx and trunk muscles, hypertrophic cardiomyopathy, and cataract in a subset of patients.
序列相似性	Belongs to the small heat shock protein (HSP20) family.
细胞定位	Cytoplasm. Nucleus. Translocates to the nucleus during heat shock and resides in sub-nuclear structures known as SC35 speckles or nuclear splicing speckles.

图片



Western blot of recombinant bovine phospho-alpha-B crystallin (Ser45) using ab5598. Lane 1 is phospho-alpha-B crystallin (Ser45) and lane 2 is unphosphorylated alpha-B crystallin.

Please note: All products are "FOR RESEARCH USE ONLY. NOT FOR USE IN DIAGNOSTIC PROCEDURES"

Our Abpromise to you: Quality guaranteed and expert technical support

- Replacement or refund for products not performing as stated on the datasheet
- Valid for 12 months from date of delivery
- Response to your inquiry within 24 hours
- We provide support in Chinese, English, French, German, Japanese and Spanish
- Extensive multi-media technical resources to help you
- We investigate all quality concerns to ensure our products perform to the highest standards

If the product does not perform as described on this datasheet, we will offer a refund or replacement. For full details of the Abpromise, please visit <https://www.abcam.cn/abpromise> or contact our technical team.

Terms and conditions

- Guarantee only valid for products bought direct from Abcam or one of our authorized distributors