


# Anti-Alpha B Crystallin antibody ab65940

## 1 图像

### 概述

产品名称	Anti-Alpha B Crystallin抗体
描述	山羊多克隆抗体to Alpha B Crystallin
宿主	Goat
经测试应用	适用于: WB
种属反应性	与反应: Mouse, Rat 预测可用于: Sheep, Rabbit, Chicken, Guinea pig, Hamster, Cow, Pig, Cynomolgus monkey, Orangutan 
免疫原	Synthetic peptide: RLEKDRFSVNLD , from the internal region of human alpha B Crystallin <a href="#">Run BLAST with</a> <a href="#">Run BLAST with</a>

### 常规说明

The Life Science industry has been in the grips of a reproducibility crisis for a number of years. Abcam is leading the way in addressing this with our range of recombinant monoclonal antibodies and knockout edited cell lines for gold-standard validation. Please check that this product meets your needs before purchasing.

If you have any questions, special requirements or concerns, please send us an inquiry and/or contact our Support team ahead of purchase. Recommended alternatives for this product can be found below, along with publications, customer reviews and Q&As

### 性能

形式	Liquid
存放说明	Shipped at 4°C. Store at -20°C. Stable for 12 months at -20°C.
存储溶液	pH: 7.30 Preservative: 0.02% Sodium azide Constituents: Tris buffered saline, 0.5% BSA
纯度	Immunogen affinity purified
纯化说明	Purified from goat serum by ammonium sulphate precipitation followed by antigen affinity chromatography using the immunizing peptide.
克隆	多克隆
同种型	IgG

## 应用

### The Abpromise guarantee

**Abpromise™** 承诺保证使用 ab65940 于以下的经测试应用

“应用说明”部分 下显示的仅为推荐的起始稀释度;实际最佳的稀释度/浓度应由使用者检定。

应用	Ab评论	说明
<b>WB</b>		Use a concentration of 0.03 - 0.1 µg/ml. Detects a band of approximately 18-19 kDa (predicted molecular weight: 20 kDa). A 1 hour primary incubation is recommended for this product. Approx 22kDa band observed in Mouse and Rat Eye lysates (calculated MW of 20.1kDa according to Mouse NP_034094.1 and Rat NP_037067.1).

## 靶标

### 功能

May contribute to the transparency and refractive index of the lens.

### 组织特异性

Lens as well as other tissues.

### 疾病相关

Defects in CRYAB are the cause of myofibrillar alpha-B crystallin-related (MFM-CRYAB) [MIM:608810]. A neuromuscular disorder that results in weakness of the proximal and distal limb muscles, weakness of the neck, velopharynx and trunk muscles, hypertrophic cardiomyopathy, and cataract in a subset of patients.

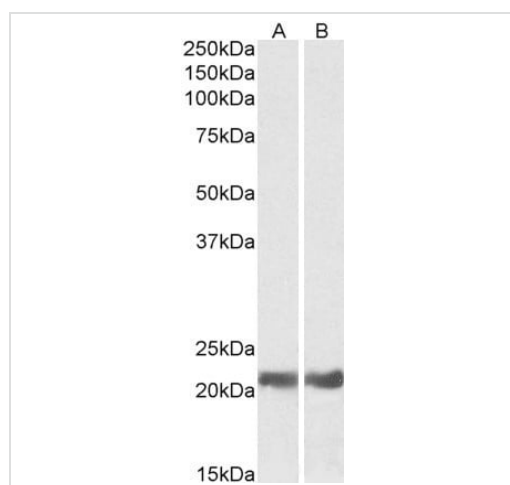
### 序列相似性

Belongs to the small heat shock protein (HSP20) family.

### 细胞定位

Cytoplasm. Nucleus. Translocates to the nucleus during heat shock and resides in sub-nuclear structures known as SC35 speckles or nuclear splicing speckles.

## 图片



Western blot - Anti-Alpha B Crystallin antibody (ab65940)

**All lanes** : Anti-Alpha B Crystallin antibody (ab65940) at 0.05 µg/ml

**Lane 1** : Mouse eye lysate

**Lane 2** : Rat eye lysate

Lysates/proteins at 35 µg per lane.

**Predicted band size:** 20 kDa

**Please note:** All products are "FOR RESEARCH USE ONLY. NOT FOR USE IN DIAGNOSTIC PROCEDURES"

### **Our Abpromise to you: Quality guaranteed and expert technical support**

---

- Replacement or refund for products not performing as stated on the datasheet
- Valid for 12 months from date of delivery
- Response to your inquiry within 24 hours
  
- We provide support in Chinese, English, French, German, Japanese and Spanish
- Extensive multi-media technical resources to help you
- We investigate all quality concerns to ensure our products perform to the highest standards

If the product does not perform as described on this datasheet, we will offer a refund or replacement. For full details of the Abpromise, please visit <https://www.abcam.cn/abpromise> or contact our technical team.

### **Terms and conditions**

---

- Guarantee only valid for products bought direct from Abcam or one of our authorized distributors