


Anti-alpha 1 Glycine Receptor/GLRA1 antibody ab228541

★☆☆☆☆ [1 Abreviews](#) [1 References](#) [3 图像](#)

概述

产品名称	Anti-alpha 1 Glycine Receptor/GLRA1抗体
描述	兔多克隆抗体to alpha 1 Glycine Receptor/GLRA1
宿主	Rabbit
经测试应用	适用于: WB, IHC-P, ICC/IF
种属反应性	与反应: Rat, Human 预测可用于: Mouse, Cow, Zebrafish, Rhesus monkey 
免疫原	Recombinant fragment within Human alpha 1 Glycine Receptor/GLRA1 (internal sequence). The exact sequence is proprietary. Database link: P23415
阳性对照	WB: HeLa S3 whole cell lysate. IHC-P: OVCA xenograft tissue. ICC/IF: DIV9 rat E18 primary cortical neuron cells.
常规说明	<p>The Life Science industry has been in the grips of a reproducibility crisis for a number of years. Abcam is leading the way in addressing this with our range of recombinant monoclonal antibodies and knockout edited cell lines for gold-standard validation. Please check that this product meets your needs before purchasing.</p> <p>If you have any questions, special requirements or concerns, please send us an inquiry and/or contact our Support team ahead of purchase. Recommended alternatives for this product can be found below, along with publications, customer reviews and Q&As</p>

性能

形式	Liquid
存放说明	Shipped at 4°C. Store at +4°C short term (1-2 weeks). Upon delivery aliquot. Store at -20°C long term. Avoid freeze / thaw cycle.
存储溶液	pH: 7.00 Preservative: 0.01% Thimerosal (merthiolate) Constituents: 1.21% Tris, 0.75% Glycine, 10% Glycerol (glycerin, glycerine)
纯度	Immunogen affinity purified
克隆	多克隆
同种型	IgG

应用

The Abpromise guarantee

Abpromise™承诺保证使用ab228541于以下的经测试应用

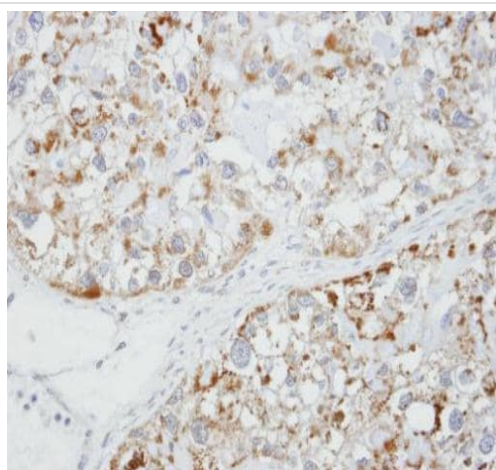
“应用说明”部分 下显示的仅为推荐的起始稀释度;实际最佳的稀释度/浓度应由使用者检定。

应用	Ab评论	说明
WB	★ ★ ★ ★ ★ (1)	1/500 - 1/3000. Predicted molecular weight: 53 kDa.
IHC-P		1/100 - 1/1000.
ICC/IF		1/100 - 1/1000.

靶标

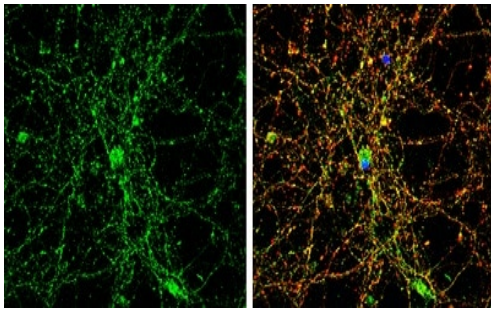
功能	The glycine receptor is a neurotransmitter-gated ion channel. Binding of glycine to its receptor increases the chloride conductance and thus produces hyperpolarization (inhibition of neuronal firing).
疾病相关	Defects in GLRA1 are a cause of startle disease (STHE) [MIM:149400]; also known as hereditary hyperekplexia or congenital stiff-person syndrome. STHE is a genetically heterogeneous neurologic disorder characterized by muscular rigidity of central nervous system origin, particularly in the neonatal period, and by an exaggerated startle response to unexpected acoustic or tactile stimuli. Inheritance can be autosomal dominant or recessive.
序列相似性	Belongs to the ligand-gated ion channel (TC 1.A.9) family. Glycine receptor (TC 1.A.9.3) subfamily. GLRA1 sub-subfamily.
细胞定位	Cell junction > synapse > postsynaptic cell membrane. Cell membrane.

图片



Paraffin-embedded OVCA (human) xenograft tissue stained for alpha 1 Glycine Receptor/GLRA1 using ab228541 at 1/100 dilution in immunohistochemical analysis.

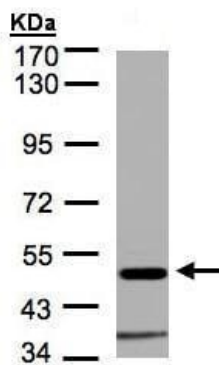
Immunohistochemistry (Formalin/PFA-fixed paraffin-embedded sections) - Anti-alpha 1 Glycine Receptor/GLRA1 antibody (ab228541)



Immunocytochemistry/ Immunofluorescence - Anti-alpha 1 Glycine Receptor/GLRA1 antibody (ab228541)

4% paraformaldehyde-fixed DIV9 rat E18 primary cortical neuron cells labeling alpha 1 Glycine Receptor/GLRA1 using ab228541 at 1/500 dilution.

The nuclear counterstain is DAPI (blue). beta Tubulin is labeled with an anti-beta Tubulin antibody (red).



Western blot - Anti-alpha 1 Glycine Receptor/GLRA1 antibody (ab228541)

Anti-alpha 1 Glycine Receptor/GLRA1 antibody (ab228541) at 1/1500 dilution + HeLa S3 whole cell lysate at 30 µg

Developed using the ECL technique.

Performed under reducing conditions.

Predicted band size: 53 kDa

7.5% SDS-PAGE

Please note: All products are "FOR RESEARCH USE ONLY. NOT FOR USE IN DIAGNOSTIC PROCEDURES"

Our Abpromise to you: Quality guaranteed and expert technical support

- Replacement or refund for products not performing as stated on the datasheet
- Valid for 12 months from date of delivery
- Response to your inquiry within 24 hours
- We provide support in Chinese, English, French, German, Japanese and Spanish
- Extensive multi-media technical resources to help you
- We investigate all quality concerns to ensure our products perform to the highest standards

If the product does not perform as described on this datasheet, we will offer a refund or replacement. For full details of the Abpromise, please visit <https://www.abcam.cn/abpromise> or contact our technical team.

Terms and conditions

- Guarantee only valid for products bought direct from Abcam or one of our authorized distributors