

Anti-alpha 1 Fetoprotein antibody [EPR9309] ab169552

重组 RabMAb

10 References [7 图像](#)

概述

产品名称	Anti-alpha 1 Fetoprotein抗体[EPR9309]
描述	兔单克隆抗体[EPR9309] to alpha 1 Fetoprotein
宿主	Rabbit
经测试应用	适用于: Flow Cyt (Intra), WB, IHC-P, ICC/IF, IP
种属反应性	与反应: Human
免疫原	Recombinant fragment within Human alpha 1 Fetoprotein. The exact sequence is proprietary.
阳性对照	Human plasma, HepG2 and Human fetal liver lysates, Human moderately differentiated hepatocellular carcinoma and Human poorly differentiated hepatocellular carcinoma tissues, HepG2 cells
常规说明	<p>This product is a recombinant monoclonal antibody, which offers several advantages including:</p> <ul style="list-style-type: none"> - High batch-to-batch consistency and reproducibility - Improved sensitivity and specificity - Long-term security of supply - Animal-free production <p>For more information see here.</p> <p>Our RabMAb[®] technology is a patented hybridoma-based technology for making rabbit monoclonal antibodies. For details on our patents, please refer to RabMAb[®] patents.</p> <p>Mouse, Rat: We have preliminary internal testing data to indicate this antibody may not react with these species. Please contact us for more information.</p>

性能

形式	Liquid
存放说明	Shipped at 4°C. Store at +4°C short term (1-2 weeks). Upon delivery aliquot. Store at -20°C long term.
存储溶液	<p>pH: 7.2</p> <p>Preservative: 0.01% Sodium azide</p> <p>Constituents: 59% PBS, 40% Glycerol (glycerin, glycerine), 0.5% BSA</p>
纯度	Protein A purified

克隆	单克隆
克隆编号	EPR9309
同种型	IgG

应用

The Abpromise guarantee

Abpromise™承诺保证使用ab169552于以下的经测试应用

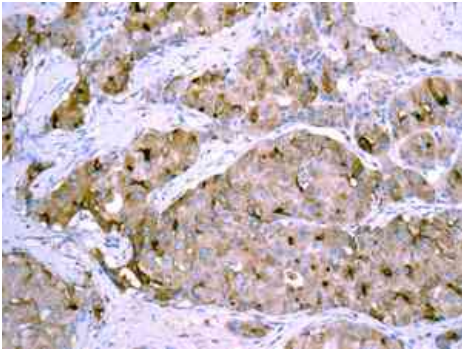
“应用说明”部分 下显示的仅为推荐的起始稀释度;实际最佳的稀释度/浓度应由使用者检定。

应用	Ab评论	说明
Flow Cyt (Intra)		1/50. ab172730 -Rabbit monoclonal IgG, is suitable for use as an isotype control with this antibody.
WB		1/1000 - 1/10000. Detects a band of approximately 70 kDa (predicted molecular weight: 68 kDa).
IHC-P		1/50 - 1/100. Perform heat mediated antigen retrieval with citrate buffer pH 6 before commencing with IHC staining protocol.
ICC/IF		1/100 - 1/250.
IP		1/10 - 1/100.

靶标

功能	Binds copper, nickel, and fatty acids as well as, and bilirubin less well than, serum albumin. Only a small percentage (less than 2%) of the human AFP shows estrogen-binding properties.
组织特异性	Plasma. Synthesized by the fetal liver and yolk sac.
序列相似性	Belongs to the ALB/AFP/VDB family. Contains 3 albumin domains.
发展阶段	Occurs in the plasma of fetuses more than 4 weeks old, reaches the highest levels during the 12th-16th week of gestation, and drops to trace amounts after birth. The serum level in adults is usually less than 40 ng/ml. AFP occurs also at high levels in the plasma and ascitic fluid of adults with hepatoma.
翻译后修饰	Independent studies suggest heterogeneity of the N-terminal sequence of the mature protein and of the cleavage site of the signal sequence. Sulfated.
细胞定位	Secreted.

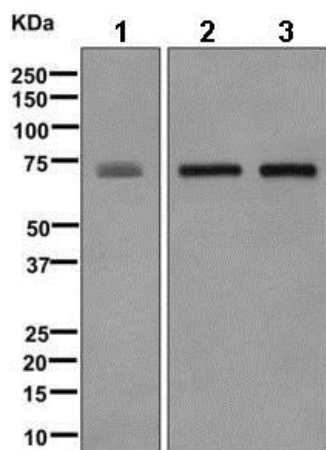
图片



Immunohistochemistry (Formalin/PFA-fixed paraffin-embedded sections) - Anti-alpha 1 Fetoprotein antibody [EPR9309] (ab169552)

Immunohistochemical analysis of paraffin embedded human moderately differentiated hepatocellular carcinoma tissue labeling alpha 1 Fetoprotein with ab169552 antibody at 1/50.

Perform heat mediated antigen retrieval with citrate buffer pH 6 before commencing with IHC staining protocol.



Western blot - Anti-alpha 1 Fetoprotein antibody [EPR9309] (ab169552)

All lanes : Anti-alpha 1 Fetoprotein antibody [EPR9309] (ab169552) at 1/1000 dilution

Lane 1 : Human plasma lysate

Lane 2 : HepG2 lysate

Lane 3 : Human fetal liver lysate

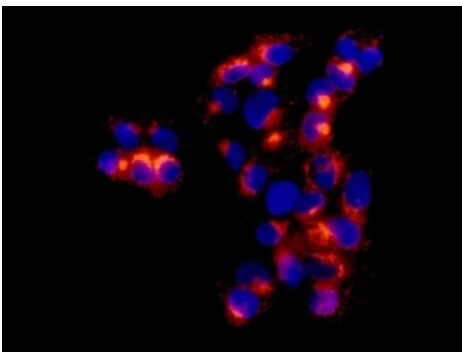
Lysates/proteins at 10 µg per lane.

Secondary

All lanes : HRP labelled goat anti-rabbit at 1/2000 dilution

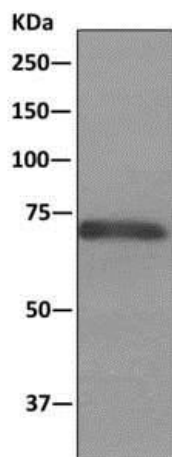
Predicted band size: 68 kDa

Observed band size: 70 kDa



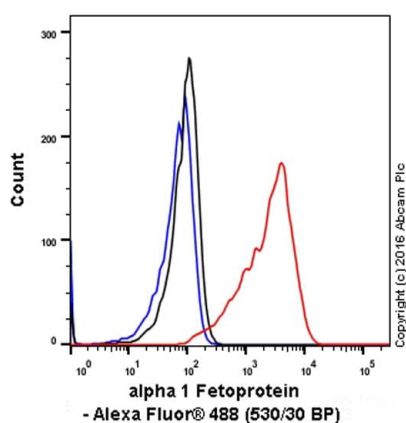
Immunocytochemistry/ Immunofluorescence - Anti-alpha 1 Fetoprotein antibody [EPR9309] (ab169552)

Immunofluorescent analysis of HepG2 cells labeling alpha 1 Fetoprotein with ab169552 at 1/100.



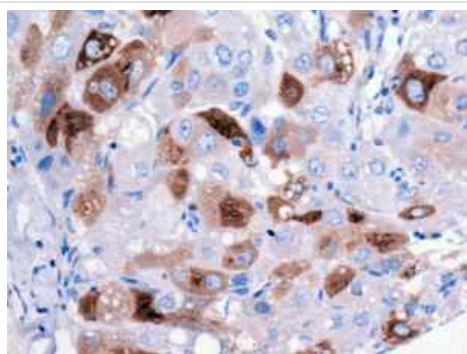
Immunoprecipitation - Anti-alpha 1 Fetoprotein antibody [EPR9309] (ab169552)

Immunoprecipitation. ab169552 at 1/1000 staining alpha 1 Fetoprotein in HepG2 cell lysate immunoprecipitated using ab169552 at 1/10. Predicted band size : 68 kDa.



Flow Cytometry (Intracellular) - Anti-alpha 1 Fetoprotein antibody [EPR9309] (ab169552)

Intracellular Flow Cytometry analysis of HepG2 (human hepatocellular carcinoma) cells labeling alpha 1 Fetoprotein with purified ab169552 at 1/50 dilution (red). The secondary antibody was Goat anti rabbit IgG (Alexa Fluor® 488) at 1/2000 dilution. A Rabbit monoclonal IgG (Black) was used as the isotype control and cells without incubation with primary antibody and secondary antibody (Blue) were used as unlabeled control.



Immunohistochemistry (Formalin/PFA-fixed paraffin-embedded sections) - Anti-alpha 1 Fetoprotein antibody [EPR9309] (ab169552)

Immunohistochemical analysis of paraffin embedded Human poorly differentiated hepatocellular carcinoma tissue labeling alpha 1 Fetoprotein with ab169552 antibody at 1/50. Perform heat mediated antigen retrieval with citrate buffer pH 6 before commencing with IHC staining protocol.

Why choose a recombinant antibody?



Research with confidence
Consistent and reproducible results



Long-term and scalable supply
Recombinant technology



Success from the first experiment
Confirmed specificity



Ethical standards compliant
Animal-free production

Anti-alpha 1 Fetoprotein antibody [EPR9309]
(ab169552)

Please note: All products are "FOR RESEARCH USE ONLY. NOT FOR USE IN DIAGNOSTIC PROCEDURES"

Our Abpromise to you: Quality guaranteed and expert technical support

- Replacement or refund for products not performing as stated on the datasheet
- Valid for 12 months from date of delivery
- Response to your inquiry within 24 hours
- We provide support in Chinese, English, French, German, Japanese and Spanish
- Extensive multi-media technical resources to help you
- We investigate all quality concerns to ensure our products perform to the highest standards

If the product does not perform as described on this datasheet, we will offer a refund or replacement. For full details of the Abpromise, please visit <https://www.abcam.cn/abpromise> or contact our technical team.

Terms and conditions

- Guarantee only valid for products bought direct from Abcam or one of our authorized distributors