

# Anti-Alkaline Phosphatase, Tissue Non-Specific antibody [2F4] ab126820

敲除 验证

[7 References](#) [7 图像](#)

### 概述

产品名称	Anti-Alkaline Phosphatase,组织Non-Specific抗体[2F4]
描述	小鼠单克隆抗体[2F4] to Alkaline Phosphatase,组织Non-Specific
宿主	Mouse
经测试应用	适用于: WB, ELISA, IHC-P, Flow Cyt, ICC/IF
种属反应性	与反应: Human
免疫原	Recombinant fragment corresponding to Human Alkaline Phosphatase, Tissue Non-Specific. expressed in E.coli Database link: <a href="#">P05186</a>
阳性对照	Recombinant Human ALPL protein (AA: 18-502), HeLa and NTERA-2 cell lysates. This antibody gave a positive result when used in the following formaldehyde/methanol fixed cell lines: HepG2
常规说明	<p>This product was changed from ascites to supernatant. Lot no's high than GR307490-5 are from Tissue Culture Supernatant</p> <p>The Life Science industry has been in the grips of a reproducibility crisis for a number of years. Abcam is leading the way in addressing this with our range of recombinant monoclonal antibodies and knockout edited cell lines for gold-standard validation. Please check that this product meets your needs before purchasing.</p> <p>If you have any questions, special requirements or concerns, please send us an inquiry and/or contact our Support team ahead of purchase. Recommended alternatives for this product can be found below, along with publications, customer reviews and Q&amp;As</p>

### 性能

形式	Liquid
存放说明	Shipped at 4°C. Store at -20°C.
存储溶液	Preservative: 0.05% Sodium azide Constituent: 99% PBS
纯度	Protein G purified
纯化说明	Purified from tissue culture supernatant.

克隆	单克隆
克隆编号	2F4
同种型	IgG1

应用

**The Abpromise guarantee**      **Abpromise™**承诺保证使用ab126820于以下的经测试应用

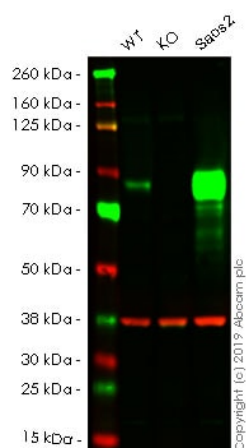
“应用说明”部分 下显示的仅为推荐的起始稀释度;实际最佳的稀释度/浓度应由使用者检定。

应用	Ab评论	说明
WB		1/500 - 1/2000. Detects a band of approximately 57.3, 78.9 kDa (predicted molecular weight: 57, 78.9 kDa).
ELISA		1/10000.
IHC-P		1/200 - 1/1000.
Flow Cyt		1/200 - 1/400. <b>ab170190</b> - Mouse monoclonal IgG1, is suitable for use as an isotype control with this antibody.
ICC/IF		1/100.

靶标

功能	This isozyme may play a role in skeletal mineralization.
疾病相关	Hypophosphatasia Hypophosphatasia childhood type Hypophosphatasia infantile type
序列相似性	Belongs to the alkaline phosphatase family.
翻译后修饰	N-glycosylated.
细胞定位	Cell membrane.

图片



Western blot - Anti-Alkaline Phosphatase, Tissue Non-Specific antibody [2F4] (ab126820)

**All lanes** : Anti-Alkaline Phosphatase, Tissue Non-Specific antibody [2F4] (ab126820) at 1/500 dilution

**Lane 1** : Wild-type HAP1 whole cell lysate

**Lane 2** : ALPL knockout HAP1 whole cell lysate

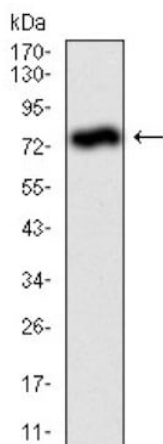
**Lane 3** : Saos2 whole cell lysate

Lysates/proteins at 20 µg per lane.

**Predicted band size:** 57, 78.9 kDa

**Lanes 1 - 3:** Merged signal (red and green). Green - ab126820 observed at 80 kDa. Red - loading control, **ab181602**, observed at 37 kDa.

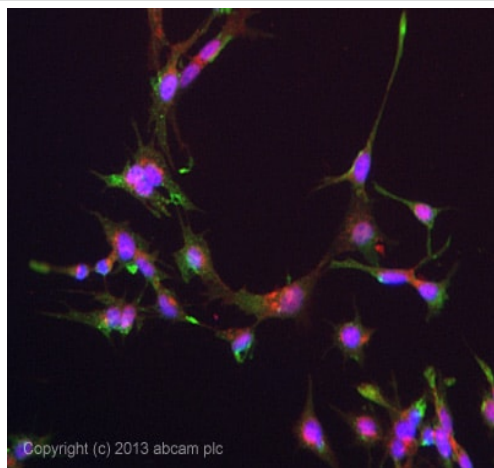
ab126820 was shown to specifically react with ALPL in wild-type HAP1 cells as signal was lost in ALPL knockout cells. Wild-type and ALPL knockout samples were subjected to SDS-PAGE. The membrane was blocked with 3% Milk. Ab126820 and **ab181602** (Rabbit anti-GAPDH loading control) were incubated overnight at 4°C at 1/500 dilution and 1/20000 dilution respectively. Blots were developed with Goat anti-Mouse IgG H&L (IRDye® 800CW) preabsorbed **ab216772** and Goat anti-Rabbit IgG H&L (IRDye® 680RD) preabsorbed **ab216777** secondary antibodies at 1/20000 dilution for 1 hour at room temperature before imaging.



Western blot - Anti-Alkaline Phosphatase, Tissue Non-Specific antibody [2F4] (ab126820)

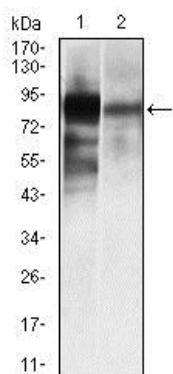
Anti-Alkaline Phosphatase, Tissue Non-Specific antibody [2F4] (ab126820) at 1/500 dilution + Recombinant Human protein ALPL (AA: 18-502)

**Predicted band size:** 57, 78.9 kDa



Immunocytochemistry/ Immunofluorescence - Anti-Alkaline Phosphatase, Tissue Non-Specific antibody [2F4] (ab126820)

ICC/IF image of ab126820 stained HepG2 cells. The cells were 4% formaldehyde fixed (10 min) and then incubated in 1%BSA / 10% normal goat serum / 0.3M glycine in 0.1% PBS-Tween for 1h to permeabilise the cells and block non-specific protein-protein interactions. The cells were then incubated with the antibody ab126820 at 1/100 dilution overnight at +4°C. The secondary antibody (green) was DyLight® 488 goat anti- mouse (**ab96879**) IgG (H+L) used at a 1/250 dilution for 1h. Alexa Fluor® 594 WGA was used to label plasma membranes (red) at a 1/200 dilution for 1h. DAPI was used to stain the cell nuclei (blue) at a concentration of 1.43µM. This antibody also gave a positive result in methanol fixed (100%, 5min) hepG2 cells used at 1/100 dilution.



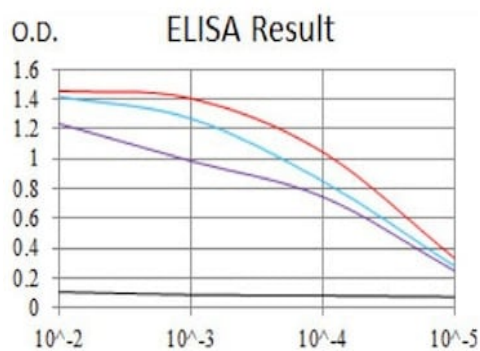
Western blot - Anti-Alkaline Phosphatase, Tissue Non-Specific antibody [2F4] (ab126820)

**All lanes :** Anti-Alkaline Phosphatase, Tissue Non-Specific antibody [2F4] (ab126820) at 1/500 dilution

**Lane 1 :** HeLa cell lysate

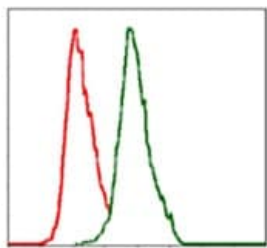
**Lane 2 :** NTERA-2 cell lysate

**Predicted band size:** 57, 78.9 kDa



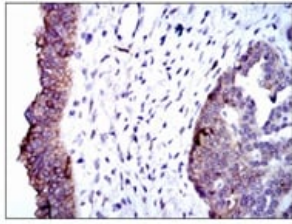
ELISA - Anti-Alkaline Phosphatase, Tissue Non-Specific antibody [2F4] (ab126820)

Example of standard curves obtained using ab126820. Control antigen 100ng (black), antigen at 10ng (purple), antigen at 50ng (blue), antigen at 100ng (red)



Flow Cytometry - Anti-Alkaline Phosphatase, Tissue Non-Specific antibody [2F4] (ab126820)

Flow cytometric analysis of MCF-7 cells using ab126820 at 1/200 (green) and negative control (red).



ab126820, at 1/200, staining Alkaline Phosphatase, Tissue Non-Specific in paraffin embedded Human ovarian cancer tissues by Immunohistochemistry with DAB staining.

Immunohistochemistry (Formalin/PFA-fixed paraffin-embedded sections) - Anti-Alkaline Phosphatase, Tissue Non-Specific antibody [2F4] (ab126820)

**Please note:** All products are "FOR RESEARCH USE ONLY. NOT FOR USE IN DIAGNOSTIC PROCEDURES"

### Our Abpromise to you: Quality guaranteed and expert technical support

---

- Replacement or refund for products not performing as stated on the datasheet
- Valid for 12 months from date of delivery
- Response to your inquiry within 24 hours
- We provide support in Chinese, English, French, German, Japanese and Spanish
- Extensive multi-media technical resources to help you
- We investigate all quality concerns to ensure our products perform to the highest standards

If the product does not perform as described on this datasheet, we will offer a refund or replacement. For full details of the Abpromise, please visit <https://www.abcam.cn/abpromise> or contact our technical team.

### Terms and conditions

---

- Guarantee only valid for products bought direct from Abcam or one of our authorized distributors