

Alexa Fluor® 700 Anti-CD41 antibody [MEM-06] ab270670

2 图像

概述

产品名称	Alexa Fluor® 700 Anti-CD41 抗体[MEM-06]
描述	Alexa Fluor® 700 小鼠单克隆抗体[MEM-06] to CD41
宿主	Mouse
偶联物	Alexa Fluor® 700
特异性	This antibody reacts with an extracellular epitope of CD41 (GPIIb), a transmembrane glycoprotein (integrin family) composed of two chains GPIIb alpha (heavy chain; 120 kDa) and GPIIb beta (light chain; 23 kDa). CD41 is mainly expressed on platelets and megakaryocytes.
经测试应用	适用于: Flow Cyt
种属反应性	与反应: Human
免疫原	Tissue, cells or virus corresponding to CD41. Leukocytes of patient suffering from LGL-type leukaemia.
阳性对照	Flow Cyt: Human peripheral whole blood.
常规说明	<p>Alexa Fluor® is a registered trademark of Molecular Probes, Inc, a Thermo Fisher Scientific Company. The Alexa Fluor® dye included in this product is provided under an intellectual property license from Life Technologies Corporation. As this product contains the Alexa Fluor® dye, the purchase of this product conveys to the buyer the non-transferable right to use the purchased product and components of the product only in research conducted by the buyer (whether the buyer is an academic or for-profit entity). As this product contains the Alexa Fluor® dye the sale of this product is expressly conditioned on the buyer not using the product or its components, or any materials made using the product or its components, in any activity to generate revenue, which may include, but is not limited to use of the product or its components: (i) in manufacturing; (ii) to provide a service, information, or data in return for payment (iii) for therapeutic, diagnostic or prophylactic purposes; or (iv) for resale, regardless of whether they are sold for use in research. For information on purchasing a license to this product for purposes other than research, contact Life Technologies Corporation, 5781 Van Allen Way, Carlsbad, CA 92008 USA or outlicensing@thermofisher.com.</p> <p>The Life Science industry has been in the grips of a reproducibility crisis for a number of years. Abcam is leading the way in addressing this with our range of recombinant monoclonal antibodies and knockout edited cell lines for gold-standard validation. Please check that this product meets your needs before purchasing.</p> <p>If you have any questions, special requirements or concerns, please send us an inquiry and/or contact our Support team ahead of purchase. Recommended alternatives for this product can be found below, along with publications, customer reviews and Q&As</p>

性能	
形式	Liquid
存放说明	Shipped at 4°C. Store at +4°C. Store In the Dark.
存储溶液	pH: 7.4 Preservative: 0.0975% Sodium azide Constituent: PBS
纯度	Size exclusion
克隆	单克隆
克隆编号	MEM-06
同种型	IgG1

应用

The Abpromise guarantee

Abpromise™承诺保证使用ab270670于以下的经测试应用

“应用说明”部分 下显示的仅为推荐的起始稀释度;实际最佳的稀释度/浓度应由使用者检定。

应用	Ab评论	说明
Flow Cyt		Use 4µl for 10 ⁶ cells. The reagent is designed for analysis of human blood cells using 4 µl reagent / 100 µl of whole blood or 10 ⁶ cells in a suspension.

靶标

功能	Integrin alpha-IIb/beta-3 is a receptor for fibronectin, fibrinogen, plasminogen, prothrombin, thrombospondin and vitronectin. It recognizes the sequence R-G-D in a wide array of ligands. It recognizes the sequence H-H-L-G-G-G-A-K-Q-A-G-D-V in fibrinogen gamma chain. Following activation integrin alpha-IIb/beta-3 brings about platelet/platelet interaction through binding of soluble fibrinogen. This step leads to rapid platelet aggregation which physically plugs ruptured endothelial cell surface.
组织特异性	Isoform 1 and isoform 2 were identified in platelets and megakaryocytes, but not in reticulocytes or in Jurkat and U937 white blood cell line. Isoform 3 is expressed by leukemia, prostate adenocarcinoma and melanoma cells but not by platelets or normal prostate or breast epithelial cells.
疾病相关	Defects in ITGA2B are a cause of Glanzmann thrombasthenia (GT) [MIM:273800]; also known as thrombasthenia of Glanzmann and Naegeli. GT is the most common inherited disease of platelets. It is an autosomal recessive disorder characterized by mucocutaneous bleeding of mild-to-moderate severity and the inability of this integrin to recognize macromolecular or synthetic peptide ligands. GT has been classified clinically into types I and II. In type I, platelets show absence of the glycoprotein IIb/beta-3 complexes at their surface and lack fibrinogen and clot retraction capability. In type II, the platelets express the glycoprotein IIb/beta-3 complex at reduced levels (5-20% controls), have detectable amounts of fibrinogen, and have low or moderate clot

retraction capability. The platelets of GT 'variants' have normal or near normal (60-100%) expression of dysfunctional receptors.

序列相似性

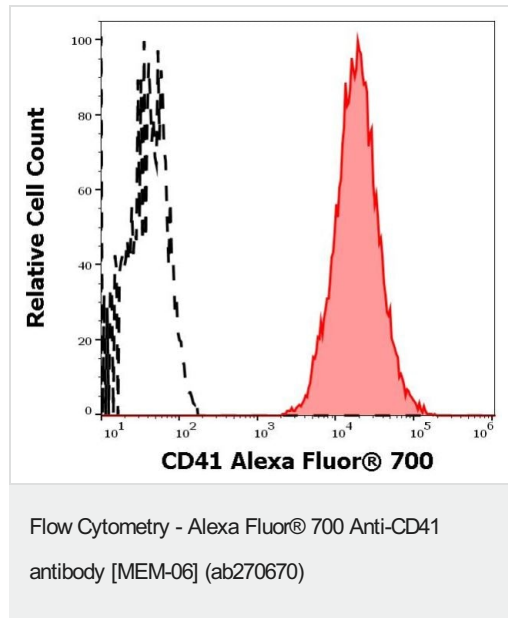
Belongs to the integrin alpha chain family.

Contains 7 FG-GAP repeats.

细胞定位

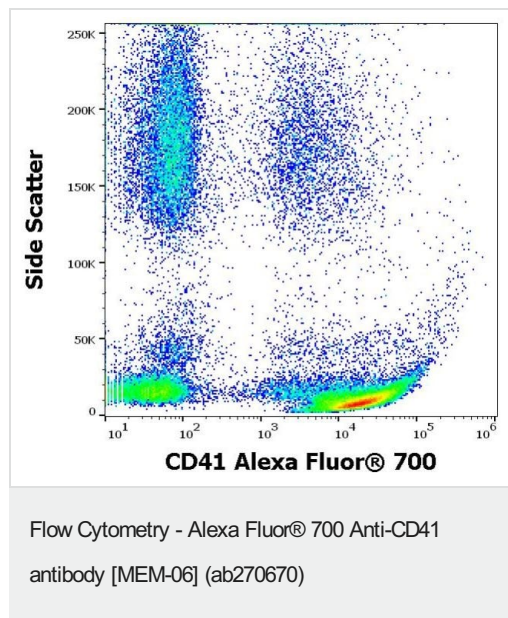
Membrane.

图片



Flow cytometry analysis of human peripheral whole blood labeling CD41 positive thrombocytes (Red) using ab270670. Surface staining.

Control: CD41 negative lymphocytes (Black).



Flow cytometry analysis of human peripheral whole blood labeling CD41 using ab270670. Surface staining.

Please note: All products are "FOR RESEARCH USE ONLY. NOT FOR USE IN DIAGNOSTIC PROCEDURES"

Our Abpromise to you: Quality guaranteed and expert technical support

- Replacement or refund for products not performing as stated on the datasheet

- Valid for 12 months from date of delivery
- Response to your inquiry within 24 hours
- We provide support in Chinese, English, French, German, Japanese and Spanish
- Extensive multi-media technical resources to help you
- We investigate all quality concerns to ensure our products perform to the highest standards

If the product does not perform as described on this datasheet, we will offer a refund or replacement. For full details of the Abpromise, please visit <https://www.abcam.cn/abpromise> or contact our technical team.

Terms and conditions

- Guarantee only valid for products bought direct from Abcam or one of our authorized distributors