

Alexa Fluor® 647 Anti-CD16 antibody [3G8] ab239275

1 图像

概述

产品名称	Alexa Fluor® 647 荧光 Anti-CD16 抗体[3G8]
描述	Alexa Fluor® 647 荧光 小鼠单克隆抗体[3G8] to CD16
宿主	Mouse
偶联物	Alexa Fluor® 647. Ex: 652nm, Em: 668nm
经测试应用	适用于: Flow Cyt
种属反应性	与反应: Human
免疫原	Tissue, cells or virus corresponding to Human CD16. (Human neutrophils).
阳性对照	Flow Cyt: Human peripheral blood.
常规说明	<p>The Life Science industry has been in the grips of a reproducibility crisis for a number of years. Abcam is leading the way in addressing this with our range of recombinant monoclonal antibodies and knockout edited cell lines for gold-standard validation. Please check that this product meets your needs before purchasing.</p> <p>If you have any questions, special requirements or concerns, please send us an inquiry and/or contact our Support team ahead of purchase. Recommended alternatives for this product can be found below, along with publications, customer reviews and Q&As</p>

性能

形式	Liquid
存放说明	Shipped at 4°C. Store at +4°C. Store In the Dark.
存储溶液	<p>pH: 7.4</p> <p>Preservative: 0.0975% Sodium azide</p> <p>Constituent: PBS</p>
纯度	Size exclusion
纯化说明	Purified antibody is conjugated with Alexa Fluor® 647 under optimum conditions. The conjugate is purified by size-exclusion chromatography and adjusted for direct use. No reconstitution is necessary.
克隆	单克隆
克隆编号	3G8
同种型	IgG1

应用

The Abpromise guarantee **Abpromise™**承诺保证使用ab239275于以下的经测试应用

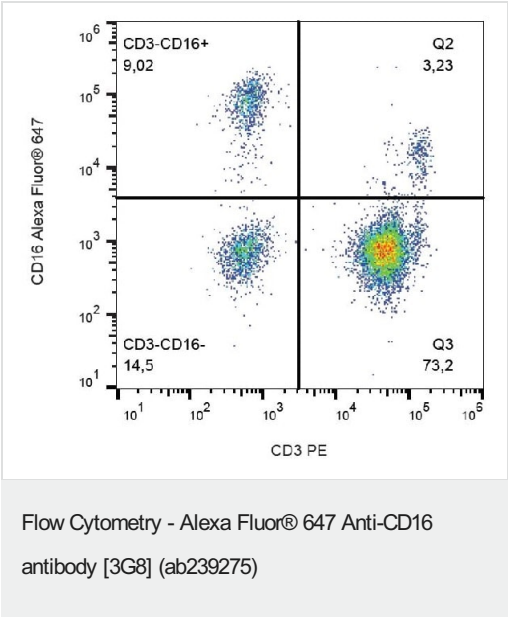
“应用说明”部分 下显示的仅为推荐的起始稀释度;实际最佳的稀释度/浓度应由使用者检定。

应用	Ab评论	说明
Flow Cyt		Use 4µl for 10 ⁶ cells. (or 100 µl of whole blood).

靶标

功能	Receptor for the Fc region of IgG. Binds complexed or aggregated IgG and also monomeric IgG. Mediates antibody-dependent cellular cytotoxicity (ADCC) and other antibody-dependent responses, such as phagocytosis.
组织特异性	Expressed on natural killer cells, macrophages, subpopulation of T-cells, immature thymocytes and placental trophoblasts.
序列相似性	Contains 2 Ig-like C2-type (immunoglobulin-like) domains.
翻译后修饰	Glycosylated. Contains high mannose- and complex-type oligosaccharides. The soluble form is produced by a proteolytic cleavage.
细胞定位	Cell membrane. Secreted. Exists also as a soluble receptor.

图片



Flow cytometric analysis of human peripheral blood labeling CD16 with ab239275. Surface staining.

Please note: All products are "FOR RESEARCH USE ONLY. NOT FOR USE IN DIAGNOSTIC PROCEDURES"

Our Abpromise to you: Quality guaranteed and expert technical support

- Replacement or refund for products not performing as stated on the datasheet
- Valid for 12 months from date of delivery
- Response to your inquiry within 24 hours
- We provide support in Chinese, English, French, German, Japanese and Spanish
- Extensive multi-media technical resources to help you
- We investigate all quality concerns to ensure our products perform to the highest standards

If the product does not perform as described on this datasheet, we will offer a refund or replacement. For full details of the Abpromise, please visit <https://www.abcam.cn/abpromise> or contact our technical team.

Terms and conditions

- Guarantee only valid for products bought direct from Abcam or one of our authorized distributors