




# Alexa Fluor® 594 Anti-TOMM20 antibody [EPR15581-54] - Mitochondrial Marker ab210665

重组 RabMAb

**3 References** **2 图像**

### 概述

|       |   |
|-------|---|
| 产品名称  | Alexa Fluor® 594 荧光 Anti-TOMM20 抗体[EPR15581-54] - Mitochondrial Marker  |
| 描述    | Alexa Fluor® 594 荧光 兔单克隆抗体[EPR15581-54] to TOMM20 - Mitochondrial Marker  |
| 宿主    | Rabbit  |
| 偶联物   | Alexa Fluor® 594. Ex: 590nm, Em: 617nm  |
| 经测试应用 | 适用于: ICC/IF   |
| 种属反应性 | 与反应: Human<br>预测可用于: Mouse, Rat    |
| 免疫原   | Recombinant fragment within Human TOMM20 aa 1 to the C-terminus. The exact immunogen sequence used to generate this antibody is proprietary information. If additional detail on the immunogen is needed to determine the suitability of the antibody for your needs, please <b>contact</b> our Scientific Support team to discuss your requirements.<br>Database link: <a href="#">Q15388</a><br> <a href="#">Run BLAST with</a>  <a href="#">Run BLAST with</a>   |
| 阳性对照  | ICC/IF: HeLa cells  |
| 常规说明  | <p>This product is a recombinant monoclonal antibody, which offers several advantages including:</p> <ul style="list-style-type: none"><li>- High batch-to-batch consistency and reproducibility</li><li>- Improved sensitivity and specificity</li><li>- Long-term security of supply</li><li>- Animal-free production</li></ul> <p>For more information <a href="#">see here</a>.</p> <p>Our RabMAb® technology is a patented hybridoma-based technology for making rabbit monoclonal antibodies. For details on our patents, please refer to <a href="#">RabMAb® patents</a>.</p> <p>Alexa Fluor® is a registered trademark of Molecular Probes, Inc, a Thermo Fisher Scientific Company. The Alexa Fluor® dye included in this product is provided under an intellectual property license from Life Technologies Corporation. As this product contains the Alexa Fluor® dye, the purchase of this product conveys to the buyer the non-transferable right to use the purchased product and components of the product only in research conducted by the buyer (whether the buyer is an academic or for-profit entity). As this product contains the Alexa Fluor® dye the sale of this product is expressly conditioned on the buyer not using the product or its components, or any materials made using the product or its components, in any activity to generate revenue, which</p> |

may include, but is not limited to use of the product or its components: in manufacturing; (ii) to provide a service, information, or data in return for payment (iii) for therapeutic, diagnostic or prophylactic purposes; or (iv) for resale, regardless of whether they are sold for use in research. For information on purchasing a license to this product for purposes other than research, contact Life Technologies Corporation, 5781 Van Allen Way, Carlsbad, CA 92008 USA or [outlicensing@thermofisher.com](mailto:outlicensing@thermofisher.com).

## 性能

|      |  |
|------|--|
| 形式   | Liquid   |
| 存放说明 | Shipped at 4°C. Store at +4°C short term (1-2 weeks). Upon delivery aliquot. Store at -20°C. Avoid freeze / thaw cycle. Store In the Dark. |
| 存储溶液 | pH: 7.40<br>Preservative: 0.02% Sodium azide<br>Constituents: 30% Glycerol (glycerin, glycerine), 1% BSA, PBS                              |
| 纯度   | Protein A purified   |
| 克隆   | 单克隆  |
| 克隆编号 | EPR15581-54  |
| 同种型  | IgG  |

## 应用

**The Abpromise guarantee**      **Abpromise™**承诺保证使用ab210665于以下的经测试应用

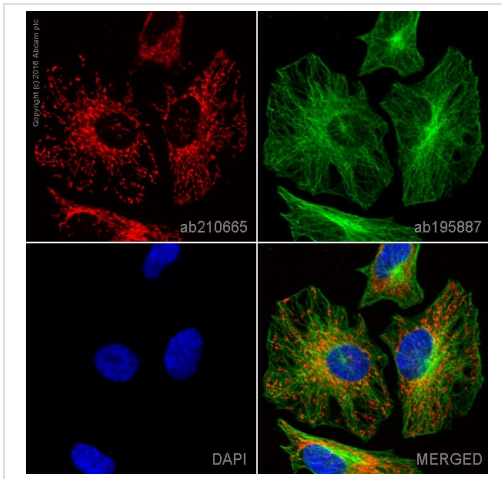
“应用说明”部分 下显示的仅为推荐的起始稀释度;实际最佳的稀释度/浓度应由使用者检定。

| 应用     | Ab评论 | 说明   |
|--------|------|--|
| ICC/IF |      | 1/1000.<br>This product gave a positive signal in HeLa cells fixed with 4% formaldehyde (10 min) |

## 靶标

|       |   |
|-------|---|
| 功能    | Central component of the receptor complex responsible for the recognition and translocation of cytosolically synthesized mitochondrial preproteins. Together with TOM22 functions as the transit peptide receptor at the surface of the mitochondrion outer membrane and facilitates the movement of preproteins into the TOM40 translocation pore. |
| 序列相似性 | Belongs to the Tom20 family.  |
| 细胞定位  | Mitochondrion outer membrane.   |




## 图片



ab210665 staining TOMM20 in HeLa cells. The cells were fixed with 4% formaldehyde (10 min), permeabilized with 0.1% Triton X-100 for 5 minutes and then blocked with 1% BSA/10% normal goat serum/0.3M glycine in 0.1% PBS-Tween for 1h. The cells were then incubated overnight at +4°C with ab210665 at 1/1000 dilution (pseudocolored in red) and **ab195887**, Mouse monoclonal to alpha Tubulin (Alexa Fluor® 488), at 1/250 dilution (shown in green). Nuclear DNA was labelled with DAPI (shown in blue). Image was taken with a confocal microscope (Leica-Microsystems, TCS SP8).

Immunocytochemistry/ Immunofluorescence - Alexa Fluor® 594 Anti-TOMM20 antibody [EPR15581-54] - Mitochondrial Marker (ab210665)

Why choose a recombinant antibody?

|  |  |
|--|--|
| <br><b>Research with confidence</b><br>Consistent and reproducible results | <br><b>Long-term and scalable supply</b><br>Recombinant technology |
| <br><b>Success from the first experiment</b><br>Confirmed specificity     | <br><b>Ethical standards compliant</b><br>Animal-free production  |

Alexa Fluor® 594 Anti-TOMM20 antibody [EPR15581-54] - Mitochondrial Marker (ab210665)

**Please note:** All products are "FOR RESEARCH USE ONLY. NOT FOR USE IN DIAGNOSTIC PROCEDURES"

**Our Abpromise to you: Quality guaranteed and expert technical support**

- Replacement or refund for products not performing as stated on the datasheet
- Valid for 12 months from date of delivery
- Response to your inquiry within 24 hours
- We provide support in Chinese, English, French, German, Japanese and Spanish
- Extensive multi-media technical resources to help you
- We investigate all quality concerns to ensure our products perform to the highest standards

If the product does not perform as described on this datasheet, we will offer a refund or replacement. For full details of the Abpromise, please visit <https://www.abcam.cn/abpromise> or contact our technical team.

## **Terms and conditions**

---

- Guarantee only valid for products bought direct from Abcam or one of our authorized distributors