

# Alexa Fluor® 594 Mouse IgG2b, kappa monoclonal [7E10G10] - Isotype Control ab178002

## 1 图像

### 概述

产品名称	Alexa Fluor® 594 荧光小鼠 IgG2b, kappa 单克隆抗体 [7E10G10] - 同型对照
偶联物	Alexa Fluor® 594. Ex: 590nm, Em: 617nm
特异性	ab178002 was raised in mouse against a yeast-specific protein making it unsuitable for yeast experiments. ab178002 is a suitable control for Human, Rat, Mouse, Monkey, others untested.
经测试应用	<b>适用于:</b> ICC/IF
常规说明	<p>Isotype controls are used to confirm that the primary antibody binding is specific and not a result of non-specific Fc receptor binding or other protein interactions. The isotype control antibody should match the primary antibody's host species, isotype, and possible conjugation. The Control performed appropriately in all materials and platforms that were tested.</p> <p>Product was previously marketed under the MitoSciences sub-brand.</p> <p>The Life Science industry has been in the grips of a reproducibility crisis for a number of years. Abcam is leading the way in addressing this with our range of recombinant monoclonal antibodies and knockout edited cell lines for gold-standard validation. Please check that this product meets your needs before purchasing.</p> <p>If you have any questions, special requirements or concerns, please send us an inquiry and/or contact our Support team ahead of purchase. Recommended alternatives for this product can be found below, along with publications, customer reviews and Q&amp;As</p>

### 性能

形式	Liquid
存放说明	Shipped at 4°C. Upon delivery aliquot. Store at +4°C. Store In the Dark.
存储溶液	Preservative: 0.02% Sodium azide Constituents: 68% PBS, 30% Glycerol (glycerin, glycerine), 1% BSA
纯度	Ammonium Sulphate Precipitation
克隆	单克隆
克隆编号	7E10G10
同种型	IgG2b
轻链类型	kappa

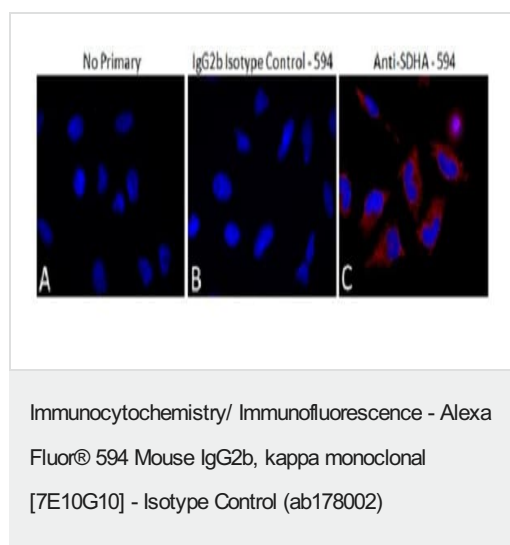
## 应用

**The Abpromise guarantee**      **Abpromise™**承诺保证使用ab178002于以下的经测试应用

“应用说明”部分 下显示的仅为推荐的起始稀释度;实际最佳的稀释度/浓度应由使用者检定。

应用	Ab评论	说明
ICC/IF		Use at an assay dependent concentration.

## 图片



Immunocytochemistry data for ab178002. All panels show HeLa cells stained with DAPI as well as; a no primary control (A), ab178002 at 1 µg/mL (B), an Alexa 594 anti-SDHA conjugated antibody ([ab170172](#)) at 1 µg/mL (C).

Cells were PFA fixed and stored in 0.02%azide/PBS in 4°C. Cells were blocked with 10%GS for 2 hours, primary was diluted in 10%GS and incubated for 2 hours, cells were washed 3X with 1%GS and DAPI was added for 10 minutes in 1%GS.

**Please note:** All products are "FOR RESEARCH USE ONLY. NOT FOR USE IN DIAGNOSTIC PROCEDURES"

## Our Abpromise to you: Quality guaranteed and expert technical support

- Replacement or refund for products not performing as stated on the datasheet
- Valid for 12 months from date of delivery
- Response to your inquiry within 24 hours
- We provide support in Chinese, English, French, German, Japanese and Spanish
- Extensive multi-media technical resources to help you
- We investigate all quality concerns to ensure our products perform to the highest standards

If the product does not perform as described on this datasheet, we will offer a refund or replacement. For full details of the Abpromise, please visit <https://www.abcam.cn/abpromise> or contact our technical team.

## Terms and conditions

- Guarantee only valid for products bought direct from Abcam or one of our authorized distributors