

Alexa Fluor® 594 Anti-CD31 antibody [MEC 7.46] ab307336

重组 RabMAb

2 图像

概述

产品名称	Alexa Fluor® 594 荧光 Anti-CD31 抗体 [MEC 7.46]
描述	Alexa Fluor® 594 荧光 大鼠 单克隆抗体 [MEC 7.46] to CD31
宿主	Rat
偶联物	Alexa Fluor® 594. Ex: 590nm, Em: 617nm
经测试应用	适用于: Flow Cyt, ICC/IF
种属反应性	与反应: Mouse
免疫原	Tissue, cells or virus. This information is proprietary to Abcam and/or its suppliers.
阳性对照	ICC/IF: bEnd.3 (mouse brain endothelial cell) Flow Cyt: B16-F0 (Mouse melanoma epithelial cell-like, Left) / bEnd.3 (Mouse brain endothelioma, Right)
常规说明	<p>This antibody clone is manufactured by Abcam. If you require a custom buffer formulation or conjugation for your experiments, please contact orders@abcam.com.</p> <p>This product is a recombinant monoclonal antibody, which offers several advantages including:</p> <ul style="list-style-type: none">- High batch-to-batch consistency and reproducibility- Improved sensitivity and specificity- Long-term security of supply- Animal-free production <p>For more information see here.</p> <p>Alexa Fluor® is a registered trademark of Molecular Probes, Inc, a Thermo Fisher Scientific Company. The Alexa Fluor® dye included in this product is provided under an intellectual property license from Life Technologies Corporation. As this product contains the Alexa Fluor® dye, the purchase of this product conveys to the buyer the non-transferable right to use the purchased product and components of the product only in research conducted by the buyer (whether the buyer is an academic or for-profit entity). As this product contains the Alexa Fluor® dye the sale of this product is expressly conditioned on the buyer not using the product or its components, or any materials made using the product or its components, in any activity to generate revenue, which may include, but is not limited to use of the product or its components: (i) in manufacturing; (ii) to provide a service, information, or data in return for payment (iii) for therapeutic, diagnostic or prophylactic purposes; or (iv) for resale, regardless of whether they are sold for use in research. For information on purchasing a license to this product for purposes other than research, contact Life Technologies Corporation, 5781 Van Allen Way, Carlsbad, CA 92008 USA or outlicensing@thermofisher.com.</p>

性能

形式	Liquid
存放说明	Shipped at 4°C. Store at +4°C short term (1-2 weeks). Upon delivery aliquot. Store at -20°C long term. Avoid freeze / thaw cycle. Store In the Dark.
存储溶液	pH: 7.40 Preservative: 0.02% Sodium azide Constituents: 30% Glycerol (glycerin, glycerine), 1% BSA, 68% PBS
纯度	Protein A purified
克隆	单克隆
克隆编号	MEC 7.46
同种型	IgG

应用

The Abpromise guarantee **Abpromise™**承诺保证使用ab307336于以下的经测试应用

“应用说明”部分 下显示的仅为推荐的起始稀释度;实际最佳的稀释度/浓度应由使用者检定。

应用	Ab评论	说明
Flow Cyt		1/500.
ICC/IF		1/50.

靶标

功能 Induces susceptibility to atherosclerosis (By similarity). Cell adhesion molecule which is required for leukocyte transendothelial migration (TEM) under most inflammatory conditions. Tyr-690 plays a critical role in TEM and is required for efficient trafficking of PECAM1 to and from the lateral border recycling compartment (LBRC) and is also essential for the LBRC membrane to be targeted around migrating leukocytes. Prevents phagocyte ingestion of closely apposed viable cells by transmitting 'detachment' signals, and changes function on apoptosis, promoting tethering of dying cells to phagocytes (the encounter of a viable cell with a phagocyte via the homophilic interaction of PECAM1 on both cell surfaces leads to the viable cell's active repulsion from the phagocyte. During apoptosis, the inside-out signaling of PECAM1 is somehow disabled so that the apoptotic cell does not actively reject the phagocyte anymore. The lack of this repulsion signal together with the interaction of the eat-me signals and their respective receptors causes the attachment of the apoptotic cell to the phagocyte, thus triggering the process of engulfment). Isoform Delta15 is unable to protect against apoptosis. Modulates BDKRB2 activation. Regulates bradykinin- and hyperosmotic shock-induced ERK1/2 activation in human umbilical cord vein cells (HUVEC).

组织特异性 Expressed on platelets and leukocytes and is primarily concentrated at the borders between endothelial cells. Isoform Long predominates in all tissues examined. Isoform Delta12 is detected only in trachea. Isoform Delta14-15 is only detected in lung. Isoform Delta14 is detected in all tissues examined with the strongest expression in heart. Isoform Delta15 is expressed in brain, testis, ovary, cell surface of platelets, human umbilical vein endothelial cells (HUVECs), Jurkat T-cell leukemia, human erythroleukemia (HEL) and U937 histiocytic lymphoma cell lines (at protein

level).

序列相似性

Contains 6 Ig-like C2-type (immunoglobulin-like) domains.

结构域

The Ig-like C2-type domains 2 and 3 contribute to formation of the complex with BDKRB2 and in regulation of its activity.

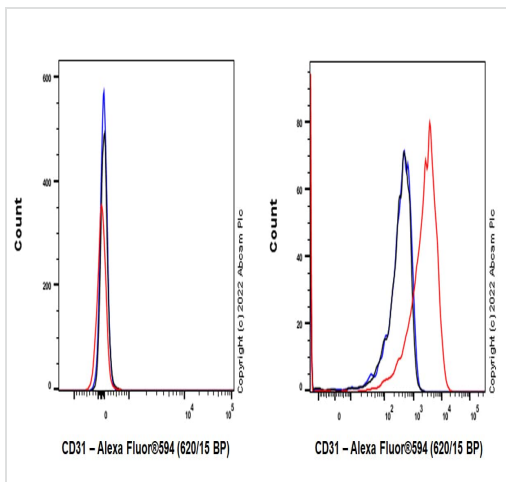
翻译后修饰

Phosphorylated on Ser and Tyr residues after cellular activation. In endothelial cells Fyn mediates mechanical-force (stretch or pull) induced tyrosine phosphorylation.

细胞定位

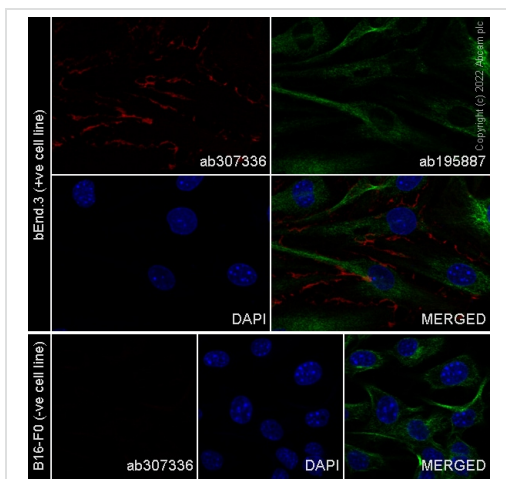
Membrane. Cell junction. Localizes to the lateral border recycling compartment (LBRC) and recycles from the LBRC to the junction in resting endothelial cells and Cell junction. Localizes to the lateral border recycling compartment (LBRC) and recycles from the LBRC to the junction in resting endothelial cells.

图片



Flow Cytometry - Alexa Fluor® 594 Anti-CD31 antibody [MEC 7.46] (ab307336)

Flow cytometric analysis of B16-F0 (Mouse melanoma epithelial cell-like, Left) / bEnd.3 (Mouse brain endothelioma, Right) cells labelling CD31 with ab307336 at 1/500 dilution (0.1ug) (Red) compared with a Rabbit IgG monoclonal [EPR25A] - Isotype Control (Alexa Fluor® 594) (**ab208568**) (Black) isotype control and an unlabelled control (cells without incubation with primary antibody and secondary antibody) (Blue), at 1/ was used as the secondary antibody. Negative control: B16-F0. Gated on viable cells.



Immunocytochemistry/ Immunofluorescence - Alexa Fluor® 594 Anti-CD31 antibody [MEC 7.46] (ab307336)

Immunofluorescent analysis of 4% Paraformaldehyde-fixed, 0.1% TritonX-100 permeabilized bEnd.3 (mouse brain endothelial cell) cells labelling CD31 with ab307336 at 1/50 (10.0 ug/ml) dilution, followed by antibody at 1/None dilution (Green). Confocal image showing membranous staining in bEnd.3 cells. Negative control: B16-F0 (PMID:8082649) Image was taken with a confocal microscope (Leica-Microsystems, TCS SP8). is observed. **ab195887** Anti-alpha Tubulin mouse monoclonal antibody - Microtubule Marker (Alexa Fluor® 488) was used to counterstain tubulin at 1/200 2.5ug/ml dilution (Red). The Nuclear counterstain was DAPI (Blue).

Secondary antibody only control: Secondary antibody is at 1/None dilution.

Please note: All products are "FOR RESEARCH USE ONLY. NOT FOR USE IN DIAGNOSTIC PROCEDURES"

Our Abpromise to you: Quality guaranteed and expert technical support

- Replacement or refund for products not performing as stated on the datasheet
- Valid for 12 months from date of delivery
- Response to your inquiry within 24 hours

- We provide support in Chinese, English, French, German, Japanese and Spanish
- Extensive multi-media technical resources to help you
- We investigate all quality concerns to ensure our products perform to the highest standards

If the product does not perform as described on this datasheet, we will offer a refund or replacement. For full details of the Abpromise, please visit <https://www.abcam.cn/abpromise> or contact our technical team.

Terms and conditions

- Guarantee only valid for products bought direct from Abcam or one of our authorized distributors