


# Alexa Fluor® 488 Anti-CD68 antibody [KP1] ab222914

重组

★★★★★ **2 Abreviews** **1 References** **3 图像**

## 概述

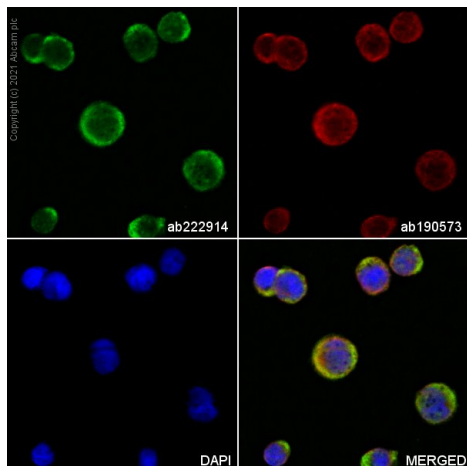
产品名称	Alexa Fluor® 488荧光Anti-CD68抗体[KP1]
描述	Alexa Fluor® 488荧光小鼠单克隆抗体[KP1] to CD68
偶联物	Alexa Fluor® 488. Ex: 495nm, Em: 519nm
经测试应用	<b>适用于:</b> ICC, IHC-P, Flow Cyt (Intra)
种属反应性	<b>与反应:</b> Human <b>预测可用于:</b> Rat, Rabbit 
免疫原	Tissue, cells or virus. This information is proprietary to Abcam and/or its suppliers.
阳性对照	ICC and Flow Cyt: THP-1 cells. IHC-P: normal human tonsil tissue sections.
常规说明	<p>Alexa Fluor® is a registered trademark of Molecular Probes, Inc, a Thermo Fisher Scientific Company. The Alexa Fluor® dye included in this product is provided under an intellectual property license from Life Technologies Corporation. As this product contains the Alexa Fluor® dye, the purchase of this product conveys to the buyer the non-transferable right to use the purchased product and components of the product only in research conducted by the buyer (whether the buyer is an academic or for-profit entity). As this product contains the Alexa Fluor® dye the sale of this product is expressly conditioned on the buyer not using the product or its components, or any materials made using the product or its components, in any activity to generate revenue, which may include, but is not limited to use of the product or its components: in manufacturing; (ii) to provide a service, information, or data in return for payment (iii) for therapeutic, diagnostic or prophylactic purposes; or (iv) for resale, regardless of whether they are sold for use in research. For information on purchasing a license to this product for purposes other than research, contact Life Technologies Corporation, 5781 Van Allen Way, Carlsbad, CA 92008 USA or <a href="mailto:outlicensing@thermofisher.com">outlicensing@thermofisher.com</a>.</p> <p>The Life Science industry has been in the grips of a reproducibility crisis for a number of years. Abcam is leading the way in addressing this with our range of recombinant monoclonal antibodies and knockout edited cell lines for gold-standard validation. Please check that this product meets your needs before purchasing.</p> <p>If you have any questions, special requirements or concerns, please send us an inquiry and/or contact our Support team ahead of purchase. Recommended alternatives for this product can be found below, along with publications, customer reviews and Q&amp;As</p>

<b>性能</b>	
<b>形式</b>	Liquid
<b>存放说明</b>	Shipped at 4°C. Store at +4°C short term (1-2 weeks). Upon delivery aliquot. Store at -20°C. Avoid freeze / thaw cycle. Store In the Dark.
<b>存储溶液</b>	pH: 7.40 Preservative: 0.02% Sodium azide Constituents: 1% BSA, 30% Glycerol (glycerin, glycerine), PBS
<b>纯度</b>	Protein A/G purified
<b>克隆</b>	单克隆
<b>克隆编号</b>	KP1
<b>骨髓瘤</b>	unknown
<b>同种型</b>	IgG1
<b>轻链类型</b>	kappa

<b>应用</b>		
<div> <div>The Abpromise guarantee</div> <div>Abpromise™承诺保证使用ab222914于以下的经测试应用</div> </div> <div>“应用说明”部分 下显示的仅为推荐的起始稀释度;实际最佳的稀释度/浓度应由使用者检定。</div>		
应用	Ab评论	说明
ICC		1/50 - 1/100.
IHC-P		1/100. Perform heat mediated antigen retrieval with citrate buffer pH 6 before commencing with IHC staining protocol.
Flow Cyt (Intra)		1/12500.

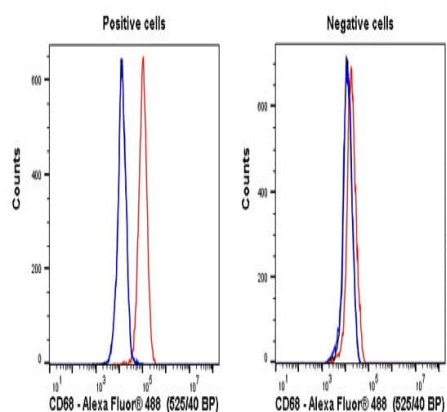
<b>靶标</b>	
<b>功能</b>	Could play a role in phagocytic activities of tissue macrophages, both in intracellular lysosomal metabolism and extracellular cell-cell and cell-pathogen interactions. Binds to tissue- and organ-specific lectins or selectins, allowing homing of macrophage subsets to particular sites. Rapid recirculation of CD68 from endosomes and lysosomes to the plasma membrane may allow macrophages to crawl over selectin-bearing substrates or other cells.
<b>组织特异性</b>	Highly expressed by blood monocytes and tissue macrophages. Also expressed in lymphocytes, fibroblasts and endothelial cells. Expressed in many tumor cell lines which could allow them to attach to selectins on vascular endothelium, facilitating their dissemination to secondary sites.
<b>序列相似性</b>	Belongs to the LAMP family.
<b>翻译后修饰</b>	N- and O-glycosylated.
<b>细胞定位</b>	Cell membrane and Endosome membrane. Lysosome membrane.

<b>图片</b>
-----------



Immunocytochemistry - Alexa Fluor® 488 Anti-CD68 antibody [KP1] (ab222914)

ab222914 staining CD68 in THP-1 cells. The cells were fixed with 100% methanol (5 min), permeabilized with 0.1% Triton X-100 for 5 minutes and then blocked with 1% BSA/10% normal goat serum/0.3M glycine in 0.1% PBS-Tween for 1h. The cells were then incubated overnight at +4°C with ab222914 at 1/100 dilution (shown in Green) and **ab190573**, Rabbit monoclonal to alpha Tubulin (Alexa Fluor® 647), at 1/250 dilution (shown in red). Nuclear DNA was labelled with DAPI (shown in blue). Image was taken with a confocal microscope (Leica-Microsystems, TCS SP8).



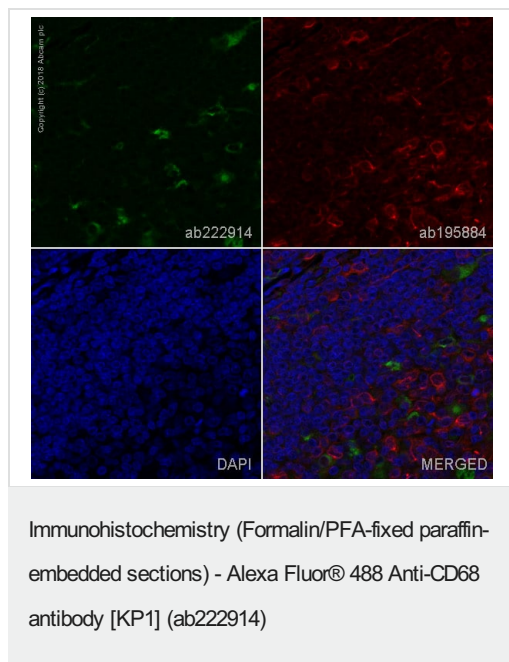
Flow Cytometry (Intracellular) - Alexa Fluor® 488 Anti-CD68 antibody [KP1] (ab222914)

Flow cytometry overlay histogram showing left THP1 positive cells and right negative Jurkat cells stained with ab222914 (red line). The cells were fixed with 4% formaldehyde (10 min) and then permeabilized with 0.1% PBS-Triton X-100 for 15 min. The cells were then incubated in 1x PBS containing 10% normal goat serum to block non-specific protein-protein interaction followed by the antibody (ab222914) ( $1 \times 10^6$  in 100  $\mu$ L at 0.04  $\mu$ g/mL (1/12500)) for 30 min at 22°C.

Isotype control antibody (black line) was mouse IgG1 $\kappa$  Alexa Fluor® 488 used at the same concentration and conditions as the primary antibody. Unlabelled sample (blue line) was also used as a control.

Acquisition of >5000 events were collected using a 50 mW Blue laser (488nm) and 525/40 bandpass filter.

This antibody gave a positive signal in THP1 cells fixed with 80% methanol (5 min) / permeabilized with 0.1% PBS-Triton X-100 for 15 min used under the same conditions.



IHC image of CD68 staining in a section of formalin-fixed paraffin-embedded normal human tonsil\*.

The section was pre-treated using heat mediated antigen retrieval with sodium citrate buffer (pH6) in a Biocare Medical NxGen pressure cooker using retrieval settings of 110°C for 20 minutes. Non-specific protein-protein interactions were then blocked in TBS containing 0.025% (v/v) Triton X-100, 0.3M (w/v) glycine and 1% (w/v) BSA for 1h at room temperature. The section was then incubated overnight at +4°C in TBS containing 0.025% (v/v) Triton X-100 and 1% (w/v) BSA with ab222914 at 1/100 dilution (shown in green) and counterstained using **ab195884**, Rat monoclonal to Tubulin (Alexa Fluor® 647), at 1/250 dilution (shown in red). Nuclear DNA was labelled with DAPI (shown in blue). The section was then mounted using Fluoromount®.

Image was taken with a confocal microscope (Leica-Microsystems, TCS SP8).

For other IHC staining systems (automated and non-automated), customers should optimize variable parameters such as antigen retrieval conditions, antibody concentrations and incubation times.

\*Tissue obtained from the Human Research Tissue Bank, supported by the NIHR Cambridge Biomedical Research Centre.

**Please note:** All products are "FOR RESEARCH USE ONLY. NOT FOR USE IN DIAGNOSTIC PROCEDURES"

## Our Abpromise to you: Quality guaranteed and expert technical support

- Replacement or refund for products not performing as stated on the datasheet
- Valid for 12 months from date of delivery
- Response to your inquiry within 24 hours
- We provide support in Chinese, English, French, German, Japanese and Spanish
- Extensive multi-media technical resources to help you
- We investigate all quality concerns to ensure our products perform to the highest standards

If the product does not perform as described on this datasheet, we will offer a refund or replacement. For full details of the Abpromise, please visit <https://www.abcam.cn/abpromise> or contact our technical team.

## Terms and conditions

- Guarantee only valid for products bought direct from Abcam or one of our authorized distributors