

# Alexa Fluor® 488 Anti-CD55 antibody [MEM-118] ab187775

## 1 图像

### 概述

<b>产品名称</b>	Alexa Fluor® 488荧光Anti-CD55抗体[MEM-118]
<b>描述</b>	Alexa Fluor® 488荧光小鼠单克隆抗体[MEM-118] to CD55
<b>宿主</b>	Mouse
<b>偶联物</b>	Alexa Fluor® 488. Ex: 495nm, Em: 519nm
<b>特异性</b>	This antibody recognizes an epitope in SCR4 domain of CD55
<b>经测试应用</b>	<b>适用于:</b> Flow Cyt
<b>种属反应性</b>	<b>与反应:</b> Human, Non human primates
<b>免疫原</b>	Tissue, cells or virus corresponding to Human CD55. HPB-ALL human T cell line
<b>常规说明</b>	<p>The Life Science industry has been in the grips of a reproducibility crisis for a number of years. Abcam is leading the way in addressing this with our range of recombinant monoclonal antibodies and knockout edited cell lines for gold-standard validation. Please check that this product meets your needs before purchasing.</p> <p>If you have any questions, special requirements or concerns, please send us an inquiry and/or contact our Support team ahead of purchase. Recommended alternatives for this product can be found below, along with publications, customer reviews and Q&amp;As</p>

### 性能

<b>形式</b>	Liquid
<b>存放说明</b>	Shipped at 4°C. Store at +4°C. Do Not Freeze. Store In the Dark.
<b>存储溶液</b>	pH: 8.0 Preservative: 0.097% Sodium azide Constituents: 0.2% BSA, 99% PBS
<b>纯度</b>	Size exclusion
<b>克隆</b>	单克隆
<b>克隆编号</b>	MEM-118
<b>同种型</b>	IgM

### 应用

## The Abpromise guarantee

**Abpromise™** 承诺保证使用 ab187775 于以下的经测试应用

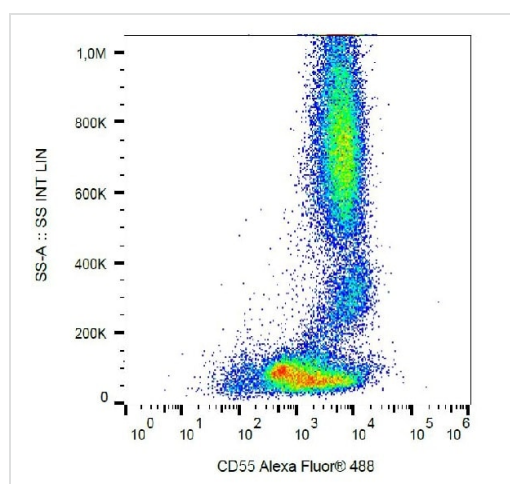
“应用说明”部分 下显示的仅为推荐的起始稀释度;实际最佳的稀释度/浓度应由使用者检定。

应用	Ab评论	说明
Flow Cyt		Use 4µl for 10 <sup>6</sup> cells. or 4µl/100 µl of whole blood

## 靶标

<b>功能</b>	This protein recognizes C4b and C3b fragments that condense with cell-surface hydroxyl or amino groups when nascent C4b and C3b are locally generated during C4 and c3 activation. Interaction of daf with cell-associated C4b and C3b polypeptides interferes with their ability to catalyze the conversion of C2 and factor B to enzymatically active C2a and Bb and thereby prevents the formation of C4b2a and C3bBb, the amplification convertases of the complement cascade.
<b>组织特异性</b>	Expressed on the plasma membranes of all cell types that are in intimate contact with plasma complement proteins. It is also found on the surfaces of epithelial cells lining extracellular compartments, and variants of the molecule are present in body fluids and in extracellular matrix.
<b>序列相似性</b>	Belongs to the receptors of complement activation (RCA) family. Contains 4 Sushi (CCP/SCR) domains.
<b>结构域</b>	The first Sushi domain (SCR1) is not necessary for function. SCR2 and SCR4 provide the proper conformation for the active site on SCR3.
<b>翻译后修饰</b>	The Ser/Thr-rich domain is heavily O-glycosylated.
<b>细胞定位</b>	Cell membrane.

## 图片



Flow cytometry analysis of human peripheral blood cells labeling CD55 with ab187775.

Flow Cytometry - Alexa Fluor® 488 Anti-CD55 antibody [MEM-118] (ab187775)

**Please note:** All products are "FOR RESEARCH USE ONLY. NOT FOR USE IN DIAGNOSTIC PROCEDURES"

## **Our Abpromise to you: Quality guaranteed and expert technical support**

---

- Replacement or refund for products not performing as stated on the datasheet
- Valid for 12 months from date of delivery
- Response to your inquiry within 24 hours
  
- We provide support in Chinese, English, French, German, Japanese and Spanish
- Extensive multi-media technical resources to help you
- We investigate all quality concerns to ensure our products perform to the highest standards

If the product does not perform as described on this datasheet, we will offer a refund or replacement. For full details of the Abpromise, please visit <https://www.abcam.cn/abpromise> or contact our technical team.

## **Terms and conditions**

---

- Guarantee only valid for products bought direct from Abcam or one of our authorized distributors