

# Alexa Fluor® 488 Anti-CD147 antibody [MEM-M6/1], prediluted ab187600

**1 References**   **1 图像**

### 概述

产品名称	Alexa Fluor® 488荧光Anti-CD147抗体[MEM-M6/1], prediluted
描述	Alexa Fluor® 488荧光小鼠单克隆抗体[MEM-M6/1] to CD147, prediluted
宿主	Mouse
偶联物	Alexa Fluor® 488. Ex: 495nm, Em: 519nm
经测试应用	适用于: Flow Cyt
种属反应性	与反应: Human
免疫原	Recombinant fragment corresponding to Human CD147. (Protein A-CR purified soluble recombinant form of CD147, CD147Rg, which consists of the cDNA coding for the hinge region, CH2-and CH3 domain of Human IgG1). Database link: <b>P35613</b>
表位	ab187600 recognizes an epitope in the N-terminal Ig domain (D1) of CD147.
常规说明	<p>ab187600 is a high-affinity antibody capable of binding to unstimulated peripheral blood T cells.</p> <p>The Life Science industry has been in the grips of a reproducibility crisis for a number of years. Abcam is leading the way in addressing this with our range of recombinant monoclonal antibodies and knockout edited cell lines for gold-standard validation. Please check that this product meets your needs before purchasing.</p> <p>If you have any questions, special requirements or concerns, please send us an inquiry and/or contact our Support team ahead of purchase. Recommended alternatives for this product can be found below, along with publications, customer reviews and Q&amp;As</p>

### 性能

形式	Liquid
存放说明	Shipped at 4°C. Store at +4°C. Store In the Dark.
存储溶液	<p>pH: 7.4</p> <p>Preservative: 0.097% Sodium azide</p> <p>Constituents: 99% PBS, 0.2% BSA</p>
纯度	Size exclusion
纯化说明	Purified antibody is conjugated with Alexa Fluor® 488 under optimum conditions. The conjugate

is purified by size-exclusion chromatography and adjusted for direct use. No reconstitution is necessary.

克隆  
克隆编号  
同种型

单克隆  
MEM-M6/1  
IgG1

## 应用

**The Abpromise guarantee**      **Abpromise™** 承诺保证使用 ab187600 于以下的经测试应用

“应用说明”部分 下显示的仅为推荐的起始稀释度;实际最佳的稀释度/浓度应由使用者检定。

应用	Ab 评论	说明
Flow Cyt		Use 4µl for 10 <sup>6</sup> cells. (or 100 µl of whole blood). <b>ab171463</b> - Mouse monoclonal IgG1, is suitable for use as an isotype control with this antibody.

## 靶标

**功能**      Plays pivotal roles in spermatogenesis, embryo implantation, neural network formation and tumor progression. Stimulates adjacent fibroblasts to produce matrix metalloproteinases (MMPs). May target monocarboxylate transporters SLC16A1, SLC16A3 and SLC16A8 to plasma membranes of retinal pigment epithelium and neural retina. Seems to be a receptor for oligomannosidic glycans. In vitro, promotes outgrowth of astrocytic processes.

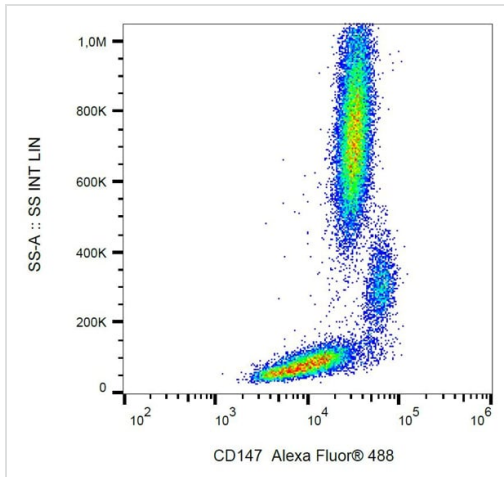
**组织特异性**      Present only in vascular endothelium in non-neoplastic regions of the brain, whereas it is present in tumor cells but not in proliferating blood vessels in malignant gliomas.

**序列相似性**      Contains 1 Ig-like C2-type (immunoglobulin-like) domain.  
Contains 1 Ig-like V-type (immunoglobulin-like) domain.

**翻译后修饰**      N-glycosylated.

**细胞定位**      Cell membrane. Melanosome. Colocalizes with SLC16A1 and SLC16A8 (By similarity). Identified by mass spectrometry in melanosome fractions from stage I to stage IV.

## 图片



Flow cytometry analysis of human peripheral blood cells labelling CD147 with ab187600.

Flow Cytometry - Alexa Fluor® 488 Anti-CD147 antibody [MEM-M6/1], prediluted (ab187600)

**Please note:** All products are "FOR RESEARCH USE ONLY. NOT FOR USE IN DIAGNOSTIC PROCEDURES"

### Our Abpromise to you: Quality guaranteed and expert technical support

- Replacement or refund for products not performing as stated on the datasheet
- Valid for 12 months from date of delivery
- Response to your inquiry within 24 hours
- We provide support in Chinese, English, French, German, Japanese and Spanish
- Extensive multi-media technical resources to help you
- We investigate all quality concerns to ensure our products perform to the highest standards

If the product does not perform as described on this datasheet, we will offer a refund or replacement. For full details of the Abpromise, please visit <https://www.abcam.cn/abpromise> or contact our technical team.

### Terms and conditions

- Guarantee only valid for products bought direct from Abcam or one of our authorized distributors