

Alexa Fluor® 405 Anti-Cathepsin D antibody [EPR3057Y]
ab207875

重组 RabMAb

2 图像

概述

产品名称	Alexa Fluor® 405荧光Anti-Cathepsin D抗体[EPR3057Y]
描述	Alexa Fluor® 405荧光兔单克隆抗体[EPR3057Y] to Cathepsin D
宿主	Rabbit
偶联物	Alexa Fluor® 405. Ex: 402nm, Em: 421nm
经测试应用	适用于: Flow Cyt (Intra)
种属反应性	与反应: Human 预测可用于: Mouse 
免疫原	Synthetic peptide. This information is proprietary to Abcam and/or its suppliers.
阳性对照	Flow Cyt (intra): MCF7 cells.
常规说明	<p>This product is a recombinant monoclonal antibody, which offers several advantages including:</p> <ul style="list-style-type: none">- High batch-to-batch consistency and reproducibility- Improved sensitivity and specificity- Long-term security of supply- Animal-free production <p>For more information see here.</p> <p>Our RabMAb® technology is a patented hybridoma-based technology for making rabbit monoclonal antibodies. For details on our patents, please refer to RabMAb® patents.</p> <p>Alexa Fluor® is a registered trademark of Molecular Probes, Inc, a Thermo Fisher Scientific Company. The Alexa Fluor® dye included in this product is provided under an intellectual property license from Life Technologies Corporation. As this product contains the Alexa Fluor® dye, the purchase of this product conveys to the buyer the non-transferable right to use the purchased product and components of the product only in research conducted by the buyer (whether the buyer is an academic or for-profit entity). As this product contains the Alexa Fluor® dye the sale of this product is expressly conditioned on the buyer not using the product or its components, or any materials made using the product or its components, in any activity to generate revenue, which may include, but is not limited to use of the product or its components: in manufacturing; (ii) to provide a service, information, or data in return for payment (iii) for therapeutic, diagnostic or prophylactic purposes; or (iv) for resale, regardless of whether they are sold for use in research. For information on purchasing a license to this product for purposes other than research, contact Life Technologies Corporation, 5781 Van Allen Way, Carlsbad, CA 92008 USA or</p>

性能

形式	Liquid
存放说明	Shipped at 4°C. Store at +4°C short term (1-2 weeks). Upon delivery aliquot. Store at -20°C. Avoid freeze / thaw cycle. Store In the Dark.
存储溶液	pH: 7.40 Preservative: 0.02% Sodium azide Constituents: PBS, 1% BSA, 30% Glycerol (glycerin, glycerine)
纯度	Protein A purified
克隆	单克隆
克隆编号	EPR3057Y
同种型	IgG

应用

The Abpromise guarantee **Abpromise™**承诺保证使用ab207875于以下的经测试应用

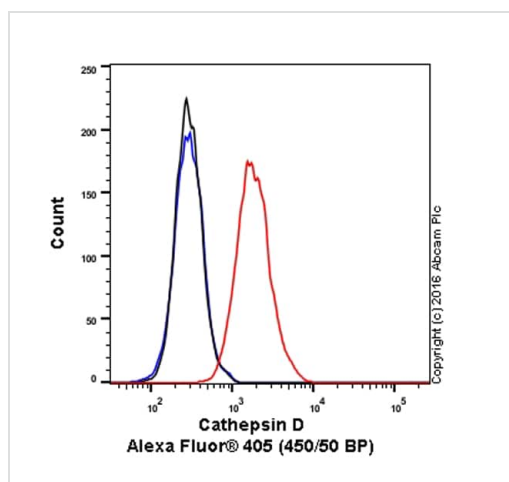
“应用说明”部分 下显示的仅为推荐的起始稀释度;实际最佳的稀释度/浓度应由使用者检定。

应用	Ab评论	说明
Flow Cyt (Intra)		1/50. The cellular localisation of this product has been verified in ICC/IF.

靶标

功能	Acid protease active in intracellular protein breakdown. Involved in the pathogenesis of several diseases such as breast cancer and possibly Alzheimer disease.
组织特异性	Expressed in the aorta extracellular space (at protein level).
疾病相关	Ceroid lipofuscinosis, neuronal, 10
序列相似性	Belongs to the peptidase A1 family. Contains 1 peptidase A1 domain.
翻译后修饰	N- and O-glycosylated.
细胞定位	Lysosome. Melanosome. Secreted, extracellular space. Identified by mass spectrometry in melanosome fractions from stage I to stage IV. In aortic samples, detected as an extracellular protein loosely bound to the matrix (PubMed:20551380).

图片



Flow Cytometry (Intracellular) - Alexa Fluor® 405
Anti-Cathepsin D antibody [EPR3057Y] (ab207875)

Overlay histogram showing MCF7 cells stained with ab207875 (red line). The cells were fixed with 80% methanol (5 min) and then permeabilized with 0.1% PBS-Triton X-100 for 15 min. The cells were blocked with Image-iT® FX Signal Enhancer for 30 min at 22°C and then blocked with 1x PBS / 10% normal goat serum followed by the antibody (ab207875, 1/50 dilution) for 30 min at 22°C.

Isotype control antibody (black line) was rabbit IgG (monoclonal) Alexa Fluor® 405 (**ab208150**) used at the same concentration and conditions as the primary antibody. Unlabelled sample (blue line) was also used as a control.

Acquisition of >5,000 events were collected using a 50 mW Violet laser (405nm) and 450/50 bandpass filter.

Why choose a recombinant antibody?

 <p>Research with confidence Consistent and reproducible results</p>	 <p>Long-term and scalable supply Recombinant technology</p>
 <p>Success from the first experiment Confirmed specificity</p>	 <p>Ethical standards compliant Animal-free production</p>

Alexa Fluor® 405 Anti-Cathepsin D antibody
[EPR3057Y] (ab207875)

Please note: All products are "FOR RESEARCH USE ONLY. NOT FOR USE IN DIAGNOSTIC PROCEDURES"

Our Abpromise to you: Quality guaranteed and expert technical support

- Replacement or refund for products not performing as stated on the datasheet
- Valid for 12 months from date of delivery
- Response to your inquiry within 24 hours
- We provide support in Chinese, English, French, German, Japanese and Spanish
- Extensive multi-media technical resources to help you
- We investigate all quality concerns to ensure our products perform to the highest standards

If the product does not perform as described on this datasheet, we will offer a refund or replacement. For full details of the Abpromise, please visit <https://www.abcam.cn/abpromise> or contact our technical team.

Terms and conditions

- Guarantee only valid for products bought direct from Abcam or one of our authorized distributors