


# Alexa Fluor® 405 Anti-Calreticulin antibody [EPR3924] - ER Marker ab210431

敲除验证
重组
RabMAb

[3 References](#)
[3 图像](#)

### 概述

<b>产品名称</b>	Alexa Fluor® 405 荧光 Anti-Calreticulin 抗体 [EPR3924] - ER Marker
<b>描述</b>	Alexa Fluor® 405 荧光 兔 单克隆 抗体 [EPR3924] to Calreticulin - ER Marker
<b>宿主</b>	Rabbit
<b>偶联物</b>	Alexa Fluor® 405. Ex: 402nm, Em: 421nm
<b>经测试应用</b>	<b>适用于:</b> Flow Cyt (Intra)
<b>种属反应性</b>	<b>与反应:</b> Human <b>预测可用于:</b> Mouse, Rat, Monkey 
<b>免疫原</b>	Synthetic peptide. This information is proprietary to Abcam and/or its suppliers.
<b>阳性对照</b>	Flow Cyt (intra): HeLa cells. HAP1-WT cells.
<b>常规说明</b>	<p>This product is a recombinant monoclonal antibody, which offers several advantages including:</p> <ul style="list-style-type: none"> <li>- High batch-to-batch consistency and reproducibility</li> <li>- Improved sensitivity and specificity</li> <li>- Long-term security of supply</li> <li>- Animal-free production</li> </ul> <p>For more information <a href="#">see here</a>.</p> <p>Our RabMAb® technology is a patented hybridoma-based technology for making rabbit monoclonal antibodies. For details on our patents, please refer to <a href="#">RabMAb® patents</a>.</p> <p>Alexa Fluor® is a registered trademark of Molecular Probes, Inc, a Thermo Fisher Scientific Company. The Alexa Fluor® dye included in this product is provided under an intellectual property license from Life Technologies Corporation. As this product contains the Alexa Fluor® dye, the purchase of this product conveys to the buyer the non-transferable right to use the purchased product and components of the product only in research conducted by the buyer (whether the buyer is an academic or for-profit entity). As this product contains the Alexa Fluor® dye the sale of this product is expressly conditioned on the buyer not using the product or its components, or any materials made using the product or its components, in any activity to generate revenue, which may include, but is not limited to use of the product or its components: (i) in manufacturing; (ii) to provide a service, information, or data in return for payment (iii) for therapeutic, diagnostic or prophylactic purposes; or (iv) for resale, regardless of whether they are sold for use in research. For information on purchasing a license to this product for purposes other than research, contact Life Technologies Corporation, 5781 Van Allen Way, Carlsbad, CA 92008 USA or</p>

## 性能

形式	Liquid
存放说明	Shipped at 4°C. Store at +4°C short term (1-2 weeks). Upon delivery aliquot. Store at -20°C. Avoid freeze / thaw cycle. Store In the Dark.
存储溶液	pH: 7.40 Preservative: 0.02% Sodium azide Constituents: PBS, 1% BSA, 30% Glycerol (glycerin, glycerine)
纯度	Protein A purified
克隆	单克隆
克隆编号	EPR3924
同种型	IgG

## 应用

**The Abpromise guarantee**      **Abpromise™** 承诺保证使用 ab210431 于以下的经测试应用

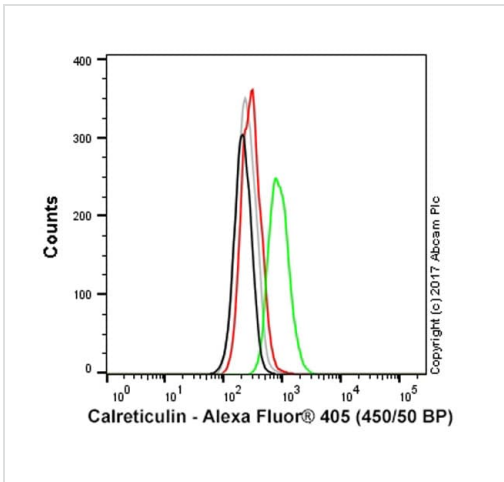
“应用说明”部分 下显示的仅为推荐的起始稀释度;实际最佳的稀释度/浓度应由使用者检定。

应用	Ab评论	说明
Flow Cyt (Intra)		1/50.

## 靶标

功能	Molecular calcium-binding chaperone promoting folding, oligomeric assembly and quality control in the ER via the calreticulin/calnexin cycle. This lectin interacts transiently with almost all of the monoglucosylated glycoproteins that are synthesized in the ER. Interacts with the DNA-binding domain of NR3C1 and mediates its nuclear export.
序列相似性	Belongs to the calreticulin family.
结构域	Can be divided into a N-terminal globular domain, a proline-rich P-domain forming an elongated arm-like structure and a C-terminal acidic domain. The P-domain binds one molecule of calcium with high affinity, whereas the acidic C-domain binds multiple calcium ions with low affinity. The interaction with glycans occurs through a binding site in the globular lectin domain. The zinc binding sites are localized to the N-domain. Associates with PDIA3 through the tip of the extended arm formed by the P-domain.
细胞定位	Endoplasmic reticulum lumen. Cytoplasm > cytosol. Secreted > extracellular space > extracellular matrix. Cell surface. Also found in cell surface (T cells), cytosol and extracellular matrix. Associated with the lytic granules in the cytolytic T-lymphocytes.

## 图片

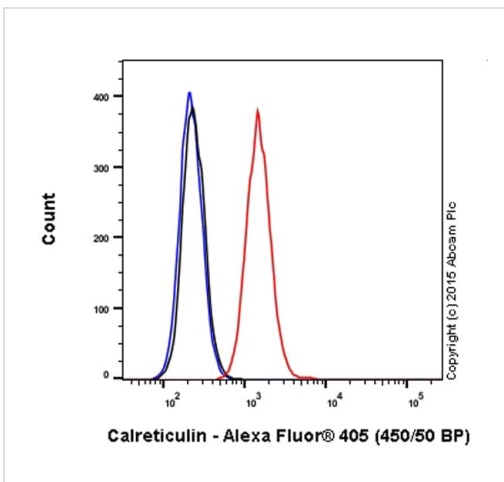


Flow Cytometry (Intracellular) - Alexa Fluor® 405  
Anti-Calreticulin antibody [EPR3924] - ER Marker  
(ab210431)

Overlay histogram showing HAP1 wildtype (green line) and HAP1-CARL knockout cells (red line) stained with ab210431. The cells were fixed with 80% methanol (5 min), and then permeabilized with 0.1% PBS-Triton X-100 for 15 min. The cells were then incubated in 1x PBS / 10% normal goat serum to block non-specific protein-protein interactions followed by the antibody (ab210431, 10µg/ml dilution) for 30 min at 22°C.

A rabbit monoclonal IgG isotype control antibody (**ab208150**) was used at the same concentration and conditions as the primary antibody (HAP1 wildtype - black line, HAP1-CARL knockout - grey line). Unlabelled sample was also used as a control (this line is not shown for the purpose of simplicity).

Acquisition of >5,000 events were collected using a 50 mW Violet laser (405nm) and 450/50 bandpass filter.



Flow Cytometry (Intracellular) - Alexa Fluor® 405  
Anti-Calreticulin antibody [EPR3924] - ER Marker  
(ab210431)

Overlay histogram showing HeLa cells stained with ab210431 (red line). The cells were fixed with 80% methanol (5 min) and then permeabilized with 0.1% PBS-Triton X-100 for 15 min, blocked with Image-iT® FX Signal Enhancer for 30 min at 22°C and then blocked with 1x PBS / 10% normal goat serum for 1 hr at 22°C. Cells were then incubated with the antibody (ab210431, 1/50 dilution) for 30 min at 22°C.

Isotype control antibody (black line) was rabbit IgG (monoclonal) Alexa Fluor® 405 (**ab208150**) used at the same concentration and conditions as the primary antibody. Unlabelled sample (blue line) was also used as a control.

Acquisition of >5,000 events were collected using a 50mW violet laser (405nm) and 450/50 bandpass filter.

### Why choose a recombinant antibody?



**Research with confidence**  
Consistent and reproducible results



**Long-term and scalable supply**  
Recombinant technology



**Success from the first experiment**  
Confirmed specificity



**Ethical standards compliant**  
Animal-free production

Alexa Fluor® 405 Anti-Calreticulin antibody

[EPR3924] - ER Marker (ab210431)

**Please note:** All products are "FOR RESEARCH USE ONLY. NOT FOR USE IN DIAGNOSTIC PROCEDURES"

### Our Abpromise to you: Quality guaranteed and expert technical support

---

- Replacement or refund for products not performing as stated on the datasheet
- Valid for 12 months from date of delivery
- Response to your inquiry within 24 hours
- We provide support in Chinese, English, French, German, Japanese and Spanish
- Extensive multi-media technical resources to help you
- We investigate all quality concerns to ensure our products perform to the highest standards

If the product does not perform as described on this datasheet, we will offer a refund or replacement. For full details of the Abpromise, please visit <https://www.abcam.cn/abpromise> or contact our technical team.

### Terms and conditions

---

- Guarantee only valid for products bought direct from Abcam or one of our authorized distributors