

# Anti-Aldolase + Aldolase B + Aldolase C antibody [EPR9724(B)] ab169544

**重组 RabMAb**

★★★★☆ **3 Abreviews** **9 References** **5 图像**

### 概述

<b>产品名称</b>	Anti-Aldolase + Aldolase B + Aldolase C抗体[EPR9724(B)]
<b>描述</b>	兔单克隆抗体[EPR9724(B)] to Aldolase + Aldolase B + Aldolase C
<b>宿主</b>	Rabbit
<b>经测试应用</b>	<b>适用于:</b> Flow Cyt (Intra), WB <b>不适用于:</b> ICC/IF or IHC-P
<b>种属反应性</b>	<b>与反应:</b> Mouse, Rat, Human, Pig
<b>免疫原</b>	Synthetic peptide within Human Aldolase aa 1-100. The exact sequence is proprietary. Database link: <b><u>P04075</u></b>
<b>阳性对照</b>	WB: A549 and HeLa whole cell lysate ( <b><u>ab150035</u></b> ); human fetal brain, fetal liver and skeletal muscle, mouse brain, rat brain tissue lysates. His-tagged human Aldolase A, B and C full-length recombinant protein Flow Cyt (intra): MCF7 cells.
<b>常规说明</b>	This product is a recombinant monoclonal antibody, which offers several advantages including: <ul style="list-style-type: none"> <li>- High batch-to-batch consistency and reproducibility</li> <li>- Improved sensitivity and specificity</li> <li>- Long-term security of supply</li> <li>- Animal-free production</li> </ul> For more information <b><u>see here</u></b> . Our RabMAb <sup>®</sup> technology is a patented hybridoma-based technology for making rabbit monoclonal antibodies. For details on our patents, please refer to <b><u>RabMAb<sup>®</sup> patents</u></b> .

### 性能

<b>形式</b>	Liquid
<b>存放说明</b>	Shipped at 4°C. Store at +4°C short term (1-2 weeks). Upon delivery aliquot. Store at -20°C long term. Avoid freeze / thaw cycle.
<b>存储溶液</b>	Preservative: 0.01% Sodium azide Constituents: 40% Glycerol (glycerin, glycerine), 59% PBS, 0.05% BSA
<b>纯度</b>	Protein A purified

克隆 单克隆  
 克隆编号 EPR9724(B)  
 同种型 IgG

## 应用

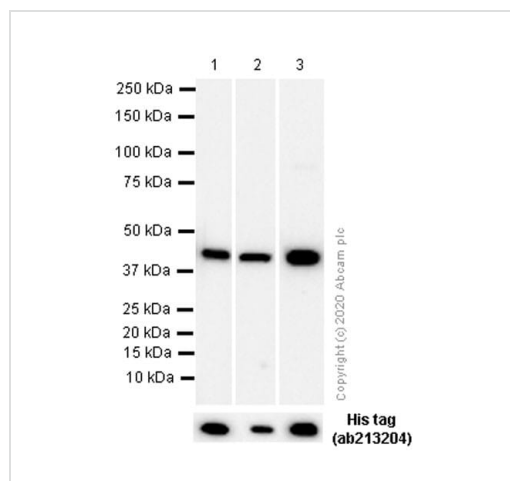
**The Abpromise guarantee** **Abpromise™**承诺保证使用ab169544于以下的经测试应用

“应用说明”部分下显示的仅为推荐的起始稀释度;实际最佳的稀释度/浓度应由使用者检定。

应用	Ab评论	说明
Flow Cyt (Intra)		1/20.
WB	★★★★☆ (3)	1/1000 - 1/10000. Predicted molecular weight: 39 kDa.

应用说明 Is unsuitable for ICC/IF or IHC-P.

## 图片



Western blot - Anti-Aldolase + Aldolase B + Aldolase C antibody [EPR9724(B)] (ab169544)

**All lanes** : Anti-Aldolase + Aldolase B + Aldolase C antibody [EPR9724(B)] (ab169544) at 1/1000 dilution

**Lane 1** : His-tagged human Aldolase A full-length recombinant protein

**Lane 2** : His-tagged human Aldolase B full-length recombinant protein

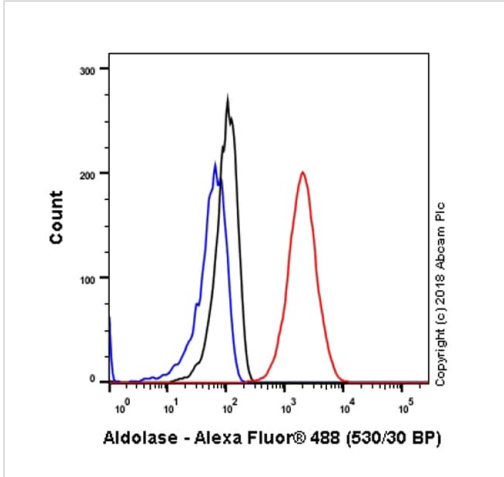
**Lane 3** : His-tagged human Aldolase C full-length recombinant protein

Lysates/proteins at 0.01 µg per lane.

### Secondary

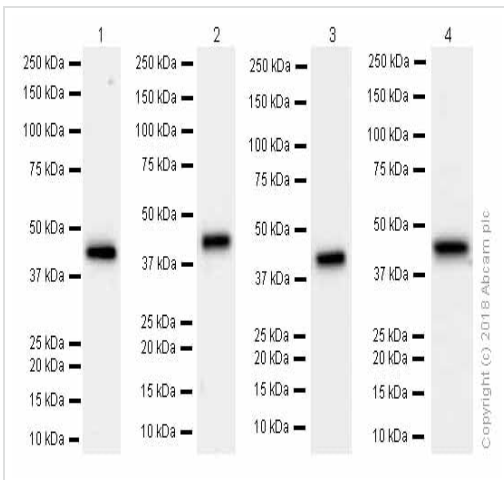
**All lanes** : Goat Anti-Rabbit IgG H&L (HRP) (**ab97051**) at 1/20000 dilution

**Predicted band size:** 39 kDa



Flow Cytometry (Intracellular) - Anti-Aldolase + Aldolase B + Aldolase C antibody [EPR9724(B)] (ab169544)

Intracellular Flow Cytometry analysis of MCF7 (Human breast adenocarcinoma epithelial cell) cells labeling Aldolase with purified ab169544 at 1/20 dilution (10µg/ml) (red). Cells were fixed with 4% Paraformaldehyde. A Goat anti rabbit IgG (Alexa Fluor® 488) secondary antibody was used at 1/2000 dilution. Isotype control - Rabbit monoclonal IgG (Black). Unlabeled control - Cell without incubation with primary antibody and secondary antibody (Blue).



Western blot - Anti-Aldolase + Aldolase B + Aldolase C antibody [EPR9724(B)] (ab169544)

**All lanes** : Anti-Aldolase + Aldolase B + Aldolase C antibody [EPR9724(B)] (ab169544) at 0.02 µg/ml

**Lane 1** : HeLa (Human cervix adenocarcinoma epithelial cell) whole cell lysates

**Lane 2** : Mouse brain lysates

**Lane 3** : Rat brain lysates

**Lane 4** : Pig heart lysates

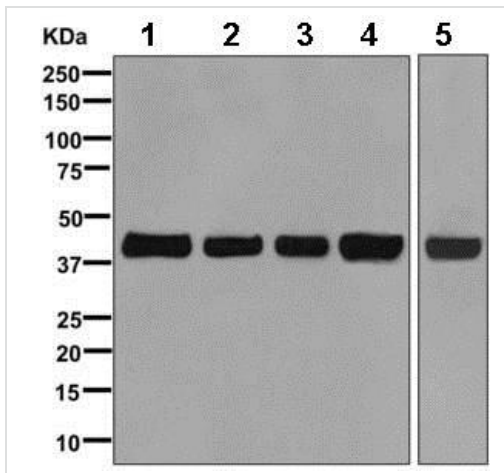
Lysates/proteins at 15 µg per lane.

**Secondary**

**All lanes** : Goat Anti-Rabbit IgG H&L (HRP) ([ab97051](#)) at 1/20000 dilution

**Predicted band size:** 39 kDa

Blocking and diluting buffer: 5% NFDm/TBST.



Western blot - Anti-Aldolase + Aldolase B + Aldolase C antibody [EPR9724(B)] (ab169544)

**All lanes** : Anti-Aldolase + Aldolase B + Aldolase C antibody [EPR9724(B)] (ab169544) at 1/1000 dilution (Unpurified)

**Lane 1** : A549 lysate

**Lane 2** : Fetal liver lysate

**Lane 3** : HeLa lysate

**Lane 4** : Fetal brain lysate

**Lane 5** : Human skeletal muscle lysate





Lysates/proteins at 10 µg per lane.

**Secondary**

**All lanes** : HRP labeled goat anti-rabbit at 1/2000 dilution

**Predicted band size:** 39 kDa

Why choose a recombinant antibody?

 <b>Research with confidence</b> Consistent and reproducible results	 <b>Long-term and scalable supply</b> Recombinant technology
 <b>Success from the first experiment</b> Confirmed specificity	 <b>Ethical standards compliant</b> Animal-free production

Anti-Aldolase + Aldolase B + Aldolase C antibody [EPR9724(B)] (ab169544)

**Please note:** All products are "FOR RESEARCH USE ONLY. NOT FOR USE IN DIAGNOSTIC PROCEDURES"

**Our Abpromise to you: Quality guaranteed and expert technical support**

- Replacement or refund for products not performing as stated on the datasheet
- Valid for 12 months from date of delivery
- Response to your inquiry within 24 hours
- We provide support in Chinese, English, French, German, Japanese and Spanish
- Extensive multi-media technical resources to help you
- We investigate all quality concerns to ensure our products perform to the highest standards

If the product does not perform as described on this datasheet, we will offer a refund or replacement. For full details of the Abpromise, please visit <https://www.abcam.cn/abpromise> or contact our technical team.

### **Terms and conditions**

---

- Guarantee only valid for products bought direct from Abcam or one of our authorized distributors