


Anti-ALDH1L1 antibody - Astrocyte Marker ab190298

★★★★★ [1 Abreviews](#) [14 References](#) [2 图像](#)

概述

产品名称	Anti-ALDH1L1抗体- Astrocyte Marker
描述	兔多克隆抗体to ALDH1L1 - Astrocyte Marker
宿主	Rabbit
经测试应用	适用于: WB, ICC/IF
种属反应性	与反应: Rat, Human 预测可用于: Orangutan 
免疫原	Recombinant full length protein corresponding to Human ALDH1L1 aa 1 to the C-terminus. Immunogen expressed and purified from E. coli. Database link: O75891

 [Run BLAST with](#)

 [Run BLAST with](#)

常规说明

The Life Science industry has been in the grips of a reproducibility crisis for a number of years. Abcam is leading the way in addressing this with our range of recombinant monoclonal antibodies and knockout edited cell lines for gold-standard validation. Please check that this product meets your needs before purchasing.

If you have any questions, special requirements or concerns, please send us an inquiry and/or contact our Support team ahead of purchase. Recommended alternatives for this product can be found below, along with publications, customer reviews and Q&As

性能

形式	Liquid
存放说明	Shipped at 4°C. Store at +4°C short term (1-2 weeks). Upon delivery aliquot. Store at -20°C long term. Avoid freeze / thaw cycle.
存储溶液	Preservative: 0.03% Sodium azide
纯度	Whole antiserum
克隆	多克隆
同种型	IgG

应用

The Abpromise guarantee

Abpromise™ 承诺保证使用 ab190298 于以下的经测试应用

“应用说明”部分下显示的仅为推荐的起始稀释度；实际最佳的稀释度/浓度应由使用者检定。

应用	Ab评论	说明
WB	★★★★★ (1)	1/5000 - 1/10000. Predicted molecular weight: 99 kDa.
ICC/IF		1/2000.

靶标

组织特异性

Highly expressed in liver, pancreas and kidney.

序列相似性

In the N-terminal section; belongs to the GART family.

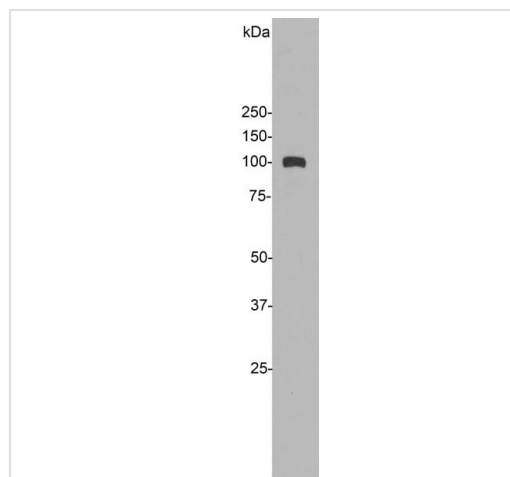
In the C-terminal section; belongs to the aldehyde dehydrogenase family. ALDH1L subfamily.

Contains 1 acyl carrier domain.

细胞定位

Cytoplasm.

图片

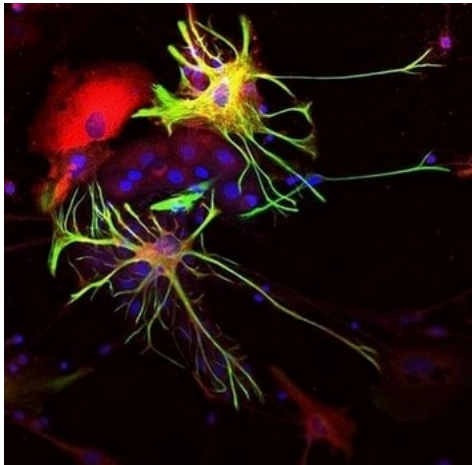


Anti-ALDH1L1 antibody - Astrocyte Marker (ab190298) at 1/5000 dilution + Rat liver tissue homogenate

Predicted band size: 99 kDa

Observed band size: ~100 kDa

Western blot - Anti-ALDH1L1 antibody - Astrocyte Marker (ab190298)



Immunocytochemistry/ Immunofluorescence - Anti-ALDH1L1 antibody - Astrocyte Marker (ab190298)

Immunofluorescent analysis of human neuron-glia cell mixture cultures labeling ALDH1L1 with ab190298 at 1/2000 (red) and a monoclonal antibody against GFAP (green). Blue is a DNA stain. Astrocytes labeled by ab190298 and anti-GFAP appear yellow.

Please note: All products are "FOR RESEARCH USE ONLY. NOT FOR USE IN DIAGNOSTIC PROCEDURES"

Our Abpromise to you: Quality guaranteed and expert technical support

- Replacement or refund for products not performing as stated on the datasheet
- Valid for 12 months from date of delivery
- Response to your inquiry within 24 hours

- We provide support in Chinese, English, French, German, Japanese and Spanish
- Extensive multi-media technical resources to help you
- We investigate all quality concerns to ensure our products perform to the highest standards

If the product does not perform as described on this datasheet, we will offer a refund or replacement. For full details of the Abpromise, please visit <https://www.abcam.cn/abpromise> or contact our technical team.

Terms and conditions

- Guarantee only valid for products bought direct from Abcam or one of our authorized distributors