

Anti-Albumin antibody [EPR20195] ab207327

重组 RabMAb

1 Abreviews **62** References **8** 图像

概述

产品名称	Anti-Albumin抗体[EPR20195]
描述	兔单克隆抗体[EPR20195] to Albumin
宿主	Rabbit
经测试应用	适用于: Flow Cyt (Intra), WB, IP, ICC/IF
种属反应性	与反应: Mouse, Rat, Human
免疫原	Full length native protein (purified) corresponding to Human Albumin aa 1 to the C-terminus. (Purified Proteins from Normal Serum). Database link: P02768
阳性对照	WB: Human, mouse and rat liver and plasma lysates. Human serum lysates. Human fetal kidney and spleen lysates. Mouse and rat spleen and kidney lysates. HepG2, NIH/3T3 and PC-12 whole cell lysates. ICC/IF: HepG2 cells. Flow Cyt (intra): HepG2 cells. IP: HepG2 whole cell lysate.
常规说明	This product is a recombinant monoclonal antibody, which offers several advantages including: <ul style="list-style-type: none"> - High batch-to-batch consistency and reproducibility - Improved sensitivity and specificity - Long-term security of supply - Animal-free production For more information see here . Our RabMAb [®] technology is a patented hybridoma-based technology for making rabbit monoclonal antibodies. For details on our patents, please refer to RabMAb[®] patents .

性能

形式	Liquid
存放说明	Shipped at 4°C. Store at +4°C short term (1-2 weeks). Upon delivery aliquot. Store at -20°C long term. Avoid freeze / thaw cycle.
存储溶液	pH: 7.2 Preservative: 0.01% Sodium azide Constituents: 59% PBS, 40% Glycerol, 0.05% BSA
纯度	Protein A purified
克隆	单克隆

克隆编号	EPR20195
同种型	IgG

应用

The Abpromise guarantee **Abpromise™**承诺保证使用ab207327于以下的经测试应用

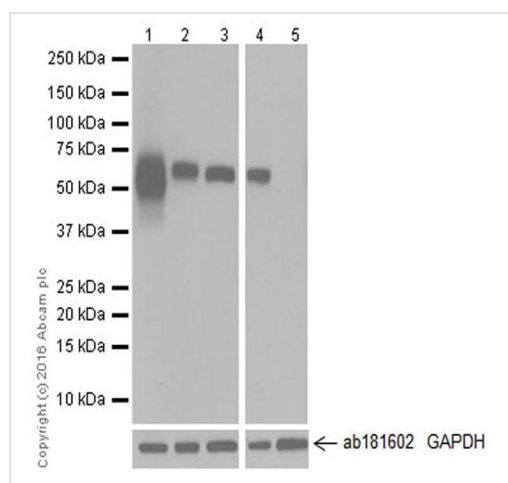
“应用说明”部分 下显示的仅为推荐的起始稀释度;实际最佳的稀释度/浓度应由使用者检定。

应用	Ab评论	说明
Flow Cyt (Intra)		1/500. Permeabilization is required.
WB		1/2000. Detects a band of approximately 69 kDa (predicted molecular weight: 69 kDa).
IP		1/40.
ICC/IF		1/500.

靶标

功能	Serum albumin, the main protein of plasma, has a good binding capacity for water, Ca(2+), Na(+), K(+), fatty acids, hormones, bilirubin and drugs. Its main function is the regulation of the colloidal osmotic pressure of blood. Major zinc transporter in plasma, typically binds about 80% of all plasma zinc.
组织特异性	Plasma.
疾病相关	Defects in ALB are a cause of familial dysalbuminemic hyperthyroxinemia (FDH) [MIM:103600]. FDH is a form of euthyroid hyperthyroxinemia that is due to increased affinity of ALB for T(4). It is the most common cause of inherited euthyroid hyperthyroxinemia in Caucasian population.
序列相似性	Belongs to the ALB/AFP/VDB family. Contains 3 albumin domains.
翻译后修饰	Kenitra variant is partially O-glycosylated at Thr-620. It has two new disulfide bonds Cys-600 to Cys-602 and Cys-601 to Cys-606. Glycated in diabetic patients. Phosphorylation sites are present in the extracellular medium. Acetylated on Lys-223 by acetylsalicylic acid.
细胞定位	Secreted.
形式	There are 2 isoforms produced by alternative splicing.

图片



Western blot - Anti-Albumin antibody [EPR20195]
(ab207327)

All lanes : Anti-Albumin antibody [EPR20195] (ab207327) at 1/2000 dilution

Lane 1 : Human liver lysate at 20 µg

Lane 2 : Mouse liver lysate at 20 µg

Lane 3 : Rat liver lysate at 20 µg

Lane 4 : HepG2 (Human liver hepatocellular carcinoma cell line) whole cell lysate at 20 µg

Lane 5 : HeLa (Human epithelial cell line from cervix adenocarcinoma) whole cell lysate at 10 µg

Secondary

All lanes : Goat Anti-Rabbit IgG H&L (HRP) ([ab97051](#)) at 1/100000 dilution

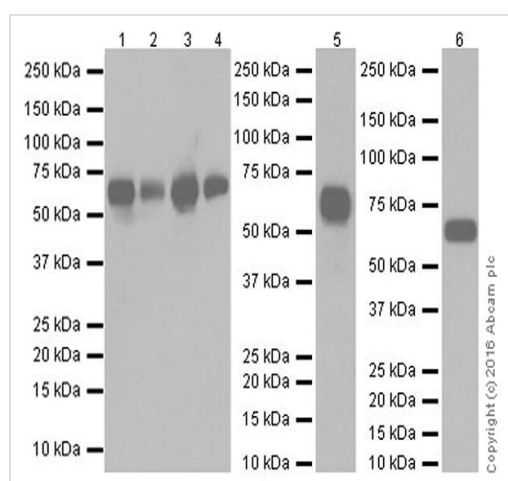
Predicted band size: 69 kDa

Observed band size: 69 kDa

Blocking/Dilution buffer: 5% NFDM/TBST.

Exposure time: Lane 1-3: 5 seconds; Lane 4/5: 1 second.

Negative control: HeLa (PMID: 10476216 and 8314088).



Western blot - Anti-Albumin antibody [EPR20195]
(ab207327)

Lanes 1-4 : Anti-Albumin antibody [EPR20195] (ab207327) at 1/10000 dilution

Lanes 5-6 : Anti-Albumin antibody [EPR20195] (ab207327) at 1/2000 dilution

Lane 1 : Human plasma at 2 µg

Lane 2 : Rat plasma at 2 µg

Lane 3 : Mouse plasma at 2 µg

Lane 4 : Human serum at 2 µg

Lane 5 : Human fetal kidney lysate at 10 µg

Lane 6 : Human fetal spleen lysate at 10 µg

Secondary

Lanes 1-4 : Goat Anti-Rabbit IgG H&L (HRP) ([ab97051](#)) at 1/100000 dilution

Lanes 5-6 : Goat Anti-Rabbit IgG Peroxidase Conjugate, specific

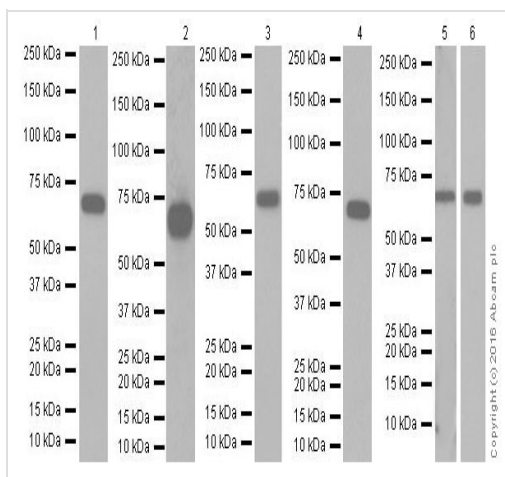
to the non-reduced form of IgG at 1/10000 dilution

Predicted band size: 69 kDa

Observed band size: 69 kDa

Exposure time: 1 second

Blocking/Dilution buffer: 5% NFDM/TBST.



Western blot - Anti-Albumin antibody [EPR20195]
(ab207327)

All lanes : Anti-Albumin antibody [EPR20195] (ab207327) at 1/2000 dilution

Lane 1 : Mouse spleen lysate

Lane 2 : Mouse kidney lysate

Lane 3 : Rat spleen lysate

Lane 4 : Rat kidney lysate

Lane 5 : NIH/3T3 (Mouse embryonic fibroblast cell line) whole cell lysate

Lane 6 : PC-12 (Rat adrenal gland pheochromocytoma cell line) whole cell lysate

Lysates/proteins at 10 µg per lane.

Secondary

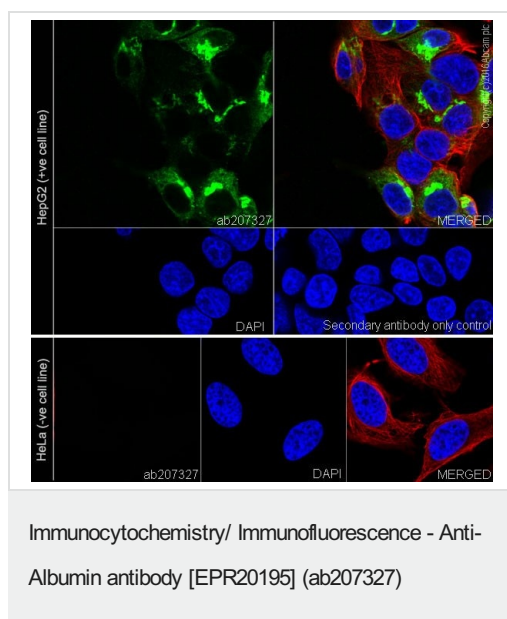
All lanes : Goat Anti-Rabbit IgG H&L (HRP) (**ab97051**) at 1/100000 dilution

Predicted band size: 69 kDa

Observed band size: 69 kDa

Blocking/Dilution buffer: 5% NFDM/TBST.

Exposure time: Lane 1-4: 1 second; Lane 5: 3 minutes; Lane 6: 5 seconds.



Immunofluorescent analysis of 4% paraformaldehyde-fixed, 0.1% Triton X-100 permeabilized HepG2 (Human liver hepatocellular carcinoma cell line) or HeLa (Human epithelial cell line from cervix adenocarcinoma) cells labeling Albumin with ab207327 at 1/500 dilution, followed by Goat anti-rabbit IgG (Alexa Fluor® 488) (**ab150077**) secondary antibody at 1/1000 dilution (green).

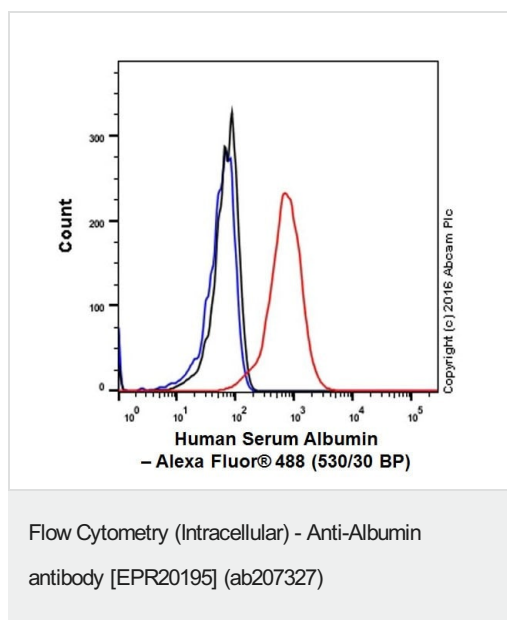
Confocal image showing cytoplasmic staining on HepG2 cell line.

Negative control: HeLa (PMID: 10476216 and 8314088)).

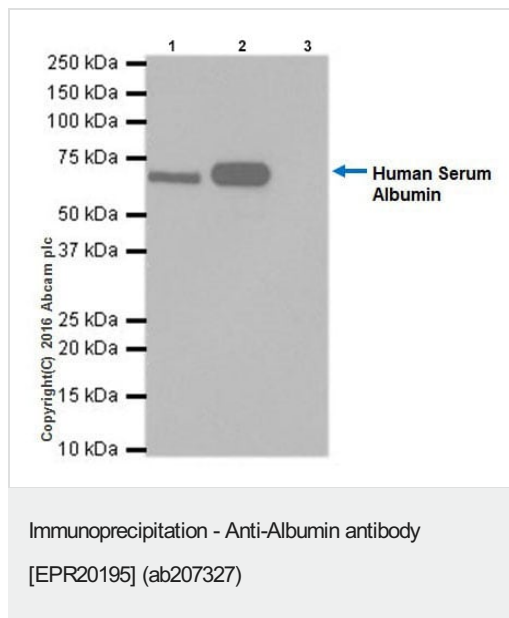
The nuclear counterstain is DAPI (blue).

Tubulin is detected with **ab195889** (Anti-alpha Tubulin antibody [DM1A] - Microtubule Marker (Alexa Fluor® 594)) at 1/200 dilution (red).

Secondary antibody only control: Used PBS instead of primary antibody, secondary antibody is Goat anti-rabbit IgG (Alexa Fluor® 488) (**ab150077**) at 1/1000 dilution.



Intracellular flow cytometric analysis of 4% paraformaldehyde-fixed permeabilized HepG2 (Human liver hepatocellular carcinoma cell line) cells labeling Albumin with ab207327 at 1/500 dilution (red) compared with a rabbit monoclonal IgG isotype control (**ab172730**; black) and an unlabelled control (cells without incubation with primary antibody and secondary antibody; blue). Goat anti rabbit IgG (Alexa Fluor® 488) at 1/2000 dilution was used as the secondary antibody.



Albumin was immunoprecipitated from 0.35 mg of HepG2 (Human liver hepatocellular carcinoma cell line) whole cell lysate with ab207327 at 1/40 dilution.

Western blot was performed from the immunoprecipitate using ab207327 at 1/1000 dilution.

VeriBlot for IP Detection Reagent (HRP) ([ab131366](#)), was used for detection at 1/10000 dilution.

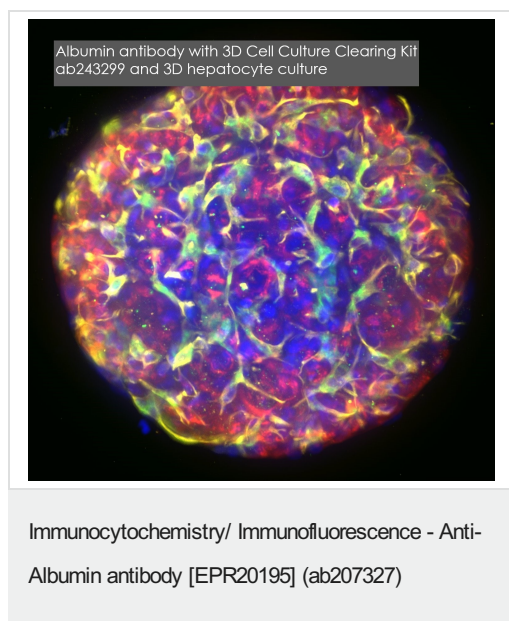
Lane 1: HepG2 whole cell lysate, 10 µg (Input).

Lane 2: ab207327 IP in HepG2 whole cell lysate.

Lane 3: Rabbit monoclonal IgG ([ab172730](#)) instead of ab207327 in HepG2 whole cell lysate.

Blocking and dilution buffer and concentration: 5% NFDM/TBST.

Exposure time: 30 seconds.



Albumin antibody ab207327 was used with 3D Cell Culture Clearing Kit [ab243299](#) to penetrate, stain and clear a 3D hepatocyte cell culture.

Blue: DAPI, Green: CD68, Yellow: Albumin, Red: Vimentin

Learn more about **3D cell culture and tissue clearing kits, reagents, and protocols** designed to make it easier to stain 3D cell cultures and thick tissue sections and get more data from each valuable tissue section.

Why choose a recombinant antibody?



Research with confidence
Consistent and reproducible results



Long-term and scalable supply
Recombinant technology



Success from the first experiment
Confirmed specificity



Ethical standards compliant
Animal-free production

Anti-Albumin antibody [EPR20195] (ab207327)

Please note: All products are "FOR RESEARCH USE ONLY. NOT FOR USE IN DIAGNOSTIC PROCEDURES"

Our Abpromise to you: Quality guaranteed and expert technical support

- Replacement or refund for products not performing as stated on the datasheet
- Valid for 12 months from date of delivery
- Response to your inquiry within 24 hours
- We provide support in Chinese, English, French, German, Japanese and Spanish
- Extensive multi-media technical resources to help you
- We investigate all quality concerns to ensure our products perform to the highest standards

If the product does not perform as described on this datasheet, we will offer a refund or replacement. For full details of the Abpromise, please visit <https://www.abcam.cn/abpromise> or contact our technical team.

Terms and conditions

- Guarantee only valid for products bought direct from Abcam or one of our authorized distributors