

Anti-AIF antibody [7F7AB10] ab110327

★★★★★ [1 Abreviews](#) [6 References](#) [4 图像](#)

概述

产品名称	Anti-AIF 抗体[7F7AB10]
描述	小鼠单克隆抗体[7F7AB10] to AIF
宿主	Mouse
经测试应用	适用于: IHC-P, Flow Cyt, WB, ICC/IF
种属反应性	与反应: Human
免疫原	Tissue, cells or virus. This information is considered to be commercially sensitive.
阳性对照	Isolated mitochondria from Human heart; HeLa and HL60 cells. FFPE human heart tissue sections.
常规说明	<p>This antibody clone is manufactured by Abcam. If you require a custom buffer formulation or conjugation for your experiments, please contact orders@abcam.com.</p> <p>The Life Science industry has been in the grips of a reproducibility crisis for a number of years. Abcam is leading the way in addressing this with our range of recombinant monoclonal antibodies and knockout edited cell lines for gold-standard validation. Please check that this product meets your needs before purchasing.</p> <p>If you have any questions, special requirements or concerns, please send us an inquiry and/or contact our Support team ahead of purchase. Recommended alternatives for this product can be found below, along with publications, customer reviews and Q&As</p> <p>Product was previously marketed under the MitoSciences sub-brand.</p>

性能

形式	Liquid
存放说明	Shipped at 4°C. Store at +4°C. Do Not Freeze.
存储溶液	<p>pH: 7.5</p> <p>Preservative: 0.02% Sodium azide</p> <p>Constituent: HEPES buffered saline</p>
纯度	IgG fraction
纯化说明	ab110327 was produced in vitro using hybridomas grown in serum-free medium, and then purified by biochemical fractionation.
克隆	单克隆

克隆编号	7F7AB10
同种型	IgG1
轻链类型	kappa

应用

The Abpromise guarantee

Abpromise™承诺保证使用ab110327于以下的经测试应用

“应用说明”部分 下显示的仅为推荐的起始稀释度;实际最佳的稀释度/浓度应由使用者检定。

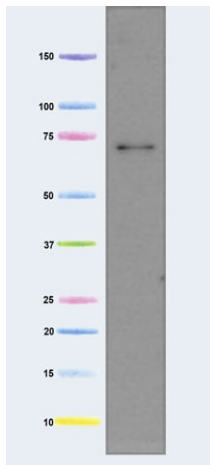
应用	Ab评论	说明
IHC-P		Use a concentration of 10 µg/ml. Perform heat mediated antigen retrieval before commencing with IHC staining protocol.
Flow Cyt		Use a concentration of 1 µg/ml. ab170190 - Mouse monoclonal IgG1, is suitable for use as an isotype control with this antibody.
WB	★★★★★ (1)	Use a concentration of 2 - 5 µg/ml. Predicted molecular weight: 67 kDa.
ICC/IF		Use a concentration of 5 - 10 µg/ml. For 2 hours.Paraformaldehyde fixed (4%, 20 minutes) and Triton X-100 permeabilized (0.1%, 15 minutes).

靶标

功能	Probable oxidoreductase that has a dual role in controlling cellular life and death; during apoptosis, it is translocated from the mitochondria to the nucleus to function as a proapoptotic factor in a caspase-independent pathway, while in normal mitochondria, it functions as an antiapoptotic factor via its oxidoreductase activity. The soluble form (AIFsol) found in the nucleus induces 'parthanatos' i.e., caspase-independent fragmentation of chromosomal DNA. Interacts with EIF3G,and thereby inhibits the EIF3 machinery and protein synthesis, and activates casapse-7 to amplify apoptosis. Plays a critical role in caspase-independent, pyknotic cell death in hydrogen peroxide-exposed cells. Binds to DNA in a sequence-independent manner.
疾病相关	Defects in AIFM1 are the cause of combined oxidative phosphorylation deficiency type 6 (COXPD6) [MIM:300816]. It is a mitochondrial disease resulting in a neurodegenerative disorder characterized by psychomotor delay, hypotonia, areflexia, muscle weakness and wasting.
序列相似性	Belongs to the FAD-dependent oxidoreductase family.
翻译后修饰	Under normal conditions, a 54-residue N-terminal segment is first proteolytically removed during or just after translocation into the mitochondrial intermembrane space (IMS) by the mitochondrial processing peptidase (MPP) to form the inner-membrane-anchored mature form (AIFmit). During apoptosis, it is further proteolytically processed at amino-acid position 101 leading to the generation of the mature form, which is confined to the mitochondrial IMS in a soluble form (AIFsol). AIFsol is released to the cytoplasm in response to specific death signals, and translocated to the nucleus, where it induces nuclear apoptosis in a caspase-independent manner.
细胞定位	Mitochondrion intermembrane space. Mitochondrion inner membrane. Cytoplasm. Nucleus.

Cytoplasm > perinuclear region. Proteolytic cleavage during or just after translocation into the mitochondrial intermembrane space (IMS) results in the formation of an inner-membrane-anchored mature form (AIFmit). During apoptosis, further proteolytic processing leads to a mature form, which is confined to the mitochondrial IMS in a soluble form (AIFsol). AIFsol is released to the cytoplasm in response to specific death signals, and translocated to the nucleus, where it induces nuclear apoptosis. Colocalizes with EIF3G in the nucleus and perinuclear region.

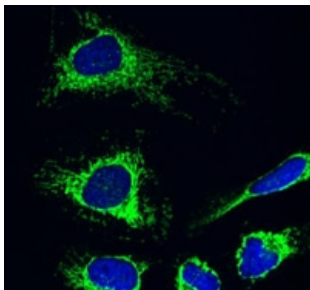
图片



Western blot - Anti-AIF antibody [7F7AB10]
(ab110327)

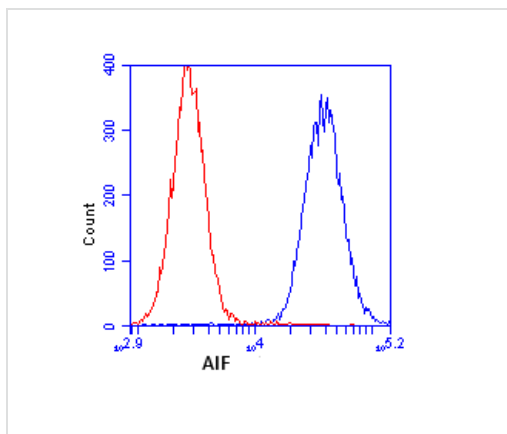
Anti-AIF antibody [7F7AB10] (ab110327) at 5 µg/ml + Isolated mitochondria from Human heart at 5 µg

Predicted band size: 67 kDa



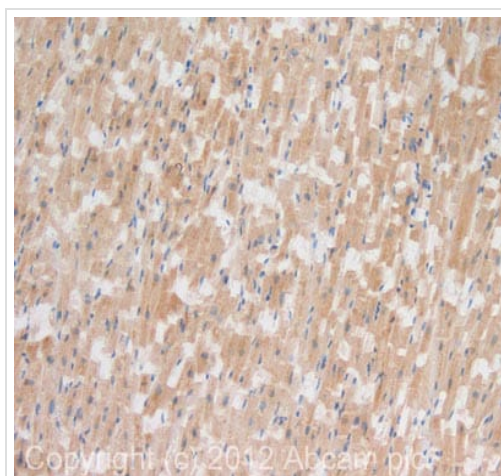
Immunocytochemistry/ Immunofluorescence - Anti-AIF antibody [7F7AB10] (ab110327)

Immunocytochemistry analysis using ab110327 at 5µg/ml staining AIF in HeLa cells (4% paraformaldehyde fixed and Triton X-100 permeabilized). The secondary antibody was (green) Alexa Fluor® 488 goat anti-mouse IgG (H+L) used at a 1/1000 dilution for 1 hour. DAPI was used to stain the cell nuclei (blue). Target protein locates mainly in mitochondria.



Flow Cytometry - Anti-AIF antibody [7F7AB10]
(ab110327)

Flow cytometric analysis using ab110327 at 1µg/ml staining AIF in HL60 cells (blue). Isotype control antibody (red).



Immunohistochemistry (Formalin/PFA-fixed paraffin-embedded sections) - Anti-AIF antibody [7F7AB10]
(ab110327)

IHC image of AIF staining in human heart formalin fixed paraffin embedded tissue section, performed on a Leica BondTM system using the standard protocol F. The section was pre-treated using heat mediated antigen retrieval with sodium citrate buffer (pH6, epitope retrieval solution 1) for 20 mins. The section was then incubated with ab110327, 10µg/ml, for 15 mins at room temperature and detected using an HRP conjugated compact polymer system. DAB was used as the chromogen. The section was then counterstained with haematoxylin and mounted with DPX.

For other IHC staining systems (automated and non-automated) customers should optimize variable parameters such as antigen retrieval conditions, primary antibody concentration and antibody incubation times.

Please note: All products are "FOR RESEARCH USE ONLY. NOT FOR USE IN DIAGNOSTIC PROCEDURES"

Our Abpromise to you: Quality guaranteed and expert technical support

- Replacement or refund for products not performing as stated on the datasheet
- Valid for 12 months from date of delivery
- Response to your inquiry within 24 hours
- We provide support in Chinese, English, French, German, Japanese and Spanish
- Extensive multi-media technical resources to help you
- We investigate all quality concerns to ensure our products perform to the highest standards

If the product does not perform as described on this datasheet, we will offer a refund or replacement. For full details of the Abpromise, please visit <https://www.abcam.cn/abpromise> or contact our technical team.

Terms and conditions

- Guarantee only valid for products bought direct from Abcam or one of our authorized distributors