

### Anti-AHA1 antibody [25F2.D9] ab91259

★☆☆☆☆ **1 Abreviews** [4 图像](#)

#### 概述

产品名称	Anti-AHA1抗体[25F2.D9]
描述	大鼠单克隆抗体[25F2.D9] to AHA1
宿主	Rat
经测试应用	适用于: IHC-P, ICC, WB, IP
种属反应性	与反应: Mouse, Human
免疫原	Recombinant full length protein corresponding to Mouse AHA1. Database link: <a href="#">Q8BK64</a>
阳性对照	WB: Human cell line lysate. ICC: HeLa cells. IHC-P: Mouse back skin tissue. IP: HeLa cell lysate.
常规说明	<p>The Life Science industry has been in the grips of a reproducibility crisis for a number of years. Abcam is leading the way in addressing this with our range of recombinant monoclonal antibodies and knockout edited cell lines for gold-standard validation. Please check that this product meets your needs before purchasing.</p> <p>If you have any questions, special requirements or concerns, please send us an inquiry and/or contact our Support team ahead of purchase. Recommended alternatives for this product can be found below, along with publications, customer reviews and Q&amp;As</p>

#### 性能

形式	Liquid
存放说明	Shipped at 4°C. Upon delivery aliquot and store at -20°C. Avoid freeze / thaw cycles.
存储溶液	Constituents: 0.42% Potassium phosphate, 0.87% Sodium chloride
纯度	Protein G purified
克隆	单克隆
克隆编号	25F2.D9
同种型	IgG2a
轻链类型	kappa

#### 应用

The Abpromise guarantee      **Abpromise™** 承诺保证使用ab91259于以下的经测试应用

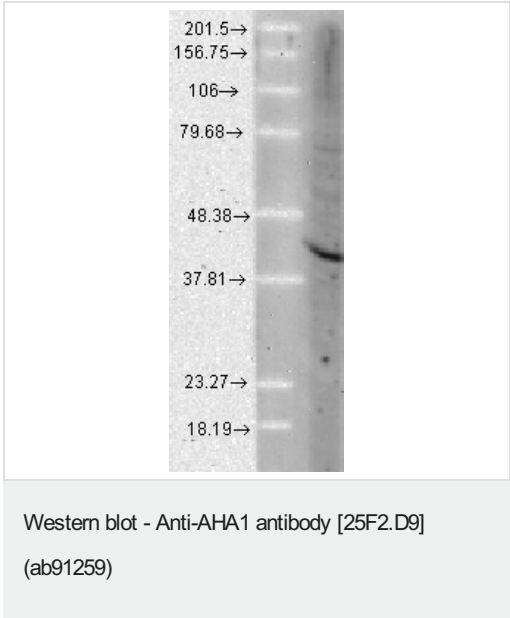
“应用说明”部分 下显示的仅为推荐的起始稀释度;实际最佳的稀释度/浓度应由使用者检定。

应用	Ab评论	说明
IHC-P		1/100.
ICC		1/1000.
WB	★★★★★ (1)	1/1000. Predicted molecular weight: 38 kDa.
IP		Use at an assay dependent concentration.

靶标

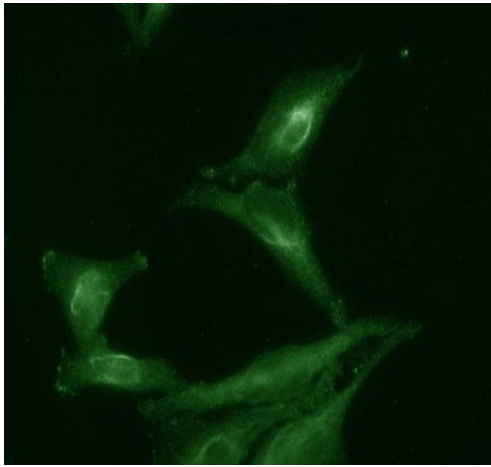
功能	Cochaperone that stimulates HSP90 ATPase activity (By similarity). May affect a step in the endoplasmic reticulum to Golgi trafficking.
组织特异性	Expressed in numerous tissues, including brain, heart, skeletal muscle and kidney and, at lower levels, liver and placenta.
序列相似性	Belongs to the AHA1 family.
细胞定位	Cytoplasm > cytosol. Endoplasmic reticulum. May transiently interact with the endoplasmic reticulum.

图片



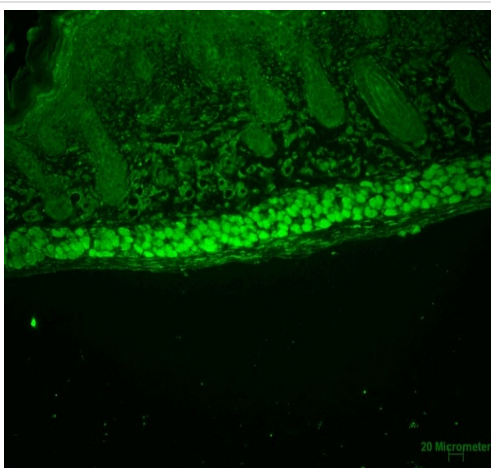
Anti-AHA1 antibody [25F2.D9] (ab91259) at 1/1000 dilution + Human cell line lysate

**Predicted band size:** 38 kDa



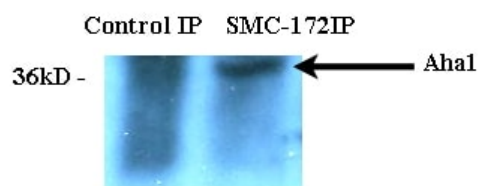
Immunocytochemistry - Anti-AHA1 antibody  
[25F2.D9] (ab91259)

Immunocytochemical analysis of ab91259 staining AHA1 in HeLa cells. Cells were fixed with 4% PFA for 20 minutes at room temperature. Samples were incubated with primary antibody (1/100) for 1 hour at room temperature. A Fluorescein-conjugated goat anti-rat IgG secondary antibody was used.



Immunohistochemistry (Formalin/PFA-fixed paraffin-embedded sections) - Anti-AHA1 antibody [25F2.D9]  
(ab91259)

Paraffin-embedded mouse back skin tissue stained for AHA1 using ab91259 at 1/100 dilution in immunohistochemical analysis. Secondary antibody is FITC Goat Anti-Rat.



Immunoprecipitation - Anti-AHA1 antibody [25F2.D9]  
(ab91259)

ab91259 used in the Immunoprecipitation of AHA1 from Human Hela cells. The antibody was used at 20µl per 1 ml of cell lysate (50mM Tris (pH 7.2); 150mM NaCl; 1mM MgCl<sub>2</sub>; 1% TX-100; protease inhibitors); captured on 20µl of protein G beads .

**Please note:** All products are "FOR RESEARCH USE ONLY. NOT FOR USE IN DIAGNOSTIC PROCEDURES"

### **Our Abpromise to you: Quality guaranteed and expert technical support**

---

- Replacement or refund for products not performing as stated on the datasheet
- Valid for 12 months from date of delivery
- Response to your inquiry within 24 hours
- We provide support in Chinese, English, French, German, Japanese and Spanish
- Extensive multi-media technical resources to help you
- We investigate all quality concerns to ensure our products perform to the highest standards

If the product does not perform as described on this datasheet, we will offer a refund or replacement. For full details of the Abpromise, please visit <https://www.abcam.cn/abpromise> or contact our technical team.

### **Terms and conditions**

---

- Guarantee only valid for products bought direct from Abcam or one of our authorized distributors