

### Anti-AE2 antibody ab42687

★★★★☆ [2 Abreviews](#) [8 References](#) [1 图像](#)

#### 概述

##### 产品名称

Anti-AE2抗体

##### 描述

兔多克隆抗体to AE2

① 该产品是 **快线抗体**，通过亲和纯化得到。对抗原肽有高灵敏度及特异性(ELISA测试)。

[Read the terms of use »](#)

##### 宿主

Rabbit

##### 种属反应性

与反应: Human

预测可用于: Mouse, Rat, Rabbit, Horse, Guinea pig, Cow, Orangutan 

##### 免疫原

Synthetic peptide corresponding to Human AE2 aa 200-300.  
(Peptide available as [ab42686](#))

##### 常规说明

The Life Science industry has been in the grips of a reproducibility crisis for a number of years. Abcam is leading the way in addressing this with our range of recombinant monoclonal antibodies and knockout edited cell lines for gold-standard validation. Please check that this product meets your needs before purchasing.

If you have any questions, special requirements or concerns, please send us an inquiry and/or contact our Support team ahead of purchase. Recommended alternatives for this product can be found below, along with publications, customer reviews and Q&As

#### 性能

##### 形式

Liquid

##### 存放说明

Shipped at 4°C. Store at +4°C short term (1-2 weeks). Upon delivery aliquot. Store at -20°C or -80°C. Avoid freeze / thaw cycle.

##### 存储溶液

pH: 7.40  
Preservative: 0.02% Sodium azide  
Constituent: PBS

Batches of this product that have a concentration < 1mg/ml may have BSA added as a stabilising agent. If you would like information about the formulation of a specific lot, please contact our scientific support team who will be happy to help.

##### 纯度

Immunogen affinity purified

克隆	多克隆
同种型	IgG

## 应用

Fast track antibodies constitute a diverse group of products that have been released to accelerate your research, but are not yet fully characterized. They have all been affinity purified and show high titre values against the immunizing peptide (by ELISA).

### Fast track terms of use

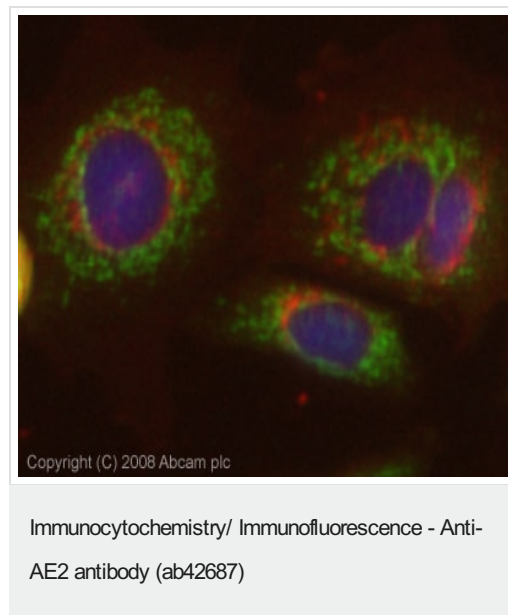
应用	Ab评论	说明
ICC/IF		Use at an assay dependent concentration.

## 靶标

功能	Plasma membrane anion exchange protein of wide distribution.
序列相似性	Belongs to the anion exchanger (TC 2.A.31) family.
细胞定位	Membrane.

## 图片

This Fast-Track antibody is not yet fully characterised. These images represent **inconclusive preliminary data**.



ICC/IF image of ab42687 stained MCF7 cells. The cells were 100% methanol fixed (5 min), permabilised in 0.1% PBS-Tween (20 min) and incubated with the antibody (ab42687, 5µg/ml) for 1h at room temperature. 1%BSA / 10% normal goat serum / 0.3M glycine was used to block non-specific protein-protein interactions. The secondary antibody (green) was Alexa Fluor® 488 goat anti-rabbit IgG (H+L) used at a 1/1000 dilution for 1h. Alexa Fluor® 594 WGA was used to label plasma membranes (red). DAPI was used to stain the cell nuclei (blue). This antibody also gave a positive IF result in Hek293 cells fixed in 100% methanol at 5ug/ml. However, this Fast-Track antibody is not yet fully characterised. This image represents inconclusive preliminary data.

**Please note:** All products are "FOR RESEARCH USE ONLY. NOT FOR USE IN DIAGNOSTIC PROCEDURES"

## Terms and conditions

- Guarantee only valid for products bought direct from Abcam or one of our authorized distributors