

Anti-ADRM1/ARM-1 antibody [EPR11449(B)] ab157185

敲除验证
重组
RabMAb

[3 References](#)
[9 图像](#)

概述

产品名称	Anti-ADRM1/ARM-1抗体[EPR11449(B)]
描述	兔单克隆抗体[EPR11449(B)] to ADRM1/ARM-1
宿主	Rabbit
特异性	The mouse and rat recommendation is based on the WB results. We do not guarantee IHC-P for mouse and rat.
经测试应用	适用于: WB, Flow Cyt, IHC-P, IP, ICC/IF
种属反应性	与反应: Human
免疫原	Synthetic peptide corresponding to Human ADRM1/ARM-1 aa 100-200.
阳性对照	WB: HEK293T, K562, HeLa and Raji cell lysates. IP: Raji cells.
常规说明	<p>This product is a recombinant monoclonal antibody, which offers several advantages including:</p> <ul style="list-style-type: none"> - High batch-to-batch consistency and reproducibility - Improved sensitivity and specificity - Long-term security of supply - Animal-free production <p>For more information see here.</p> <p>Our RabMAb[®] technology is a patented hybridoma-based technology for making rabbit monoclonal antibodies. For details on our patents, please refer to RabMAb[®] patents.</p> <p>Mouse, Rat: We have preliminary internal testing data to indicate this antibody may not react with these species. Please contact us for more information.</p>

性能

形式	Liquid
存放说明	Shipped at 4°C. Store at -20°C.
存储溶液	<p>pH: 7.2</p> <p>Preservative: 0.01% Sodium azide</p> <p>Constituents: 9% PBS, 40% Glycerol (glycerin, glycerine), 0.05% BSA, 50% Tissue culture supernatant</p>
纯度	Tissue culture supernatant

克隆 单克隆
克隆编号 EPR11449(B)
同种型 IgG

应用

The Abpromise guarantee **Abpromise™**承诺保证使用ab157185于以下的经测试应用

“应用说明”部分 下显示的仅为推荐的起始稀释度;实际最佳的稀释度/浓度应由使用者检定。

应用	Ab评论	说明
WB		1/10000 - 1/50000. Predicted molecular weight: 42 kDa.
Flow Cyt		1/60.
IHC-P		1/50 - 1/100. Perform heat mediated antigen retrieval with citrate buffer pH 6 before commencing with IHC staining protocol. The mouse and rat recommendation is based on the WB results. We do not guarantee IHC-P for mouse and rat.
IP		1/10 - 1/100.
ICC/IF		1/1000.

靶标

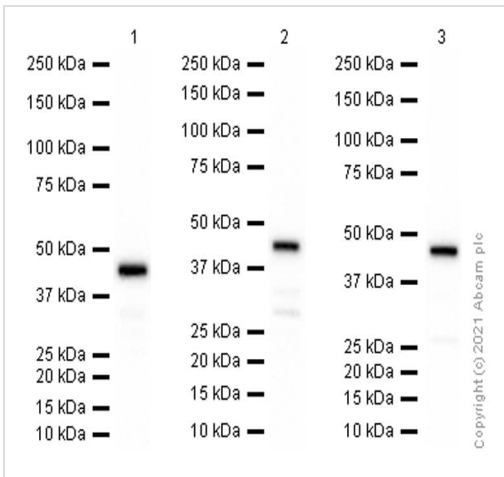
功能 Functions as a proteasomal ubiquitin receptor. Recruits the deubiquitinating enzyme UCHL5 at the 26S proteasome and promotes its activity.

序列相似性 Belongs to the ADRM1 family.
Contains 1 PH domain.

结构域 The PH domain mediates interactions with PSMD1 and ubiquitin. Preferential binding to the proximal subunit of K48-linked diubiquitin allows UCHL5 access to the distal subunit.

细胞定位 Cytoplasm. Nucleus.

图片



Western blot - Anti-ADRM1/ARM-1 antibody [EPR11449(B)] (ab157185)

All lanes : Anti-ADRM1/ARM-1 antibody [EPR11449(B)] (ab157185) at 1/10000 dilution (Purified)

Lane 1 : Ramos (Human Burkitt's lymphoma B lymphocyte) whole cell lysate

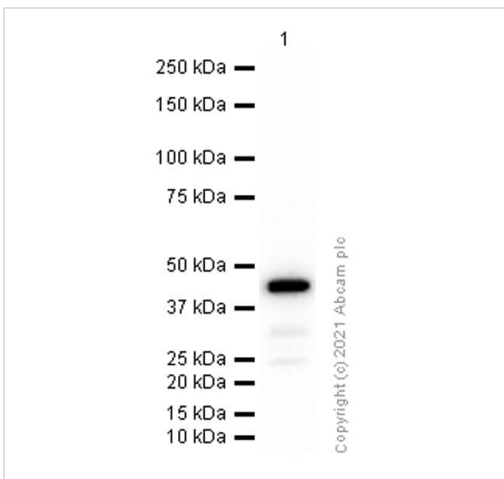
Lane 2 : HeLa (Human cervix adenocarcinoma epithelial cell) whole cell lysate

Lane 3 : K-562 (Human chronic myelogenous leukemia lymphoblast) whole cell lysate

Secondary

All lanes : Goat Anti-Rabbit IgG H&L (HRP) ([ab97051](#)) at 1/20000 dilution

Predicted band size: 42 kDa



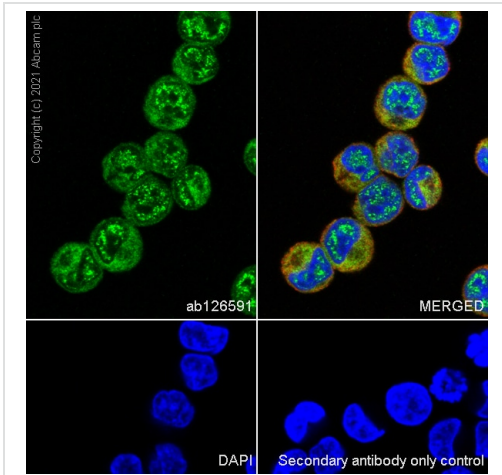
Western blot - Anti-ADRM1/ARM-1 antibody [EPR11449(B)] (ab157185)

Anti-ADRM1/ARM-1 antibody [EPR11449(B)] (ab157185) at 1/1000 dilution (Purified) + Raji (Human Burkitt's lymphoma B lymphocyte) whole cell lysate

Secondary

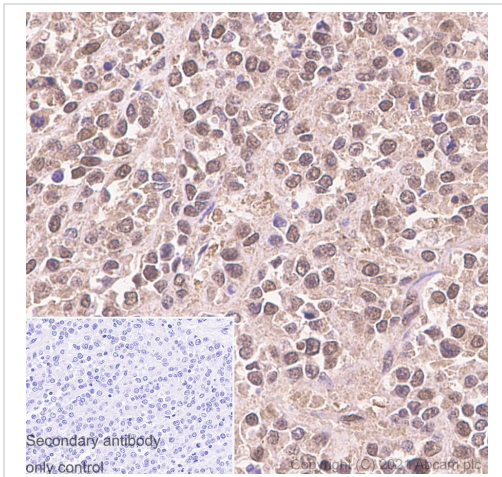
Goat Anti-Rabbit IgG H&L (HRP) ([ab97051](#)) at 1/20000 dilution

Predicted band size: 42 kDa



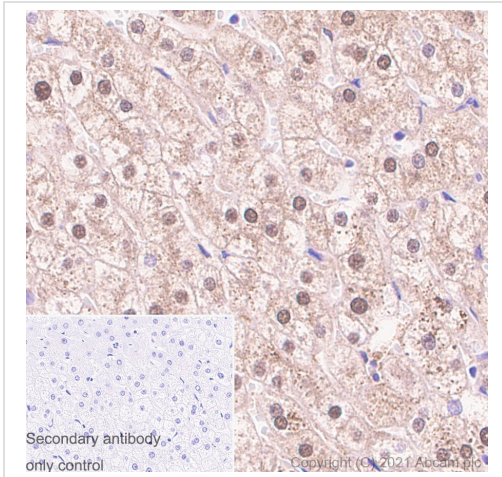
Immunocytochemistry/ Immunofluorescence - Anti-ADRM1/ARM-1 antibody [EPR11449(B)] (ab157185)

Immunocytochemistry analysis of K-562 (Human chronic myelogenous leukemia lymphoblast) cells labeling ADRM1/ARM-1 with Purified ab157185 at 1:1000 dilution (0.6 µg/ml). Cells were fixed in 100% Methanol and permeabilized with 0.1% tritonX-100. Cells were counterstained with Ab195889 Anti-alpha Tubulin antibody [DM1A]+H21:L21 - Microtubule Marker (Alexa Fluor® 594) 1:200 (2.5 µg/ml). Goat anti rabbit IgG (Alexa Fluor® 488, **ab150077**) was used as the secondary antibody at 1:1000 (2 µg/ml) dilution. DAPI (blue) was used as nuclear counterstain. PBS instead of the primary antibody was used as the secondary antibody only control.



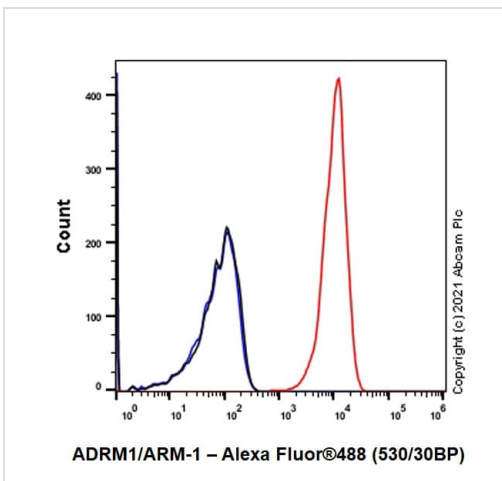
Immunohistochemistry (Formalin/PFA-fixed paraffin-embedded sections) - Anti-ADRM1/ARM-1 antibody [EPR11449(B)] (ab157185)

Immunohistochemistry (Formalin/PFA-fixed paraffin-embedded sections) analysis of human gastric cancer tissue sections labeling ADRM1/ARM-1 with Purified ab157185 at 1:9000 (0.07 µg/ml). Heat mediated antigen retrieval was performed using Heat mediated antigen retrieval using Bond™ Epitope Retrieval Solution 2 (pH 9.0) . Tissue was counterstained with Hematoxylin. Rabbit specific IHC polymer detection kit HRP/DAB (**ab209101**) secondary antibody was used at 1:0 dilution. PBS instead of the primary antibody was used as the negative control.



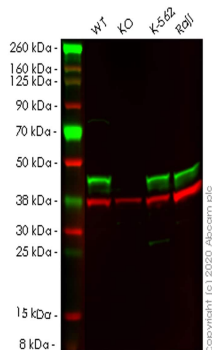
Immunohistochemistry (Formalin/PFA-fixed paraffin-embedded sections) analysis of human liver tissue sections labeling ADRM1/ARM-1 with Purified ab157185 at 1:9000 (0.07 µg/ml). Heat mediated antigen retrieval was performed using Heat mediated antigen retrieval using Bond™ Epitope Retrieval Solution 2 (pH 9.0) . Tissue was counterstained with Hematoxylin. Rabbit specific IHC polymer detection kit HRP/DAB (**ab209101**) secondary antibody was used at 1:0 dilution. PBS instead of the primary antibody was used as the negative control.

Immunohistochemistry (Formalin/PFA-fixed paraffin-embedded sections) - Anti-ADRM1/ARM-1 antibody [EPR11449(B)] (ab157185)



Flow Cytometry analysis of K-562 (Human chronic myelogenous leukemia lymphoblast) cells labelling ADRM1/ARM-1 with Purified ab157185 at 1:60 dilution (10 µg/ml) (Red). Cells were fixed with 4% Paraformaldehyde and permeabilised with 90% Methanol. A Goat anti rabbit IgG (Alexa Fluor® 488, **ab150081**) secondary antibody was used at 1:2000. Isotype control - Rabbit monoclonal IgG (Black). Unlabelled control - Cell without incubation with primary antibody and secondary antibody (Blue).

Flow Cytometry - Anti-ADRM1/ARM-1 antibody [EPR11449(B)] (ab157185)



Western blot - Anti-ADRM1/ARM-1 antibody [EPR11449(B)] (ab157185)

All lanes : Anti-ADRM1/ARM-1 antibody [EPR11449(B)] (ab157185) at 1/1000 dilution

Lane 1 : Wild-type HEK293T cell lysate

Lane 2 : ADRM1 knockout HEK293T cell lysate

Lane 3 : K-562 cell lysate

Lane 4 : Raji cell lysate

Lysates/proteins at 20 µg per lane.

Secondary

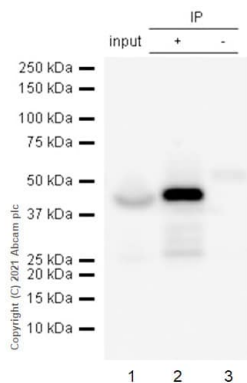
All lanes : Goat anti-Rabbit IgG H&L (IRDye® 800CW) preadsorbed (**ab216773**) at 1/10000 dilution

Predicted band size: 42 kDa

Observed band size: 42 kDa

Lanes 1-4: Merged signal (red and green). Green - ab157185 observed at 42 kDa. Red - loading control **ab8245** observed at 36 kDa.

ab157185 Anti-ADRM1/ARM-1 antibody [EPR11449(B)] was shown to specifically react with ADRM1/ARM-1 in wild-type HEK293T cells. Loss of signal was observed when knockout cell line **ab266765** (knockout cell lysate **ab257816**) was used. Wild-type and ADRM1/ARM-1 knockout samples were subjected to SDS-PAGE. ab157185 and Anti-GAPDH antibody [6C5] - Loading Control (**ab8245**) were incubated overnight at 4°C at 1 in 1000 dilution and 1 in 20000 dilution respectively. Blots were developed with Goat anti-Rabbit IgG H&L (IRDye® 800CW) preadsorbed (**ab216773**) and Goat anti-Mouse IgG H&L (IRDye® 680RD) preadsorbed (**ab216776**) secondary antibodies at 1 in 20000 dilution for 1 hour at room temperature before imaging.



Immunoprecipitation - Anti-ADRM1/ARM-1 antibody
[EPR11449(B)] (ab157185)

ADRM1/ARM-1 was immunoprecipitated from 0.35 mg Raji (Human Burkitt's lymphoma B lymphocyte) whole cell lysate 10 µg with 157185 at 1/100 dilution (2µg). VeriBlot for IP Detection Reagent (HRP)([ab131366](#)) was used at 1/5000 dilution.





Lane 1: Raji (Human Burkitt's lymphoma B lymphocyte) whole cell lysate 10 µg

Lane 2: ab157185 IP in Raji whole cell lysate

Lane 3: Rabbit monoclonal IgG ([ab172730](#)) instead of ab157185 in Raji whole cell lysate

Blocking and dilution buffer and concentration: 5% NFD/MBST.

Why choose a recombinant antibody?

 Research with confidence Consistent and reproducible results	 Long-term and scalable supply Recombinant technology
 Success from the first experiment Confirmed specificity	 Ethical standards compliant Animal-free production

Anti-ADRM1/ARM-1 antibody [EPR11449(B)]
(ab157185)

Please note: All products are "FOR RESEARCH USE ONLY. NOT FOR USE IN DIAGNOSTIC PROCEDURES"

Our Abpromise to you: Quality guaranteed and expert technical support

- Replacement or refund for products not performing as stated on the datasheet
- Valid for 12 months from date of delivery
- Response to your inquiry within 24 hours
- We provide support in Chinese, English, French, German, Japanese and Spanish

- Extensive multi-media technical resources to help you
- We investigate all quality concerns to ensure our products perform to the highest standards

If the product does not perform as described on this datasheet, we will offer a refund or replacement. For full details of the Abpromise, please visit <https://www.abcam.cn/abpromise> or contact our technical team.

Terms and conditions

- Guarantee only valid for products bought direct from Abcam or one of our authorized distributors