


Anti-Activin Receptor Type IIA/ACVR2A antibody [EPR7407] ab134082

重组 RabMAb

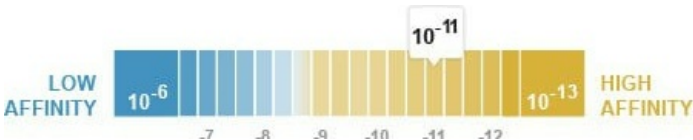
3 References 3 图像

概述

| | |
|-------|--|
| 产品名称 | Anti-Activin Receptor Type IIA/ACVR2A抗体[EPR7407] |
| 描述 | 兔单克隆抗体[EPR7407] to Activin Receptor Type IIA/ACVR2A |
| 宿主 | Rabbit |
| 经测试应用 | 适用于: WB 不适用于: Flow Cyt, ICC/IF, IHC-P or IP |
| 种属反应性 | 与反应: Human 预测可用于: Mouse, Rat  |
| 免疫原 | Synthetic peptide within Human Activin Receptor Type IIA/ACVR2A aa 1-100. The exact sequence is proprietary. (Peptide available as ab206674) |
| 阳性对照 | Human fetal liver, HepG2, HeLa, and K562 cell lysates. |
| 常规说明 | This product is a recombinant monoclonal antibody, which offers several advantages including: - High batch-to-batch consistency and reproducibility - Improved sensitivity and specificity - Long-term security of supply - Animal-free production For more information see here . Our RabMAb [®] technology is a patented hybridoma-based technology for making rabbit monoclonal antibodies. For details on our patents, please refer to RabMAb[®] patents . |

性能

| | |
|------------------------|--|
| 形式 | Liquid |
| 存放说明 | Shipped at 4°C. Store at -20°C. Stable for 12 months at -20°C. |
| 解离常数 (K _D) | K _D = 4.37 x 10 ⁻¹¹ M |



[Learn more about K_D](#)

| | |
|------|---|
| 存储溶液 | pH: 7.20 Preservative: 0.01% Sodium azide Constituents: 9% PBS, 40% Glycerol (glycerin, glycerine), 0.05% BSA, 50% Tissue culture supernatant |
| 纯度 | Protein A purified |
| 克隆 | 单克隆 |
| 克隆编号 | EPR7407 |
| 同种型 | IgG |

应用

The Abpromise guarantee **Abpromise™** 承诺保证使用ab134082于以下的经测试应用

“应用说明”部分 下显示的仅为推荐的起始稀释度;实际最佳的稀释度/浓度应由使用者检定。

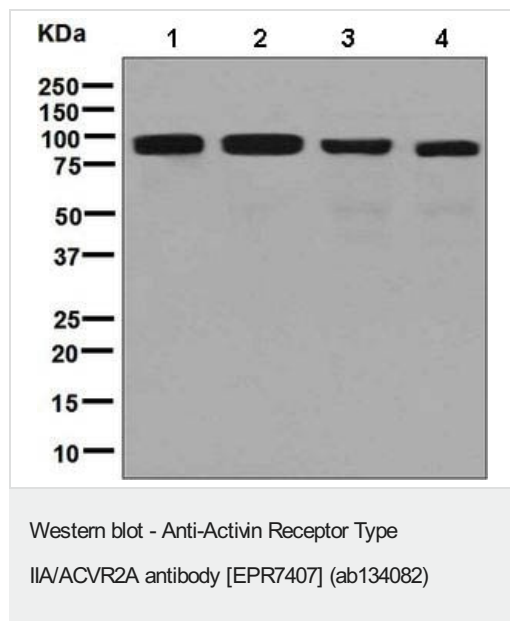
| 应用 | Ab评论 | 说明 |
|----|------|--|
| WB | | 1/1000 - 1/10000. Detects a band of approximately 80 kDa (predicted molecular weight: 58 kDa). |

应用说明 Is unsuitable for Flow Cyt, ICC/IF, IHC-P or IP.

靶标

| | |
|-------|--|
| 功能 | On ligand binding, forms a receptor complex consisting of two type II and two type I transmembrane serine/threonine kinases. Type II receptors phosphorylate and activate type I receptors which autophosphorylate, then bind and activate SMAD transcriptional regulators. Receptor for activin A, activin B and inhibin A. |
| 序列相似性 | Belongs to the protein kinase superfamily. TKL Ser/Thr protein kinase family. TGFB receptor subfamily. Contains 1 protein kinase domain. |
| 细胞定位 | Membrane. |

图片



All lanes : Anti-Activin Receptor Type IIA/ACVR2A antibody [EPR7407] (ab134082) at 1/1000 dilution

Lane 1 : Human fetal liver lysate

Lane 2 : HepG2 cell lysate

Lane 3 : HeLa cell lysate

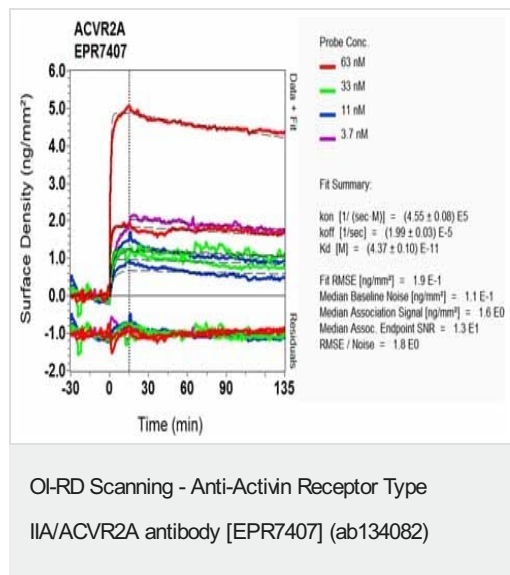
Lane 4 : K562 cell lysate

Lysates/proteins at 10 µg per lane.

Secondary

All lanes : HRP labelled Goat anti-rabbit at 1/2000 dilution

Predicted band size: 58 kDa



Equilibrium disassociation constant (K_D)

Learn more about K_D

[Click here to learn more about \$K_D\$](#)

Why choose a recombinant antibody?



Research with confidence
Consistent and reproducible results



Long-term and scalable supply
Recombinant technology



Success from the first experiment
Confirmed specificity



Ethical standards compliant
Animal-free production

Anti-Activin Receptor Type IIA/ACVR2A antibody
[EPR7407] (ab134082)

Please note: All products are "FOR RESEARCH USE ONLY. NOT FOR USE IN DIAGNOSTIC PROCEDURES"

Our Abpromise to you: Quality guaranteed and expert technical support

- Replacement or refund for products not performing as stated on the datasheet
- Valid for 12 months from date of delivery
- Response to your inquiry within 24 hours
- We provide support in Chinese, English, French, German, Japanese and Spanish
- Extensive multi-media technical resources to help you
- We investigate all quality concerns to ensure our products perform to the highest standards

If the product does not perform as described on this datasheet, we will offer a refund or replacement. For full details of the Abpromise, please visit <https://www.abcam.cn/abpromise> or contact our technical team.

Terms and conditions

- Guarantee only valid for products bought direct from Abcam or one of our authorized distributors