

### Anti-Actin antibody [AC-40] ab11003

★★★★★ [4 Abreviews](#) [49 References](#) [1 图像](#)

#### 概述

产品名称	Anti-Actin抗体[AC-40]
描述	小鼠单克隆抗体[AC-40] to Actin
宿主	Mouse
经测试应用	适用于: ELISA, IHC-P, IHC-Fr, ICC/IF, WB, IHC-FoFr, Dot blot
种属反应性	与反应: Mouse, Rat, Sheep, Rabbit, Goat, Chicken, Guinea pig, Hamster, Cow, Dog, Human, Pig, Xenopus laevis, Carp, Snail
免疫原	Synthetic peptide within Human Actin aa 365-375 (C terminal). The exact sequence is proprietary. Sequence: SGPSIVHRKCF

 [Run BLAST with](#)

 [Run BLAST with](#)

**表位** Monoclonal anti-Actin recognizes an epitope located on the C-terminal end of actin. This epitope is conserved in all actin isoforms.

**常规说明** Storage in frost-free freezers is not recommended. If slight turbidity occurs upon prolonged storage, clarify the solution by centrifugation before use.

This product was changed from ascites to tissue culture supernatant on 21 May 2019. Please note that the dilutions may need to be adjusted accordingly. If you have any questions, please do not hesitate to contact our scientific support team.

The Life Science industry has been in the grips of a reproducibility crisis for a number of years. Abcam is leading the way in addressing this with our range of recombinant monoclonal antibodies and knockout edited cell lines for gold-standard validation. Please check that this product meets your needs before purchasing.

If you have any questions, special requirements or concerns, please send us an inquiry and/or contact our Support team ahead of purchase. Recommended alternatives for this product can be found below, along with publications, customer reviews and Q&As

#### 性能

形式	Liquid
存放说明	Shipped at 4°C. Store at +4°C short term (1-2 weeks). Upon delivery aliquot. Store at -20°C. Avoid freeze / thaw cycle.
存储溶液	pH: 7.40

	Preservative: 0.097% Sodium azide
	Constituent: PBS
纯度	Tissue culture supernatant
纯化说明	Purified from TCS.
克隆	单克隆
克隆编号	AC-40
同种型	IgG2a

## 应用

**The Abpromise guarantee**      **Abpromise™** 承诺保证使用ab11003于以下的经测试应用

“应用说明”部分 下显示的仅为推荐的起始稀释度;实际最佳的稀释度/浓度应由使用者检定。

应用	Ab评论	说明
ELISA	★★★★★ (1)	Use at an assay dependent concentration.
IHC-P		Use at an assay dependent concentration.
IHC-Fr		Use at an assay dependent concentration.
ICC/IF	★★★★★ (1)	Use at an assay dependent concentration. 1/200 determined by indirect immunofluorescent staining of cultured Human or chicken fibroblasts.
WB	★★★★★ (2)	Use at an assay dependent concentration. Predicted molecular weight: 42 kDa. 1/500 using cultured Human or chicken fibroblast extract. Predicted molecular weight: 42 kDa.
IHC-FoFr		Use at an assay dependent concentration.
Dot blot		Use at an assay dependent concentration.

## 靶标

**功能**      Actins are highly conserved proteins that are involved in various types of cell motility and are ubiquitously expressed in all eukaryotic cells.

**疾病相关**      Defects in ACTA1 are the cause of nemaline myopathy type 3 (NEM3) [MIM:161800]. A form of nemaline myopathy. Nemaline myopathies are muscular disorders characterized by muscle weakness of varying severity and onset, and abnormal thread-or rod-like structures in muscle fibers on histologic examination. The phenotype at histological level is variable. Some patients present areas devoid of oxidative activity containing (cores) within myofibers. Core lesions are unstructured and poorly circumscribed.

Defects in ACTA1 are a cause of myopathy congenital with excess of thin myofilaments (MPCETM) [MIM:161800]. A congenital muscular disorder characterized at histological level by areas of sarcoplasm devoid of normal myofibrils and mitochondria, and replaced with dense masses of thin filaments. Central cores, rods, ragged red fibers, and necrosis are absent.

Defects in ACTA1 are a cause of congenital myopathy with fiber-type disproportion (CFTD) [MIM:255310]; also known as congenital fiber-type disproportion myopathy (CFTDM). CFTD is a genetically heterogeneous disorder in which there is relative hypotrophy of type 1 muscle fibers compared to type 2 fibers on skeletal muscle biopsy. However, these findings are not specific and can be found in many different myopathic and neuropathic conditions.

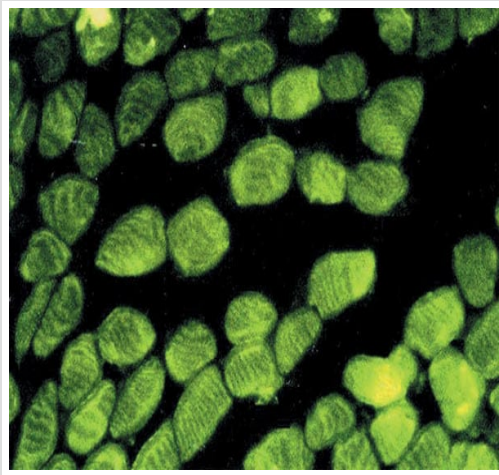
**序列相似性**

Belongs to the actin family.

**细胞定位**

Cytoplasm > cytoskeleton.

**图片**



Immunohistochemical analysis of frozen Human tongue tissue, using ab11003.

This image was generated using the ascites version of the product.

Immunohistochemistry (Frozen sections) - Anti-Actin antibody [AC-40] (ab11003)

**Please note:** All products are "FOR RESEARCH USE ONLY. NOT FOR USE IN DIAGNOSTIC PROCEDURES"

**Our Abpromise to you: Quality guaranteed and expert technical support**

- Replacement or refund for products not performing as stated on the datasheet
- Valid for 12 months from date of delivery
- Response to your inquiry within 24 hours
- We provide support in Chinese, English, French, German, Japanese and Spanish
- Extensive multi-media technical resources to help you
- We investigate all quality concerns to ensure our products perform to the highest standards

If the product does not perform as described on this datasheet, we will offer a refund or replacement. For full details of the Abpromise, please visit <https://www.abcam.cn/abpromise> or contact our technical team.

**Terms and conditions**

- Guarantee only valid for products bought direct from Abcam or one of our authorized distributors