

Anti-ACE2 antibody [EPR4436] ab108209

敲除验证
重组
RabMAb

★★★★★
7 Abreviews
19 References
8 图像

概述

产品名称	Anti-ACE2抗体[EPR4436]
描述	兔单克隆抗体[EPR4436] to ACE2
宿主	Rabbit
经测试应用	适用于: WB, IP, IHC-P 不适用于: ELISA, Flow Cyt or ICC/IF
种属反应性	与反应: Human 不与反应: Mouse
免疫原	Synthetic peptide. This information is proprietary to Abcam and/or its suppliers.
阳性对照	WB: Human testis, kidney and lung lysates; Human fetal kidney lysates; Calu-3, HepG2 and Caco-2 cell lysates. IHC-P: Human kidney and testis tissue. IP: Human testis tissue lysate.
常规说明	<p>This product is a recombinant monoclonal antibody, which offers several advantages including:</p> <ul style="list-style-type: none"> - High batch-to-batch consistency and reproducibility - Improved sensitivity and specificity - Long-term security of supply - Animal-free production <p>For more information see here.</p> <p>Our RabMAb[®] technology is a patented hybridoma-based technology for making rabbit monoclonal antibodies. For details on our patents, please refer to RabMAb[®] patents.</p> <p>Mouse, Rat: We have preliminary internal testing data to indicate this antibody may not react with these species. Please contact us for more information.</p>

性能

形式	Liquid
存放说明	Shipped at 4°C. Store at +4°C short term (1-2 weeks). Upon delivery aliquot. Store at -20°C. Avoid freeze / thaw cycle.
存储溶液	<p>pH: 7.20</p> <p>Preservative: 0.05% Sodium azide</p> <p>Constituents: 0.1% BSA, 40% Glycerol (glycerin, glycerine), 9.85% Tris glycine, 50% Tissue culture supernatant</p>

纯度	Protein A purified
克隆	单克隆
克隆编号	EPR4436
同种型	IgG

应用

The Abpromise guarantee Abpromise™ 承诺保证使用ab108209于以下的经测试应用

“应用说明”部分 下显示的仅为推荐的起始稀释度;实际最佳的稀释度/浓度应由使用者检定。

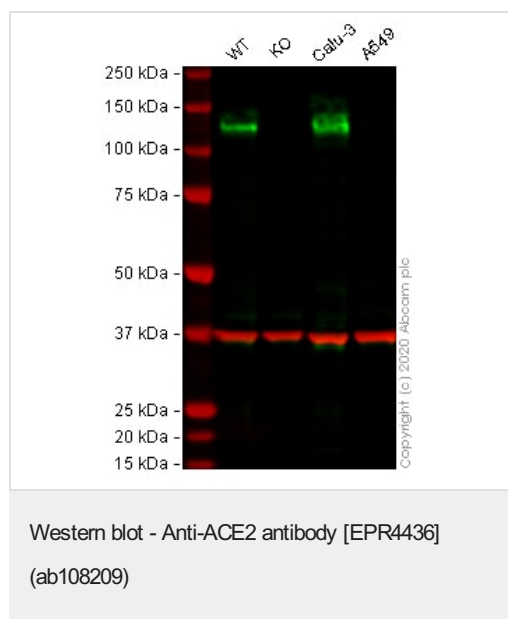
应用	Ab评论	说明
WB	★★★★★ (3)	1/1000 - 1/10000. Predicted molecular weight: 92 kDa.
IP		1/10 - 1/100.
IHC-P	★★★★★ (1)	1/100 - 1/250. Perform heat mediated antigen retrieval before commencing with IHC staining protocol. Heat up to 98°C, below boiling, and then let cool for 10-20 minutes. The use of an HRP/AP polymerized secondary antibody is recommended.

应用说明 Is unsuitable for ELISA, Flow Cyt or ICC/IF.

靶标

功能	Carboxypeptidase which converts angiotensin I to angiotensin 1-9, a peptide of unknown function, and angiotensin II to angiotensin 1-7, a vasodilator. Also able to hydrolyze apelin-13 and dynorphin-13 with high efficiency. May be an important regulator of heart function. In case of human coronaviruses SARS and HCoV-NL63 infections, serve as functional receptor for the spike glycoprotein of both coronaviruses.
组织特异性	Expressed in endothelial cells from small and large arteries, and in arterial smooth muscle cells. Expressed in lung alveolar epithelial cells, enterocytes of the small intestine, Leydig cells and Sertoli cells (at protein level). Expressed in heart, kidney, testis, and gastrointestinal system.
序列相似性	Belongs to the peptidase M2 family.
翻译后修饰	N-glycosylation on Asn-90 may limit SARS infectivity.
细胞定位	Secreted and Cell membrane.

图片



All lanes : Anti-ACE2 antibody [EPR4436] (ab108209) at 1/1000 dilution

Lane 1 : Wild-type HepG2 cell lysate

Lane 2 : ACE2 knockout HepG2 cell lysate

Lane 3 : Calu-3 cell lysate

Lane 4 : A549 cell lysate

Lysates/proteins at 30 µg per lane.

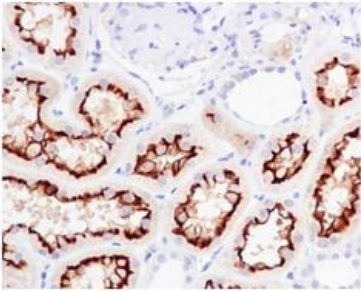
Performed under reducing conditions.

Predicted band size: 92 kDa

Observed band size: 130 kDa

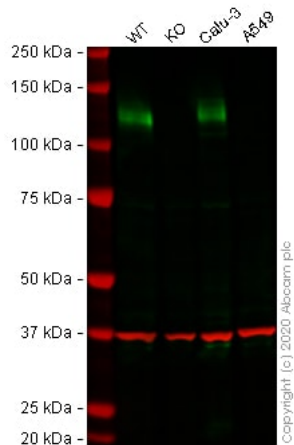
Lanes 1 - 4: Merged signal (red and green). Green - ab108209 observed at 130 kDa. Red - loading control **ab8245** (Mouse anti-GAPDH antibody [6C5]) observed at 37kDa.

ab108209 was shown to react with ACE2 in wild-type HepG2 cells in western blot with loss of signal observed in ACE2 knockout cell line **ab273733** (knockout cell lysate **ab275495**). Wild-type and ACE2 knockout HepG2 cell lysates were subjected to SDS-PAGE. Membranes were blocked in 3% milk in TBS-T (0.1% Tween®) before incubation with ab108209 and **ab8245** (Mouse anti-GAPDH antibody [6C5]) overnight at 4°C at a 1 in 1000 dilution and a 1 in 20000 dilution respectively. Blots were incubated with Goat anti-Rabbit IgG H&L (IRDye® 800CW) preabsorbed (**ab216773**) and Goat anti-Mouse IgG H&L (IRDye® 680RD) preabsorbed (**ab216776**) secondary antibodies at 1 in 20000 dilution for 1 hour at room temperature before imaging.



Immunohistochemistry (Formalin/PFA-fixed paraffin-embedded sections) - Anti-ACE2 antibody [EPR4436] (ab108209)

Immunohistochemistry (Formalin/PFA-fixed paraffin-embedded sections) analysis of human kidney tissue labelling ACE2 with ab108209 at 1/100. Heat mediated antigen retrieval was performed before commencing with IHC staining protocol.



Western blot - Anti-ACE2 antibody [EPR4436] (ab108209)

All lanes : Anti-ACE2 antibody [EPR4436] (ab108209) at 1/1000 dilution

Lane 1 : Wild-type Caco-2 cell lysate

Lane 2 : ACE2 knockout Caco-2 cell lysate

Lane 3 : Calu-3 cell lysate

Lane 4 : A549 cell lysate

Lysates/proteins at 30 µg per lane.

Performed under reducing conditions.

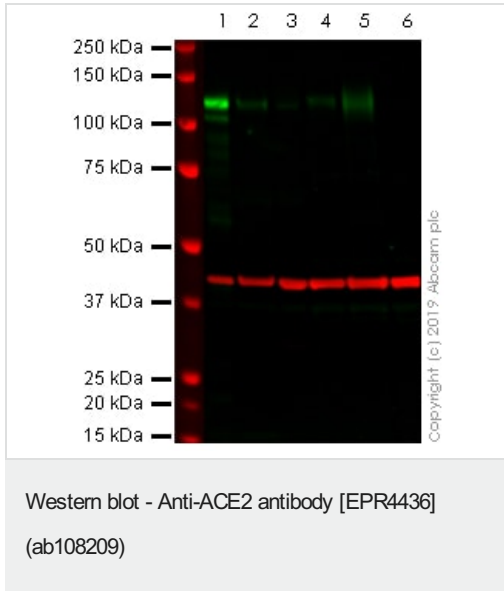
Predicted band size: 92 kDa

Observed band size: 125 kDa

Lanes 1 - 4: Merged signal (red and green). Green - ab108209 observed at 125 kDa. Red - loading control **ab8245** (Mouse anti-GAPDH antibody [6C5]) observed at 37kDa.

ab108209 was shown to react with ACE2 in Caco-2 wild-type cells in western blot with loss of signal observed in ACE2 knockout cell line **ab273731** (knockout cell lysate **ab275516**). Wild-type and ACE2 knockout Caco-2 cell lysates were subjected to SDS-PAGE. Membranes were blocked in fluorescent western blot (TBS-based) blocking solution before incubation with ab108209 and **ab8245** (Mouse anti-GAPDH antibody [6C5]) overnight at 4°C at a 1 in

1000 Dilution and a 1 in 20000 dilution respectively. Blots were incubated with Goat anti-Rabbit IgG H&L (IRDye® 800CW) preabsorbed (**ab216773**) and Goat anti-Mouse IgG H&L (IRDye® 680RD) preabsorbed (**ab216776**) secondary antibodies at 1 in 20000 dilution for 1 hour at room temperature before imaging.



All lanes : Anti-ACE2 antibody [EPR4436] (ab108209) at 1/1000 dilution

Lane 1 : Human testis cell lysate

Lane 2 : Human kidney cell lysate

Lane 3 : Human lung cell lysate

Lane 4 : HepG2 cell lysate

Lane 5 : Caco-2 cell lysate

Lane 6 : A549 cell lysate (negative control)

Lysates/proteins at 20 µg per lane.

Performed under reducing conditions.

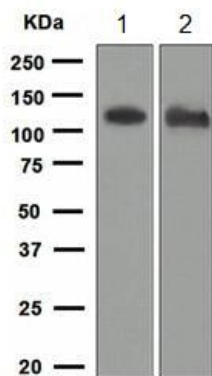
Predicted band size: 92 kDa

Observed band size: 120 kDa

Lanes 1 - 6: Merged signal (red and green). Green - ab108209 observed at 120 kDa. Red - loading control, Mouse anti-Actin observed at 42kDa.

ab108209 was shown to react with ACE2 in western blot. Membranes were blocked in 3% milk in TBS-T (0.1% Tween®) before incubation with ab108209 and Mouse anti-Actin overnight at 4°C at a 1 in 1000 dilution and a 1 in 20000 dilution respectively. Blots were incubated with Goat anti-Rabbit IgG H&L (IRDye® 800CW) preabsorbed (**ab216773**) and Goat anti-Mouse IgG H&L (IRDye® 680RD) preabsorbed (**ab216776**) secondary antibodies at 1 in 20000 dilution for 1 hour at room temperature before imaging.

Absence of ACE2 expression in A549 cells aligns with previously reported mRNA and protein data (PMID 16282461; fig.2b and 2c).



Western blot - Anti-ACE2 antibody [EPR4436]
(ab108209)

All lanes : Anti-ACE2 antibody [EPR4436] (ab108209)

Lane 1 : Human fetal kidney lysate

Lane 2 : Human testis lysate

Lysates/proteins at 10 µg per lane.

Secondary

All lanes : HRP labelled goat anti-rabbit at 1/2000 dilution

Predicted band size: 92 kDa

Observed band size: 115 kDa



Immunoprecipitation - Anti-ACE2 antibody
[EPR4436] (ab108209)

ab108209 Immunoprecipitating ACE2 in human testis tissue lysate. 0.35 mg of tissue lysate was incubated with 2 µg primary antibody (1/30). For western blotting a HRP-conjugated Veriblot for IP Detection Reagent (**ab131366**) (1/1000) was used to confirm successful immunoprecipitation.

Exposure time: 1 second.

Blocking buffer and concentration: 5% NFDM/TBST.

Diluting buffer and concentration: 5% NFDM /TBST.

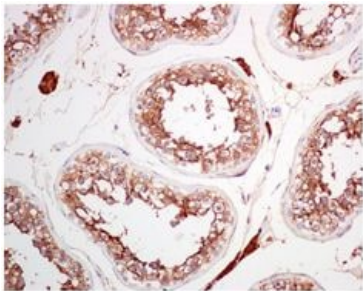
All lanes : Anti-ACE2 antibody [EPR4436] (ab108209) at 1/500 dilution

Lane 1 : Human testis tissue lysate at 10 µg

Lane 2 : ab108209 + Human testis tissue lysate

Lane 3 : Rabbit monoclonal IgG (**ab172730**) instead of ab108209 in Human testis tissue lysate

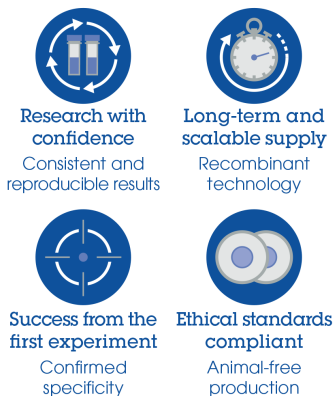
Observed band size: 110 kDa



Immunohistochemistry (Formalin/PFA-fixed paraffin-embedded sections) analysis of human testis tissue labelling ACE2 with ab108209 at 1/100. Heat mediated antigen retrieval was performed before commencing with IHC staining protocol.

Immunohistochemistry (Formalin/PFA-fixed paraffin-embedded sections) - Anti-ACE2 antibody [EPR4436] (ab108209)

Why choose a recombinant antibody?



Anti-ACE2 antibody [EPR4436] (ab108209)

Please note: All products are "FOR RESEARCH USE ONLY. NOT FOR USE IN DIAGNOSTIC PROCEDURES"

Our Abpromise to you: Quality guaranteed and expert technical support

- Replacement or refund for products not performing as stated on the datasheet
- Valid for 12 months from date of delivery
- Response to your inquiry within 24 hours
- We provide support in Chinese, English, French, German, Japanese and Spanish
- Extensive multi-media technical resources to help you
- We investigate all quality concerns to ensure our products perform to the highest standards

If the product does not perform as described on this datasheet, we will offer a refund or replacement. For full details of the Abpromise, please visit <https://www.abcam.cn/abpromise> or contact our technical team.

Terms and conditions

- Guarantee only valid for products bought direct from Abcam or one of our authorized distributors