

Anti-ABL1 antibody ab15130

★★★★★ 1 Abreviews 11 References 2 图像

概述

|       |   |
|-------|---|
| 产品名称  | Anti-ABL1抗体   |
| 描述    | 兔多克隆抗体to ABL1   |
| 宿主    | Rabbit  |
| 经测试应用 | 适用于: IP, WB, IHC-P, ICC/IF  |
| 种属反应性 | 与反应: Mouse, Human   |
| 免疫原   | Synthetic peptide. This information is proprietary to Abcam and/or its suppliers.   |
| 常规说明  | <p><b>This product is FOR RESEARCH USE ONLY. For commercial use, please contact <a href="mailto:partnerships@abcam.com">partnerships@abcam.com</a>.</b></p> <p>The Life Science industry has been in the grips of a reproducibility crisis for a number of years. Abcam is leading the way in addressing this with our range of recombinant monoclonal antibodies and knockout edited cell lines for gold-standard validation. Please check that this product meets your needs before purchasing.</p> <p>If you have any questions, special requirements or concerns, please send us an inquiry and/or contact our Support team ahead of purchase. Recommended alternatives for this product can be found below, along with publications, customer reviews and Q&amp;As</p> |

性能

|      |   |
|------|---|
| 形式   | Liquid  |
| 存放说明 | Shipped at 4°C. Upon delivery aliquot and store at -20°C. Avoid freeze / thaw cycles. |
| 存储溶液 | pH: 7.60<br>Preservative: 0.1% Sodium azide<br>Constituents: PBS, 1% BSA              |
| 纯度   | Immunogen affinity purified   |
| 克隆   | 多克隆   |
| 同种型  | IgG   |

应用

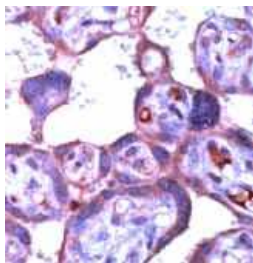
“应用说明”部分 下显示的仅为推荐的起始稀释度;实际最佳的稀释度/浓度应由使用者检定。

| 应用     | Ab评论      | 说明  |
|--------|-----------|---|
| IP     |           | Use at an assay dependent concentration.  |
| WB     | ★★★★★ (1) | Use at an assay dependent concentration.  |
| IHC-P  |           | 1/50. Perform heat mediated antigen retrieval before commencing with IHC staining protocol. |
| ICC/IF |           | Use a concentration of 5 µg/ml.   |

## 靶标

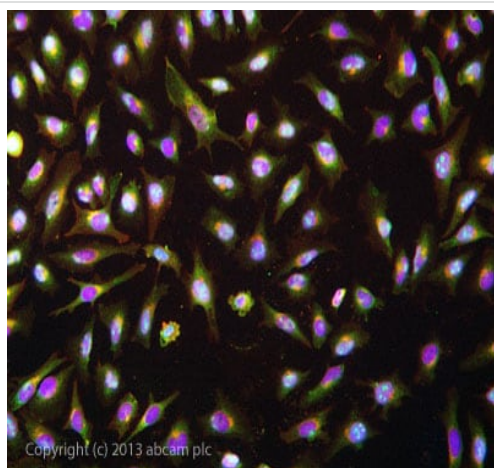
|       |  |
|-------|--|
| 功能    | Protein kinase that regulates key processes linked to cell growth and survival. Regulates cytoskeleton remodeling during cell differentiation, cell division and cell adhesion. Localizes to dynamic actin structures, and phosphorylates CRK and CRKL, DOK1, and other proteins controlling cytoskeleton dynamics. Regulates DNA repair potentially by activating the proapoptotic pathway when the DNA damage is too severe to be repaired. Phosphorylates PSMA7 that leads to an inhibition of proteasomal activity and cell cycle transition blocks. |
| 组织特异性 | Widely expressed.  |
| 疾病相关  | Note=A chromosomal aberration involving ABL1 is a cause of chronic myeloid leukemia. Translocation t(9;22)(q34;q11) with BCR. The translocation produces a BCR-ABL found also in acute myeloid leukemia (AML) and acute lymphoblastic leukemia (ALL).  |
| 序列相似性 | Belongs to the protein kinase superfamily. Tyr protein kinase family. ABL subfamily. Contains 1 protein kinase domain. Contains 1 SH2 domain. Contains 1 SH3 domain.   |
| 翻译后修饰 | Phosphorylated by PRKDC (By similarity). DNA damage-induced activation of c-Abl requires the function of ATM and Ser-446 phosphorylation (By similarity). Phosphorylation on Thr-735 is required for binding 14-3-3 proteins for cytoplasmic translocation. Isoform IB is myristoylated on Gly-2.  |
| 细胞定位  | Cytoplasm > cytoskeleton. Nucleus. Sequestered into the cytoplasm through interaction with 14-3-3 proteins and Nucleus membrane. The myristoylated c-ABL protein is reported to be nuclear.  |

## 图片



Immunohistochemistry (Formalin/PFA-fixed paraffin-embedded sections) - Anti-ABL1 antibody (ab15130)

ab15130 staining ABL1 in human placenta by Immunohistochemistry (FFPE-sections)..



Immunocytochemistry/ Immunofluorescence - Anti-ABL1 antibody (ab15130)

ab15130 stained HeLa cells. The cells were 4% formaldehyde fixed (10 min) and then incubated in 1%BSA / 10% normal goat serum / 0.3M glycine in 0.1% PBS-Tween for 1h to permeabilise the cells and block non-specific protein-protein interactions. The cells were then incubated with the antibody ab15130 at 5µg/ml overnight at +4°C. The secondary antibody (green) was DyLight® 488 goat anti-rabbit (**ab96899**) IgG (H+L) used at a 1/1000 dilution for 1h. Alexa Fluor® 594 WGA was used to label plasma membranes (red) at a 1/200 dilution for 1h. DAPI was used to stain the cell nuclei (blue) at a concentration of 1.43µM. This antibody also gave a positive result in 4% formaldehyde fixed (10min) Hek293, HepG2, and MCF-7 cells, and also in 100% Methanol fixed (5min) Hela, Hek293, HepG2, and MCF-7 cells.

**Please note:** All products are "FOR RESEARCH USE ONLY. NOT FOR USE IN DIAGNOSTIC PROCEDURES"

### Our Abpromise to you: Quality guaranteed and expert technical support

- Replacement or refund for products not performing as stated on the datasheet
- Valid for 12 months from date of delivery
- Response to your inquiry within 24 hours
- We provide support in Chinese, English, French, German, Japanese and Spanish
- Extensive multi-media technical resources to help you
- We investigate all quality concerns to ensure our products perform to the highest standards

If the product does not perform as described on this datasheet, we will offer a refund or replacement. For full details of the Abpromise, please visit <https://www.abcam.cn/abpromise> or contact our technical team.

### Terms and conditions

- Guarantee only valid for products bought direct from Abcam or one of our authorized distributors