

### Anti-ABCE1 antibody [EPR15373(B)] - C-terminal ab185548

**重组** RabMAb

**10 References** [9 图像](#)

#### 概述

|       |   |
|-------|---|
| 产品名称  | Anti-ABCE1抗体[EPR15373(B)] - C-terminal  |
| 描述    | 兔单克隆抗体[EPR15373(B)] to ABCE1 - C-terminal   |
| 宿主    | Rabbit  |
| 特异性   | The rat recommendation is based on the WB results. We do not guarantee IHC-P for rat.   |
| 经测试应用 | <b>适用于:</b> Flow Cyt (Intra), ICC/IF, IP, WB, IHC-P   |
| 种属反应性 | <b>与反应:</b> Mouse, Rat, Human   |
| 免疫原   | Synthetic peptide. This information is proprietary to Abcam and/or its suppliers.   |
| 常规说明  | <p>This product is a recombinant monoclonal antibody, which offers several advantages including:</p> <ul style="list-style-type: none"> <li>- High batch-to-batch consistency and reproducibility</li> <li>- Improved sensitivity and specificity</li> <li>- Long-term security of supply</li> <li>- Animal-free production</li> </ul> <p>For more information <a href="#">see here</a>.</p> <p>Our RabMAb<sup>®</sup> technology is a patented hybridoma-based technology for making rabbit monoclonal antibodies. For details on our patents, please refer to <a href="#">RabMAb<sup>®</sup> patents</a>.</p> |

#### 性能

|      |  |
|------|--|
| 形式   | Liquid   |
| 存放说明 | Shipped at 4°C. Store at +4°C short term (1-2 weeks). Upon delivery aliquot. Store at -20°C long term. Avoid freeze / thaw cycle.  |
| 存储溶液 | <p>pH: 7.2</p> <p>Preservative: 0.01% Sodium azide</p> <p>Constituents: 40% Glycerol (glycerin, glycerine), 59% PBS, 0.05% BSA</p> |
| 纯度   | Protein A purified   |
| 克隆   | 单克隆  |
| 克隆编号 | EPR15373(B)  |
| 同种型  | IgG  |

## 应用

### The Abpromise guarantee

**Abpromise™**承诺保证使用ab185548于以下的经测试应用

“应用说明”部分 下显示的仅为推荐的起始稀释度;实际最佳的稀释度/浓度应由使用者检定。

| 应用               | Ab评论 | 说明  |
|------------------|------|---|
| Flow Cyt (Intra) |      | 1/220.<br><b>ab172730</b> - Rabbit monoclonal IgG, is suitable for use as an isotype control with this antibody.  |
| ICC/IF           |      | 1/100 - 1/250.  |
| IP               |      | 1/30 - 1/50.  |
| WB               |      | 1/1000 - 1/10000. Detects a band of approximately 67 kDa (predicted molecular weight: 67 kDa).  |
| IHC-P            |      | 1/100. Perform heat mediated antigen retrieval with Tris/EDTA buffer pH 9.0 before commencing with IHC staining protocol. The rat recommendation is based on the WB results. We do not guarantee IHC-P for rat. |

## 靶标

### 功能

Antagonizes the binding of 2-5A (5'-phosphorylated 2',5'-linked oligoadenylates) by RNase L through direct interaction with RNase L and therefore inhibits its endoribonuclease activity. May play a central role in the regulation of mRNA turnover. Antagonizes the anti-viral effect of the interferon-regulated 2-5A/RNase L pathway. May act as a chaperone for post-translational events during HIV-1 capsid assembly.

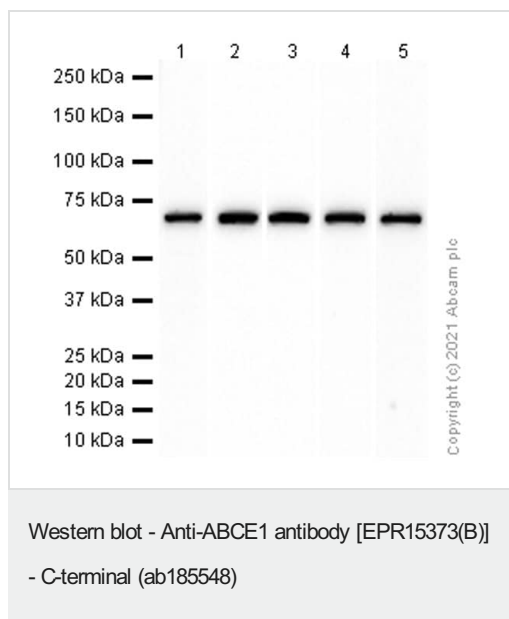
### 序列相似性

Belongs to the ABC transporter superfamily. ABCE family.  
Contains 2 4Fe-4S ferredoxin-type domains.  
Contains 2 ABC transporter domains.

### 细胞定位

Cytoplasm. Mitochondrion. Localized to clusters of virus formation at the plasma membrane.

## 图片



**All lanes :** Anti-ABCE1 antibody [EPR15373(B)] - C-terminal (ab185548) at 1/5000 dilution (Purified)

**Lane 1 :** HeLa (Human cervix adenocarcinoma epithelial cell) whole cell lysate

**Lane 2 :** K-562 (Human chronic myelogenous leukemia lymphoblast) whole cell lysate

**Lane 3 :** Jurkat (Human T cell leukemia T lymphocyte) whole cell lysate

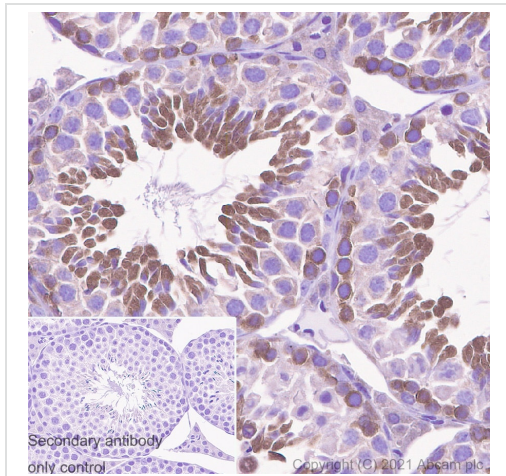
**Lane 4 :** NIH/3T3 (Mouse embryonic fibroblast) whole cell lysate

**Lane 5 :** PC-12 (Rat adrenal gland pheochromocytoma ) whole cell lysate

### Secondary

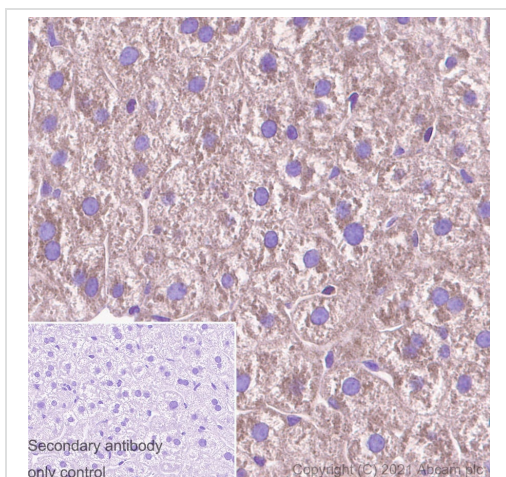
**All lanes :** Goat Anti-Rabbit IgG H&L (HRP) ([ab97051](#)) at 1/20000 dilution

**Predicted band size:** 67 kDa



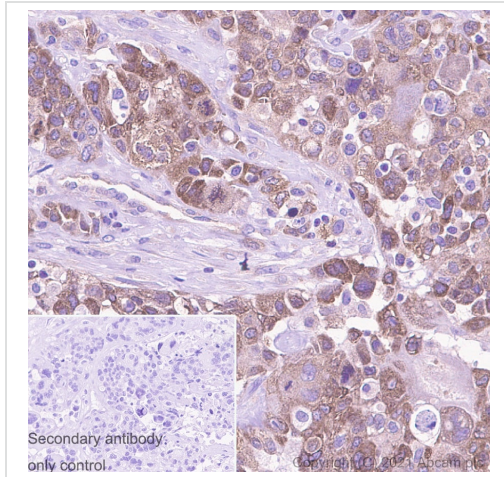
Immunohistochemistry (Formalin/PFA-fixed paraffin-embedded sections) - Anti-ABCE1 antibody  
[EPR15373(B)] - C-terminal (ab185548)

Immunohistochemistry (Formalin/PFA-fixed paraffin-embedded sections) analysis of mouse testis tissue sections labeling ABCE1 with Purified ab185548 at 1:300 (3.67 µg/ml). Heat mediated antigen retrieval was performed using Heat mediated antigen retrieval using Bond™ Epitope Retrieval Solution 2 (pH 9.0) . Tissue was counterstained with Hematoxylin. Rabbit specific IHC polymer detection kit HRP/DAB (**ab209101**) secondary antibody was used at 1:0 dilution. PBS instead of the primary antibody was used as the negative control.



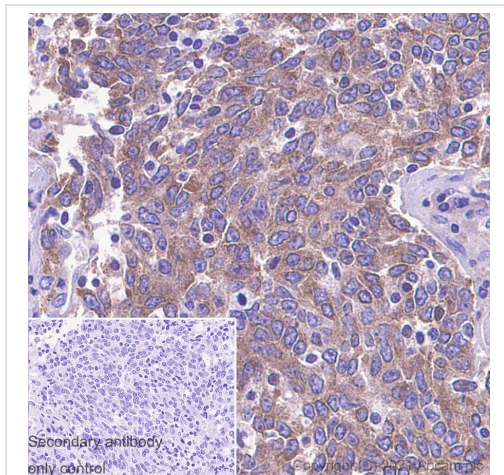
Immunohistochemistry (Formalin/PFA-fixed paraffin-embedded sections) - Anti-ABCE1 antibody  
[EPR15373(B)] - C-terminal (ab185548)

Immunohistochemistry (Formalin/PFA-fixed paraffin-embedded sections) analysis of mouse liver tissue sections labeling ABCE1 with Purified ab185548 at 1:300 (3.67 µg/ml). Heat mediated antigen retrieval was performed using Heat mediated antigen retrieval using Bond™ Epitope Retrieval Solution 2 (pH 9.0) . Tissue was counterstained with Hematoxylin. Rabbit specific IHC polymer detection kit HRP/DAB (**ab209101**) secondary antibody was used at 1:0 dilution. PBS instead of the primary antibody was used as the negative control.



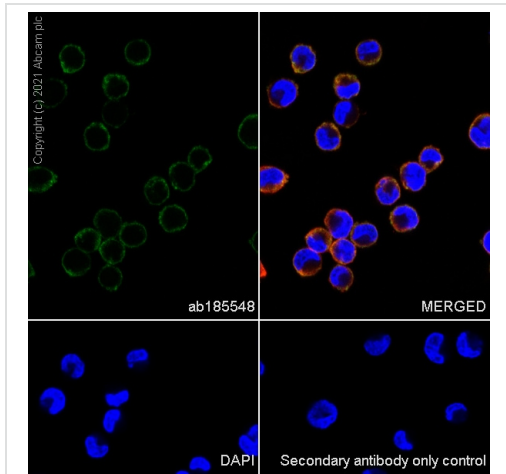
Immunohistochemistry (Formalin/PFA-fixed paraffin-embedded sections) - Anti-ABCE1 antibody  
[EPR15373(B)] - C-terminal (ab185548)

Immunohistochemistry (Formalin/PFA-fixed paraffin-embedded sections) analysis of human breast carcinoma tissue sections labeling ABCE1 with Purified ab185548 at 1:100 (11 µg/ml). Heat mediated antigen retrieval was performed using Heat mediated antigen retrieval using Bond™ Epitope Retrieval Solution 2 (pH 9.0) . Tissue was counterstained with Hematoxylin. Rabbit specific IHC polymer detection kit HRP/DAB (**ab209101**) secondary antibody was used at 1:0 dilution. PBS instead of the primary antibody was used as the negative control.



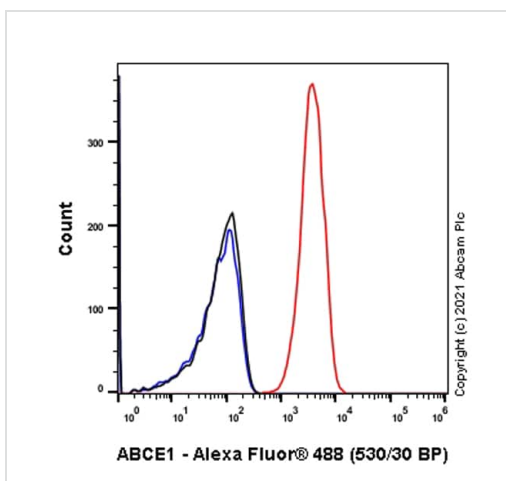
Immunohistochemistry (Formalin/PFA-fixed paraffin-embedded sections) - Anti-ABCE1 antibody  
[EPR15373(B)] - C-terminal (ab185548)

Immunohistochemistry (Formalin/PFA-fixed paraffin-embedded sections) analysis of human lung carcinoma tissue sections labeling ABCE1 with Purified ab185548 at 1:100 (11 µg/ml). Heat mediated antigen retrieval was performed using Heat mediated antigen retrieval using Bond™ Epitope Retrieval Solution 2 (pH 9.0) . Tissue was counterstained with Hematoxylin. Rabbit specific IHC polymer detection kit HRP/DAB (**ab209101**) secondary antibody was used at 1:0 dilution. PBS instead of the primary antibody was used as the negative control.



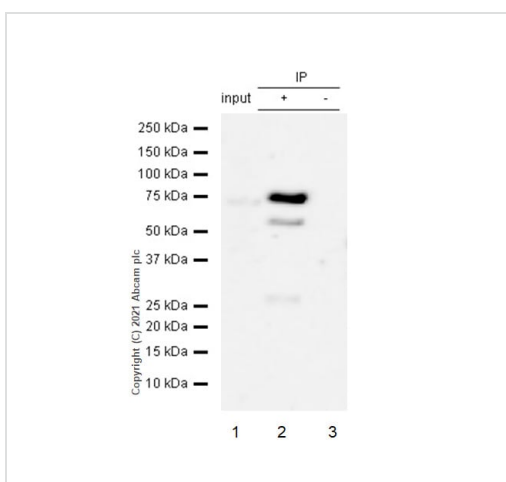
Immunocytochemistry/ Immunofluorescence - Anti-ABCE1 antibody [EPR15373(B)] - C-terminal (ab185548)

Immunocytochemistry analysis of K-562 (Human chronic myelogenous leukemia lymphoblast) cells labeling ABCE1 with Purified ab185548 at 1:100 dilution (10 µg/ml). Cells were fixed in 4% Paraformaldehyde and permeabilized with 0.1% tritonX-100. Cells were counterstained with Ab195889 Anti-alpha Tubulin antibody [DM1A]+H21:L21 - Microtubule Marker (Alexa Fluor® 594) 1:200 (2.5 µg/ml). Goat anti rabbit IgG (Alexa Fluor® 488, **ab150077**) was used as the secondary antibody at 1:1000 (2 µg/ml) dilution. DAPI (blue) was used as nuclear counterstain. PBS instead of the primary antibody was used as the secondary antibody only control.



Flow Cytometry (Intracellular) - Anti-ABCE1 antibody [EPR15373(B)] - C-terminal (ab185548)

Flow Cytometry analysis of K-562 (Human chronic myelogenous leukemia lymphoblast) cells labelling ABCE1 with Purified ab185548 at 1:100 dilution (10 µg/ml) (Red). Cells were fixed with 4% Paraformaldehyde and permeabilised with 90% Methanol. A Goat anti rabbit IgG (Alexa Fluor® 488, **ab150081**) secondary antibody was used at 1:2000. Isotype control - Rabbit monoclonal IgG (Black). Unlabelled control - Cell without incubation with primary antibody and secondary antibody (Blue).



Immunoprecipitation - Anti-ABCE1 antibody [EPR15373(B)] - C-terminal (ab185548)

Purified ab185548 at 1:60 dilution (2µg) immunoprecipitating ABCE1 in HEK-293 whole cell lysate.  
Lane 1 (input): HEK-293 (Human embryonic kidney epithelial cell) whole cell lysate 10 µg.  
Lane 2 (+): ab185548 + HEK-293 whole cell lysate.  
Lane 3 (-): Rabbit monoclonal IgG (**ab172730**) instead of ab185548 in HEK-293 whole cell lysate.  
VeriBlot for IP Detection Reagent (HRP)(**ab131366**) (1:1000 dilution) was used for Western blotting.  
Blocking Buffer and concentration: 5% NFDm/TBST.  
Diluting buffer and concentration: 5% NFDm/TBST.



### Why choose a recombinant antibody?



**Research with confidence**  
Consistent and reproducible results



**Long-term and scalable supply**  
Recombinant technology



**Success from the first experiment**  
Confirmed specificity



**Ethical standards compliant**  
Animal-free production

Anti-ABCE1 antibody [EPR15373(B)] - C-terminal  
(ab185548)

**Please note:** All products are "FOR RESEARCH USE ONLY. NOT FOR USE IN DIAGNOSTIC PROCEDURES"

### Our Abpromise to you: Quality guaranteed and expert technical support

---

- Replacement or refund for products not performing as stated on the datasheet
- Valid for 12 months from date of delivery
- Response to your inquiry within 24 hours
- We provide support in Chinese, English, French, German, Japanese and Spanish
- Extensive multi-media technical resources to help you
- We investigate all quality concerns to ensure our products perform to the highest standards

If the product does not perform as described on this datasheet, we will offer a refund or replacement. For full details of the Abpromise, please visit <https://www.abcam.cn/abpromise> or contact our technical team.

### Terms and conditions

---

- Guarantee only valid for products bought direct from Abcam or one of our authorized distributors