

### Anti-ABCD1/ALD antibody [EPR15929] ab197013

**重组** RabMAb

★★★★★ **1 Abreviews** **4 References** **6 图像**

#### 概述

产品名称	Anti-ABCD1/ALD抗体[EPR15929]
描述	兔单克隆抗体[EPR15929] to ABCD1/ALD
宿主	Rabbit
经测试应用	<b>适用于:</b> WB, ICC/IF, Flow Cyt (Intra)
种属反应性	<b>与反应:</b> Mouse, Rat, Human
免疫原	Recombinant fragment. This information is proprietary to Abcam and/or its suppliers.
阳性对照	WB: HepG2 cells, HeLa cells, human fetal liver lysate; JAR cells; C6 cells, RAW 264.7 cells, PC-12 cells, NIH/3t3 cells. ICC/IF: MCF7 cells. Flow Cyt (intra): HeLa cells.
常规说明	<p>This product is a recombinant monoclonal antibody, which offers several advantages including:</p> <ul style="list-style-type: none"> <li>- High batch-to-batch consistency and reproducibility</li> <li>- Improved sensitivity and specificity</li> <li>- Long-term security of supply</li> <li>- Animal-free production</li> </ul> <p>For more information <a href="#">see here</a>.</p> <p>Our RabMAb<sup>®</sup> technology is a patented hybridoma-based technology for making rabbit monoclonal antibodies. For details on our patents, please refer to <a href="#">RabMAb<sup>®</sup> patents</a>.</p>

#### 性能

形式	Liquid
存放说明	Shipped at 4°C. Store at +4°C short term (1-2 weeks). Upon delivery aliquot. Store at -20°C long term. Avoid freeze / thaw cycle.
存储溶液	<p>pH: 7.2</p> <p>Preservative: 0.01% Sodium azide</p> <p>Constituents: 59% PBS, 40% Glycerol, 0.05% BSA</p>
纯度	Protein A purified
克隆	单克隆
克隆编号	EPR15929
同种型	IgG

应用

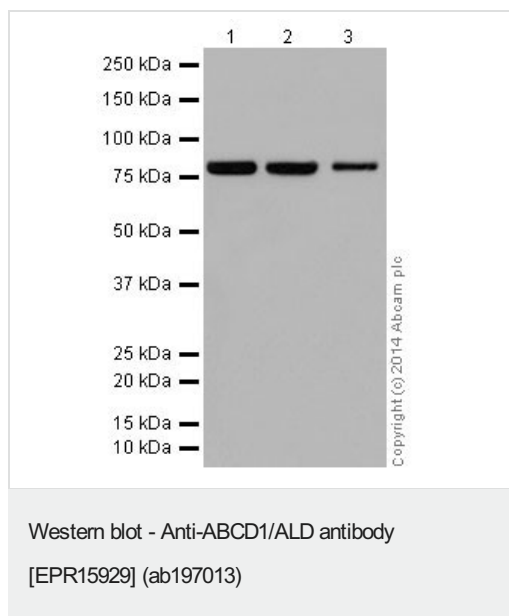
**The Abpromise guarantee**      **Abpromise™**承诺保证使用ab197013于以下的经测试应用  
“应用说明”部分 下显示的仅为推荐的起始稀释度;实际最佳的稀释度/浓度应由使用者检定。

应用	Ab评论	说明
WB		1/10000. Detects a band of approximately 83 kDa (predicted molecular weight: 83 kDa).
ICC/IF		1/100.
Flow Cyt (Intra)		Use at an assay dependent concentration.

靶标

功能	Probable transporter. The nucleotide-binding fold acts as an ATP-binding subunit with ATPase activity.
疾病相关	Defects in ABCD1 are the cause of adrenoleukodystrophy X-linked (X-ALD) [MIM:300100]. X-ALD is a peroxisomal metabolic disorder characterized by progressive multifocal demyelination of the central nervous system and by peripheral adrenal insufficiency (Addison disease). It results in mental deterioration, corticospinal tract dysfunction, and cortical blindness. Different clinical manifestations exist like: cerebral childhood ALD (CALD), adult cerebral ALD (ACALD), adrenomyeloneuropathy (AMN) and 'Addison disease only' (ADO) phenotype. Note=The promoter region of ABCD1 is deleted in the chromosome Xq28 deletion syndrome which involves ABCD1 and the neighboring gene BCAP31.
序列相似性	Belongs to the ABC transporter superfamily. ABCD family. Peroxisomal fatty acyl CoA transporter (TC 3.A.1.203) subfamily. Contains 1 ABC transmembrane type-1 domain. Contains 1 ABC transporter domain.
细胞定位	Peroxisome membrane.

图片



**All lanes :** Anti-ABCD1/ALD antibody [EPR15929] (ab197013) at 1/10000 dilution

**Lane 1 :** HepG2 (Human liver hepatocellular carcinoma) whole cell lysate

**Lane 2 :** HeLa (Human epithelial cells from cervix adenocarcinoma) whole cell lysate

**Lane 3 :** Human fetal liver lysate

Lysates/proteins at 20 µg per lane.

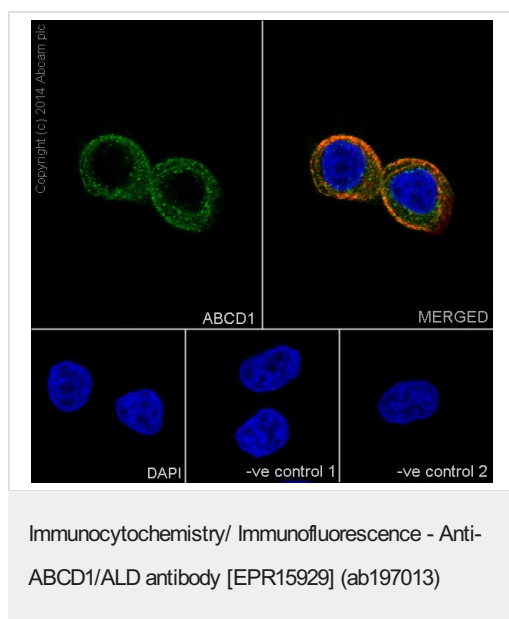
## Secondary

**All lanes :** Goat Anti-Rabbit IgG, (H+L), Peroxidase conjugated at 1/1000 dilution

**Predicted band size:** 83 kDa

**Observed band size:** 83 kDa

Blocking/Dilution buffer: 5% NFDm/TBST.

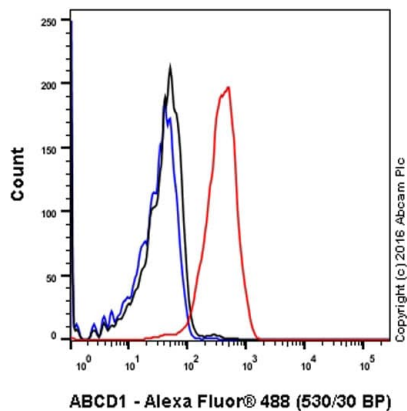


Immunofluorescent analysis of 4% paraformaldehyde-fixed, 0.1% Triton X-100 permeabilized MCF7 (Human breast adenocarcinoma cell line) cells labeling ABCD1 / ALD with ab197013 at 1/100 dilution, followed by Goat anti-rabbit IgG (Alexa Fluor® 488) (**ab150077**) secondary antibody at 1/500 dilution (green). Cytoplasm staining on MCF7 cell line is observed. The nuclear counter stain is DAPI (blue). Tubulin is detected with **ab7291** (anti-Tubulin mouse mAb) at 1/1000 dilution and **ab150120** (AlexaFluor®594 Goat anti-Mouse secondary) at 1/500 dilution (red).

The negative controls are as follows:

-ve control 1: ab197013 at 1/100 dilution followed by **ab150120** (AlexaFluor®594 Goat anti-Mouse secondary) at 1/500 dilution.

-ve control 2: **ab7291** (anti-Tubulin mouse mAb) at 1/1000 dilution followed by **ab150077** (Alexa Fluor®488 Goat Anti-Rabbit IgG H&L) at 1/500 dilution.

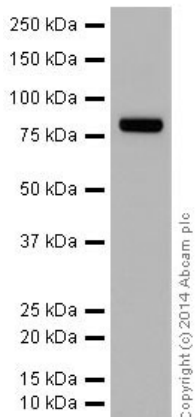


Flow Cytometry (Intracellular) - Anti-ABCD1/ALD antibody [EPR15929] (ab197013)

ab197013 staining ABCD1/ALD in the human cell line HeLa (human cervix adenocarcinoma) by intracellular flow cytometry. Cells were fixed with 4% paraformaldehyde and permeabilised with 90% methanol. The sample was incubated with the primary antibody at a dilution of 1/70. A goat anti rabbit IgG (Alexa Fluor® 488) at a dilution of 1/2000 was used as the secondary antibody.

Isootype control: Rabbit monoclonal IgG (Black)

Unlabelled control: Cell without incubation with primary antibody and secondary antibody (Blue)



Western blot - Anti-ABCD1/ALD antibody [EPR15929] (ab197013)

Anti-ABCD1/ALD antibody [EPR15929] (ab197013) at 1/10000 dilution + JAR (Human placenta choriocarcinoma cell line) whole cell lysate at 20 µg

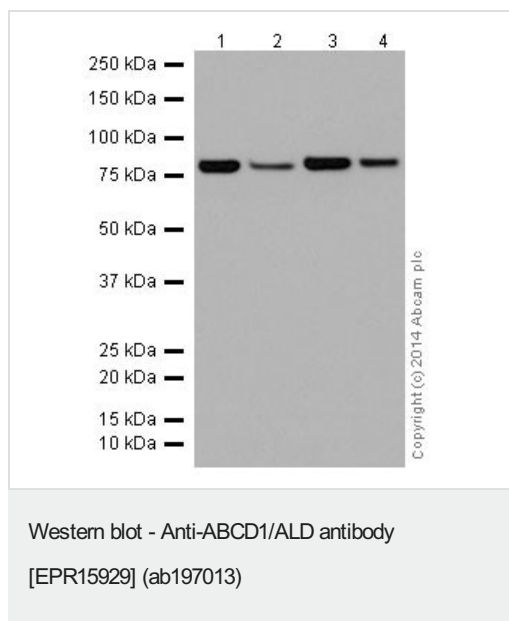
#### Secondary

Goat Anti-Rabbit IgG, (H+L), Peroxidase conjugated at 1/1000 dilution

**Predicted band size:** 83 kDa

**Observed band size:** 83 kDa

Blocking/Dilution buffer: 5% NFDM/TBST.



**All lanes :** Anti-ABCD1/ALD antibody [EPR15929] (ab197013) at 1/10000 dilution

**Lane 1 :** C6 (Rat glial tumor cells) whole cell lysate

**Lane 2 :** RAW 264.7 (Mouse macrophage cells transformed with Abelson murine leukemia virus) whole cell lysate

**Lane 3 :** PC-12 (Rat adrenal gland pheochromocytoma) whole cell lysate

**Lane 4 :** NIH/3T3 (Mouse embryo fibroblast cells) whole cell lysate

Lysates/proteins at 10 µg per lane.

#### Secondary

**All lanes :** Goat Anti-Rabbit IgG, (H+L), Peroxidase conjugated at 1/1000 dilution

**Predicted band size:** 83 kDa

**Observed band size:** 83 kDa

Blocking/Dilution buffer: 5% NFDm/TBST.

### Why choose a recombinant antibody?



**Research with confidence**  
Consistent and reproducible results



**Long-term and scalable supply**  
Recombinant technology



**Success from the first experiment**  
Confirmed specificity



**Ethical standards compliant**  
Animal-free production

Anti-ABCD1/ALD antibody [EPR15929] (ab197013)

**Please note:** All products are "FOR RESEARCH USE ONLY. NOT FOR USE IN DIAGNOSTIC PROCEDURES"

### Our Abpromise to you: Quality guaranteed and expert technical support

---

- Replacement or refund for products not performing as stated on the datasheet
- Valid for 12 months from date of delivery
- Response to your inquiry within 24 hours
- We provide support in Chinese, English, French, German, Japanese and Spanish
- Extensive multi-media technical resources to help you
- We investigate all quality concerns to ensure our products perform to the highest standards

If the product does not perform as described on this datasheet, we will offer a refund or replacement. For full details of the Abpromise, please visit <https://www.abcam.cn/abpromise> or contact our technical team.

### Terms and conditions

---

- Guarantee only valid for products bought direct from Abcam or one of our authorized distributors