

Anti-ABCB6/PRP antibody - C-terminal ab194409

[1 References](#) [4 图像](#)

概述

产品名称	Anti-ABCB6/PRP抗体- C-terminal
描述	小鼠多克隆抗体to ABCB6/PRP - C-terminal
宿主	Mouse
经测试应用	适用于: WB
种属反应性	与反应: Mouse, Rat, Human
免疫原	Recombinant fragment (GST-tag) corresponding to Human ABCB6/PRP aa 700 to the C-terminus (C terminal). NP_005680 Database link: Q9NP58

 [Run BLAST with](#)

 [Run BLAST with](#)

阳性对照 HeLa, RAW264.7, PC-12 and NIH3T3 cell lysate.

常规说明

The Life Science industry has been in the grips of a reproducibility crisis for a number of years. Abcam is leading the way in addressing this with our range of recombinant monoclonal antibodies and knockout edited cell lines for gold-standard validation. Please check that this product meets your needs before purchasing.

If you have any questions, special requirements or concerns, please send us an inquiry and/or contact our Support team ahead of purchase. Recommended alternatives for this product can be found below, along with publications, customer reviews and Q&As

性能

形式	Liquid
存放说明	Shipped at 4°C. Store at +4°C short term (1-2 weeks). Upon delivery aliquot. Store at -20°C long term. Avoid freeze / thaw cycle.
存储溶液	Constituent: 50% Glycerol (glycerin, glycerine)
纯度	Whole antiserum
克隆	多克隆
同种型	IgG

应用

The Abpromise guarantee

Abpromise™ 承诺保证使用 ab194409 于以下的经测试应用

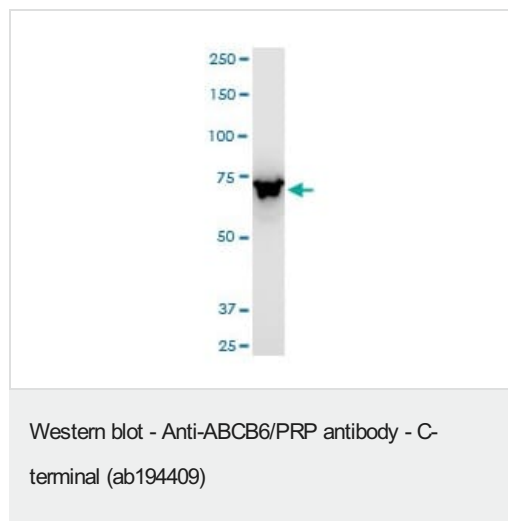
“应用说明”部分下显示的仅为推荐的起始稀释度；实际最佳的稀释度/浓度应由使用者检定。

应用	Ab评论	说明
WB		1/500 - 1/2500. Predicted molecular weight: 94 kDa.

靶标

功能	Binds heme and porphyrins and functions in their ATP-dependent uptake into the mitochondria. Plays a crucial role in heme synthesis.
组织特异性	Widely expressed. Highest expression in heart and skeletal muscles.
序列相似性	Belongs to the ABC transporter superfamily. ABCB family. Heavy Metal importer (TC 3.A.1.210) subfamily. Contains 1 ABC transmembrane type-1 domain. Contains 1 ABC transporter domain.
发展阶段	Highly expressed in fetal liver.
细胞定位	Mitochondrion outer membrane.

图片

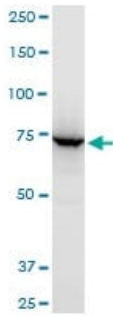


Anti-ABCB6/PRP antibody - C-terminal (ab194409) at 1/500 dilution + NIH3T3 cell lysate at 50 µg

Secondary

Goat Anti-Mouse IgG at 1/2500 dilution

Predicted band size: 94 kDa



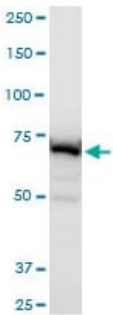
Western blot - Anti-ABCB6/PRP antibody - C-terminal (ab194409)

Anti-ABCB6/PRP antibody - C-terminal (ab194409) at 1/500 dilution + RAW264.7 cell lysate at 50 μ g

Secondary

Goat Anti-Mouse IgG at 1/2500 dilution

Predicted band size: 94 kDa



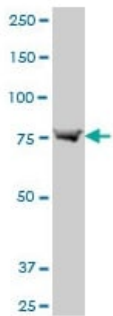
Western blot - Anti-ABCB6/PRP antibody - C-terminal (ab194409)

Anti-ABCB6/PRP antibody - C-terminal (ab194409) at 1/500 dilution + PC-12 cell lysate at 50 μ g

Secondary

Goat Anti-Mouse IgG at 1/2500 dilution

Predicted band size: 94 kDa



Western blot - Anti-ABCB6/PRP antibody - C-terminal (ab194409)

Anti-ABCB6/PRP antibody - C-terminal (ab194409) at 1/500 dilution + HeLa cell lysate at 50 μ g

Secondary

Goat Anti-Mouse IgG at 1/2500 dilution

Predicted band size: 94 kDa

Please note: All products are "FOR RESEARCH USE ONLY. NOT FOR USE IN DIAGNOSTIC PROCEDURES"

Our Abpromise to you: Quality guaranteed and expert technical support

- Replacement or refund for products not performing as stated on the datasheet

- Valid for 12 months from date of delivery
- Response to your inquiry within 24 hours

- We provide support in Chinese, English, French, German, Japanese and Spanish
- Extensive multi-media technical resources to help you
- We investigate all quality concerns to ensure our products perform to the highest standards

If the product does not perform as described on this datasheet, we will offer a refund or replacement. For full details of the Abpromise, please visit <https://www.abcam.cn/abpromise> or contact our technical team.

Terms and conditions

- Guarantee only valid for products bought direct from Abcam or one of our authorized distributors