

# Anti-ABCB5 antibody ab197406

## 2 图像

### 概述

|       |   |
|-------|---|
| 产品名称  | Anti-ABCB5抗体  |
| 描述    | 兔多克隆抗体to ABCB5  |
| 宿主    | Rabbit  |
| 经测试应用 | 适用于: IHC-P  |
| 种属反应性 | 与反应: Human  |
| 免疫原   | Recombinant fragment corresponding to Human ABCB5 (internal sequence).<br>Database link: <a href="#">Q2M3G0</a>   |
| 阳性对照  | Human cervical cancer and renal cancer tissues.   |
| 常规说明  | <p>The Life Science industry has been in the grips of a reproducibility crisis for a number of years. Abcam is leading the way in addressing this with our range of recombinant monoclonal antibodies and knockout edited cell lines for gold-standard validation. Please check that this product meets your needs before purchasing.</p> <p>If you have any questions, special requirements or concerns, please send us an inquiry and/or contact our Support team ahead of purchase. Recommended alternatives for this product can be found below, along with publications, customer reviews and Q&amp;As</p> |

### 性能

|      |   |
|------|---|
| 形式   | Liquid  |
| 存放说明 | Shipped at 4°C. Store at +4°C short term (1-2 weeks). Upon delivery aliquot. Store at -20°C long term. Avoid freeze / thaw cycle. |
| 存储溶液 | pH: 7.4<br>Preservative: 0.05% Sodium azide<br>Constituents: 50% Glycerol (glycerin, glycerine), 49% PBS                          |
| 纯度   | Immunogen affinity purified   |
| 克隆   | 多克隆   |
| 同种型  | IgG   |

### 应用

The Abpromise guarantee

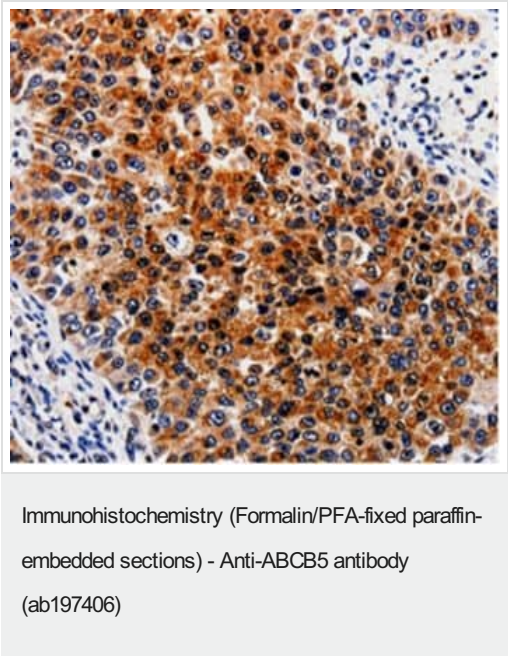
Abpromise™承诺保证使用ab197406于以下的经测试应用

“应用说明”部分 下显示的仅为推荐的起始稀释度;实际最佳的稀释度/浓度应由使用者检定。

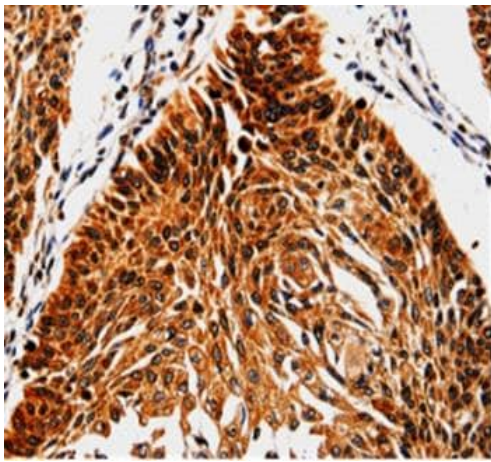
| 应用    | Ab评论 | 说明           |
|-------|------|--------------|
| IHC-P |      | 1/10 - 1/50. |

|       |   |
|-------|---|
| 靶标    |   |
| 功能    | Plasma membrane transporter able to mediate efflux from cells of the rhodamine dye and of the therapeutic drug doxorubicin. Responsible for the resistance to doxorubicin of a subset of malignant melanomas. |
| 组织特异性 | Expressed by CD133-expressing progenitor cells among epidermal melanocytes (at protein level). Widely expressed with specific expression in pigment cells. Also expressed in several malignant tissues.       |
| 序列相似性 | Belongs to the ABC transporter superfamily. ABCB family. Multidrug resistance exporter (TC 3.A.1.201) subfamily.<br>Contains 1 ABC transmembrane type-1 domain.<br>Contains 2 ABC transporter domains.        |
| 细胞定位  | Cell membrane.  |

图片



Immunohistochemical analysis of paraffin-embedded human renal cancer tissue labeling ABCB5 with ab197406 at a 1/10 dilution.



Immunohistochemical analysis of paraffin-embedded human cervical cancer tissue labeling ABCB5 with ab197406 at a 1/10 dilution.

Immunohistochemistry (Formalin/PFA-fixed paraffin-embedded sections) - Anti-ABCB5 antibody (ab197406)

**Please note:** All products are "FOR RESEARCH USE ONLY. NOT FOR USE IN DIAGNOSTIC PROCEDURES"

### Our Abpromise to you: Quality guaranteed and expert technical support

---

- Replacement or refund for products not performing as stated on the datasheet
- Valid for 12 months from date of delivery
- Response to your inquiry within 24 hours
- We provide support in Chinese, English, French, German, Japanese and Spanish
- Extensive multi-media technical resources to help you
- We investigate all quality concerns to ensure our products perform to the highest standards

If the product does not perform as described on this datasheet, we will offer a refund or replacement. For full details of the Abpromise, please visit <https://www.abcam.cn/abpromise> or contact our technical team.

### Terms and conditions

---

- Guarantee only valid for products bought direct from Abcam or one of our authorized distributors