

Anti-6X His tag® antibody [RMH01] ab219465

重组

1 References 4 图像

概述

产品名称	Anti-6X His tag®抗体[RMH01]
描述	人单克隆抗体[RMH01] to 6X His tag®
宿主	Human
特异性	ab219465 reacts to recombinant proteins containing the 6X His tag® or 10X His tag® fused to either the amino or carboxy terminus. No cross reactivity with other endogenous protein in mammalian or bacteria cells.
经测试应用	适用于: ELISA, Sandwich ELISA, WB
种属反应性	与反应: Species independent
免疫原	Synthetic peptide (His-tag). (Mixture of a peptide with 6xHis-Tag at the N-terminus and another peptide with 6xHis-Tag at the C-terminus).
阳性对照	WB: 293T cells transfected with a DNA construct encoding His-Tag Histone H3 (K36M) protein; Sandwich ELISA: 293T cells transfected with a DNA construct encoding His-Tag Histone H3 (G34W) protein; purified HisTag-PCSK9 recombinant protein
常规说明	ab219465 is a Human-Rabbit chimeric antibody, made by fusion of the antigen binding region (variable domains of the heavy and light chains, VH and VL) of rabbit anti-HisTag monoclonal antibody (ab200537), with the constant domain of Human IgG1. The antibody is recognized only by an anti-Human IgG secondary antibody.

性能

形式	Liquid
存放说明	Shipped at 4°C. Store at +4°C short term (1-2 weeks). Upon delivery aliquot. Store at -20°C long term. Avoid freeze / thaw cycle.
存储溶液	Preservative: 0.09% Sodium azide Constituents: 50% Glycerol (glycerin, glycerine), 49% PBS
纯度	Protein A purified
纯化说明	ab219465 was purified from an animal origin-free culture supernatant.
克隆	单克隆

克隆编号

RMH01

同种型

IgG

应用

The Abpromise guarantee

Abpromise™承诺保证使用ab219465于以下的经测试应用

“应用说明”部分 下显示的仅为推荐的起始稀释度;实际最佳的稀释度/浓度应由使用者检定。

应用	Ab评论	说明
ELISA		Use at an assay dependent concentration.
Sandwich ELISA		Use at an assay dependent concentration.
WB		Use a concentration of 0.2 µg/ml.

靶标

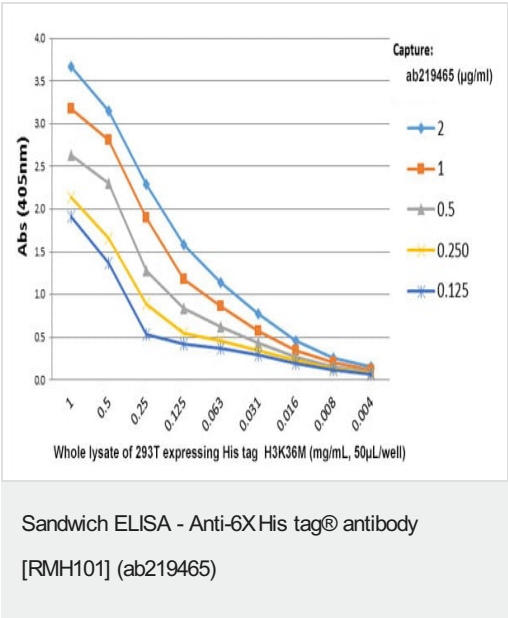
相关性

The H-H-H-H-H-H motif is used as a tag on many recombinant proteins to facilitate purification. His-tags can be fused to the amino- or carboxy- termini of proteins in transfected or transformed cells.

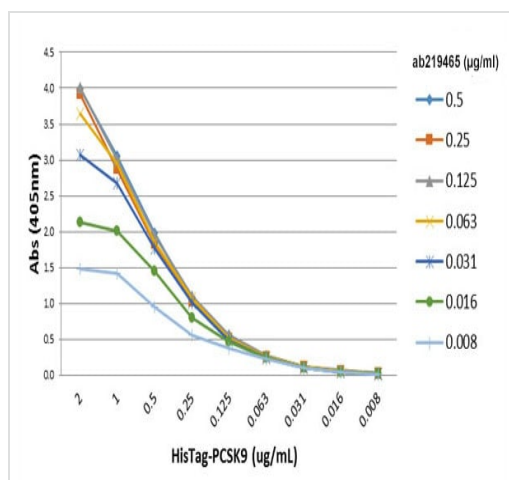
细胞定位

Depends upon the localization of the parent protein tagged with hexahistidine.

图片

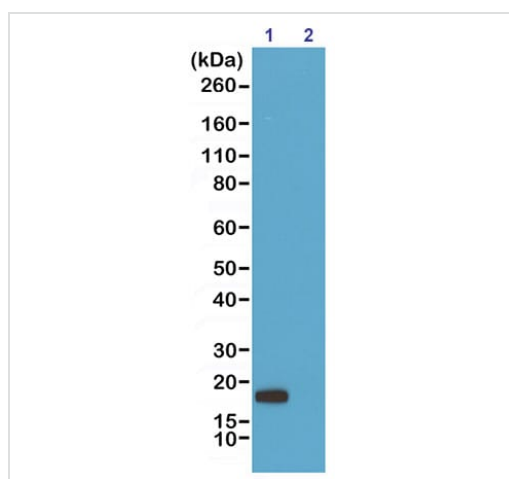


Sandwich ELISA performed on different amounts of whole lysate of 293T cells transfected with a DNA construct encoding HisTag Histone H3 (K36M) protein, using 50µL/well of different concentrations of ab219465 as the capture antibody. Anti-H3K36M rabbit monoclonal antibody (RM193) was used as the detection antibody, followed by an alkaline phosphatase conjugated anti-Rabbit IgG as the Secondary antibody.



ELISA - Anti-6X His tag® antibody [RMH101]
(ab219465)

A titer ELISA performed on purified HisTag-PCSK9 recombinant protein. A serial dilution of ab219465 was used as the primary antibody. An alkaline phosphatase conjugated anti-Human IgG as the secondary antibody



Western blot - Anti-6X His tag® antibody [RMH101]
(ab219465)

All lanes : Anti-6X His tag® antibody [RMH01] (ab219465) at 0.2 µg/ml

Lane 1 : 293T cells transfected with a DNA construct encoding His-Tag Histone H3 (G34W) protein

Lane 2 : 293T cells untransfected with a DNA construct encoding His-Tag Histone H3 (G34W) protein

Secondary

All lanes : HRP conjugated anti-Human IgG secondary antibody

Why choose a recombinant antibody?



Research with confidence
Consistent and reproducible results



Long-term and scalable supply
Recombinant technology



Success from the first experiment
Confirmed specificity



Ethical standards compliant
Animal-free production

Anti-6XHis tag® antibody [RMH01] (ab219465)

Please note: All products are "FOR RESEARCH USE ONLY. NOT FOR USE IN DIAGNOSTIC PROCEDURES"

Our Abpromise to you: Quality guaranteed and expert technical support

- Replacement or refund for products not performing as stated on the datasheet
- Valid for 12 months from date of delivery
- Response to your inquiry within 24 hours
- We provide support in Chinese, English, French, German, Japanese and Spanish
- Extensive multi-media technical resources to help you
- We investigate all quality concerns to ensure our products perform to the highest standards

If the product does not perform as described on this datasheet, we will offer a refund or replacement. For full details of the Abpromise, please visit <https://www.abcam.cn/abpromise> or contact our technical team.

Terms and conditions

- Guarantee only valid for products bought direct from Abcam or one of our authorized distributors