

Anti-4E-T antibody ab95030

3 图像

概述

| | |
|-------|---|
| 产品名称 | Anti-4E-T抗体 |
| 描述 | 兔多克隆抗体to 4E-T |
| 宿主 | Rabbit |
| 经测试应用 | 适用于: WB, IP, IHC-P |
| 种属反应性 | 与反应: Mouse, Human 预测可用于: Rat, Rabbit, Horse, Chicken, Guinea pig, Cow, Dog, Turkey, Pig, Xenopus laevis, Chimpanzee, Rhesus monkey, Gorilla, Orangutan, Xenopus tropicalis, Platypus  |
| 免疫原 | Synthetic peptide corresponding to Human 4E-T aa 925-985. |
| 阳性对照 | HeLa whole cell lysate, 293T whole cell lysate and mouse NIH3T3 whole cell lysate |
| 常规说明 | <p>The Life Science industry has been in the grips of a reproducibility crisis for a number of years. Abcam is leading the way in addressing this with our range of recombinant monoclonal antibodies and knockout edited cell lines for gold-standard validation. Please check that this product meets your needs before purchasing.</p> <p>If you have any questions, special requirements or concerns, please send us an inquiry and/or contact our Support team ahead of purchase. Recommended alternatives for this product can be found below, along with publications, customer reviews and Q&As</p> |

性能

| | |
|------|---|
| 形式 | Liquid |
| 存放说明 | Shipped at 4°C. Upon delivery aliquot and store at -20°C. Avoid freeze / thaw cycles. |
| 存储溶液 | pH: 7 Preservative: 0.09% Sodium azide Constituent: Tris citrate/phosphate |
| 纯度 | Immunogen affinity purified |
| 克隆 | 多克隆 |
| 同种型 | IgG |

应用

The Abpromise guarantee**Abpromise™**承诺保证使用ab95030于以下的经测试应用

“应用说明”部分 下显示的仅为推荐的起始稀释度;实际最佳的稀释度/浓度应由使用者检定。

| 应用 | Ab评论 | 说明 |
|-------|------|--|
| WB | | 1/1000. Predicted molecular weight: 108 kDa. |
| IP | | Use at 2-5 µg/mg of lysate. |
| IHC-P | | 1/500 - 1/2000. Perform heat mediated antigen retrieval with citrate buffer pH 6 before commencing with IHC staining protocol. |

靶标**功能**

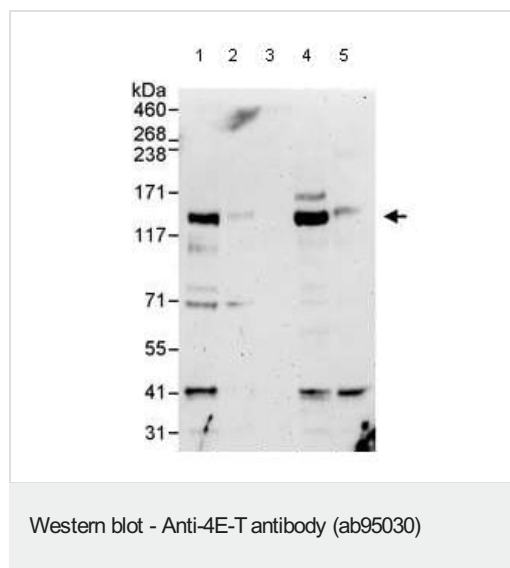
Nucleoplasmic shuttling protein. Mediates the nuclear import of EIF4E by a piggy-back mechanism.

组织特异性

Widely expressed.

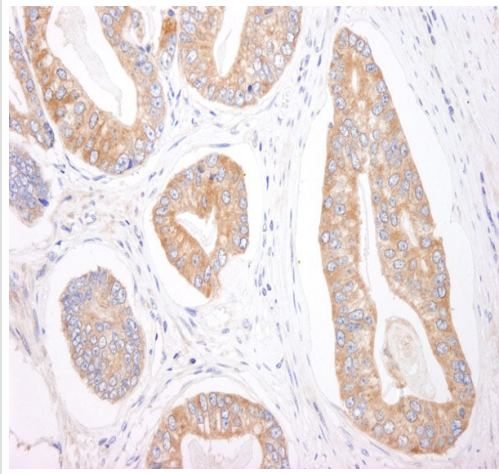
细胞定位

Cytoplasm. Nucleus. Predominantly cytoplasmic. Shuttles between the nucleus and the cytoplasm in a CRM1-dependent manner.

图片**All lanes** : Anti-4E-T antibody (ab95030) at 1 µg/ml**Lane 1** : HeLa whole cell lysate at 50 µg**Lane 2** : HeLa whole cell lysate at 15 µg**Lane 3** : HeLa whole cell lysate at 5 µg**Lane 4** : 293T whole cell lysate at 50 µg**Lane 5** : Mouse NIH3T3 whole cell lysate at 50 µg

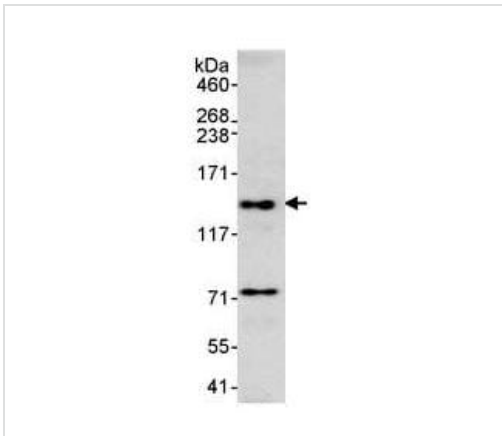
Developed using the ECL technique.

Predicted band size: 108 kDa**Exposure time:** 3 minutes



Immunohistochemistry (Formalin/PFA-fixed paraffin-embedded sections) - Anti-4E-T antibody (ab95030)

Immunohistochemistry (Formalin/PFA-fixed paraffin-embedded sections) analysis of human prostate carcinoma tissue labelling 4E-T with ab95030 at 1/1000 (1µg/ml). Detection: DAB.



Immunoprecipitation - Anti-4E-T antibody (ab95030)

Detection of 4E-T in immunoprecipitates of whole cell lysate from HeLa cells (1 mg for IP, 20% of IP loaded), using ab95030 at 3 µg/mg lysate for IP and at 1 µg/ml for subsequent Western blot.

Detection: Chemiluminescence with an exposure time of 30 seconds.

Please note: All products are "FOR RESEARCH USE ONLY. NOT FOR USE IN DIAGNOSTIC PROCEDURES"

Our Abpromise to you: Quality guaranteed and expert technical support

- Replacement or refund for products not performing as stated on the datasheet
- Valid for 12 months from date of delivery
- Response to your inquiry within 24 hours
- We provide support in Chinese, English, French, German, Japanese and Spanish

- Extensive multi-media technical resources to help you
- We investigate all quality concerns to ensure our products perform to the highest standards

If the product does not perform as described on this datasheet, we will offer a refund or replacement. For full details of the Abpromise, please visit <https://www.abcam.cn/abpromise> or contact our technical team.

Terms and conditions

- Guarantee only valid for products bought direct from Abcam or one of our authorized distributors