

# Epithelial-Mesenchymal Transition (Beta Catenin, Vimentin) Western Blot Cocktail ab157392

[2 References](#) [2 图像](#)

### 概述

产品名称	Epithelial-Mesenchymal Transition (Beta Catenin, Vimentin) Western Blot Cocktail
样品类型	Cell Lysate
种属反应性	<b>与反应:</b> Human <b>不与反应:</b> Mouse, Rat
产品概述	<p>This Epithelial-Mesenchymal Transition (EMT) western blot cocktail is designed to determine the relative abundance of canonical EMT markers. EMT is a process in which a cell transitions from an epithelial-like (attached, polarized) state to a mesenchymal-like (unattached, migratory) state and such transitions occur during development and metastasis. Underlying the morphological cell changes during EMT are transcription factor programs, biochemical cascades and alterations to the cytoskeleton. Beta-Catenin is a transcription factor in the Wnt signaling pathway and is involved in the regulation of cell adhesion; beta-Catenin is typically more abundant in epithelial-like cells. Vimentin is an intermediate filament typically found in non-epithelial and mesenchymal cells. Alpha Smooth Muscle Actin and GAPDH are also included in this cocktail as loading controls (Alpha Smooth Muscle Actin is reported to be more highly expressed in mesenchymal-like cells, but we find it to be widely expressed in transformed cell lines).</p> <p>These four readouts are easily resolved by western blot given their different molecular weights. Because this western blot cocktail is a mix of rabbit and mouse monoclonal primary antibodies. A secondary antibody cocktail of HRP conjugated antibodies (anti-mouse and anti-rabbit) is provided.</p> <p>Expected and observed MWs: Beta-Catenin 92kDa Vimentin 54kDa Smooth Muscle Actin 42kDa GAPDH 36kDa</p>
经测试应用	<b>适用于:</b> WB

### 性能

**存放说明** Store at -20°C. Please refer to protocols.

组件	200 µl
2500X HRP Conjugated Secondary Antibody Cocktail	1 vial
250X EMT WB Cocktail	1 vial

## 应用

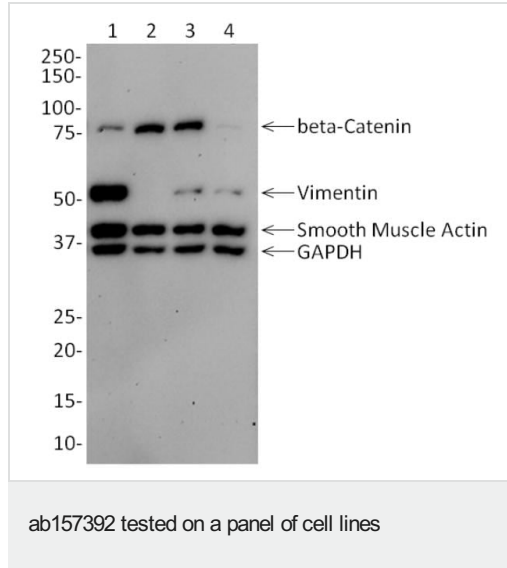
### The Abpromise guarantee

**Abpromise™**承诺保证使用ab157392于以下的经测试应用

“应用说明”部分下显示的仅为推荐的起始稀释度;实际最佳的稀释度/浓度应由使用者检定。

应用	Ab评论	说明
<b>WB</b>		Use at an assay dependent concentration. Expected and observed MWs: Beta-Catenin 92kDa Vimentin 54kDa Smooth Muscle Actin 42kDa GAPDH 36kDa

## 图片



Primary antibody: all lanes EMT WB cocktail (ab157392) diluted to 1X in 4% milk/PBS.

Lane 1. MDA-MB-231 cell lysate

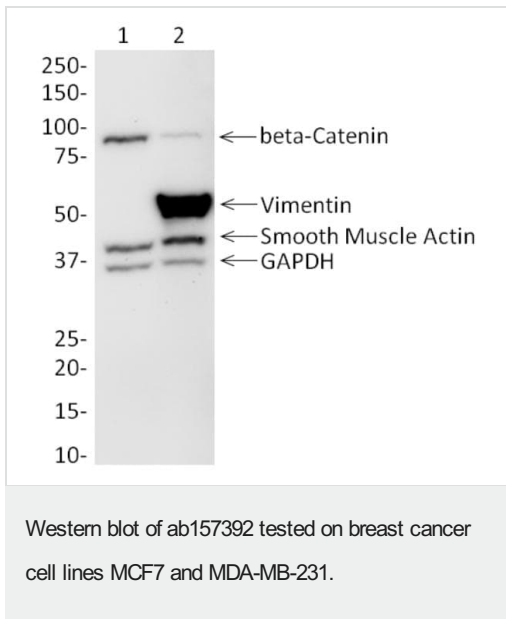
Lane 2. SH SY5Y cell lysate

Lane 3. HeLa cell lysate

Lane 4. Jurkat cell lysate.

All lysates loaded 20 µg per lane. Lysates were generated in RIPA lysis buffer ([ab156034](#)) and briefly boiled in sample buffer before loading on SDS-PAGE.

Secondary antibody: All lanes using the included HRP Conjugated Secondary Antibody Cocktail (included with ab157392) diluted to 1X in 5% milk/PBS.



MCF7 is epithelial-like and MDA-MB-231 cells are mesenchymal-like based on the relative expression of beta-Catenin and Vimentin between the cell lines.

Primary antibody: all lanes EMT WB cocktail diluted to 1X in 5% milk/PBS.

Lane 1. MCF7 cell lysate

Lane 2. MDA-MB-231 cell lysate

All lysates loaded 20 µg per lane. Lysates were generated in SDS lysis buffer and briefly boiled in sample buffer before loading on SDS-PAGE.

Secondary antibody: All lanes using the included HRP Conjugated Secondary Antibody Cocktail (included with ab157392) diluted to 1X in 5% milk/PBS.

**Please note:** All products are "FOR RESEARCH USE ONLY. NOT FOR USE IN DIAGNOSTIC PROCEDURES"

### Our Abpromise to you: Quality guaranteed and expert technical support

- Replacement or refund for products not performing as stated on the datasheet
- Valid for 12 months from date of delivery
- Response to your inquiry within 24 hours
- We provide support in Chinese, English, French, German, Japanese and Spanish
- Extensive multi-media technical resources to help you
- We investigate all quality concerns to ensure our products perform to the highest standards

If the product does not perform as described on this datasheet, we will offer a refund or replacement. For full details of the Abpromise, please visit <https://www.abcam.cn/abpromise> or contact our technical team.

### Terms and conditions

- Guarantee only valid for products bought direct from Abcam or one of our authorized distributors