

Cell Cycle (pCdk/pHH3/Actin) WB Cocktail ab136810

12 References 3 图像

概述

产品名称	Cell Cycle (pCdk/pHH3/Actin) WB Cocktail
种属反应性	与反应: Mouse, Human
产品概述	<p>The Cell Cycle western blot cocktail (ab136810) is designed to provide a rapid assessment of cell cycle distribution based on molecular markers for the G1/S and M phases of the cell cycle. This is a mixture of three specific rabbit monoclonal primary antibodies targeting phospho-cdk2 Tyr15, phospho Histone H3 Ser10 and beta-actin. Cyclin-dependent kinase 2 (Cdk2) is maintained in an inactive state in G1/S by inhibitory phosphorylation on Tyr15. Histone H3 is phosphorylated at Ser10 when chromosomes condense during mitosis. Hence, elevated phospho-cdk2 Tyr15 indicates G1/S arrested cells and elevated phospho Histone H3 Ser10 indicates M-phase arrested cells when compared to asynchronous cycling control cells. An anti-Actin antibody is included as a loading control. These three readouts are easily resolved by western blot given their different molecular weights.</p> <p><b>The recommended dilution for this cocktail is 1:250.</b></p>
经测试应用	适用于: WB

性能

存放说明 Store at -20°C. Please refer to protocols.

组件	200 µl
250X Cell Cycle WB Cocktail	1 x 200µl

应用

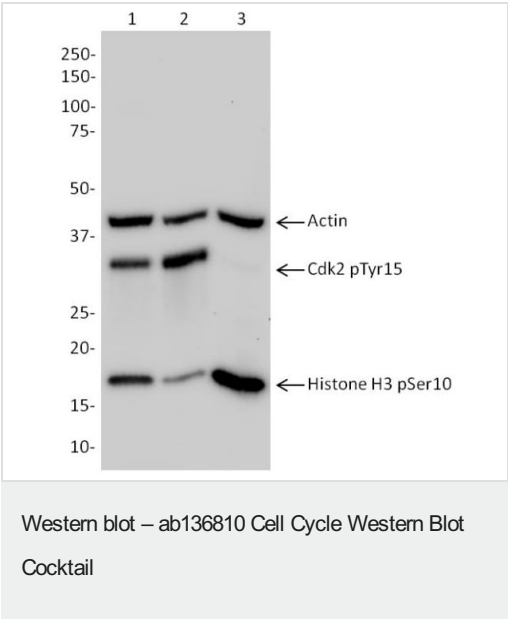
The Abpromise guarantee **Abpromise™**承诺保证使用ab136810于以下的经测试应用

“应用说明”部分 下显示的仅为推荐的起始稀释度;实际最佳的稀释度/浓度应由使用者检定。

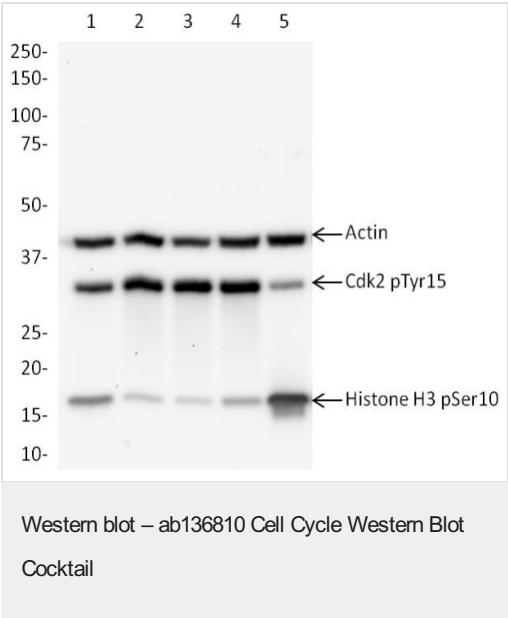
应用	Ab评论	说明

应用	Ab评论	说明
WB		Use at an assay dependent concentration. 1/250 dilution for primary antibody cocktail Suggested dilution buffer: 5% milk/PBS

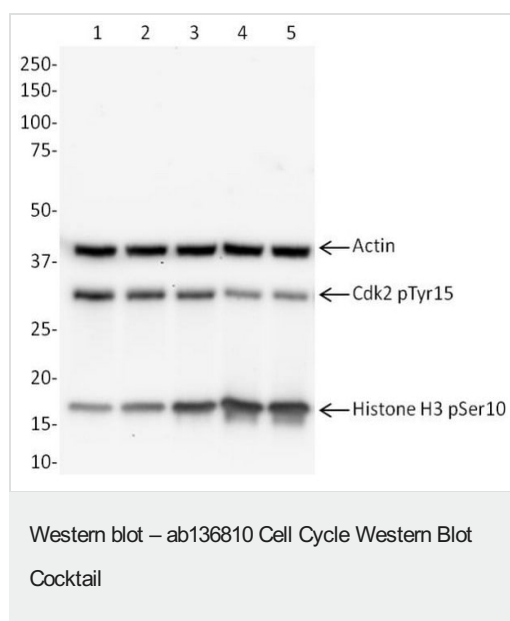
图片



Western blot – ab136810 Cell Cycle Western Blot Cocktail Cdk2 pTyr15 and Histone H3 pSer10 bands are present in asynchronous cells. Cdk2 pTyr15 is elevated in G1/S arrested cells. Conversely, Histone H3 pSer10 is elevated in G2/M arrested cells. Primary antibody: All lanes Cell 250X Cell Cycle WB Cocktail diluted to 1X in 4% milk/PBS. Lane 1: HeLa lysate; Untreated, asynchronous cells Lane 2: HeLa lysate; G1/S arrested cells (thymidine treatment) Lane 3: HeLa lysate; G2/M arrested cells (sequential thymidine and nocodazole treatments) All lysates at 15 µg per lane. Lysates are **ab136811** HeLa Cell Cycle Lysates Secondary antibody: All lanes anti-rabbit-HRP. Predicted band size: 42, 33, 17 kDa.



Western blot – ab136810 Cell Cycle Western Blot Cocktail Hydroxyurea, Camptothecin and Etoposide treatments cause a G1/S-like arrest as judged by the increase in Cdk2 pTyr15 and decrease in Histone H3 pSer10 bands relative to control. In contrast, Paclitaxel causes a G2/M like arrest judged by the decreased Cdk2 pTyr15 and increased Histone H3 pSer10 bands. Primary antibody: All lanes Cell 250X Cell Cycle WB Cocktail diluted to 1X in 4% milk/PBS. Lane 1: HeLa lysate; Control treatment Lane 2: HeLa lysate; 5 mM Hydroxyurea, 24 h treatment Lane 3: HeLa lysate; 5 µM Camptothecin, 24 h treatment Lane 4: HeLa lysate; 1.5 µM Etoposide, 24 h treatment Lane 5: HeLa lysate; 2000 nM Paclitaxel, 24 h treatment All lysates at 15 µg per lane. Secondary antibody: All lanes anti-rabbit-HRP. Predicted band size: 42, 33, 17 kDa.



Western blot – ab136810 Cell Cycle Western Blot Cocktail Cdk2 pTyr15 intensity decreases and Histone H3 pSer10 intensity increases as a function of Paclitaxel concentration. Equivalent protein loading is indicated by the equal actin intensity across samples. Primary antibody: All lanes Cell 250X Cell Cycle WB Cocktail diluted to 1X in 4% milk/PBS. Lane 1: HeLa lysate; Control treatment Lane 2: HeLa lysate; 0.25 nM Paclitaxel, 24 h treatment Lane 3: HeLa lysate; 5 nM Paclitaxel, 24 h treatment Lane 4: HeLa lysate; 100 nM Paclitaxel, 24 h treatment Lane 5: HeLa lysate; 2000 nM Paclitaxel, 24 h treatment All lysates at 15 µg per lane. Secondary antibody: All lanes anti-rabbit-HRP. Predicted band size: 42, 33, 17 kDa.

**Please note:** All products are "FOR RESEARCH USE ONLY. NOT FOR USE IN DIAGNOSTIC PROCEDURES"

### Our Abpromise to you: Quality guaranteed and expert technical support

- Replacement or refund for products not performing as stated on the datasheet
- Valid for 12 months from date of delivery
- Response to your inquiry within 24 hours
- We provide support in Chinese, English, French, German, Japanese and Spanish
- Extensive multi-media technical resources to help you
- We investigate all quality concerns to ensure our products perform to the highest standards

If the product does not perform as described on this datasheet, we will offer a refund or replacement. For full details of the Abpromise, please visit <https://www.abcam.cn/abpromise> or contact our technical team.

### Terms and conditions

- Guarantee only valid for products bought direct from Abcam or one of our authorized distributors