

Rat C Reactive Protein ELISA Kit (PTX1) ab108827

18 References 1 图像

概述

产品名称

检测方法

精确度

大鼠C Reactive蛋白ELISA试剂盒(PTX1)

Colorimetric

批次内

样品	n	Mean	SD	CV%
Overall				3.4%

批次间

样品	n	Mean	SD	CV%
Overall				8.5%

样品类型

检测类型

灵敏度

范围

回收率

检测时间

实验步骤

种属反应性

产品概述

Cell culture supernatant, Urine, Serum, Plasma

Sandwich (quantitative)

= 0.25 ng/ml

0.391 ng/ml - 25 ng/ml

95 %

3h 30m

Multiple steps standard assay

与反应: Rat

Abcam's C Reactive Protein (PTX1) Rat *in vitro* ELISA (Enzyme-Linked Immunosorbent Assay) kit is designed for the quantitative measurement of C Reactive Protein in urine, plasma, serum, and cell culture supernatants.

The entire kit may be stored at -20°C for long term storage before reconstitution - Avoid repeated freeze-thaw cycles.

平台 Microplate

性能

存放说明 Store at -20°C. Please refer to protocols.

组件	1 x 96 tests
100X Streptavidin-Peroxidase Conjugate	1 x 80µl
10X Diluent M Concentrate	1 x 30ml
20X Wash Buffer Concentrate	2 x 30ml
50X Biotinylated Rat C Reactive Protein Antibody	1 x 120µl
C Reactive Protein Microplate (12 x 8 well strips)	1 unit
C Reactive Protein Standard	1 vial
Chromogen Substrate	1 x 7ml
Sealing Tapes	3 units
Stop Solution	1 x 11ml

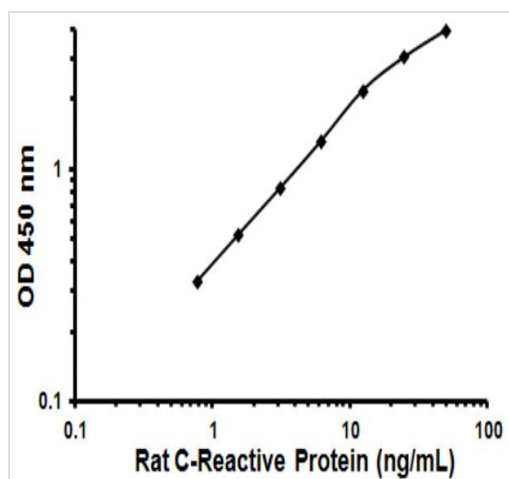
功能 Displays several functions associated with host defense: it promotes agglutination, bacterial capsular swelling, phagocytosis and complement fixation through its calcium-dependent binding to phosphorylcholine. Can interact with DNA and histones and may scavenge nuclear material released from damaged circulating cells.

组织特异性 Found in plasma.

序列相似性 Belongs to the pentaxin family.
Contains 1 pentaxin domain.

细胞定位 Secreted.

图片



Typical Standard Curve

Representative Standard Curve using ab108827.

Please note: All products are "FOR RESEARCH USE ONLY. NOT FOR USE IN DIAGNOSTIC PROCEDURES"

Our Abpromise to you: Quality guaranteed and expert technical support

- Replacement or refund for products not performing as stated on the datasheet
- Valid for 12 months from date of delivery
- Response to your inquiry within 24 hours
- We provide support in Chinese, English, French, German, Japanese and Spanish
- Extensive multi-media technical resources to help you
- We investigate all quality concerns to ensure our products perform to the highest standards

If the product does not perform as described on this datasheet, we will offer a refund or replacement. For full details of the Abpromise, please visit <https://www.abcam.cn/abpromise> or contact our technical team.

Terms and conditions

- Guarantee only valid for products bought direct from Abcam or one of our authorized distributors