

Mouse Von Willebrand Factor A2 ELISA Kit, Fluorescent  
ab229397

重组 CatchPoint® SimpleStep ELISA®

1 References 5 图像

概述

产品名称

检测方法

精确度

样品类型

检测类型

灵敏度

范围

回收率

小鼠Von Willebrand Factor A2 ELISA试剂盒, Fluorescent

Fluorescent

批次内

样品	n	Mean	SD	CV%
Plasma	5			5.3%

批次间

样品	n	Mean	SD	CV%
Plasma	3			13.3%

Cell culture supernatant, Serum, Hep Plasma, EDTA Plasma, Cit plasma

Sandwich (quantitative)

7.1 pg/ml

13.67 pg/ml - 7000 pg/ml

特定样本回收率

样品类型	平均%	范围
Serum	83.6	80.2% - 89.7%
Hep Plasma	82.2	78.8% - 86.7%
EDTA Plasma	94.4	88.2% - 98.3%
Cit plasma	86.3	82.7% - 90.3%
serum free media	79	70.9% - 83.8%

检测时间	1h 30m
实验步骤	One step assay
种属反应性	与反应: Mouse 不与反应: Goat, Pig
产品概述	Von Willebrand Factor A2 <i>in vitro</i> CatchPoint® SimpleStep ELISA® (Enzyme-Linked Immunosorbent Assay) kit is designed for the quantitative measurement of Von Willebrand Factor A2 protein in mouse serum, plasma, and cell culture supernatant samples.

This CatchPoint SimpleStep ELISA kit has been **optimized for Molecular Devices Microplate Readers**. Click [here](#) for a list of recommended Microplate Readers.

If using a Molecular Devices' plate reader supported by SoftMax® Pro software, a preconfigured protocol for these CatchPoint SimpleStep ELISA Kits is available with all the protocol and analysis settings at [www.softmaxpro.org](http://www.softmaxpro.org).

The CatchPoint® SimpleStep ELISA® employs an affinity tag labeled capture antibody and a reporter conjugated detector antibody which immunocapture the sample analyte in solution. This entire complex (capture antibody/analyte/detector antibody) is in turn immobilized via immunoaffinity of an anti-tag antibody coating the well. To perform the assay, samples or standards are added to the wells, followed by the antibody mix. After incubation, the wells are washed to remove unbound material. CatchPoint HRP Development Solution containing the Stoplight Red Substrate is added. During incubation, the substrate is catalyzed by HRP generating a fluorescent product. Signal is generated proportionally to the amount of bound analyte and the intensity is measured in a fluorescence plater reader at 530/570/590 nm Excitation/Cutoff/Emission.

**说明**

vWF A2 and vWF (von Willebrand Factor) are distinct proteins with non-overlapping amino acid sequences generated by proteolytic cleavage from the same precursor protein during intracellular processing. vWF is important in the maintenance of hemostasis; it is a glycoprotein that circulates in plasma as a series of high molecular weight multimers and mediates the adhesion of platelets to exposed sub-endothelium. vWF is synthesized in endothelial cells and megakaryocytes. vWF A2 is found in plasma and platelets, from which they are released by their activation including thrombin. Both vWF and vWF A2 are deficient in von Willebrand's disease.

**平台** Pre-coated microplate (12 x 8 well strips)

**性能**

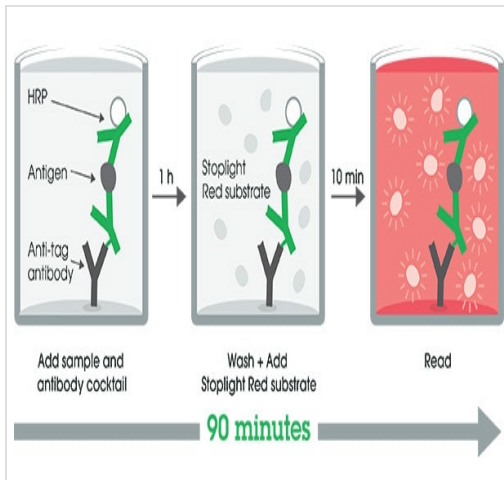
**存放说明** Store at +4°C. Please refer to protocols.

组 件	1 x 96 tests
100X Stoplight Red Substrate	1 x 120µl
10X Mouse vWF A2 Capture Antibody	1 x 600µl
10X Mouse vWF A2 Detector Antibody	1 x 600µl
10X Wash Buffer PT (ab206977)	1 x 20ml
500X Hydrogen Peroxide (H2O2, 3%)	1 x 50µl

组件	1 x 96 tests
Antibody Diluent 4BR	1 x 6ml
Plate Seals	1 unit
Sample Diluent NS (ab193972)	1 x 50ml
SimpleStep Pre-Coated Black 96-Well Microplate	1 unit
Stoplight Red Substrate Buffer	1 x 12ml
Mouse vWF A2 Lyophilized Recombinant Protein	2 vials

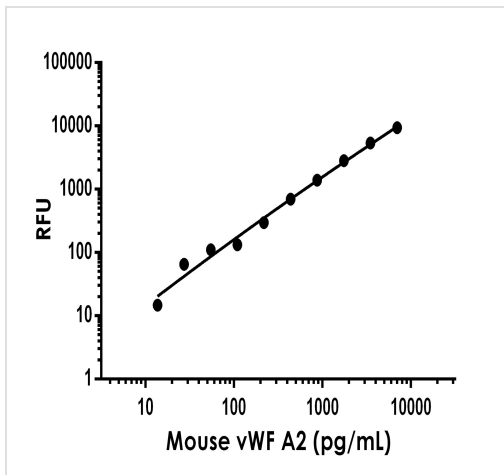
<b>功能</b>	Important in the maintenance of hemostasis, it promotes adhesion of platelets to the sites of vascular injury by forming a molecular bridge between sub-endothelial collagen matrix and platelet-surface receptor complex GPIb-IX-V. Also acts as a chaperone for coagulation factor VIII, delivering it to the site of injury, stabilizing its heterodimeric structure and protecting it from premature clearance from plasma.
<b>组织特异性</b>	Plasma.
<b>疾病相关</b>	Defects in VWF are the cause of von Willebrand disease (VWD) [MIM:277480]. VWD defines a group of hemorrhagic disorders in which the von Willebrand factor is either quantitatively or qualitatively abnormal resulting in altered platelet function. Symptoms vary depending on severity and disease type but may include prolonged bleeding time, deficiency of factor VIII and impaired platelet adhesion. Type I von Willebrand disease is the most common form and is characterized by partial quantitative plasmatic deficiency of an otherwise structurally and functionally normal Willebrand factor; type II is associated with a qualitative deficiency and functional anomalies of the Willebrand factor; type III is the most severe form and is characterized by total or near-total absence of Willebrand factor in the plasma and cellular compartments, also leading to a profound deficiency of plasmatic factor VIII.
<b>序列相似性</b>	Contains 1 CTCK (C-terminal cystine knot-like) domain. Contains 4 TIL (trypsin inhibitory-like) domains. Contains 3 VWFA domains. Contains 3 VWFC domains. Contains 4 VWFD domains.
<b>结构域</b>	The von Willebrand antigen 2 is required for multimerization of VWF and for its targeting to storage granules.
<b>翻译后修饰</b>	All cysteine residues are involved in intrachain or interchain disulfide bonds. N- and O-glycosylated.
<b>细胞定位</b>	Secreted. Secreted > extracellular space > extracellular matrix. Localized to storage granules.

## 图片



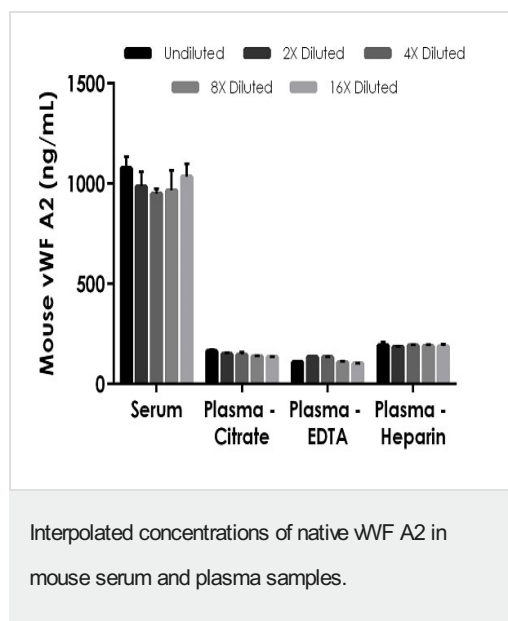
Other - Mouse Von Willebrand Factor A2 ELISA Kit,  
Fluorescent (ab229397)

SimpleStep ELISA technology allows the formation of the antibody-antigen complex in one single step, reducing assay time to 90 minutes. Add samples or standards and antibody mix to wells all at once, incubate, wash, and add your final substrate. See protocol for a detailed step-by-step guide.

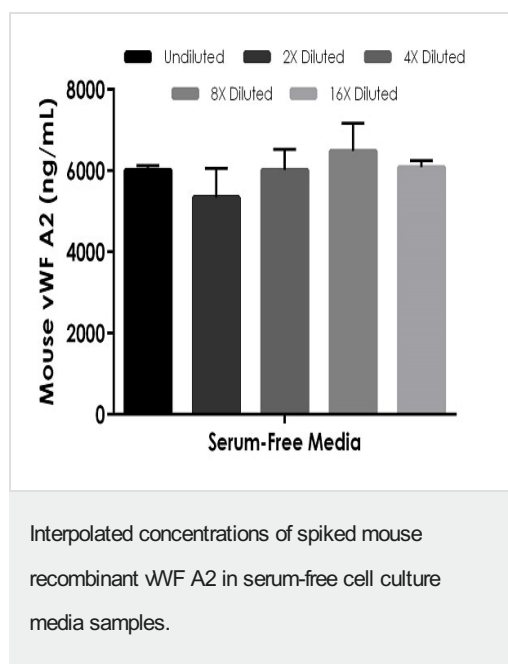


Example of mouse Von Willebrand Factor A2  
standard curve in Sample Diluent NS

Background-subtracted data values (mean  $\pm$  SD) are graphed.



The concentrations of vWF A2 were measured in duplicates, interpolated from the vWF A2 standard curves and corrected for sample dilution. Undiluted samples are as follows: serum 0.75 %, plasma (citrate) 3.5 %, plasma (EDTA) 7.0 %, plasma (heparin) 3.5 %. The interpolated dilution factor corrected values are plotted (mean  $\pm$  SD, n=2). The mean vWF A2 concentration was determined to be 1003 ng/mL in serum, 146 ng/mL in plasma (citrate) 118 ng/mL in plasma (EDTA) and 190 ng/mL in plasma (heparin).



The concentrations of vWF A2 were measured in duplicates, interpolated from the vWF A2 standard curves and corrected for sample dilution. Undiluted samples are as follows: 7,000 pg/mL of vWF A2 in 100% serum-free cell culture media. The interpolated dilution factor corrected values are plotted (mean  $\pm$  SD, n=2). The mean spiked vWF A2 concentration was determined to be 5962 pg/mL in serum-free cell culture media.

Powered by  
recombinant antibodies



**Research with confidence**  
Consistent and reproducible results



**Long-term and scalable supply**  
Recombinant technology



**Success from the first experiment**  
Confirmed specificity



**Ethical standards compliant**  
Animal-free production

Sandwich ELISA - Mouse Von Willebrand Factor A2  
ELISA Kit, Fluorescent (ab229397)

To learn more about the advantages of recombinant antibodies see [here](#).

**Please note:** All products are "FOR RESEARCH USE ONLY. NOT FOR USE IN DIAGNOSTIC PROCEDURES"

### Our Abpromise to you: Quality guaranteed and expert technical support

---

- Replacement or refund for products not performing as stated on the datasheet
- Valid for 12 months from date of delivery
- Response to your inquiry within 24 hours
- We provide support in Chinese, English, French, German, Japanese and Spanish
- Extensive multi-media technical resources to help you
- We investigate all quality concerns to ensure our products perform to the highest standards

If the product does not perform as described on this datasheet, we will offer a refund or replacement. For full details of the Abpromise, please visit <https://www.abcam.cn/abpromise> or contact our technical team.

### Terms and conditions

---

- Guarantee only valid for products bought direct from Abcam or one of our authorized distributors