

### Mouse Von Willebrand Factor A2 ELISA Kit ab208980

**重组** SimpleStep ELISA

★★★★★ [1 Abreviews](#) [2 References](#) [6 图像](#)

#### 概述

**产品名称** 小鼠Von Willebrand Factor A2 ELISA试剂盒

**检测方法** Colorimetric

**精确度** 批次内

样品	n	Mean	SD	CV%
Mouse plasma	5			5.3%

批次间

样品	n	Mean	SD	CV%
Mouse plasma	3			13.3%

**样品类型** Cell culture supernatant, Serum, Hep Plasma, EDTA Plasma, Cit plasma

**检测类型** Sandwich (quantitative)

**灵敏度** 37 pg/ml

**范围** 109.38 pg/ml - 7000 pg/ml

**回收率** 特定样本回收率

样品类型	平均%	范围
Serum	83.6	80.2% - 89.7%
Hep Plasma	82.2	78.8% - 86.7%
EDTA Plasma	94.4	88.2% - 98.3%
Cit plasma	86.3	82.7% - 90.3%
serum free media	79	70.9% - 83.8%

**检测时间** 1h 30m

**实验步骤** One step assay

## 种属反应性

与反应: Mouse

不与反应: Goat, Pig

## 产品概述

Mouse Von Willebrand Factor A2 ELISA Kit (ab208980) is a single-wash 90 min sandwich ELISA designed for the quantitative measurement of Von Willebrand Factor A2 protein in cit plasma, edta plasma, hep plasma, serum, and cell culture supernatant. It uses our proprietary SimpleStep ELISA® technology. Quantitate Mouse Von Willebrand Factor A2 with 37 pg/ml sensitivity.

SimpleStep ELISA® technology employs capture antibodies conjugated to an affinity tag that is recognized by the monoclonal antibody used to coat our SimpleStep ELISA® plates. This approach to sandwich ELISA allows the formation of the antibody-analyte sandwich complex in a single step, significantly reducing assay time. See the SimpleStep ELISA® protocol summary in the image section for further details. Our SimpleStep ELISA® technology provides several benefits:

- Single-wash protocol reduces assay time to 90 minutes or less
- High sensitivity, specificity and reproducibility from superior antibodies
- Fully validated in biological samples
- 96-wells plate breakable into 12 x 8 wells strips

A 384-well SimpleStep ELISA® microplate ([ab203359](#)) is available to use as an alternative to the 96-well microplate provided with SimpleStep ELISA® kits.

## 说明

vWF A2 and vWF (von Willebrand Factor) are distinct proteins with non-overlapping amino acid sequences generated by proteolytic cleavage from the same precursor protein during intracellular processing. vWF is important in the maintenance of hemostasis; it is a glycoprotein that circulates in plasma as a series of high molecular weight multimers and mediates the adhesion of platelets to exposed sub-endothelium. vWF is synthesized in endothelial cells and megakaryocytes. vWF A2 is found in plasma and platelets, from which they are released by their activation including thrombin. Both vWF and vWF A2 are deficient in von Willebrand's disease.

## 平台

Microplate (12 x 8 well strips)

## 性能

### 存放说明

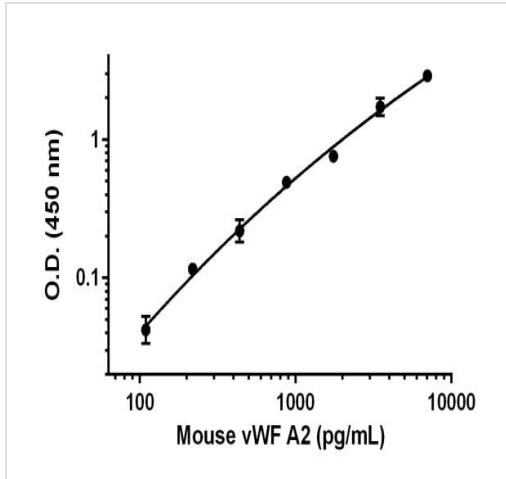
Store at +4°C. Please refer to protocols.

组件	1 x 96 tests
10X Mouse vWF A2 Capture Antibody	1 x 600µl
10X Mouse vWF A2 Detector Antibody	1 x 600µl
10X Wash Buffer PT (ab206977)	1 x 20ml
Antibody Diluent 4BR	1 x 6ml
Plate Seals	1 unit

组件	1 x 96 tests
Sample Diluent NS (ab193972)	1 x 50ml
SimpleStep Pre-Coated 96-Well Microplate (ab206978)	1 unit
Stop Solution	1 x 12ml
TMB Development Solution	1 x 12ml
Mouse vWF A2 Lyophilized Recombinant Protein	2 vials

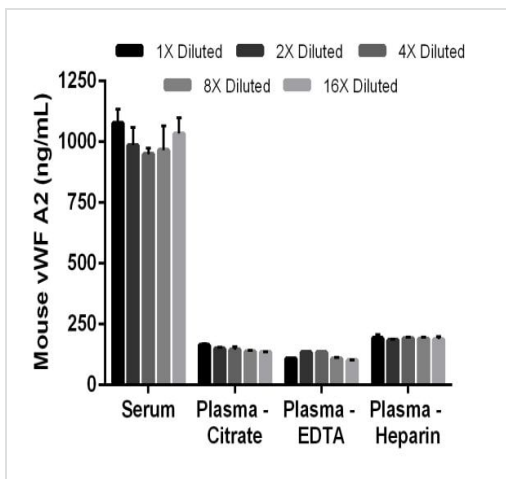
<b>功能</b>	Important in the maintenance of hemostasis, it promotes adhesion of platelets to the sites of vascular injury by forming a molecular bridge between sub-endothelial collagen matrix and platelet-surface receptor complex GPIb-IX-V. Also acts as a chaperone for coagulation factor VIII, delivering it to the site of injury, stabilizing its heterodimeric structure and protecting it from premature clearance from plasma.
<b>组织特异性</b>	Plasma.
<b>疾病相关</b>	Defects in VWF are the cause of von Willebrand disease (VWD) [MIM:277480]. VWD defines a group of hemorrhagic disorders in which the von Willebrand factor is either quantitatively or qualitatively abnormal resulting in altered platelet function. Symptoms vary depending on severity and disease type but may include prolonged bleeding time, deficiency of factor VIII and impaired platelet adhesion. Type I von Willebrand disease is the most common form and is characterized by partial quantitative plasmatic deficiency of an otherwise structurally and functionally normal Willebrand factor; type II is associated with a qualitative deficiency and functional anomalies of the Willebrand factor; type III is the most severe form and is characterized by total or near-total absence of Willebrand factor in the plasma and cellular compartments, also leading to a profound deficiency of plasmatic factor VIII.
<b>序列相似性</b>	Contains 1 CTCK (C-terminal cystine knot-like) domain. Contains 4 TIL (trypsin inhibitory-like) domains. Contains 3 VWFA domains. Contains 3 VWFC domains. Contains 4 VWFD domains.
<b>结构域</b>	The von Willebrand antigen 2 is required for multimerization of vWF and for its targeting to storage granules.
<b>翻译后修饰</b>	All cysteine residues are involved in intrachain or interchain disulfide bonds. N- and O-glycosylated.
<b>细胞定位</b>	Secreted. Secreted > extracellular space > extracellular matrix. Localized to storage granules.

## 图片



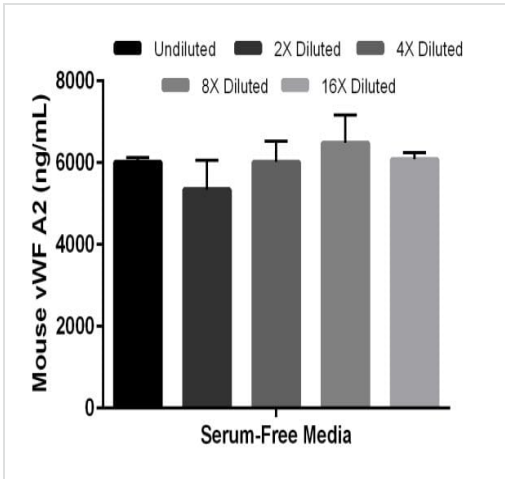
Background-subtracted data values (mean +/- SD) are graphed.

Example of mouse vWF A2 standard curve.



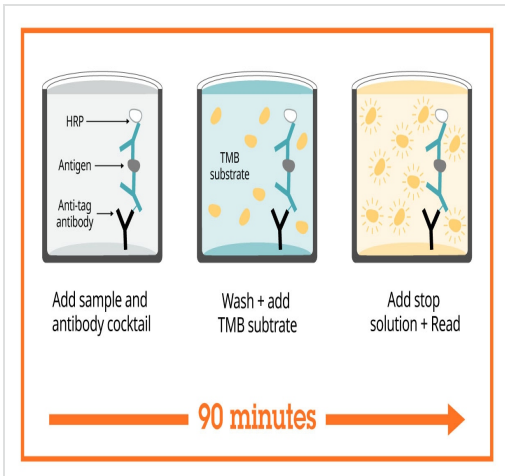
The concentrations of vWF A2 were measured in duplicates, interpolated from the vWF A2 standard curves and corrected for sample dilution. Undiluted samples are as follows: serum 0.75 %, plasma (citrate) 3.5 %, plasma (EDTA) 7.0 %, plasma (heparin) 3.5 %. The interpolated dilution factor corrected values are plotted (mean +/- SD, n=2). The mean vWF A2 concentration was determined to be 1003 ng/mL in serum, 146 ng/mL in plasma (citrate) 118 ng/mL in plasma (EDTA) and 190 ng/mL in plasma (heparin).

Interpolated concentrations of native vWF A2 in mouse serum and plasma samples.



Interpolated concentrations of spiked mouse recombinant vWF A2 in serum-free cell culture media samples

The concentrations of vWF A2 were measured in duplicates, interpolated from the vWF A2 standard curves and corrected for sample dilution. Undiluted samples are as follows: 7,000 pg/mL of vWF A2 in 100% serum-free cell culture media. The interpolated dilution factor corrected values are plotted (mean +/- SD, n=2). The mean spiked vWF A2 concentration was determined to be 5962 pg/mL in serum-free cell culture media.



SimpleStep ELISA technology allows the formation of the antibody-antigen complex in one single step, reducing assay time to 90 minutes. Add samples or standards and antibody mix to wells all at once, incubate, wash, and add your final substrate. See protocol for a detailed step-by-step guide.

Sandwich ELISA - Mouse Von Willebrand Factor A2 ELISA Kit (ab208980)

Powered by  
recombinant antibodies



**Research with confidence**  
Consistent and reproducible results



**Long-term and scalable supply**  
Recombinant technology



**Success from the first experiment**  
Confirmed specificity



**Ethical standards compliant**  
Animal-free production

Sandwich ELISA - Mouse Von Willebrand Factor A2  
ELISA Kit (ab208980)

To learn more about the advantages of recombinant antibodies see [here](#).

Get more done with  
SimpleStep ELISA



**Easy to use**  
Single-wash 90-minute protocol



**Flexible**  
Matched antibody pairs available



**Precision antibodies**  
High sensitivity, specificity and reproducibility



**Scalable**  
Now in 10-pack and 384-well formats

Sandwich ELISA - Mouse Von Willebrand Factor A2  
ELISA Kit (ab208980)

To learn more about the advantages of SimpleStep ELISA<sup>®</sup> kits see [here](#).

**Please note:** All products are "FOR RESEARCH USE ONLY. NOT FOR USE IN DIAGNOSTIC PROCEDURES"

### Our Abpromise to you: Quality guaranteed and expert technical support

- Replacement or refund for products not performing as stated on the datasheet
- Valid for 12 months from date of delivery
- Response to your inquiry within 24 hours
- We provide support in Chinese, English, French, German, Japanese and Spanish
- Extensive multi-media technical resources to help you

- We investigate all quality concerns to ensure our products perform to the highest standards

If the product does not perform as described on this datasheet, we will offer a refund or replacement. For full details of the Abpromise, please visit <https://www.abcam.cn/abpromise> or contact our technical team.

#### **Terms and conditions**

---

- Guarantee only valid for products bought direct from Abcam or one of our authorized distributors