

Mouse TIMP2 ELISA Kit ab227893

重组 SimpleStep ELISA

6 图像

概述

产品名称 小鼠TIMP2 ELISA试剂盒

检测方法 Colorimetric

| 批次内   |   |      |    |     |
|-------|---|------|----|-----|
| 样品    | n | Mean | SD | CV% |
| Serum | 5 |      |    | 3%  |

| 批次间   |   |      |    |     |
|-------|---|------|----|-----|
| 样品    | n | Mean | SD | CV% |
| Serum | 3 |      |    | 5%  |

样品类型 Cell culture supernatant, Serum, Hep Plasma, Cit plasma

检测类型 Sandwich (quantitative)

灵敏度 21 pg/ml

范围 47 pg/ml - 3000 pg/ml

| 特定样本回收率            |     |             |
|--------------------|-----|-------------|
| 样品类型               | 平均% | 范围          |
| Serum              | 99  | 92% - 103%  |
| Cell culture media | 118 | 116% - 119% |
| Hep Plasma         | 103 | 102% - 105% |
| Cit plasma         | 94  | 86% - 100%  |

检测时间 1h 30m

实验步骤 One step assay

种属反应性 与反应: Mouse

## 产品概述

### 不与反应: Cow

Mouse TIMP2 ELISA Kit (ab227893) is a single-wash 90 min sandwich ELISA designed for the quantitative measurement of TIMP2 protein in cell culture supernatant, cit plasma, hep plasma, and serum. It uses our proprietary SimpleStep ELISA® technology. Quantitate Mouse TIMP2 with 21 pg/ml sensitivity.

SimpleStep ELISA® technology employs capture antibodies conjugated to an affinity tag that is recognized by the monoclonal antibody used to coat our SimpleStep ELISA® plates. This approach to sandwich ELISA allows the formation of the antibody-analyte sandwich complex in a single step, significantly reducing assay time. See the SimpleStep ELISA® protocol summary in the image section for further details. Our SimpleStep ELISA® technology provides several benefits:

- Single-wash protocol reduces assay time to 90 minutes or less
- High sensitivity, specificity and reproducibility from superior antibodies
- Fully validated in biological samples
- 96-wells plate breakable into 12 x 8 wells strips

A 384-well SimpleStep ELISA® microplate (**ab203359**) is available to use as an alternative to the 96-well microplate provided with SimpleStep ELISA® kits.

## 说明

Abcam has not and does not intend to apply for the REACH Authorisation of customers' uses of products that contain European Authorisation list (Annex XIV) substances.

It is the responsibility of our customers to check the necessity of application of REACH Authorisation, and any other relevant authorisations, for their intended uses.

## 平台

Pre-coated microplate (12 x 8 well strips)

## 性能

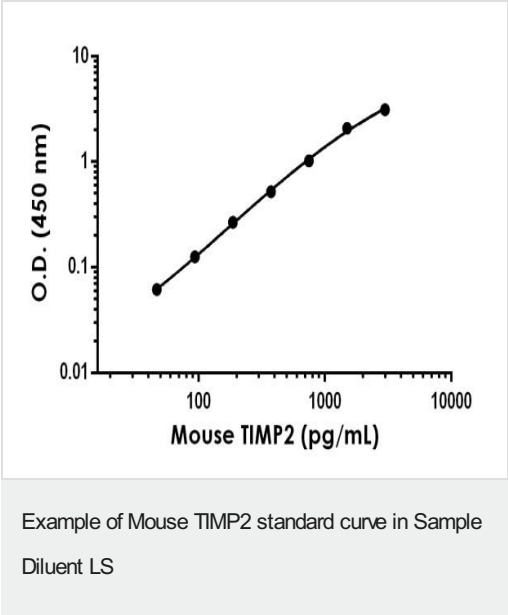
### 存放说明

Store at +4°C. Please refer to protocols.

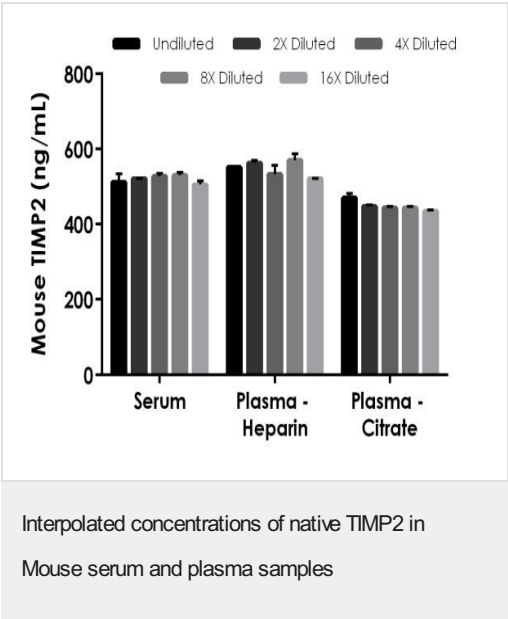
| 组件  | 1 x 96 tests |
|---|--------------|
| 10X Wash Buffer PT (ab206977)                       | 1 x 20ml     |
| Antibody Diluent BAR                                | 1 x 6ml      |
| 10X Mouse TIMP2 Capture Antibody                    | 1 x 600µl    |
| Mouse TIMP2 Lyophilized Recombinant Protein         | 2 vials      |
| 10X MouseTIMP2 Detector Antibody                    | 1 x 600µl    |
| Plate Seals   | 1 unit       |
| Sample Diluent LS                                   | 1 x 50ml     |
| SimpleStep Pre-Coated 96-Well Microplate (ab206978) | 1 unit       |
| Stop Solution                                       | 1 x 12ml     |

|                          |  |
|--------------------------|--|
| 组件                       | 1 x 96 tests   |
| TMB Development Solution | 1 x 12ml   |
| 功能                       | Complexes with metalloproteinases (such as collagenases) and irreversibly inactivates them by binding to their catalytic zinc cofactor. Known to act on MMP-1, MMP-2, MMP-3, MMP-7, MMP-8, MMP-9, MMP-10, MMP-13, MMP-14, MMP-15, MMP-16 and MMP-19. |
| 序列相似性                    | Belongs to the protease inhibitor I35 (TIMP) family.<br>Contains 1 NTR domain.   |
| 翻译后修饰                    | The activity of TIMP2 is dependent on the presence of disulfide bonds.   |
| 细胞定位                     | Secreted.  |

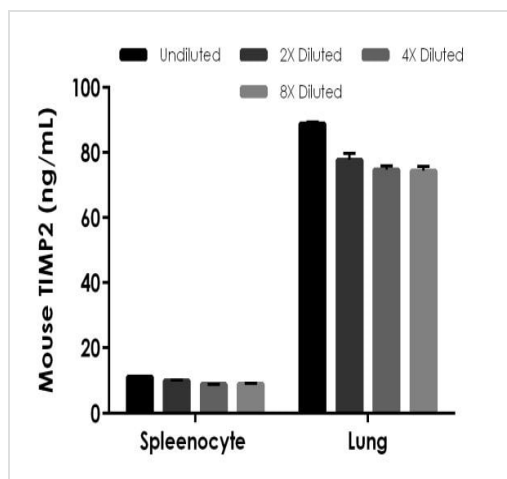
图片



Background-subtracted data values (mean +/- SD) are graphed.



The concentrations of TIMP2 were measured in duplicates, interpolated from the TIMP2 standard curves and corrected for sample dilution. Undiluted samples are as follows: serum 1:200, plasma (heparin) 1:200, and plasma (citrate) 1:200. The interpolated dilution factor corrected values are plotted (mean +/- SD, n=2). The mean TIMP2 concentration was determined to be 519 ng/mL in serum, 548 ng/mL in plasma (heparin) and 448 ng/mL in plasma (citrate).



Interpolated concentrations of native TIMP2 in  
Mouse cell culture supernatant samples

The concentrations of TIMP2 were measured in duplicates, interpolated from the TIMP2 standard curves and corrected for sample dilution. Undiluted samples are as follows: spleenocyte cell culture supernatant 25% and mouse lung cell culture supernatant 3%. The interpolated dilution factor corrected values are plotted (mean  $\pm$  SD,  $n=2$ ). The mean TIMP2 concentration was determined to be 9.8 ng/mL in spleenocyte cell culture supernatant and 78.9 ng/mL in lung supernatant.

Powered by  
recombinant antibodies

**Research with confidence**  
Consistent and reproducible results

**Long-term and scalable supply**  
Recombinant technology

**Success from the first experiment**  
Confirmed specificity

**Ethical standards compliant**  
Animal-free production

Sandwich ELISA - Mouse TIMP2 ELISA Kit  
(ab227893)

To learn more about the advantages of recombinant antibodies see [here](#).

SimpleStep ELISA process:

- Add sample and antibody cocktail
- Wash + add TMB substrate
- Add stop solution + Read

90 minutes

Sandwich ELISA - Mouse TIMP2 ELISA Kit  
(ab227893)

SimpleStep ELISA technology allows the formation of the antibody-antigen complex in one single step, reducing assay time to 90 minutes. Add samples or standards and antibody mix to wells all at once, incubate, wash, and add your final substrate. See protocol for a detailed step-by-step guide.

**Get more done with  
SimpleStep ELISA**



**Easy to use**

Single-wash 90-minute  
protocol



**Flexible**

Matched antibody pairs  
available



**Precision antibodies**

High sensitivity, specificity  
and reproducibility



**Scalable**

Now in 10-pack and  
384-well formats

Sandwich ELISA - Mouse TIMP2 ELISA Kit  
(ab227893)

To learn more about the advantages of SimpleStep ELISA® kits  
see [here](#).

**Please note:** All products are "FOR RESEARCH USE ONLY. NOT FOR USE IN DIAGNOSTIC PROCEDURES"

### Our Abpromise to you: Quality guaranteed and expert technical support

---

- Replacement or refund for products not performing as stated on the datasheet
- Valid for 12 months from date of delivery
- Response to your inquiry within 24 hours
- We provide support in Chinese, English, French, German, Japanese and Spanish
- Extensive multi-media technical resources to help you
- We investigate all quality concerns to ensure our products perform to the highest standards

If the product does not perform as described on this datasheet, we will offer a refund or replacement. For full details of the Abpromise, please visit <https://www.abcam.cn/abpromise> or contact our technical team.

### Terms and conditions

---

- Guarantee only valid for products bought direct from Abcam or one of our authorized distributors