

Mouse Myoglobin ELISA Kit ab210965

重组 SimpleStep ELISA

5 References 7 图像

概述

产品名称

小鼠Myoglobin ELISA试剂盒

检测方法

Colorimetric

精确度

批次内

样品	n	Mean	SD	CV%
Serum	8			6.1%

批次间

样品	n	Mean	SD	CV%
Serum	3			4.8%

样品类型

Cell culture supernatant, Serum, Plasma, Cell culture extracts, Tissue Extracts

检测类型

Sandwich (quantitative)

灵敏度

9.4 pg/ml

范围

15.62 pg/ml - 1000 pg/ml

回收率

特定样本回收率

样品类型	平均%	范围
Cell culture supernatant	115	110% - 123%
Serum	88	76% - 99%
Tissue Extracts	112	108% - 119%
Hep Plasma	105	100% - 113%
EDTA Plasma	100	95% - 106%
Cit plasma	112	100% - 120%

检测时间	1h 30m
实验步骤	One step assay
种属反应性	与反应: Mouse 不与反应: Cow
产品概述	<p>Mouse Myoglobin ELISA Kit (ab210965) is a single-wash 90 min sandwich ELISA designed for the quantitative measurement of Myoglobin protein in cell culture extracts, cell culture supernatant, plasma, serum, and tissue extracts. It uses our proprietary SimpleStep ELISA® technology. Quantitate Mouse Myoglobin with 9.4 pg/ml sensitivity.</p> <p>SimpleStep ELISA® technology employs capture antibodies conjugated to an affinity tag that is recognized by the monoclonal antibody used to coat our SimpleStep ELISA® plates. This approach to sandwich ELISA allows the formation of the antibody-analyte sandwich complex in a single step, significantly reducing assay time. See the SimpleStep ELISA® protocol summary in the image section for further details. Our SimpleStep ELISA® technology provides several benefits:</p> <ul style="list-style-type: none"> <li>- Single-wash protocol reduces assay time to 90 minutes or less</li> <li>- High sensitivity, specificity and reproducibility from superior antibodies</li> <li>- Fully validated in biological samples</li> <li>- 96-wells plate breakable into 12 x 8 wells strips</li> </ul> <p>A 384-well SimpleStep ELISA® microplate (<b>ab203359</b>) is available to use as an alternative to the 96-well microplate provided with SimpleStep ELISA® kits.</p>
说明	<p>Myoglobin is an oxygen- and iron-binding protein involved in the transportation of oxygen within muscles. Upon muscle injury, myoglobin can also be found in the bloodstream.s</p> <p>Abcam has not and does not intend to apply for the REACH Authorisation of customers' uses of products that contain European Authorisation list (Annex XIV) substances. It is the responsibility of our customers to check the necessity of application of REACH Authorisation, and any other relevant authorisations, for their intended uses.</p>
平台	Pre-coated microplate (12 x 8 well strips)

性能

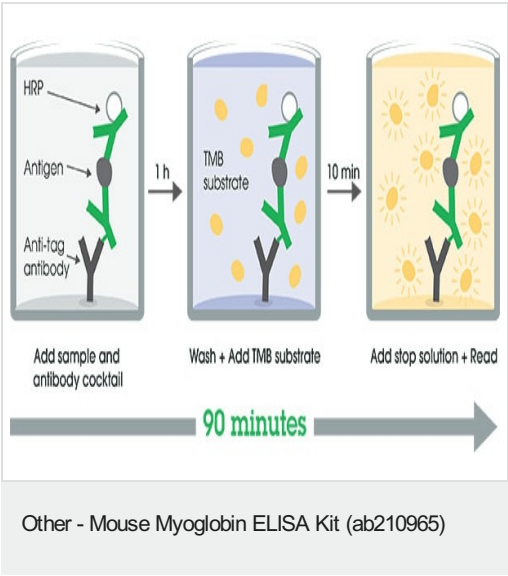
存放说明Store at +4°C. Please refer to protocols.

组件	1 x 96 tests
10X Mouse Myoglobin Capture Antibody	1 x 600µl
10X Mouse Myoglobin Detector Antibody	1 x 600µl
10X Wash Buffer PT (ab206977)	1 x 20ml
50X Cell Extraction Enhancer Solution (ab193971)	1 x 1ml
5X Cell Extraction Buffer PTR (ab193970)	1 x 10ml

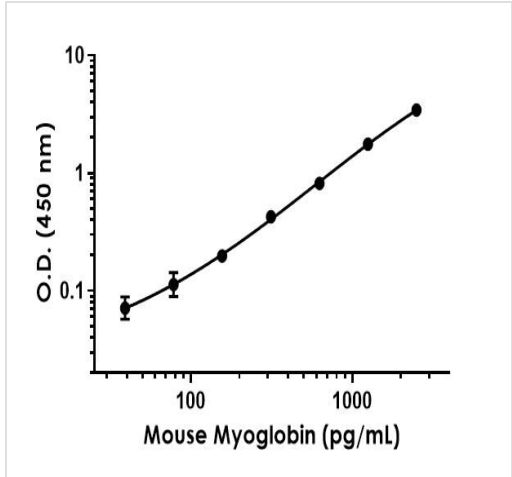
组件	1 x 96 tests
Antibody Diluent 4BI	1 x 6ml
Mouse Myoglobin Lyophilized Recombinant Protein	2 vials
Plate Seals	1 unit
Sample Diluent NS (ab193972)	1 x 50ml
SimpleStep Pre-Coated 96-Well Microplate (ab206978)	1 unit
Stop Solution	1 x 12ml
TMB Development Solution	1 x 12ml

功能	Serves as a reserve supply of oxygen and facilitates the movement of oxygen within muscles.
序列相似性	Belongs to the globin family.

图片

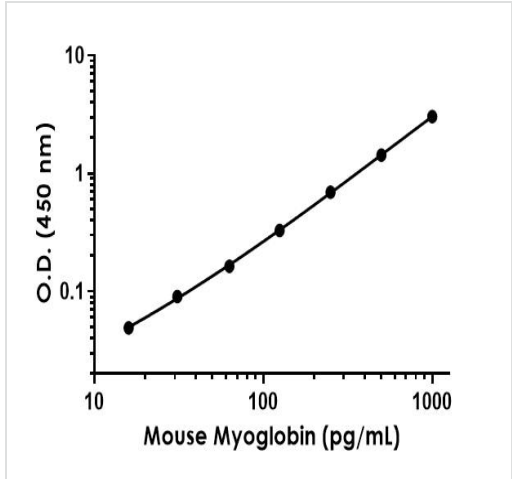


SimpleStep ELISA technology allows the formation of the antibody-antigen complex in one single step, reducing assay time to 90 minutes. Add samples or standards and antibody mix to wells all at once, incubate, wash, and add your final substrate. See protocol for a detailed step-by-step guide.



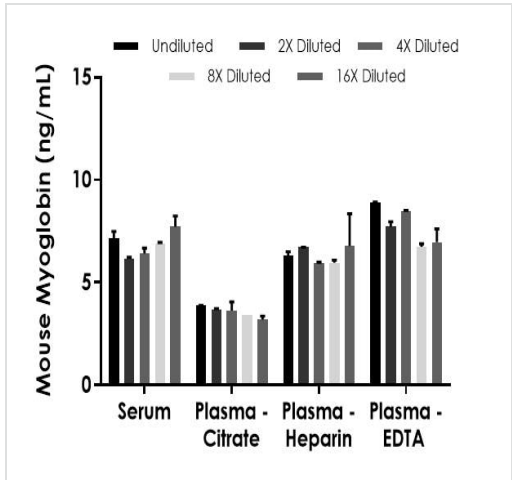
Background-subtracted data values (mean  $\pm$  SD) are graphed.

Example of mouse Myoglobin standard curve in Sample Diluent NS.



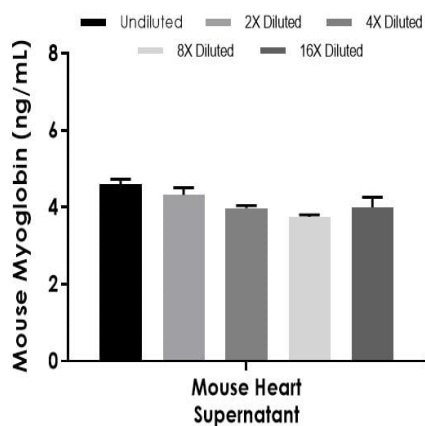
Background-subtracted data values (mean  $\pm$  SD) are graphed.

Example of mouse Myoglobin standard curve in 1X Cell Extraction Buffer PTR.



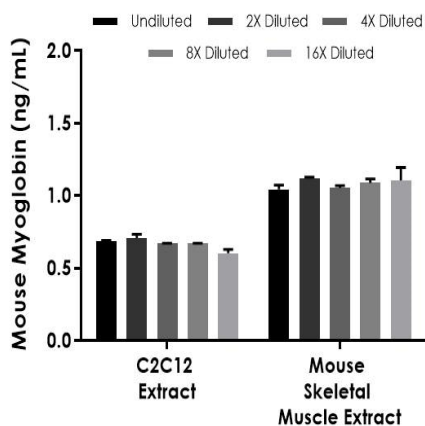
The concentrations of Myoglobin were measured in duplicates, interpolated from the Myoglobin standard curves and corrected for sample dilution. Undiluted samples are as follows: serum 12.5%, plasma (citrate) 37.5%, plasma (heparin) 20%, plasma (EDTA) 25% and heart supernatant 1:1600. The interpolated dilution factor corrected values are plotted (mean  $\pm$  SD,  $n=2$ ). The mean Myoglobin concentration was determined to be 6.87 ng/mL in serum, 3.57 ng/mL in plasma (citrate), 6.35 ng/mL in plasma (heparin), 7.76 ng/mL in plasma (EDTA) and 4,187 ng/mL in heart supernatant.

Interpolated concentrations of native Myoglobin in mouse serum, plasma and cell culture supernatant samples.



Interpolated concentrations of native Myoglobin in mouse tissue supernatant samples.

The concentrations of Myoglobin were measured in duplicates, interpolated from the Myoglobin standard curves and corrected for sample dilution. Undiluted samples are as follows: 1: 1,600 mouse heart tissue supernatant. The interpolated dilution factor corrected values are plotted (mean  $\pm$  SD,  $n=2$ ). The mean Myoglobin concentration was determined to be 4.19  $\mu\text{g/mL}$  in mouse heart supernatant.



Interpolated concentrations of native Myoglobin in mouse skeletal muscle based on a 300 ng/mL extract load and C2C12 extract based on a 125  $\mu\text{g/mL}$  extract load.

The concentrations of Myoglobin were measured in duplicate and interpolated from the Myoglobin standard curve and corrected for sample dilution. The interpolated dilution factor corrected values are plotted (mean  $\pm$  SD,  $n=2$ ). The mean Myoglobin concentration was determined to be 1.08 ng/mL in skeletal muscle extract and 0.67 ng/mL in C2C12 extract.

Powered by  
recombinant antibodies



**Research with confidence**  
Consistent and reproducible results



**Long-term and scalable supply**  
Recombinant technology



**Success from the first experiment**  
Confirmed specificity



**Ethical standards compliant**  
Animal-free production

Sandwich ELISA - Mouse Myoglobin ELISA Kit  
(ab210965)

To learn more about the advantages of recombinant antibodies see [here](#).

**Please note:** All products are "FOR RESEARCH USE ONLY. NOT FOR USE IN DIAGNOSTIC PROCEDURES"

### Our Abpromise to you: Quality guaranteed and expert technical support

---

- Replacement or refund for products not performing as stated on the datasheet
- Valid for 12 months from date of delivery
- Response to your inquiry within 24 hours
- We provide support in Chinese, English, French, German, Japanese and Spanish
- Extensive multi-media technical resources to help you
- We investigate all quality concerns to ensure our products perform to the highest standards

If the product does not perform as described on this datasheet, we will offer a refund or replacement. For full details of the Abpromise, please visit <https://www.abcam.cn/abpromise> or contact our technical team.

### Terms and conditions

---

- Guarantee only valid for products bought direct from Abcam or one of our authorized distributors