

Mouse HGF ELISA Kit ab223862

重组 SimpleStep ELISA

2 References 10 图像

概述

产品名称 小鼠HGF ELISA试剂盒

检测方法 Colorimetric

批次内				
样品	n	Mean	SD	CV%
Serum	5			3.2%

批次间				
样品	n	Mean	SD	CV%
Serum	3			4.9%

样品类型 Serum, Cell culture extracts, Tissue Extracts, Hep Plasma, EDTA Plasma, Cit plasma

检测类型 Sandwich (quantitative)

灵敏度 8.4 pg/ml

范围 62.5 pg/ml - 4000 pg/ml

特定样本回收率		
样品类型	平均%	范围
Serum	111	109% - 117%
Cell culture extracts	104	101% - 107%
Tissue Extracts	119	113% - 123%
Cell culture media	109	107% - 112%
EDTA Plasma	104	100% - 108%
Cit plasma	108	105% - 111%

检测时间	1h 30m
实验步骤	One step assay
种属反应性	与反应: Mouse
产品概述	<p>Mouse HGF ELISA Kit (ab223862) is a single-wash 90 min sandwich ELISA designed for the quantitative measurement of HGF protein in cell culture extracts, cit plasma, edta plasma, hep plasma, serum, and tissue extracts. It uses our proprietary SimpleStep ELISA® technology. Quantitate Mouse HGF with 8.4 pg/ml sensitivity.</p> <p>SimpleStep ELISA® technology employs capture antibodies conjugated to an affinity tag that is recognized by the monoclonal antibody used to coat our SimpleStep ELISA® plates. This approach to sandwich ELISA allows the formation of the antibody-analyte sandwich complex in a single step, significantly reducing assay time. See the SimpleStep ELISA® protocol summary in the image section for further details. Our SimpleStep ELISA® technology provides several benefits:</p> <ul style="list-style-type: none"> - Single-wash protocol reduces assay time to 90 minutes or less - High sensitivity, specificity and reproducibility from superior antibodies - Fully validated in biological samples - 96-wells plate breakable into 12 x 8 wells strips <p>A 384-well SimpleStep ELISA® microplate (ab203359) is available to use as an alternative to the 96-well microplate provided with SimpleStep ELISA® kits.</p>
说明	<p>Hepatocyte Growth Factor (HGF) is mitogen of parenchymal hepatocytes. HGF also acts as a growth factor and is expressed by a wide variety of tissue and cell types. HGF binds to the HGF-Receptor to help regulate cell growth, cell motility and morphogenesis. Elevated circulating levels of HGF can be measured as prognostic marker of severity of hypertension and heart failure. HGF is secreted as a full length inactive polypeptide, and then is cleaved by serine proteases into a 69-kDa alpha-chain and 34-kDa beta chain which dimerize producing the active heterodimeric molecule. Mouse HGF SimpleStep ELISA® (ab223862) is designed to recognize this dimerized protein.</p> <p>The standard is affinity purified.</p> <p>Abcam has not and does not intend to apply for the REACH Authorisation of customers' uses of products that contain European Authorisation list (Annex XIV) substances.</p> <p>It is the responsibility of our customers to check the necessity of application of REACH Authorisation, and any other relevant authorisations, for their intended uses.</p>
平台	Microplate (12 x 8 well strips)
性能	

存放说明

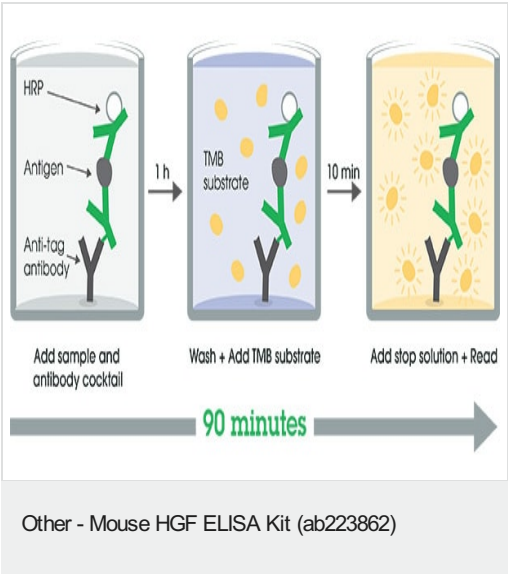
Store at +4°C. Please refer to protocols.

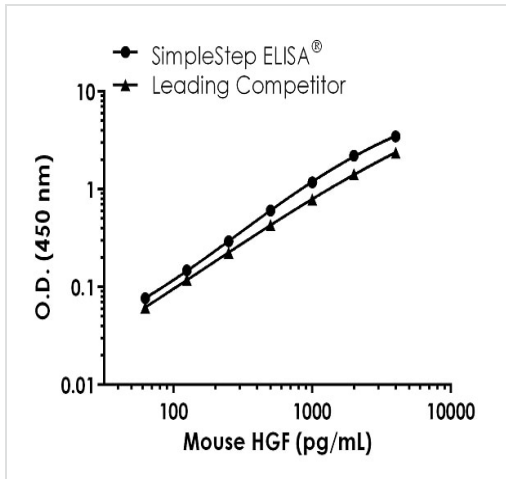
组件	1 x 96 tests
10X Mouse HGF Capture Antibody	1 x 600µl
10X Mouse HGF Detector Antibody	1 x 600µl

组件	1 x 96 tests
10X Wash Buffer PT (ab206977)	1 x 20ml
50X Cell Extraction Enhancer Solution (ab193971)	1 x 1ml
5X Cell Extraction Buffer PTR (ab193970)	1 x 10ml
Antibody Diluent CPR	1 x 6ml
Mouse HGF Lyophilized Recombinant Protein	2 vials
Plate Seals	1 unit
Sample Diluent NS (ab193972)	1 x 50ml
SimpleStep Pre-Coated 96-Well Microplate (ab206978)	1 unit
Stop Solution	1 x 12ml
TMB Development Solution	1 x 12ml

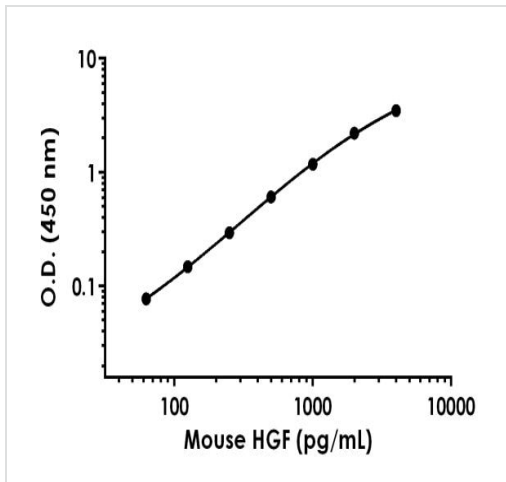
功能	Potent mitogen for mature parenchymal hepatocyte cells, seems to be a hepatotrophic factor, and acts as a growth factor for a broad spectrum of tissues and cell types. Activating ligand for the receptor tyrosine kinase MET by binding to it and promoting its dimerization.
疾病相关	Deafness, autosomal recessive, 39
序列相似性	<p>Belongs to the peptidase S1 family. Plasminogen subfamily.</p> <p>Contains 4 kringle domains.</p> <p>Contains 1 PAN domain.</p> <p>Contains 1 peptidase S1 domain.</p>

图片

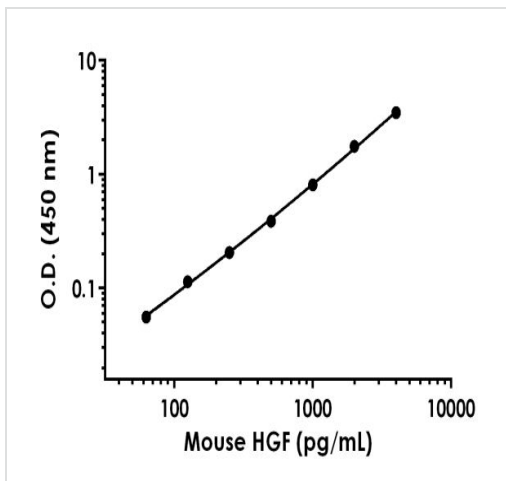




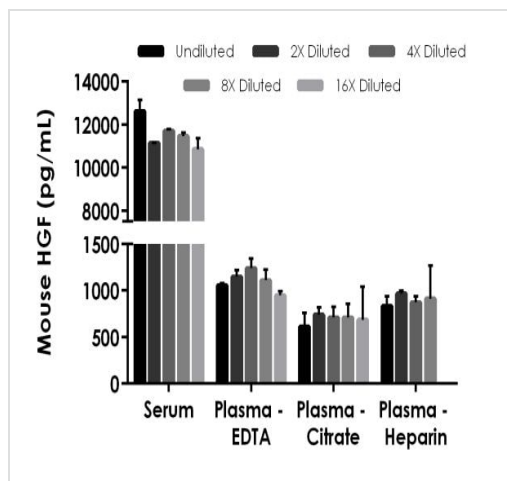
Mouse HGF standard curve comparison data



Example of mouse HGF standard curve in Sample Diluent NS

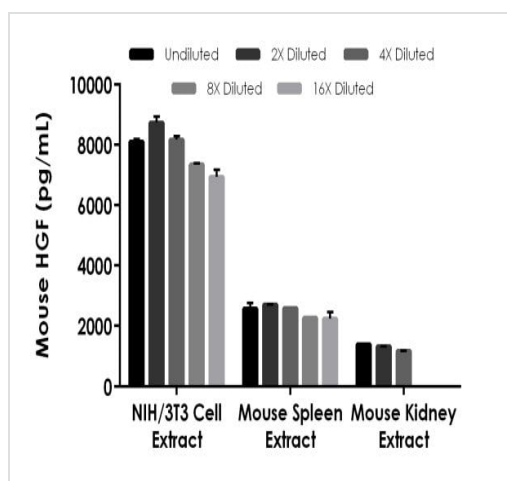


Example of mouse HGF standard curve in 1X Cell Extraction Buffer PTR



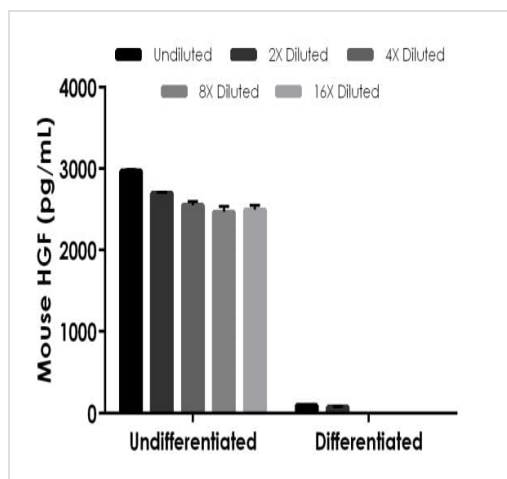
Interpolated concentrations of native HGF in mouse serum and plasma samples

The concentrations of HGF were measured in duplicates, interpolated from the HGF standard curves and corrected for sample dilution. Undiluted samples are as follows: serum 20%, plasma (EDTA) 50%, plasma (citrate) 50%, and plasma (heparin) 50%. The interpolated dilution factor corrected values are plotted (mean \pm SD, n=2). The mean HGF concentration was determined to be 11,764 pg/mL in serum, 1099 pg/mL in plasma (EDTA), 691 pg/mL in plasma (citrate) and 896 pg/mL in plasma heparin).



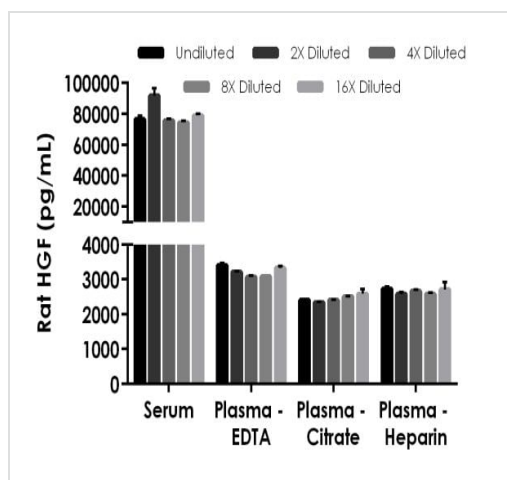
Interpolated concentrations of native HGF in mouse cell and tissue extracts, extracts based on a 4,000 μ g/mL extract load

The concentrations of HGF were measured in duplicate and interpolated from the HGF standard curve and corrected for sample dilution. The interpolated dilution factor corrected values are plotted (mean \pm SD, n=2). The mean HGF concentration was determined to be 7,859 pg/mL in NIH/3T3 cell extract, 2,472 pg/mL in mouse spleen tissue extract and 1,291 pg/mL in mouse kidney tissue extract.



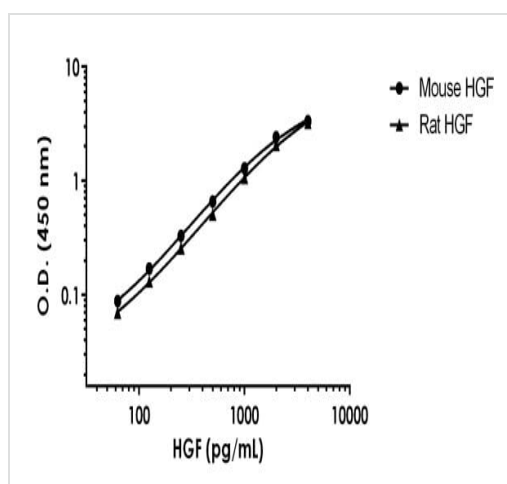
Interpolated concentrations of native HGF in mouse 3T3-L1 undifferentiated and 3T3-L1 adipocyte differentiated cell extract samples, sample based on a 1,000 µg/mL extract load

Mouse 3T3-L1 cells were either undifferentiated (not allowed to reach confluency) or differentiated (cultured for 48 hours in adipocyte differentiation medium). The concentrations of HGF were measured in duplicate and interpolated from the HGF standard curve and corrected for sample dilution. The interpolated dilution factor corrected values are plotted (mean \pm SD, n=2). The mean HGF concentration was determined to be 2,636 pg/mL in undifferentiated 3T3-L1 cell extract and 88 pg/mL in adipocyte differentiated 3T3-L1 cell extract.



Interpolated concentrations of native HGF in rat serum and plasma samples

The concentrations of HGF were measured in duplicates, interpolated from the HGF standard curves and corrected for sample dilution. Undiluted samples are as follows: serum 20%, plasma (EDTA) 100%, plasma (citrate) 100%, and plasma (heparin) 100%. The interpolated dilution factor corrected values are plotted (mean \pm SD, n=2). The mean HGF concentration was determined to be 79,543 pg/mL in serum, 3,151 pg/mL in plasma (EDTA), 2,395 pg/mL in plasma (citrate) and 2,611 pg/mL in plasma heparin).



Recombinant rat and mouse HGF standard curves

Recombinant rat HGF was prepared at 4 ng/mL and diluted with a 2-fold titration alongside of mouse HGF standard curve, and assayed for cross reactivity. 100% cross-reactivity was observed.

Powered by
recombinant antibodies



Research with confidence
Consistent and reproducible results



Long-term and scalable supply
Recombinant technology



Success from the first experiment
Confirmed specificity



Ethical standards compliant
Animal-free production

Sandwich ELISA - Mouse HGF ELISA Kit
(ab223862)

To learn more about the advantages of recombinant antibodies see [here](#).

Please note: All products are "FOR RESEARCH USE ONLY. NOT FOR USE IN DIAGNOSTIC PROCEDURES"

Our Abpromise to you: Quality guaranteed and expert technical support

- Replacement or refund for products not performing as stated on the datasheet
- Valid for 12 months from date of delivery
- Response to your inquiry within 24 hours
- We provide support in Chinese, English, French, German, Japanese and Spanish
- Extensive multi-media technical resources to help you
- We investigate all quality concerns to ensure our products perform to the highest standards

If the product does not perform as described on this datasheet, we will offer a refund or replacement. For full details of the Abpromise, please visit <https://www.abcam.cn/abpromise> or contact our technical team.

Terms and conditions

- Guarantee only valid for products bought direct from Abcam or one of our authorized distributors