

Mouse DLL1 ELISA Kit ab208342

重组 SimpleStep ELISA

5 图像

概述

产品名称 小鼠DLL1 ELISA试剂盒

检测方法 Colorimetric

批次内				
样品	n	Mean	SD	CV%
Mouse serum	5			2.8%

批次间				
样品	n	Mean	SD	CV%
Mouse serum	3			7.2%

样品类型 Cell culture supernatant, Serum, Plasma

检测类型 Sandwich (quantitative)

灵敏度 24 pg/ml

范围 62.5 pg/ml - 4000 pg/ml

特定样本回收率		
样品类型	平均%	范围
Cell culture supernatant	99	94% - 104%
Serum	100	99% - 101%
Hep Plasma	101	98% - 104%
EDTA Plasma	103	102% - 105%
Cit plasma	104	103% - 106%

检测时间 1h 30m

实验步骤 One step assay

与反应: Mouse

产品概述

Mouse DLL1 ELISA Kit (ab208342) is a single-wash 90 min sandwich ELISA designed for the quantitative measurement of DLL1 protein in cell culture supernatant, serum, and plasma. It uses our proprietary SimpleStep ELISA® technology. Quantitate Mouse DLL1 with 24 pg/ml sensitivity.

SimpleStep ELISA® technology employs capture antibodies conjugated to an affinity tag that is recognized by the monoclonal antibody used to coat our SimpleStep ELISA® plates. This approach to sandwich ELISA allows the formation of the antibody-analyte sandwich complex in a single step, significantly reducing assay time. See the SimpleStep ELISA® protocol summary in the image section for further details. Our SimpleStep ELISA® technology provides several benefits:

- Single-wash protocol reduces assay time to 90 minutes or less
- High sensitivity, specificity and reproducibility from superior antibodies
- Fully validated in biological samples
- 96-wells plate breakable into 12 x 8 wells strips

A 384-well SimpleStep ELISA® microplate (**ab203359**) is available to use as an alternative to the 96-well microplate provided with SimpleStep ELISA® kits.

说明

DLL1 (Delta-like protein 1) is a transmembrane glycoprotein that is needed during development for cell-to-cell communication in embryos and in the nervous system development. In adult tissues, DLL1 is involved in morphogenesis and remodeling and is overexpressed in several types of cancers.

平台

Pre-coated microplate (12 x 8 well strips)

性能

存放说明

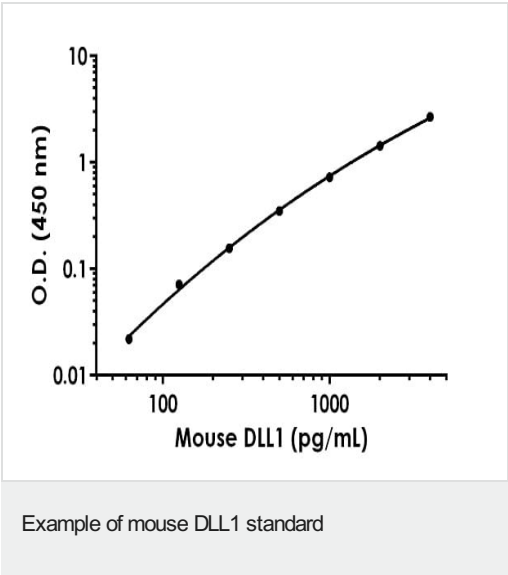
Store at +4°C. Please refer to protocols.

组 件	1 x 96 tests
10X Mouse DLL1 Capture Antibody	1 x 600µl
10X Mouse DLL1 Detector Antibody	1 x 600µl
10X Wash Buffer PT (ab206977)	1 x 20ml
Antibody Diluent 5BR	1 x 6ml
Mouse DLL1 Lyophilized Recombinant Protein	2 vials
Plate Seals	1 unit
Sample Diluent NS (ab193972)	1 x 50ml
SimpleStep Pre-Coated 96-Well Microplate (ab206978)	1 unit
Stop Solution	1 x 12ml

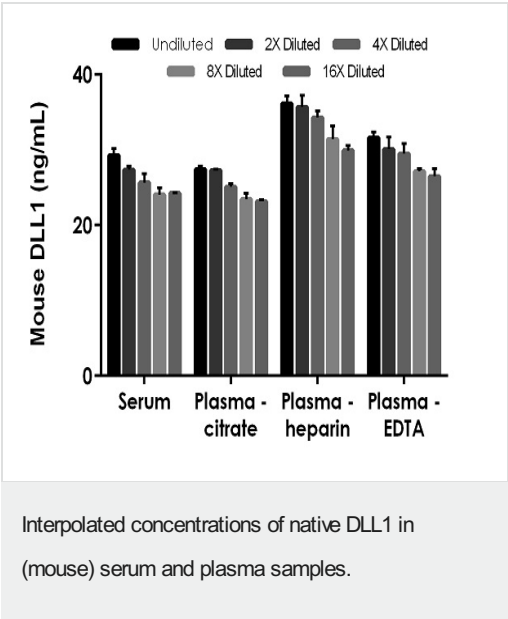
组件	1 x 96 tests
TMB Development Solution	1 x 12ml

功能	Acts as a ligand for Notch receptors. Blocks the differentiation of progenitor cells into the B-cell lineage while promoting the emergence of a population of cells with the characteristics of a T-cell/NK-cell precursor.
组织特异性	Expressed in heart and pancreas, with lower expression in brain and muscle and almost no expression in placenta, lung, liver and kidney.
序列相似性	Contains 1 DSL domain. Contains 8 EGF-like domains.
翻译后修饰	Ubiquitinated by MIB (MIB1 or MIB2), leading to its endocytosis and subsequent degradation.
细胞定位	Membrane.

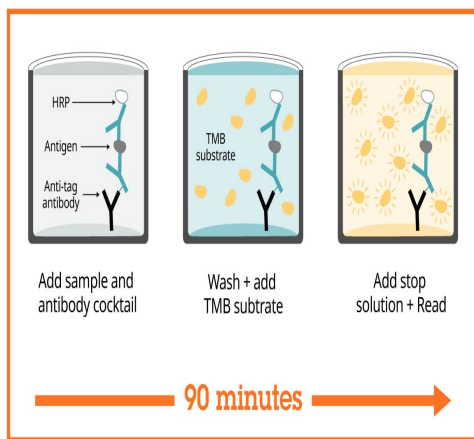
图片



Background-subtracted data values (mean +/- SD) are graphed.



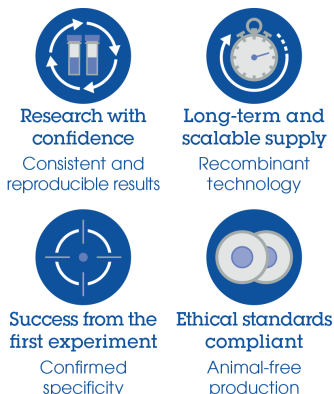
The concentrations of DLL1 were measured in duplicates, interpolated from the DLL1 standard curves and corrected for sample dilution. Undiluted samples are as follows: serum 5%, plasma (citrate) 5%, plasma (heparin) 2.5% and spleen supernatant 25%. The interpolated dilution factor corrected values are plotted (mean +/- SD, n=2). The mean DLL1 concentration was determined to be 26 ng/mL in serum, 26 ng/mL in plasma (citrate), 34 ng/mL in plasma (heparin) and 29 ng/mL in plasma (EDTA).



Sandwich ELISA - Mouse DLL1 ELISA Kit
(ab208342)

SimpleStep ELISA technology allows the formation of the antibody-antigen complex in one single step, reducing assay time to 90 minutes. Add samples or standards and antibody mix to wells all at once, incubate, wash, and add your final substrate. See protocol for a detailed step-by-step guide.

Powered by
recombinant antibodies



Sandwich ELISA - Mouse DLL1 ELISA Kit
(ab208342)

To learn more about the advantages of recombinant antibodies see [here](#).

Get more done with
SimpleStep ELISA



Sandwich ELISA - Mouse DLL1 ELISA Kit
(ab208342)

To learn more about the advantages of SimpleStep ELISA[®] kits see [here](#).

Please note: All products are "FOR RESEARCH USE ONLY. NOT FOR USE IN DIAGNOSTIC PROCEDURES"

Our Abpromise to you: Quality guaranteed and expert technical support

- Replacement or refund for products not performing as stated on the datasheet
- Valid for 12 months from date of delivery
- Response to your inquiry within 24 hours
- We provide support in Chinese, English, French, German, Japanese and Spanish
- Extensive multi-media technical resources to help you
- We investigate all quality concerns to ensure our products perform to the highest standards

If the product does not perform as described on this datasheet, we will offer a refund or replacement. For full details of the Abpromise, please visit <https://www.abcam.cn/abpromise> or contact our technical team.

Terms and conditions

- Guarantee only valid for products bought direct from Abcam or one of our authorized distributors