

Mouse CXCL1 ELISA Kit (GRO alpha) ab216951

重组

6 References 8 图像

概述

产品名称

检测方法

精确度

样品类型

检测类型

灵敏度

范围

回收率

小鼠CXCL1 ELISA试剂盒 (GRO alpha)

Colorimetric

批次内

样品	n	Mean	SD	CV%
Mouse serum	8			6.8%

批次间

样品	n	Mean	SD	CV%
Mouse serum	3			10.1%

Cell culture supernatant, Serum, Cell culture extracts, Hep Plasma, EDTA Plasma, Cit plasma

Sandwich (quantitative)

0.66 pg/ml

5.47 pg/ml - 350 pg/ml

特定样本回收率

样品类型	平均%	范围
Serum	91	88% - 94%
Cell culture extracts	95	95% - 96%
Cell culture media	110	109% - 110%
Hep Plasma	79	72% - 90%
EDTA Plasma	94	89% - 98%
Cit plasma	94	92% - 97%

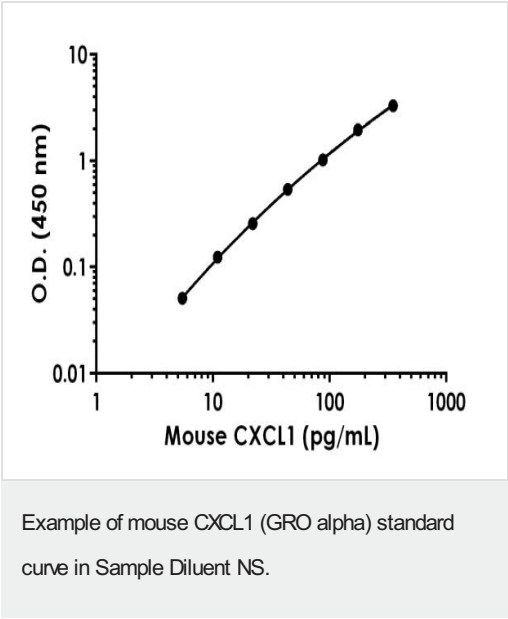
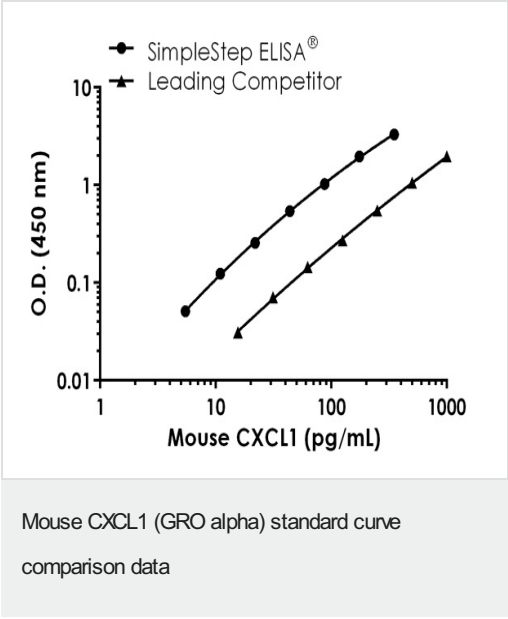
检测时间	1h 45m
实验步骤	Multiple steps standard assay
种属反应性	与反应: Mouse 不与反应: Cow
产品概述	Mouse CXCL1 ELISA Kit (GRO alpha) (ab216951) sandwich ELISA designed for the quantitative measurement of CXCL1 (GRO alpha) protein in cell culture extracts, cell culture supernatant, cit plasma, edta plasma, hep plasma, and serum. It quantitates Mouse CXCL1 with 0.66 pg/ml sensitivity. The recombinant antibodies used in this kit guarantee specificity and consistency of results.
说明	<p>CXCL1 is a member of the CXC family of chemokines. Chemokines play roles in normal and pathological processes including allergic responses, angiogenesis, inflammation, tumor growth and metastasis. Mouse CXCL2 and CXCL3 share 67% and 60% sequence homology with mouse CXCL1, respectively. Additionally, Rat CXCL1 is 89% homologous with mouse CXCL1.</p> <p>Abcam has not and does not intend to apply for the REACH Authorisation of customers' uses of products that contain European Authorisation list (Annex XIV) substances.</p> <p>It is the responsibility of our customers to check the necessity of application of REACH Authorisation, and any other relevant authorisations, for their intended uses.</p>
平台	Pre-coated microplate (12 x 8 well strips)
性能	

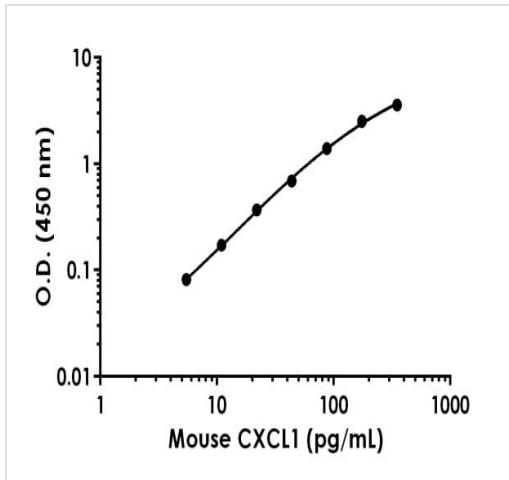
存放说明 Store at +4°C. Please refer to protocols.

组 件	1 x 96 tests
10X Mouse CXCL1 Capture Antibody	1 x 600µl
10X Mouse CXCL1 Detector Antibody	1 x 600µl
10X Wash Buffer PT (ab206977)	2 x 20ml
50X Cell Extraction Enhancer Solution (ab193971)	1 x 1ml
5X Cell Extraction Buffer PTR (ab193970)	1 x 10ml
Antibody Diluent CPI2	2 x 6ml
Mouse CXCL1 Lyophilized Recombinant Protein (ab9906)	2 vials
Plate Seals	1 unit
Sample Diluent NS (ab193972)	1 x 50ml
SimpleStep Pre-Coated 96-Well Microplate (ab206978)	1 unit
Stop Solution	1 x 12ml
TMB Development Solution	1 x 12ml

功能	Has chemotactic activity for neutrophils. May play a role in inflammation and exerts its effects on endothelial cells in an autocrine fashion. In vitro, the processed forms GRO-alpha(4-73), GRO-alpha(5-73) and GRO-alpha(6-73) show a 30-fold higher chemotactic activity.
序列相似性	Belongs to the intercrine alpha (chemokine CxC) family.
翻译后修饰	N-terminal processed forms GRO-alpha(4-73), GRO-alpha(5-73) and GRO-alpha(6-73) are produced by proteolytic cleavage after secretion from peripheral blood monocytes.
细胞定位	Secreted.

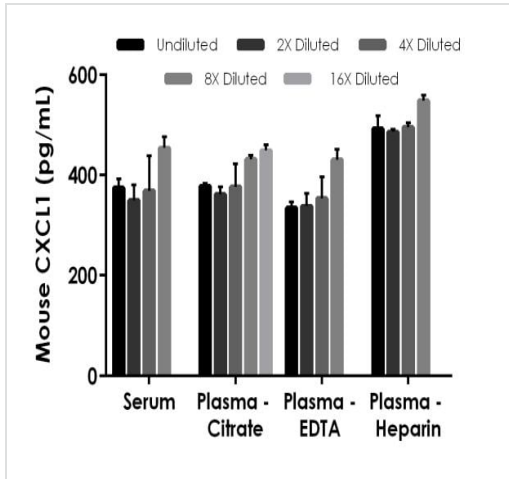
图片





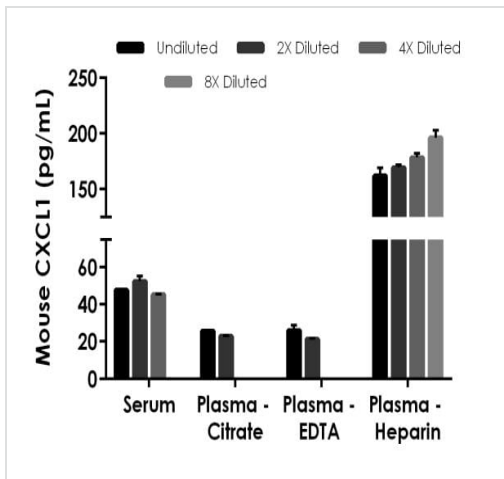
Background-subtracted data values (mean +/- SD) are graphed.

Example of mouse CXCL1 (GRO alpha) standard curve in 1X Cell Extraction Buffer PTR.



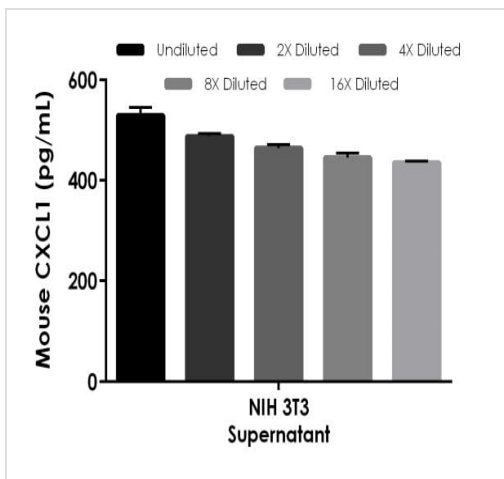
The concentrations of CXCL1 (GRO alpha) were measured in duplicates, interpolated from the CXCL1 standard curves and corrected for sample dilution. Undiluted samples are as follows: serum 50%, plasma (citrate) 50%, plasma (EDTA) 50%, and plasma (heparin) 50%. The interpolated dilution factor corrected values are plotted (mean +/- SD, n=2). The mean CXCL1 concentration was determined to be 386.84 pg/mL in neat serum, 399.45 pg/mL in neat plasma (citrate), 364.34 pg/mL in neat plasma (EDTA), and 505.80 pg/mL in neat plasma (heparin).

Interpolated concentrations of spiked CXCL1 (GRO alpha) in mouse serum and plasma samples.



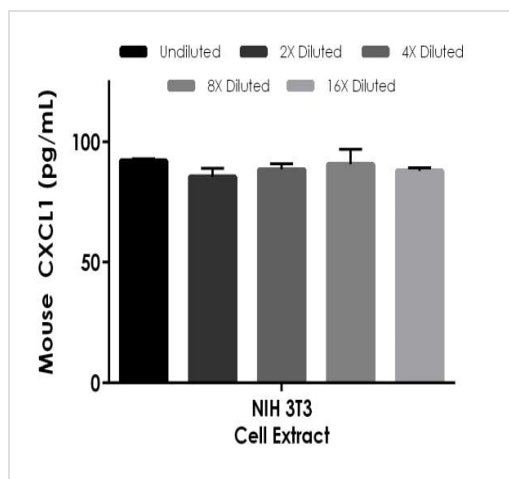
Interpolated concentrations of native CXCL1 (GRO alpha) in mouse serum and plasma samples.

The concentrations of CXCL1 (GRO alpha) were measured in duplicates, interpolated from the CXCL1 standard curves and corrected for sample dilution. Undiluted samples are as follows: serum 50%, plasma (citrate) 50%, plasma (EDTA) 50%, and plasma (heparin) 50%. The interpolated dilution factor corrected values are plotted (mean +/- SD, n=2). The mean CXCL1 concentration was determined to be 48.56 pg/mL in neat serum, 24.34 pg/mL in neat plasma (citrate), 23.67 pg/mL in neat plasma (EDTA), and 176.56 pg/mL in neat plasma (heparin).



Interpolated concentrations of native CXCL1 (GRO alpha) in mouse NIH 3T3 cell culture supernatant sample.

The concentrations of CXCL1 (GRO alpha) were measured in duplicates, interpolated from the CXCL1 standard curves and corrected for sample dilution. Undiluted samples are as follows: NIH 3T3 supernatant 50%. The interpolated dilution factor corrected values are plotted (mean +/- SD, n=2). The mean CXCL1 concentration was determined to be 472.88 pg/mL in neat mouse NIH 3T3 cell culture supernatant.



Interpolated concentrations of native CXCL1 (GRO alpha) in mouse NIH 3T3 cell extract sample based on a 500 µg/mL extract load.

The concentrations of CXCL1 (GRO alpha) were measured in duplicate and interpolated from the CXCL1 standard curve and corrected for sample dilution. The interpolated dilution factor corrected values are plotted (mean \pm SD, n=2). The mean CXCL1 concentration was determined to be 89.05 pg/mL in mouse NIH 3T3 cell extract sample.

Powered by
recombinant antibodies

Research with confidence
Consistent and reproducible results

Long-term and scalable supply
Recombinant technology

Success from the first experiment
Confirmed specificity

Ethical standards compliant
Animal-free production

Sandwich ELISA - Mouse CXCL1 ELISA Kit (GRO alpha) (ab216951)

To learn more about the advantages of recombinant antibodies see [here](#).

Please note: All products are "FOR RESEARCH USE ONLY. NOT FOR USE IN DIAGNOSTIC PROCEDURES"

Our Abpromise to you: Quality guaranteed and expert technical support

- Replacement or refund for products not performing as stated on the datasheet
- Valid for 12 months from date of delivery
- Response to your inquiry within 24 hours
- We provide support in Chinese, English, French, German, Japanese and Spanish
- Extensive multi-media technical resources to help you
- We investigate all quality concerns to ensure our products perform to the highest standards

If the product does not perform as described on this datasheet, we will offer a refund or replacement. For full details of the Abpromise, please visit <https://www.abcam.cn/abpromise> or contact our technical team.

Terms and conditions

- Guarantee only valid for products bought direct from Abcam or one of our authorized distributors