

Mouse Albumin ELISA Kit ab108791

16 References 3 图像

概述

产品名称

检测方法

精确度

样品类型

检测类型

灵敏度

范围

回收率

检测时间

实验步骤

种属反应性

产品概述

小鼠Albumin ELISA试剂盒

Colorimetric

批次内

样品	n	Mean	SD	CV%
Overall				5.2%

批次间

样品	n	Mean	SD	CV%
Overall				9.6%

Serum, Plasma

Competitive

= 1.4 µg/ml


1.563 µg/ml - 100 µg/ml

= 96 %

2h 00m

Multiple steps standard assay

与反应: Mouse

预测可用于: Rat 

Mouse Albumin ELISA kit (ab108791) is a competitive ELISA designed for the quantitative measurement of mouse Albumin levels in plasma and serum.

The entire kit may be stored at -20°C for long term storage before reconstitution - Avoid repeated freeze-thaw cycles.

平台 Microplate

性能

存放说明 Store at -20°C. Please refer to protocols.

组件	1 x 96 tests
100X Streptavidin-Peroxidase Conjugate	1 x 80µl
10X Diluent N Concentrate	1 x 30ml
2X Biotinylated Mouse Albumin (Lyophilized)	1 vial
20X Wash Buffer Concentrate	1 x 30ml
Albumin Microplate (12 x 8 wells)	1 test
Albumin Standard	1 vial
Chromogen Substrate	1 x 7ml
Sealing Tapes	3 units
Stop Solution	1 x 11ml

功能 Serum albumin, the main protein of plasma, has a good binding capacity for water, Ca(2+), Na(+), K(+), fatty acids, hormones, bilirubin and drugs. Its main function is the regulation of the colloidal osmotic pressure of blood. Major zinc transporter in plasma, typically binds about 80% of all plasma zinc.

组织特异性 Plasma.

疾病相关 Defects in ALB are a cause of familial dysalbuminemic hyperthyroxinemia (FDH) [MIM:103600]. FDH is a form of euthyroid hyperthyroxinemia that is due to increased affinity of ALB for T(4). It is the most common cause of inherited euthyroid hyperthyroxinemia in Caucasian population.

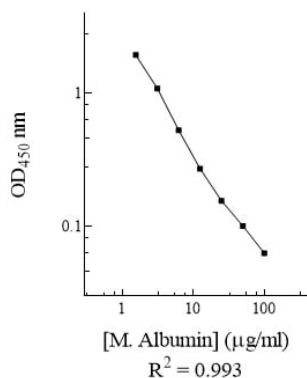
序列相似性 Belongs to the ALB/AFP/VDB family.
Contains 3 albumin domains.

翻译后修饰 Kenitra variant is partially O-glycosylated at Thr-620. It has two new disulfide bonds Cys-600 to Cys-602 and Cys-601 to Cys-606.
Glycated in diabetic patients.
Phosphorylation sites are present in the extracellular medium.
Acetylated on Lys-223 by acetylsalicylic acid.

细胞定位 Secreted.

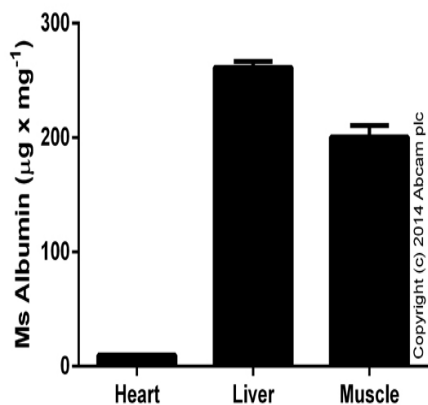
图片

Mouse Albumin Standard Curve



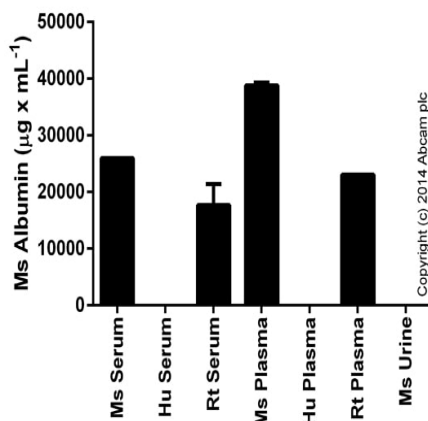
Mouse Albumin ELISA Kit example standard curve

Mouse Albumin ELISA Kit example standard curve – data provided for demonstration purposes only.



Competitive ELISA - Albumin Mouse ELISA Kit (ab108791)

Albumin measured in mouse tissue lysates (expressed as per mg of extracted protein), with background signal subtracted (duplicates; +/- SD).



Competitive ELISA - Albumin Mouse ELISA Kit (ab108791)

Albumin measured in biological fluids, background signal subtracted (duplicates +/- SD).

Our Abpromise to you: Quality guaranteed and expert technical support

- Replacement or refund for products not performing as stated on the datasheet
- Valid for 12 months from date of delivery
- Response to your inquiry within 24 hours

- We provide support in Chinese, English, French, German, Japanese and Spanish
- Extensive multi-media technical resources to help you
- We investigate all quality concerns to ensure our products perform to the highest standards

If the product does not perform as described on this datasheet, we will offer a refund or replacement. For full details of the Abpromise, please visit <https://www.abcam.cn/abpromise> or contact our technical team.

Terms and conditions

- Guarantee only valid for products bought direct from Abcam or one of our authorized distributors