

Monkey Albumin ELISA Kit ab190533

1 图像

概述

产品名称	Monkey Albumin ELISA试剂盒				
检测方法	Colorimetric				
精确度	批次内				
	样品	n	Mean	SD	CV%
	Overall				< 10%
	批次间				
	样品	n	Mean	SD	CV%
	Overall				< 10%
样品类型	Urine, Serum, Plasma				
检测类型	Sandwich (quantitative)				
灵敏度	1.795 ng/ml				
范围	12.5 ng/ml - 400 ng/ml				
回收率	特定样本回收率				
	样品类型	平均%		范围	
	Serum	>=85		12.5ng/ml - 400ng/ml	
实验步骤	Multiple steps standard assay				
种属反应性	与反应: Monkey				
产品概述	Abcam's Albumin Monkey ELISA kit (ab190533) is an <i>in vitro</i> enzyme-linked immunosorbent				

absorbance, at 450 nm, is a measure of the concentration of Albumin in the test sample. The quantity of Albumin in the test sample can be interpolated from the standard curve constructed from the standards, and corrected for sample dilution.

#### 说明

Albumin (Alb) is a polyfunctional protein contributing to homeostasis through mechanisms of hemodynamics, transport and nutrition. Albumin is found both intra and extravascularly in all mammals and many lower vertebrates. It is a molecule of about 67,000 daltons, synthesized by the liver. Normally only very trace amounts of albumin escape reabsorption by kidney glomeruli and is excreted into the urine. Many occult diseases can cause kidney damage which may result in excessive amounts of serum proteins, including albumin, to be excreted by the kidney and into the urine. This ELISA kit can be used to measure albumin in serum, tissue extracts and other biological fluids.

The calibrator used in this kit is of human origin. It is quantitated with purified Cynomolgus monkey albumin and behaves identically with it.

#### 平台

Microplate

#### 性能

#### 存放说明

Store at +4°C. Please refer to protocols.

组件	1 x 96 tests
20X Wash Buffer Concentrate	1 x 50ml
5X Diluent Concentrate	1 x 50ml
Albumin Monkey Antibody coated microwells	1 unit
Albumin Monkey HRP Conjugate	1 vial
Chromogen Substrate Solution	1 x 12ml
Lyophilized Albumin Monkey Calibrator	1 vial
Stop Solution	1 x 12ml

#### 功能

Serum albumin, the main protein of plasma, has a good binding capacity for water, Ca(2+), Na(+), K(+), fatty acids, hormones, bilirubin and drugs. Its main function is the regulation of the colloidal osmotic pressure of blood. Major zinc transporter in plasma, typically binds about 80% of all plasma zinc.

#### 组织特异性

Plasma.

#### 疾病相关

Defects in ALB are a cause of familial dysalbuminemic hyperthyroxinemia (FDH) [MIM:103600]. FDH is a form of euthyroid hyperthyroxinemia that is due to increased affinity of ALB for T(4). It is the most common cause of inherited euthyroid hyperthyroxinemia in Caucasian population.

#### 序列相似性

Belongs to the ALB/AFP/VDB family.  
Contains 3 albumin domains.

#### 翻译后修饰

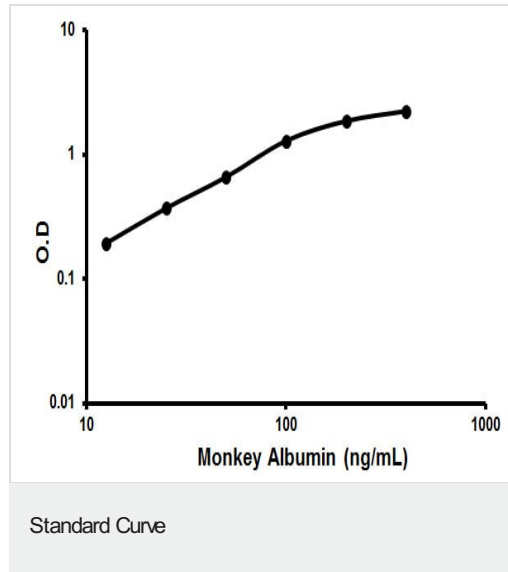
Kenitra variant is partially O-glycosylated at Thr-620. It has two new disulfide bonds Cys-600 to Cys-602 and Cys-601 to Cys-606.  
Glycated in diabetic patients.  
Phosphorylation sites are present in the extracellular medium.

Acetylated on Lys-223 by acetylsalicylic acid.

细胞定位

Secreted.

图片



Representative standard curve using ab190533 Albumin Monkey ELISA Kit.

**Please note:** All products are "FOR RESEARCH USE ONLY. NOT FOR USE IN DIAGNOSTIC PROCEDURES"

### Our Abpromise to you: Quality guaranteed and expert technical support

- Replacement or refund for products not performing as stated on the datasheet
- Valid for 12 months from date of delivery
- Response to your inquiry within 24 hours
- We provide support in Chinese, English, French, German, Japanese and Spanish
- Extensive multi-media technical resources to help you
- We investigate all quality concerns to ensure our products perform to the highest standards

If the product does not perform as described on this datasheet, we will offer a refund or replacement. For full details of the Abpromise, please visit <https://www.abcam.cn/abpromise> or contact our technical team.

### Terms and conditions

- Guarantee only valid for products bought direct from Abcam or one of our authorized distributors