

Ipilimumab ELISA Kit ab237653

★★★★★ [1 Abreviews](#) [1 图像](#)

概述

产品名称 Ipilimumab ELISA试剂盒

检测方法 Colorimetric

精确度 批次内

样品	n	Mean	SD	CV%
Overall				< 30%

批次间

样品	n	Mean	SD	CV%
Overall				< 30%

样品类型 Serum, Plasma

检测类型 Quantitative

灵敏度 10 ng/ml

范围 10 ng/ml - 300 ng/ml

回收率 特定样本回收率

样品类型	平均%	范围
Serum		85% - 115%

实验步骤 Multiple steps standard assay

种属反应性 与反应: Human

产品概述 Note: Ipilimumab ELISA kit ab237653 is intended for Research Use Only, not for use in diagnostic procedures.

This kit is a sandwich based ELISA kit. The color developed is proportional to the amount of Ipilimumab in the sample or standard. Results of samples can be determined directly using the standard curve.

说明 This product is manufactured by BioVision, an Abcam company and was previously called E4384 BioSim™ Ipilimumab (Human) ELISA Kit. E4384-100 is the same size as the 96 test size of

ab237653.

平台

Microplate

性能

存放说明

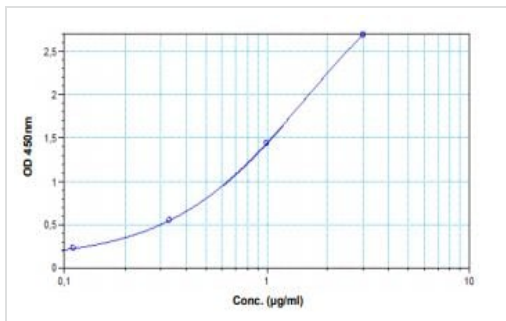
Store at +4°C. Please refer to protocols.

组件	96 tests
Assay Buffer	2 x 50ml
HRP-Conjugate	1 x 12ml
Ipilimumab Standard S1	1 x 0.3ml
Ipilimumab Standard S2	1 x 0.3ml
Ipilimumab Standard S3	1 x 0.3ml
Ipilimumab Standard S4	1 x 0.3ml
Ipilimumab Standard S5	1 x 0.3ml
Ipilimumab Standard S6	1 x 0.3ml
Ipilimumab Standard S7	1 x 0.3ml
Micro ELISA Plate	1 unit
Plate sealers	2 units
Stop Solution	1 x 12ml
TMB substrate	1 x 12ml
Wash buffer (20X)	1 x 50ml

相关性

Ipilimumab is a fully human IgG1 kappa antibody that binds to CTLA-4 (cytotoxic T lymphocyte associated antigen 4), a molecule on T cells that is indicated for unresectable or metastatic melanoma. The absence or presence of CTLA-4 can augment or suppress the immune system's T-cell response in fighting disease. Ipilimumab is designed to block the activity of CTLA-4, thereby sustaining an active immune response in its attack on cancer cells. The proposed mechanism of action is indirect, and may be through T-cell - mediated anti-tumor immune responses.

图片



Typical Standard Curve: This standard curve is for demonstration only. A standard curve must be run with each assay.

Example of Ipilimumab standard curve

Please note: All products are "FOR RESEARCH USE ONLY. NOT FOR USE IN DIAGNOSTIC PROCEDURES"

Our Abpromise to you: Quality guaranteed and expert technical support

- Replacement or refund for products not performing as stated on the datasheet
- Valid for 12 months from date of delivery
- Response to your inquiry within 24 hours
- We provide support in Chinese, English, French, German, Japanese and Spanish
- Extensive multi-media technical resources to help you
- We investigate all quality concerns to ensure our products perform to the highest standards

If the product does not perform as described on this datasheet, we will offer a refund or replacement. For full details of the Abpromise, please visit <https://www.abcam.cn/abpromise> or contact our technical team.

Terms and conditions

- Guarantee only valid for products bought direct from Abcam or one of our authorized distributors