

Infliximab ELISA Kit ab237647

1 图像

概述

产品名称	Infliximab ELISA试剂盒				
检测方法	Colorimetric				
精确度	批次内				
	样品	n	Mean	SD	CV%
	Overall				< 15%
	批次间				
	样品	n	Mean	SD	CV%
	Overall				< 15%
样品类型	Serum, Plasma				
检测类型	Sandwich (quantitative)				
灵敏度	30 ng/ml				
范围	100 ng/ml - 3000 ng/ml				
回收率	特定样本回收率				
	样品类型	平均%		范围	
	Serum			85% - 115%	
实验步骤	Multiple steps standard assay				
种属反应性	与反应: Human				
产品概述	Note: Infliximab ELISA kit ab237647 is intended for Research Use Only, not for use in diagnostic procedures.				

This kit is a sandwich based ELISA kit. The color developed is proportional to the amount of Infliximab in the sample or standard. Results of samples can be determined directly using the standard curve.

This product is manufactured by BioVision, an Abcam company and was previously called E4378 BioSim™ Infliximab (Remsima®)(Human) ELISA Kit. E4378-100 is the same size as the 96 test

说明

size of ab237647.

平台

Microplate (12 x 8 well strips)

性能

存放说明

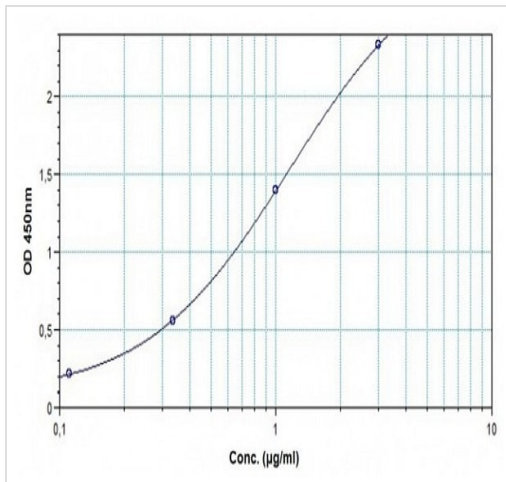
Store at +4°C. Please refer to protocols.

组件	96 tests
Assay Buffer	1 x 50ml
HRP-conjugate Probe	1 x 12ml
Infliximab Standard S1	1 x 0.3ml
Infliximab Standard S2	1 x 0.3ml
Infliximab Standard S3	1 x 0.3ml
Infliximab Standard S4	1 x 0.3ml
Infliximab Standard S5	1 x 0.3ml
Infliximab Standard S6	1 x 0.3ml
Infliximab Standard S7	1 x 0.3ml
Micro ELISA Plate	1 unit
Plate sealers	2 units
Stop Solution	1 x 12ml
TMB substrate	1 x 12ml
Wash buffer (20X)	1 x 50ml

相关性

Infliximab is a chimeric monoclonal antibody and used to treat auto- immune disorders. Infliximab reduces the amount of active human tumour necrosis factor alpha (hTNFa) in the body by binding to it and preventing it from signaling the receptors for TNFa on the surface of various cell types. TNFa is one of the key cytokines that triggers and sustains the inflammatory reactions. Infliximab is used for the treatment of psoriasis, Crohn's disease, ankylosing spondylitis, psoriatic arthritis, rheumatoid arthritis, ulcerative colitis.

图片



Typical Standard Curve: This standard curve is for demonstration only. A standard curve must be run with each assay.

Example of Infliximab standard curve

Please note: All products are "FOR RESEARCH USE ONLY. NOT FOR USE IN DIAGNOSTIC PROCEDURES"

Our Abpromise to you: Quality guaranteed and expert technical support

- Replacement or refund for products not performing as stated on the datasheet
- Valid for 12 months from date of delivery
- Response to your inquiry within 24 hours
- We provide support in Chinese, English, French, German, Japanese and Spanish
- Extensive multi-media technical resources to help you
- We investigate all quality concerns to ensure our products perform to the highest standards

If the product does not perform as described on this datasheet, we will offer a refund or replacement. For full details of the Abpromise, please visit <https://www.abcam.cn/abpromise> or contact our technical team.

Terms and conditions

- Guarantee only valid for products bought direct from Abcam or one of our authorized distributors