



Product datasheet

Human TIMP1 ELISA Kit ab187394

重组 SimpleStep ELISA

6 References 11 图像

概述

产品名称 人TIMP1 ELISA试剂盒

检测方法 Colorimetric

| 批次内 | | | | |
|-------|---|------|----|------|
| 样品 | n | Mean | SD | CV% |
| Serum | 8 | | | 4.4% |

| 批次间 | | | | |
|-------|---|------|----|------|
| 样品 | n | Mean | SD | CV% |
| Serum | 3 | | | 0.6% |

样品类型 Cell culture supernatant, Saliva, Serum, Hep Plasma, EDTA Plasma, Cit plasma

检测类型 Sandwich (quantitative)

灵敏度 17 pg/ml

范围 62.5 pg/ml - 4000 pg/ml

| 特定样本回收率 | | |
|--------------------------|-----|-----------|
| 样品类型 | 平均% | 范围 |
| Cell culture supernatant | 89 | 86% - 92% |
| Saliva | 84 | 82% - 87% |
| Serum | 89 | 89% - 90% |
| Hep Plasma | 95 | 94% - 98% |
| EDTA Plasma | 89 | 86% - 91% |
| Cit plasma | 97 | 95% - 99% |

检测时间

1h 30m

实验步骤

One step assay

种属反应性

与反应: Human

产品概述

Human TIMP1 ELISA kit has been re-developed. We have identified new recombinant monoclonal antibodies to provide improved performance and consistency.

Human TIMP1 ELISA Kit (ab187394) is a single-wash 90 min sandwich ELISA designed for the quantitative measurement of TIMP1 protein in cit plasma, edta plasma, hep plasma, serum, saliva, and cell culture supernatant. It uses our proprietary SimpleStep ELISA® technology. Quantitate Human TIMP1 with 17 pg/ml sensitivity.

SimpleStep ELISA® technology employs capture antibodies conjugated to an affinity tag that is recognized by the monoclonal antibody used to coat our SimpleStep ELISA® plates. This approach to sandwich ELISA allows the formation of the antibody-analyte sandwich complex in a single step, significantly reducing assay time. See the SimpleStep ELISA® protocol summary in the image section for further details. Our SimpleStep ELISA® technology provides several benefits:

- Single-wash protocol reduces assay time to 90 minutes or less
- High sensitivity, specificity and reproducibility from superior antibodies
- Fully validated in biological samples
- 96-wells plate breakable into 12 x 8 wells strips

A 384-well SimpleStep ELISA® microplate (**ab203359**) is available to use as an alternative to the 96-well microplate provided with SimpleStep ELISA® kits.

说明

Tissue inhibitor of metalloproteinases 1 (TIMP1 or Metalloproteinase inhibitor 1) is a widely expressed inhibitor of matrix metalloproteinases (MMPs). It functions by binding non-covalently to MMPs (in a 1:1 stoichiometry) and blocking access of substrate to the MMP active site. TIMP1 expression is induced by pro-inflammatory cytokines. It is a soluble factor found circulating in serum and plasma. TIMP1 appears also have functions that are independent of MMP inhibition, including promoting erythropoiesis and inhibiting apoptosis in B cells.

平台

Microplate

性能

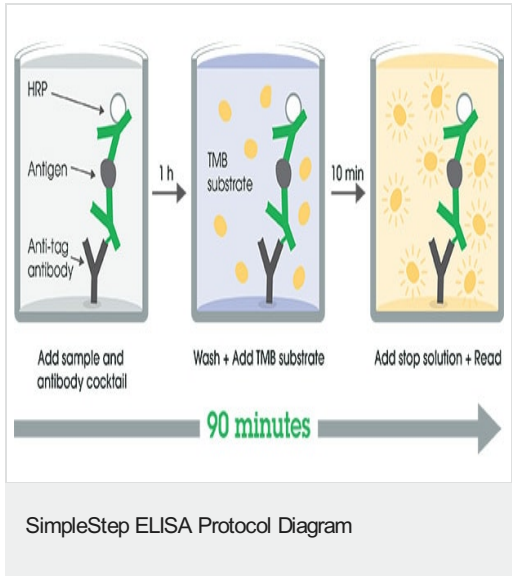
存放说明Store at +4°C. Please refer to protocols.

| 组件 | 1 x 96 tests | 10 x 96 tests | 1 x 384 tests |
|------------------------------------|--------------|---------------|---------------|
| 10X Human TIMP-1 Capture Antibody | 1 x 600µl | 1 x 6000µl | 1 x 600µl |
| 10X Human TIMP-1 Detector Antibody | 1 x 600µl | 1 x 6000µl | 1 x 600µl |
| 10X Wash Buffer PT (ab206977) | 1 x 20ml | 1 x 200ml | 1 x 20ml |
| 384 well CaptSure™ microplates | 0 x 0 unit | 0 x 0 unit | 1 unit |
| Antibody Diluent 4BI | 1 x 6ml | 10 x 6ml | 1 x 6ml |

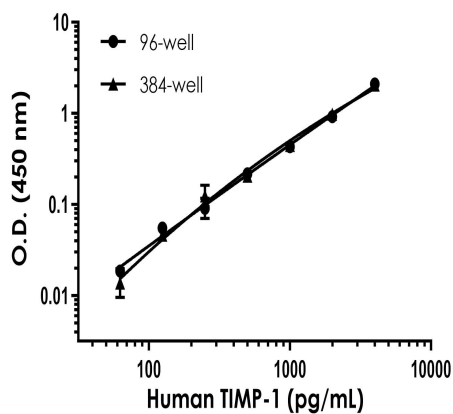
| 组件 | 1 x 96 tests | 10 x 96 tests | 1 x 384 tests |
|---|--------------|---------------|---------------|
| Human TIMP-1 Lyophilized Recombinant Protein | 2 vials | 2 x 10 vials | 2 vials |
| Plate Seals | 1 unit | 1 x 10 units | 1 unit |
| Sample Diluent NS (ab193972) | 1 x 50ml | 2 x 250ml | 2 x 50ml |
| SimpleStep Pre-Coated 96-Well Microplate (ab206978) | 1 unit | 1 x 10 units | 0 x 0 unit |
| Stop Solution | 1 x 12ml | 1 x 120ml | 2 x 12ml |
| TMB Development Solution | 1 x 12ml | 1 x 120ml | 2 x 12ml |

| | |
|-------|--|
| 功能 | Complexes with metalloproteinases (such as collagenases) and irreversibly inactivates them by binding to their catalytic zinc cofactor. Also mediates erythropoiesis in vitro; but, unlike IL-3, it is species-specific, stimulating the growth and differentiation of only human and murine erythroid progenitors. Known to act on MMP-1, MMP-2, MMP-3, MMP-7, MMP-8, MMP-9, MMP-10, MMP-11, MMP-12, MMP-13 and MMP-16. Does not act on MMP-14. |
| 序列相似性 | Belongs to the protease inhibitor I35 (TIMP) family. Contains 1 NTR domain. |
| 翻译后修饰 | The activity of TIMP1 is dependent on the presence of disulfide bonds. |
| 细胞定位 | Secreted. |

图片

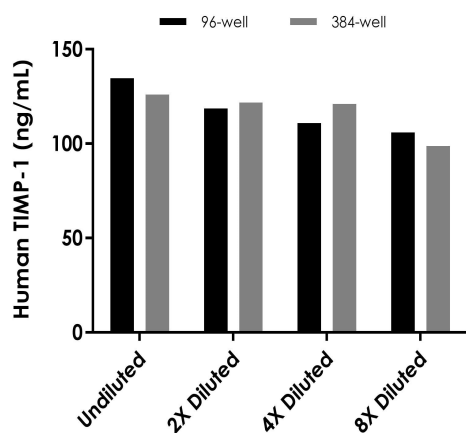


SimpleStep ELISA technology allows the formation of the antibody-antigen complex in one single step, reducing assay time to 90 minutes. Add samples or standards and antibody mix to wells all at once, incubate, wash, and add your final substrate. See protocol for a detailed step-by-step guide.



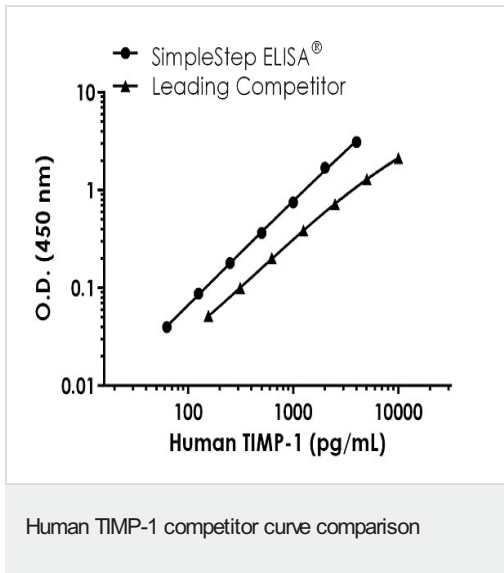
Interpolated concentrations of human TIMP-1 in serum in 96-well vs. 384-well plates.

Interpolated concentration of native TIMP-1 was measured in duplicate at different sample concentrations in 96-well vs. 384-well plates. Undiluted samples are 5% human serum. The interpolated dilution factor corrected values are plotted (mean \pm SD, $n=2$). Sample dilutions are made in Sample Diluent NS.

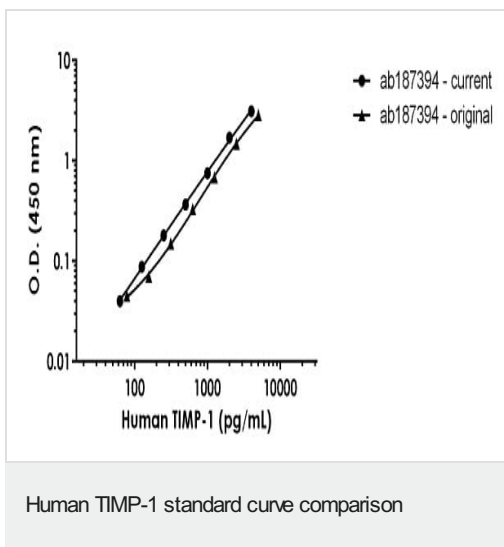


Example of human TIMP-1 standard curve in Sample Diluent NS in 96-well vs. 384-well plate.

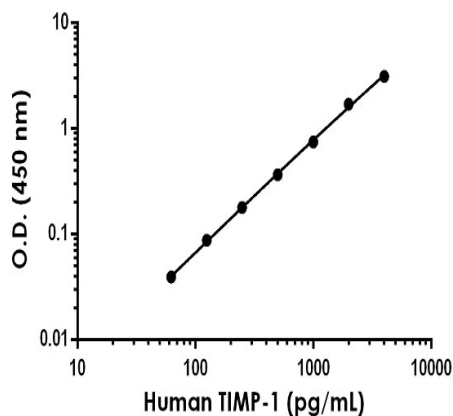
Example of human TIMP-1 standard curve in 96-well vs. 384-well plate. Background-subtracted data values (mean \pm SD) are graphed.



Standard Curve comparison between Human TIMP-1 SimpleStep ELISA kit and traditional ELISA kit from leading competitor. SimpleStep ELISA kit shows increased sensitivity.

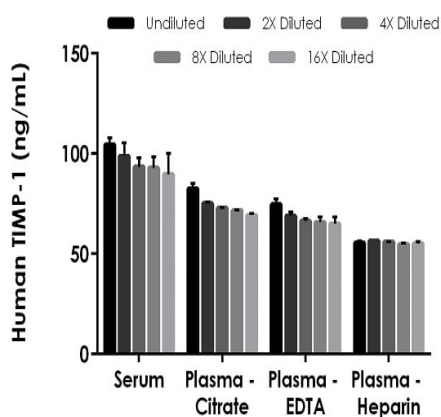


Standard Curve comparison between the original Human TIMP-1 SimpleStep ELISA kit and current Human TIMP-1 SimpleStep ELISA kit.



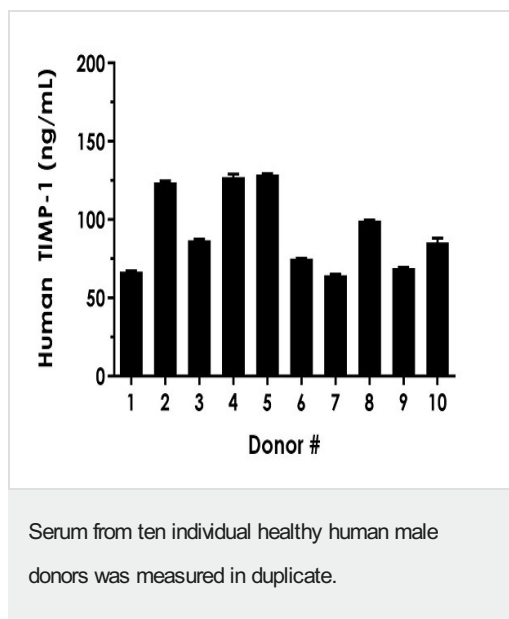
Example of human TIMP-1 standard curve in Sample Diluent NS.

The TIMP-1 standard curve was prepared as described in Section 10. Raw data values are shown in the table. Background-subtracted data values (mean \pm SD) are graphed.

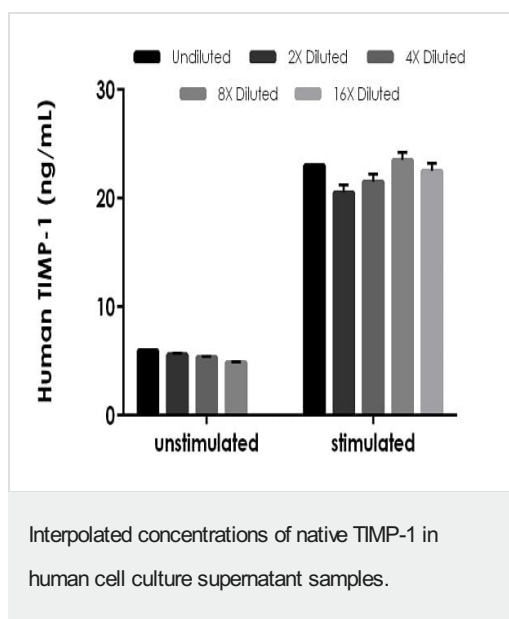


Interpolated concentrations of native TIMP-1 in human serum, and plasma samples.

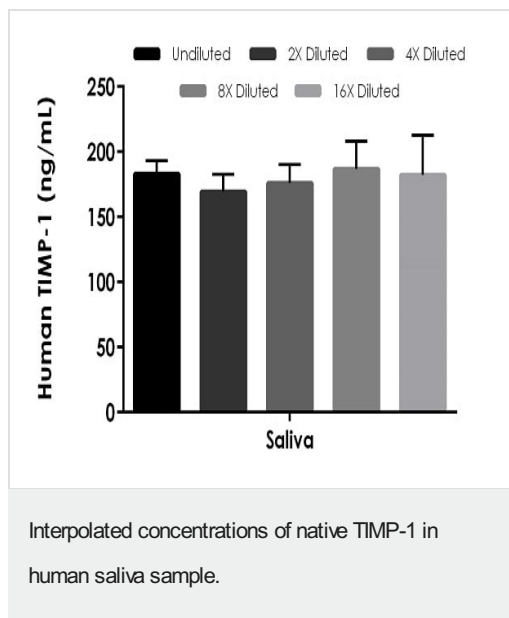
The concentrations of TIMP-1 were measured in duplicates, interpolated from the TIMP-1 standard curves and corrected for sample dilution. Undiluted samples are as follows: serum 5%, plasma (citrate) 5%, plasma (EDTA) 5% and plasma (heparin) 10%. The interpolated dilution factor corrected values are plotted (mean \pm SD, $n=2$). The mean TIMP-1 concentration was determined to be 95.9 ng/mL in serum, 74 ng/mL in plasma (citrate), 68 ng/mL in plasma (EDTA) and 56 ng/mL in plasma (heparin).



Interpolated dilution factor corrected values are plotted (mean \pm SD, $n=2$). The mean TIMP-1 concentration was determined to be 92.6 ng/mL with a range of 66.5 – 128.7 ng/mL.



The concentrations of TIMP-1 were measured in duplicates, interpolated from the TIMP-1 standard curves and corrected for sample dilution. Undiluted samples are as follows: unstimulated PBMC cell culture supernatant 20% and stimulated PBMC cell culture supernatant. The interpolated dilution factor corrected values are plotted (mean \pm SD, $n=2$). The mean TIMP-1 concentration was determined to be 5 ng/mL in unstimulated and 22 ng/mL in stimulated and undetectable in media.



The concentrations of TIMP-1 were measured in duplicates, interpolated from the TIMP-1 standard curves and corrected for sample dilution. Undiluted samples are as follows: saliva 2%, The interpolated dilution factor corrected values are plotted (mean \pm SD, $n=2$). The mean TIMP-1 concentration was determined to be 179.4 ng/mL in saliva.

Powered by
recombinant antibodies

Research with confidence
Consistent and reproducible results

Long-term and scalable supply
Recombinant technology

Success from the first experiment
Confirmed specificity

Ethical standards compliant
Animal-free production

Sandwich ELISA - Human TIMP1 ELISA Kit
(ab187394)

To learn more about the advantages of recombinant antibodies see [here](#).

Please note: All products are "FOR RESEARCH USE ONLY. NOT FOR USE IN DIAGNOSTIC PROCEDURES"

Our Abpromise to you: Quality guaranteed and expert technical support

- Replacement or refund for products not performing as stated on the datasheet

- Valid for 12 months from date of delivery
- Response to your inquiry within 24 hours
- We provide support in Chinese, English, French, German, Japanese and Spanish
- Extensive multi-media technical resources to help you
- We investigate all quality concerns to ensure our products perform to the highest standards

If the product does not perform as described on this datasheet, we will offer a refund or replacement. For full details of the Abpromise, please visit <https://www.abcam.cn/abpromise> or contact our technical team.

Terms and conditions

- Guarantee only valid for products bought direct from Abcam or one of our authorized distributors