

Human PGC ELISA Kit ab275552

重组 SimpleStep ELISA

[1 References](#) [5 图像](#)

概述

产品名称 人PGC ELISA试剂盒

检测方法 Colorimetric

精确度 批次内

样品	n	Mean	SD	CV%
Serum	8			2.8%

批次间

样品	n	Mean	SD	CV%
Serum	3			8.1%

样品类型 Serum, Hep Plasma, EDTA Plasma, Cit plasma

检测类型 Sandwich (quantitative)

灵敏度 16.5 pg/ml

范围 54.69 pg/ml - 3500 pg/ml

回收率 特定样本回收率

样品类型	平均%	范围
Serum	104	99% - 108%
Hep Plasma	95	93% - 98%
EDTA Plasma	101	93% - 107%
Cit plasma	90	88% - 94%

检测时间 1h 30m

实验步骤 One step assay

种属反应性 与反应: Human

产品概述

Human PGC ELISA kit (ab275552) is a single-wash 90 min sandwich ELISA designed for the quantitative measurement of Human PGC protein in human serum and plasma. It uses our proprietary SimpleStep ELISA® technology. Quantitate Human PGC with 16.5 pg/mL sensitivity.

SimpleStep ELISA® technology employs capture antibodies conjugated to an affinity tag that is recognized by the monoclonal antibody used to coat our SimpleStep ELISA® plates. This approach to sandwich ELISA allows the formation of the antibody-analyte sandwich complex in a single step, significantly reducing assay time. See the SimpleStep ELISA® protocol summary in the image section for further details. Our SimpleStep ELISA® technology provides several benefits:

- Single-wash protocol reduces assay time to 90 minutes or less
- High sensitivity, specificity and reproducibility from superior antibodies
- Fully validated in biological samples
- 96-wells plate breakable into 12 x 8 wells strips

A 384-well SimpleStep ELISA® microplate ([ab203359](#)) is available to use as an alternative to the 96-well microplate provided with SimpleStep ELISA® kits.

说明

Pepsinogen C (PGC, progastricsin) is an aspartic proteinase zymogen that belongs to the peptidase family A1. Pepsin C, the activated protease, is a digestive enzyme that is produced in the stomach and constitutes a major component of the gastric mucosa. Pepsinogen C protein is synthesized as an inactive zymogen that autocatalyzes by sequential cleavage of the prosegment into its active mature form at low pH. Pepsinogen C polymorphisms are associated with susceptibility to gastric cancers. Serum levels of this enzyme are used as a biomarker for certain gastric diseases including Helicobacter pylori related gastritis.

平台

Pre-coated microplate (12 x 8 well strips)

性能

存放说明

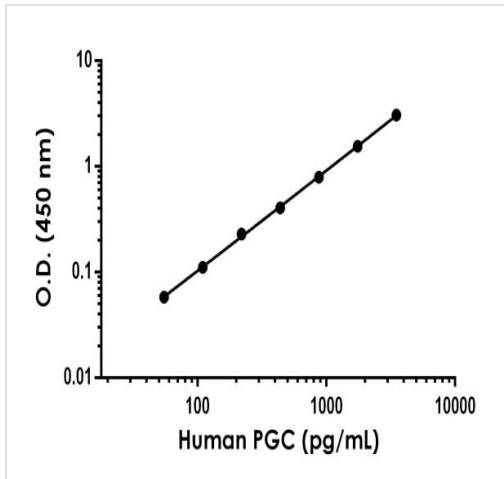
Store at +4°C. Please refer to protocols.

组件	1 x 96 tests
10X Human PGC (Pepsinogen C) Capture Antibody	1 x 600µl
10X Human PGC (Pepsinogen C) Detector Antibody	1 x 600µl
10X Wash Buffer PT (ab206977)	1 x 20ml
Antibody Diluent 4BI	1 x 6ml
Human PGC (Pepsinogen C) Lyophilized Recombinant Protein	2 vials
Plate Seals	1 unit

组件	1 x 96 tests
Sample Diluent NS (ab193972)	1 x 50ml
SimpleStep Pre-Coated 96-Well Microplate (ab206978)	1 unit
Stop Solution	1 x 12ml
TMB Development Solution	1 x 12ml

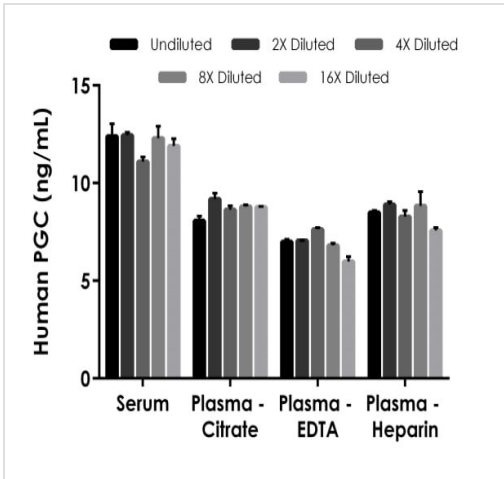
功能	Hydrolyzes a variety of proteins.
序列相似性	Belongs to the peptidase A1 family. Contains 1 peptidase A1 domain.
细胞定位	Secreted.

图片



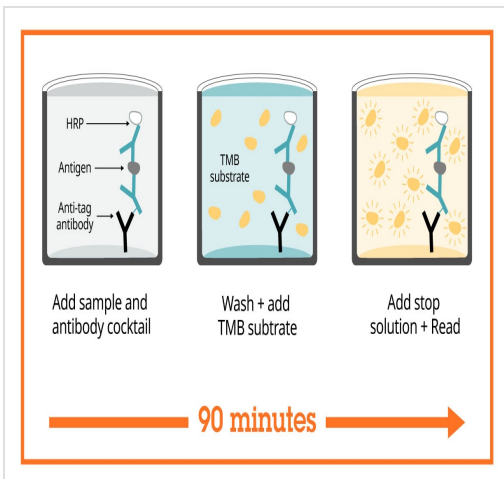
The PGC standard curve was prepared as described in Section 10. Raw data values are shown in the table. Background-subtracted data values (mean +/- SD) are graphed.

Example of human PGC standard curve in Sample Diluent NS.



Interpolated concentrations of native PGC in human serum and plasma samples.

The concentrations of PGC were measured in duplicates, interpolated from the PGC standard curves and corrected for sample dilution. Undiluted samples are as follows: serum 25%, plasma (citrate) 25%, plasma (EDTA) 50%, and plasma (heparin) 25%. The interpolated dilution factor corrected values are plotted (mean \pm SD, n=2). The mean PGC concentration was determined to be 12.02 ng/mL in serum, 8.96 ng/mL in plasma (citrate), 6.89 ng/mL in and plasma (EDTA), and 8.41 ng/mL in plasma (heparin).



SimpleStep ELISA technology allows the formation of the antibody-antigen complex in one single step, reducing assay time to 90 minutes. Add samples or standards and antibody mix to wells all at once, incubate, wash, and add your final substrate. See protocol for a detailed step-by-step guide.

Sandwich ELISA - Human PGC ELISA Kit (ab275552)

Powered by recombinant antibodies

- Research with confidence:** Consistent and reproducible results
- Long-term and scalable supply:** Recombinant technology
- Success from the first experiment:** Confirmed specificity
- Ethical standards compliant:** Animal-free production

To learn more about the advantages of recombinant antibodies see [here](#).

Sandwich ELISA - Human PGC ELISA Kit (ab275552)

Get more done with SimpleStep ELISA



Easy to use
Single-wash 90-minute protocol



Flexible
Matched antibody pairs available



Precision antibodies
High sensitivity, specificity and reproducibility



Scalable
Now in 10-pack and 384-well formats

Sandwich ELISA - Human PGC ELISA Kit
(ab275552)

To learn more about the advantages of SimpleStep ELISA® kits see [here](#).

Please note: All products are "FOR RESEARCH USE ONLY. NOT FOR USE IN DIAGNOSTIC PROCEDURES"

Our Abpromise to you: Quality guaranteed and expert technical support

- Replacement or refund for products not performing as stated on the datasheet
- Valid for 12 months from date of delivery
- Response to your inquiry within 24 hours
- We provide support in Chinese, English, French, German, Japanese and Spanish
- Extensive multi-media technical resources to help you
- We investigate all quality concerns to ensure our products perform to the highest standards

If the product does not perform as described on this datasheet, we will offer a refund or replacement. For full details of the Abpromise, please visit <https://www.abcam.cn/abpromise> or contact our technical team.

Terms and conditions

- Guarantee only valid for products bought direct from Abcam or one of our authorized distributors