

Human PD-1 ELISA Kit ab252360

重组 SimpleStep ELISA

3 References 7 图像

概述

产品名称	人PD-1 ELISA试剂盒				
检测方法	Colorimetric				
精确度	批次内				
	样品	n	Mean	SD	CV%
	Serum	8			2.4%
	批次间				
	样品	n	Mean	SD	CV%
	Serum	3			9.6%
样品类型	Cell culture supernatant, Serum, Tissue Extracts, Cell culture media, Hep Plasma, EDTA Plasma, Cit plasma				
检测类型	Sandwich (quantitative)				
灵敏度	9.6 pg/ml				
范围	25 pg/ml - 1600 pg/ml				
回收率	特定样本回收率				

样品类型	平均%	范围
Serum	93	90% - 96%
Tissue Extracts	102	101% - 104%
Cell Lysate	98	95% - 100%
Cell culture media	95	93% - 97%
Hep Plasma	92	90% - 94%
EDTA Plasma	95	93% - 97%

样品类型	平均%	范围
Cit plasma	94	93% - 96%

#### 检测时间

1h 30m

#### 实验步骤

One step assay

#### 种属反应性

**与反应:** Human

**不与反应:** Cow

#### 产品概述

Human PD-1 ELISA Kit (ab252360) is a single-wash 90 min sandwich ELISA designed for the quantitative measurement of PD-1 protein in cell culture media, cell culture supernatant, cit plasma, edta plasma, hep plasma, serum, and tissue extracts. It uses our proprietary SimpleStep ELISA® technology. Quantitate Human PD-1 with 9.6 pg/ml sensitivity.

SimpleStep ELISA® technology employs capture antibodies conjugated to an affinity tag that is recognized by the monoclonal antibody used to coat our SimpleStep ELISA® plates. This approach to sandwich ELISA allows the formation of the antibody-analyte sandwich complex in a single step, significantly reducing assay time. See the SimpleStep ELISA® protocol summary in the image section for further details. Our SimpleStep ELISA® technology provides several benefits:

- Single-wash protocol reduces assay time to 90 minutes or less
- High sensitivity, specificity and reproducibility from superior antibodies
- Fully validated in biological samples
- 96-wells plate breakable into 12 x 8 wells strips

A 384-well SimpleStep ELISA® microplate ([ab203359](#)) is available to use as an alternative to the 96-well microplate provided with SimpleStep ELISA® kits.

#### 说明

Abcam has not and does not intend to apply for the REACH Authorisation of customers' uses of products that contain European Authorisation list (Annex XIV) substances.

It is the responsibility of our customers to check the necessity of application of REACH Authorisation, and any other relevant authorisations, for their intended uses.

#### 平台

Pre-coated microplate (12 x 8 well strips)

#### 性能

#### 存放说明

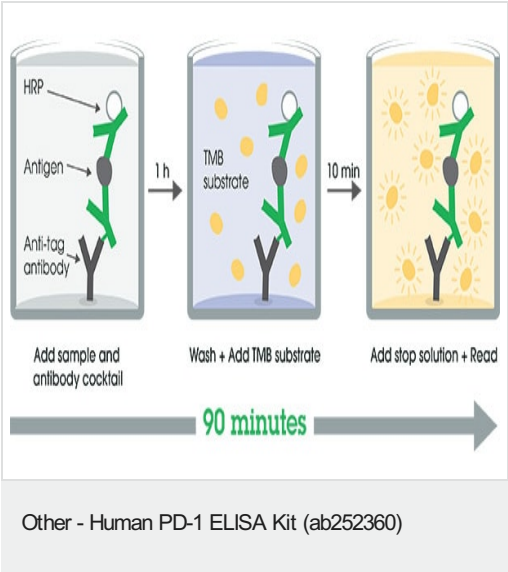
Store at +4°C. Please refer to protocols.

组件	1 x 96 tests	1 x 96 tests
10X Human PD-1 Capture Antibody	1 x 600µl	1 x 600µl
10X Human PD-1 Detector Antibody	1 x 600µl	1 x 600µl
10X Wash Buffer PT (ab206977)	1 x 20ml	1 x 20ml
50X Cell Extraction Enhancer Solution (ab193971)	1 x 1ml	1 x 1ml

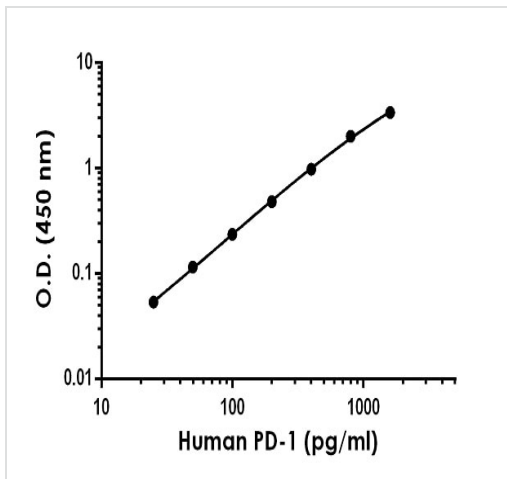
组件	1 x 96 tests	1 x 96 tests
5X Cell Extraction Buffer PTR (ab193970)	1 x 10ml	1 x 10ml
Antibody Diluent CPI2	1 x 6ml	1 x 6ml
Human PD-1 Lyophilized Recombinant Protein	2 vials	2 vials
Plate Seals	1 unit	1 unit
Sample Diluent NS (ab193972)	1 x 50ml	1 x 50ml
SimpleStep Pre-Coated 96-Well Microplate (ab206978)	1 unit	1 unit
Stop Solution	1 x 12ml	1 x 12ml
TMB Development Solution	1 x 12ml	1 x 12ml

功能	Possible cell death inducer, in association with other factors.
疾病相关	Genetic variation in PDCD1 is associated with susceptibility to systemic lupus erythematosus type 2 (SLEB2) [MIM:605218]. Systemic lupus erythematosus is a chronic, inflammatory and often febrile multisystemic disorder of connective tissue. It affects principally the skin, joints, kidneys and serosal membranes. It is thought to represent a failure of the regulatory mechanisms of the autoimmune system.
序列相似性	Contains 1 Ig-like V-type (immunoglobulin-like) domain.
发展阶段	Induced at programmed cell death.
细胞定位	Membrane.

图片

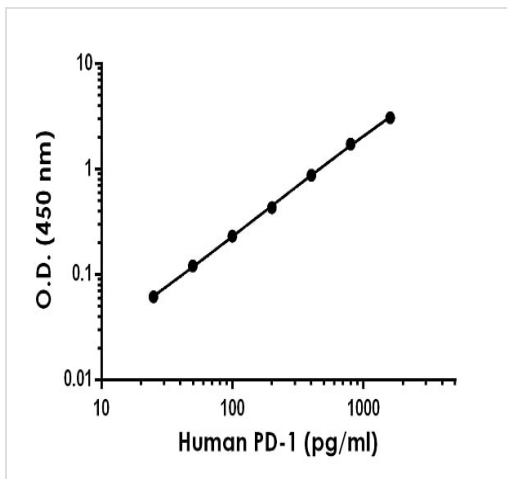


SimpleStep ELISA technology allows the formation of the antibody-antigen complex in one single step, reducing assay time to 90 minutes. Add samples or standards and antibody mix to wells all at once, incubate, wash, and add your final substrate. See protocol for a detailed step-by-step guide.



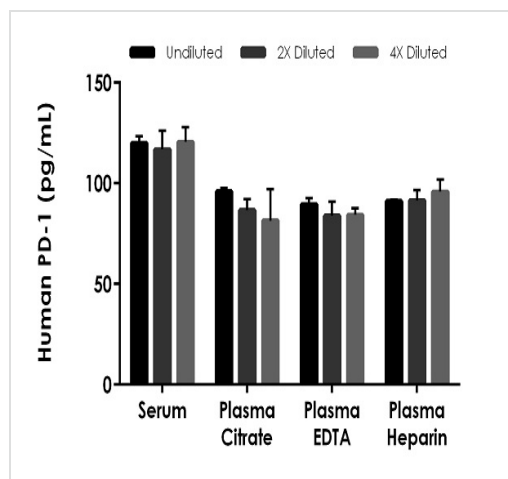
Example of human PD-1 standard curve in Sample Diluent NS.

The PD-1 standard curve was prepared as described in Section 10. Raw data values are shown in the table. Background-subtracted data values (mean +/- SD) are graphed.



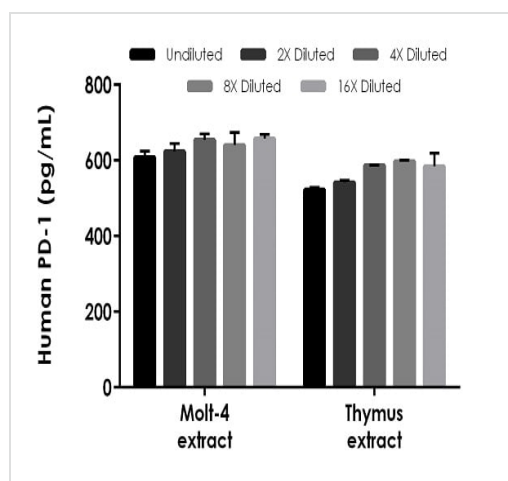
Example of human PD-1 standard curve in 1X Cell Extraction Buffer PTR.

The PD-1 standard curve was prepared as described in Section 10. Raw data values are shown in the table. Background-subtracted data values (mean +/- SD) are graphed.



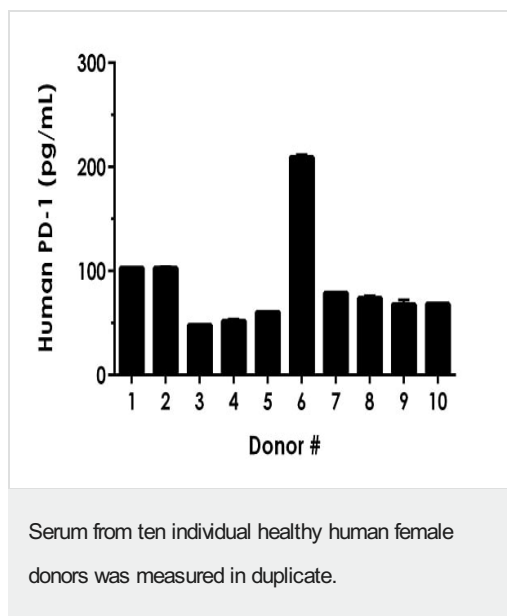
Interpolated concentrations of native PD-1 in human serum, plasma samples.

The concentrations of PD-1 were measured in duplicates, interpolated from the PD-1 standard curves and corrected for sample dilution. Undiluted samples are as follows: serum neat, plasma (citrate) neat, plasma (EDTA) neat, plasma (heparin) neat. The interpolated dilution factor corrected values are plotted (mean  $\pm$  SD,  $n=2$ ). The mean PD-1 concentration was determined to be 119.1 pg/mL in serum, 88.1 pg/mL in plasma (citrate) and 85.9 pg/mL in plasma (EDTA), and 92.8 pg/mL in plasma (heparin).



Interpolated concentrations of native PD-1 in human Molt-4 cell extract based on a 1000  $\mu$ g/mL extract load and Thymus tissue extract samples based on a 500  $\mu$ g/mL extract load.

The concentrations of PD-1 were measured in duplicate and interpolated from the PD-1 standard curve and corrected for sample dilution. The interpolated dilution factor corrected values are plotted (mean  $\pm$  SD,  $n=2$ ). The mean PD-1 concentration was determined to be 636.9 pg/mL in Molt-4 cell extract and 566.5 pg/mL in Thymus tissue extract.



Interpolated dilution factor corrected values are plotted (mean  $\pm$  SD, n=2). The mean PD-1 concentration was determined to be 86.56 pg/mL with a range of 47.82 – 210.99 pg/mL.

Powered by  
recombinant antibodies

**Research with confidence**  
Consistent and reproducible results

**Long-term and scalable supply**  
Recombinant technology

**Success from the first experiment**  
Confirmed specificity

**Ethical standards compliant**  
Animal-free production

Sandwich ELISA - Human PD-1 ELISA Kit  
(ab252360)

To learn more about the advantages of recombinant antibodies see [here](#).

**Please note:** All products are "FOR RESEARCH USE ONLY. NOT FOR USE IN DIAGNOSTIC PROCEDURES"

### Our Abpromise to you: Quality guaranteed and expert technical support

- Replacement or refund for products not performing as stated on the datasheet
- Valid for 12 months from date of delivery
- Response to your inquiry within 24 hours
- We provide support in Chinese, English, French, German, Japanese and Spanish
- Extensive multi-media technical resources to help you
- We investigate all quality concerns to ensure our products perform to the highest standards

If the product does not perform as described on this datasheet, we will offer a refund or replacement. For full details of the Abpromise, please visit <https://www.abcam.cn/abpromise> or contact our technical team.

## Terms and conditions

---

- Guarantee only valid for products bought direct from Abcam or one of our authorized distributors